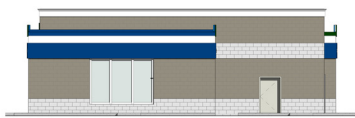


# Car Wash Systems Inc Columbia Avenue

**RLS Construction Group** was chosen to construct a new car wash facility, on Columbia Avenue, in East Hempfield Township, Lancaster, PA. The project work will include land development plans, grading, cut/fill, stormwater, curbs, sidewalks, paving and line striping. Additionally, the facility will consist of two (2) pre-manufactured automatic bays, erected on the site, and associated equipment rooms with 8" block walls, featuring core insulation, a metal joist roof and an insulated membrane roof over metal roof decking.



Location:  
**Lancaster, PA**

Client:  
**Car Wash Systems Inc**

Cost:  
**\$300,000**

Completion Date:  
**on-going**

**RLS**

CONSTRUCTION GROUP



- General Construction
- Design/Build
- Construction Management
- Building Maintenance

**Relationships  
Loyalty &  
Solutions**

A Service-Disabled Veteran-  
Owned Small Business



www.RLSCG.com  
717.502.6680