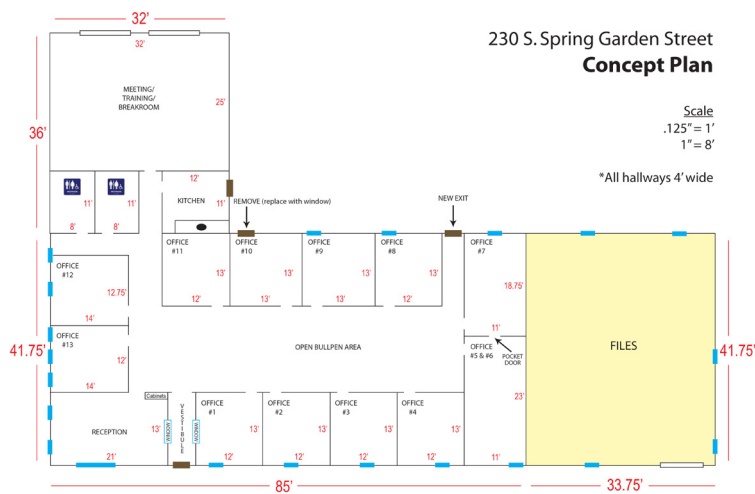


# Child Care Network

**RLS Construction Group** was contracted by 230 Spring Garden Partners to complete demolition of an existing structure, followed by the design/build of new office space for Child Care Network. Faced with unanticipated hazardous material in the concrete flooring slab, **RLS** developed an unconventional, yet effective abatement solution; cleaning the floor with biodegradable materials and then sealing the area to prevent any moisture penetration. The technique, specifically developed for the problem, resolved the issue with better than anticipated results. The newly developed space accommodates individual offices, open workspaces, a meeting/training room and file/storage areas for the corporate office staff.



Location:  
**Carlisle, PA**

Client:  
**230 Spring Garden Partners**

Square Footage:  
**6,100**

Cost:  
**\$311,367**

Completion Date:  
**January 2012**

**RLS**

CONSTRUCTION GROUP



- General Construction
- Design/Build
- Construction Management
- Building Maintenance

**Relationships  
Loyalty &  
Solutions**

A Service-Disabled Veteran-  
Owned Small Business



www.RLSCG.com  
717.502.6680