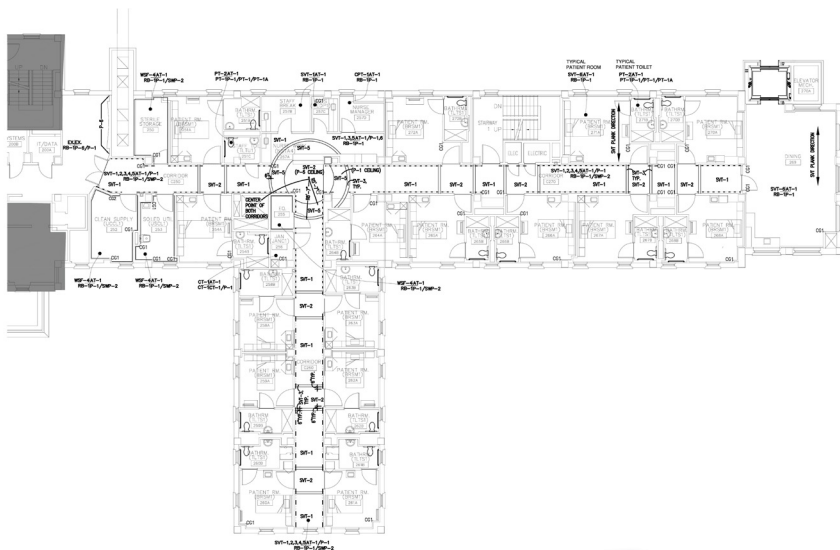


Lebanon VA Medical Center Acute Care Unit

RLS Construction Group was contracted by the Department of Veterans Affairs to renovate an area at the Lebanon VA Medical Center to create a 1 - 2 bed acute care unit. The new space was formerly the Surgical Suite, which was relocated in October 2014, and will accommodate an efficient, post-surgical, in-patient nursing unit, which will operate 24-hours a day, 7-days a week. The work will include demolition, general construction, and alterations, as well as new mechanical, electrical and other necessary system updates to provide a state-of-the-art unit, where patients receive the best possible care, in a comforting and healing environment.



Location:
Lebanon, PA

Client:
**Department of
Veterans Affairs**

Cost:
\$6,742,000

Completion Date:
on-going

RLS

CONSTRUCTION GROUP



- General Construction
- Design/Build
- Construction Management
- Building Maintenance

**Relationships
Loyalty &
Solutions**

A Service-Disabled Veteran-
Owned Small Business



www.RLSCG.com
717.502.6680