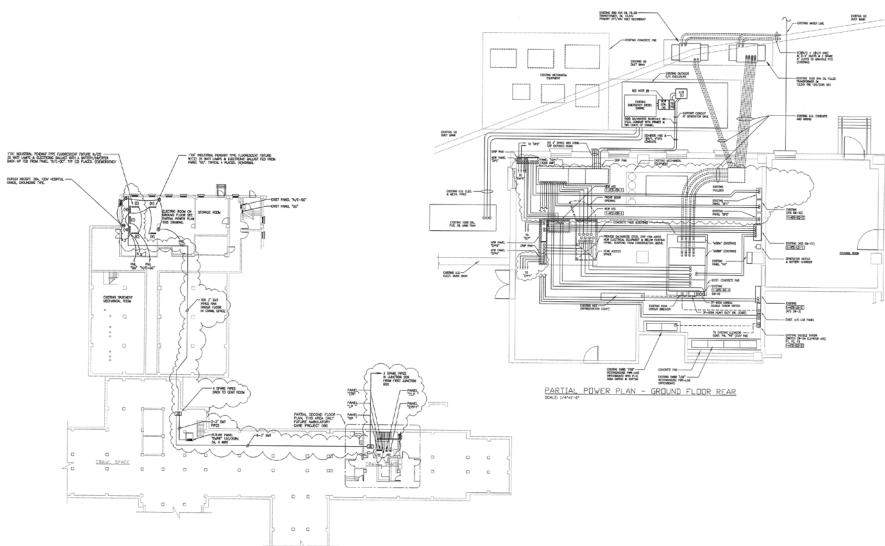


# Lebanon VA Medical Center Replace Automatic Transfer Switches

**RLS Construction Group** was contracted by the Department of Veterans Affairs to provide all the resources necessary for the replacement of three (3) automatic transfer switches in Building #1 at the Lebanon VA Medical Center, located in Lebanon, PA. The details of the task involve coordination of power shutdown, including connection of temporary cabling to the generator in Building #1; installation of all associated equipment and controls; and coordination of power start-up, as well as shut-down of the generator and removal of the temporary cabling. Additionally, RLS was required to provide a back-up generator and associated cabling, capable of supporting the hospital operations, in the event that the Building #1 generator would fail or be unavailable. Because of the important function of Building #1, it is paramount that electrical power is not disrupted throughout the duration of the project.



Location:  
**Lebanon, PA**

Client:  
**Department of  
Veterans Affairs**

Cost:  
**\$221,220**

Completion Date:  
**on-going**

**RLS**

CONSTRUCTION GROUP



- General Construction
- Design/Build
- Construction Management
- Building Maintenance

**Relationships  
Loyalty &  
Solutions**

A Service-Disabled Veteran-  
Owned Small Business



www.RLSCG.com  
717.502.6680