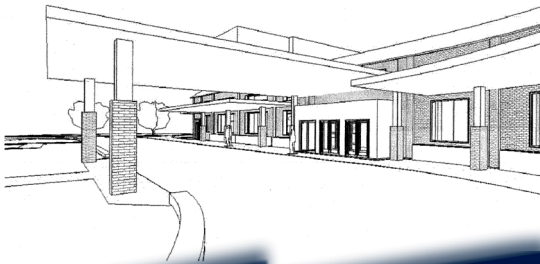
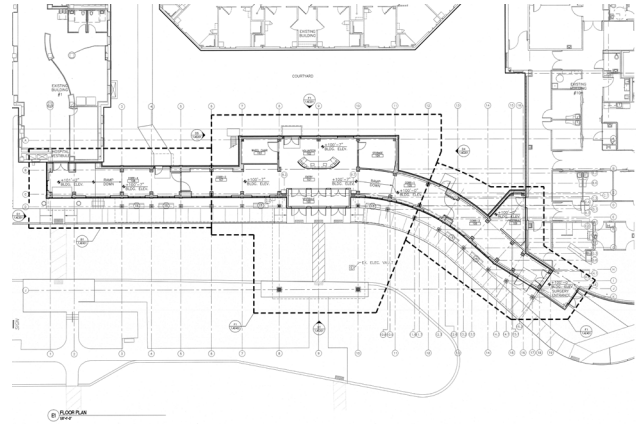


# Lebanon VA Medical Center New Front Entrance

**RLS Construction Group** was selected by the Department of Veterans Affairs to construct a new entrance at the Lebanon VA Medical Center campus. The new structure will connect Building #1 and #104, and will become the hospital's main entrance. Enhancements will include an exterior vehicular canopy, with smaller pedestrian canopies for the comfort of the medical center's patients and visitors. The new entrance will tie the two separate buildings together, utilizing materials that compliment the existing structures. Additional work will include replacement of an air handler, as well as upgrades to the mechanical systems. The finished entrance will provide a modern aesthetic, to reflect the level of treatments and care available at this trusted medical facility.



Location:  
**Lebanon, PA**

Client:  
**Department of  
Veterans Affairs**

Square Footage:  
**3,000**

Cost:  
**\$2,150,000**

Completion Date:  
**on-going**

**RLS**

CONSTRUCTION GROUP



- General Construction
- Design/Build
- Construction Management
- Building Maintenance

**Relationships  
Loyalty &  
Solutions**

A Service-Disabled Veteran-  
Owned Small Business



www.RLSCG.com  
717.502.6680