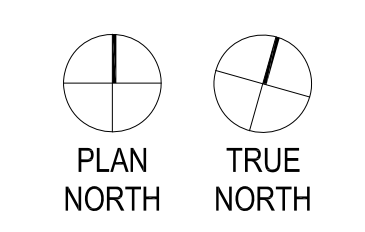



- PLAN NOTES:
1. SEE ARCHITECTURAL DRAWINGS FOR EXISTING BUILDING DIMENSIONS AND ELEVATIONS NOT SHOWN.
 2. SEE DETAIL 2/SS01 FOR TYPICAL WOOD FRAMED SHEAR WALL FRAMING.
 3. DO NOT PROCEED WITH CORRECTIVE OR RENOVATION WORK ABOVE UNTIL WOOD FRAMED SHEAR WALLS HAVE BEEN CONSTRUCTED.
 4. COORDINATE WALL LOCATIONS WITH CHANNELS SUPPORTING STORAGE TANK ABOVE. BUILD STUD WALL AROUND EXISTING TIMBER BEAM ABOVE AS NECESSARY.
 5. B.O. FOOTING ELEVATION TO MATCH EXISTING ADJACENT BUILDING FOOTING ELEVATION.
 6. ALL NEW WOOD TO BE FIRE-RATED. Δ

FOUNDATION PLAN
SCALE $\frac{1}{4}'' = 1'-0''$



Revisions:	Date
Revisions by the VA	09/19/2019
100% Construction Documents Submission	05/31/13
95% Construction Documents Submission	05/10/13
60% Design Development Submission	03/28/13

ARCHITECT / ENGINEERS:



2 Wisconsin Circle; Suite 820
Chevy Chase, MD 20815-7003
301.718.0080
www.okksstudios.com

HENRY ADAMS
Consulting Engineers

Henry Adams, LLC
Consulting Engineers
600 Baltimore Avenue
Baltimore, MD 21204
Tel: (410)296-6500
Fax: (410)296-3156

Mechanical Electrical & Plumbing Engineers

Woods Peacock Engineering Consultants
5250 Cherokee Avenue, Suite 420
Alexandria, VA 22312-2052
Tel: (703) 658-4400
Fax: (703) 658-4404

Stamp/Seal

Drawing Title
FOUNDATION PLAN

Approved: Project Director

Project Title
BUILDING 405B RENOVATIONS

Location
MARTINSBURG, WV

Date
05/31/2013

Checked
TMP


Drawn
CAD

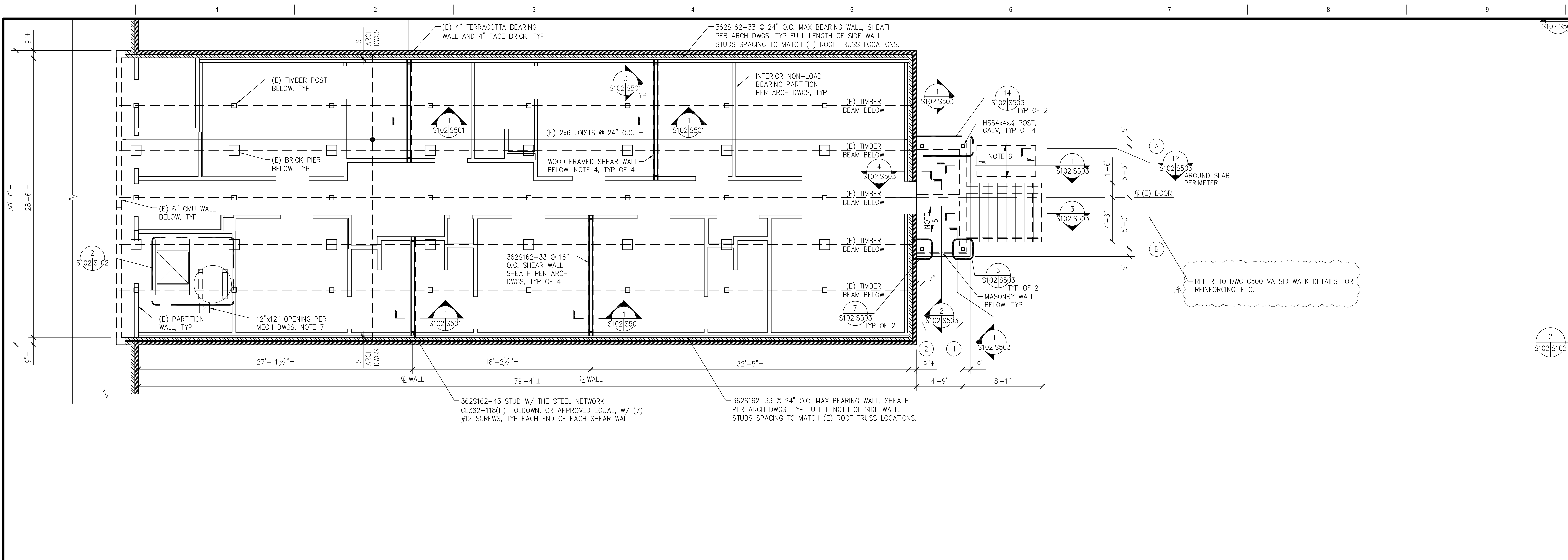
VA Project Number
613-13-115

Building Number
405B

Drawing Number
S101

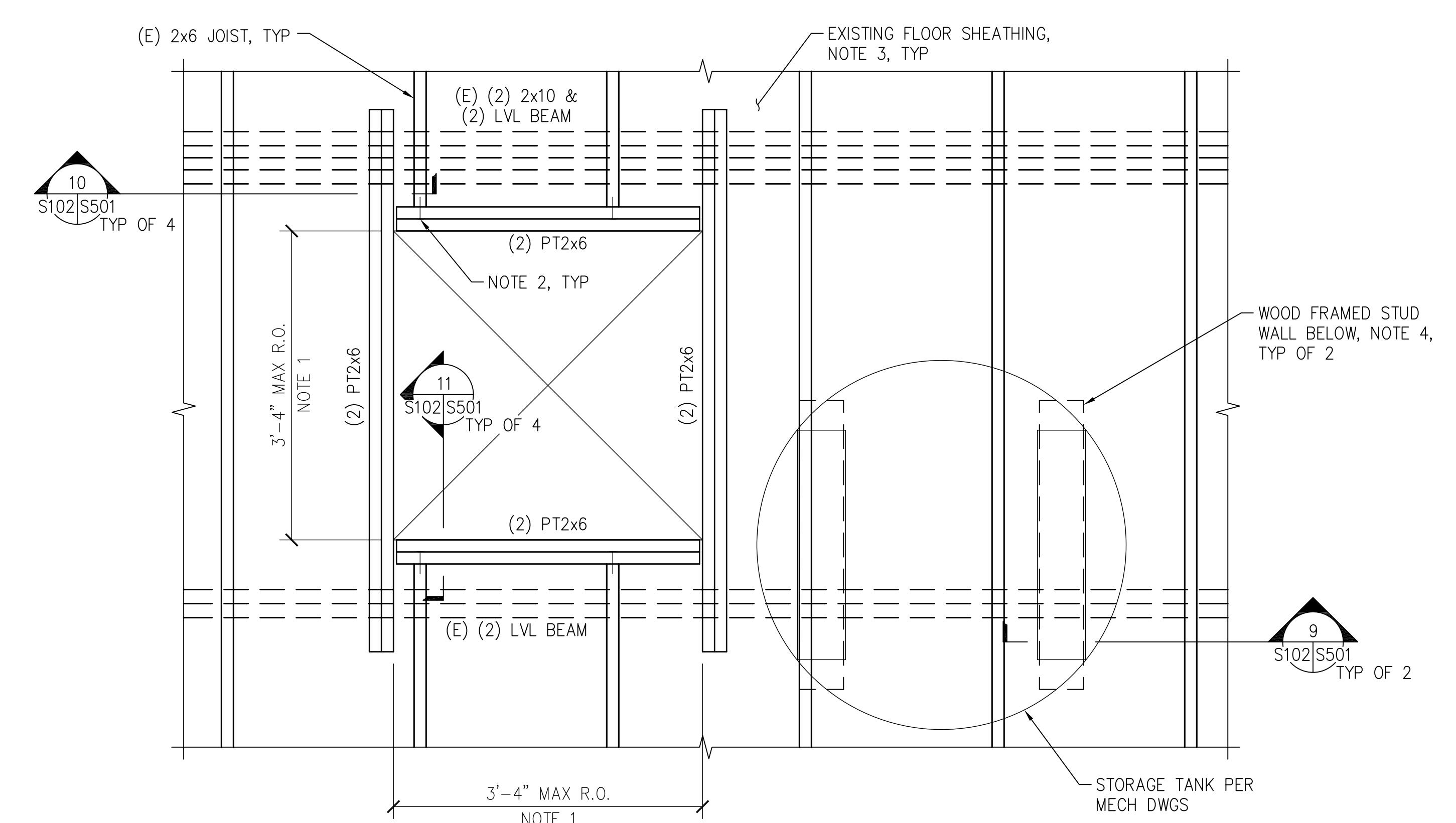
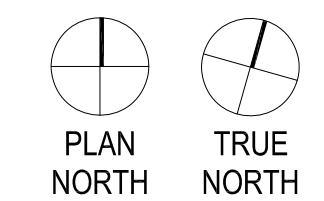
Office of Construction and Facilities Management





- PLAN NOTES:
1. SEE ARCHITECTURAL DRAWINGS FOR EXISTING BUILDING DIMENSIONS AND ELEVATIONS NOT SHOWN.
 2. SEE ARCHITECTURAL DRAWINGS FOR LOCATIONS AND CONSTRUCTION OF INTERIOR NON-LOAD BEARING PARTITION WALLS.
 3. SEE DETAIL 3/SS01 FOR TYPICAL COLD FORMED METAL SHEAR WALL FRAMING.
 4. DO NOT PROCEED WITH CORRECTIVE OR RENOVATION WORK ON THIS LEVEL UNTIL WOOD FRAMED SHEAR WALLS BELOW HAVE BEEN CONSTRUCTED.
 5. 5" THICK CONCRETE SLAB REINFORCED WITH #4 @ 12" O.C. EACH WAY, CENTERED IN SLAB. SEE ARCHITECTURAL DRAWINGS FOR T.O. SLAB ELEVATION.
 6. 6" THICK CONCRETE SLAB-ON-GRADE REINFORCED WITH #4 @ 12" O.C. EACH WAY. SEE ARCHITECTURAL DRAWINGS FOR T.O. SLAB ELEVATION.
 7. COORDINATE OPENING LOCATION WITH EXISTING FLOOR JOISTS. DO NOT CUT EXISTING FLOOR JOISTS.

FIRST FLOOR FRAMING PLAN
 SCALE 1/4" = 1'-0"

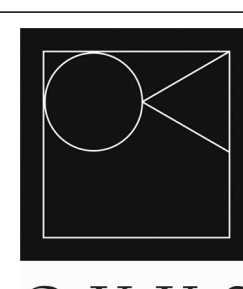


- NOTES:
1. COORDINATE OPENING SIZE AND LOCATION WITH ARCHITECTURAL DRAWINGS.
 2. ATTACH CUT ENDS OF EXISTING FLOOR JOISTS TO PT BEAMS WITH (3) 16d NAILS.
 3. REMOVE AND REPLACE EXISTING FLOOR SHEATHING TO THE EXTENT NECESSARY TO ALLOW FOR INSTALLATION OF FLOOR OPENING FRAMING.
 4. COORDINATE WALL LOCATIONS BELOW WITH CHANNELS SUPPORTING STORAGE TANK. BUILD STUD WALL AROUND EXISTING TIMBER BEAM AS NECESSARY.

MECHANICAL ROOM PARTIAL FRAMING PLAN
 SCALE 1" = 1'-0"

Revisions by the VA	Date
100% Construction Documents Submission	05/31/13
95% Construction Documents Submission	05/10/13
60% Design Development Submission	03/28/13
Revisions:	Date

ARCHITECT / ENGINEERS:



OKKS STUDIOS
 2 Wisconsin Circle; Suite 820
 Chevy Chase, MD 20815-7003
 301.718.0080
 www.oksstudios.com

HENRY ADAMS
 Consulting Engineers

Henry Adams, LLC
 Consulting Engineers
 600 Baltimore Avenue
 Baltimore, MD 21204
 Tel: (410)296-6500
 Fax: (410)296-3156

Mechanical Electrical & Plumbing Engineers

Woods Peacock Engineering Consultants
 5250 Cherokee Avenue, Suite 420
 Alexandria, VA 22312-2052
 Tel: (703) 658-4400
 Fax: (703) 658-4404

Stamp/Seal

Drawing Title
FIRST FLOOR FRAMING PLAN

Approved: Project Director

Project Title
BUILDING 405B RENOVATIONS

Location
MARTINSBURG, WV

Date
 05/31/2013

Checked
 TMP


Drawn
 CAD

VA Project Number
613-13-115

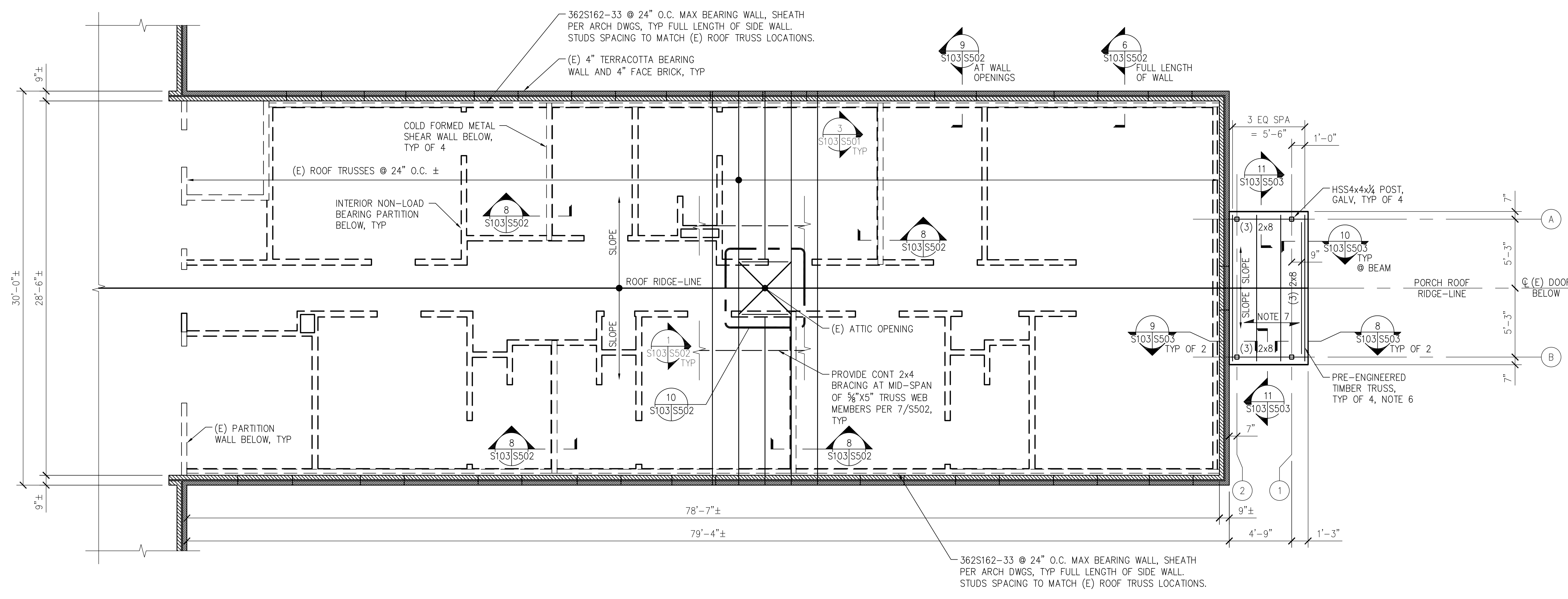
Building Number
405B

Drawing Number
S102

Office of Construction and Facilities Management

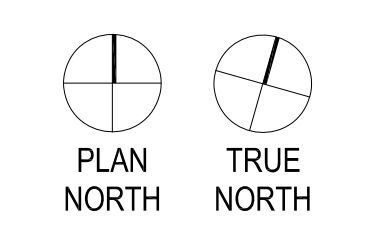


Department of Veterans Affairs




- PLAN NOTES:
- SEE ARCHITECTURAL DRAWINGS FOR EXISTING BUILDING DIMENSIONS AND ELEVATIONS NOT SHOWN.
 - SEE DETAIL 1/S502 FOR TYPICAL EXISTING ROOF TRUSS REPAIR DETAIL.
 - ALL DAMAGED AND/OR DETERIORATED EXISTING ROOF TRUSS MEMBERS SHALL BE REPLACED WITH 2x6 FRAMING. BASIS OF BID IS (6) BROKEN OR CRACKED 3/8"x5" TRUSS WEB MEMBERS, (1) CRACKED 2"x6" TRUSS WEB MEMBER, AND (1) CRACKED TRUSS TOP CHORD MEMBER. CONNECTIONS FOR REPLACEMENT FRAMING SHALL BE PER THE CONNECTION DETAILS ON SHEET S502.
 - PROVIDE (2) L3 1/2 x 3 x 3/8 LLBB GALVANIZED LINTEL AT MECHANICAL OPENINGS FROM 9" TO 2'-6" WIDE TO SUPPORT (E) TERRACOTTA AND FACE BRICK WALL. PROVIDE 4" MIN BEARING AT EACH END. REBUILD MASONRY WALL ABOVE LINTEL.
 - PROVIDE HEADERS IN LIGHT GAGE WALLS PER 9/S502 FOR MECHANICAL AND WINDOW OPENINGS FROM 1'-4" TO 2'-6" WIDE.
 - SEE ARCHITECTURAL DRAWINGS FOR TRUSS BEARING ELEVATION.
 - PORCH ROOF SHEATHING SHALL BE 1/2" THICK PLYWOOD.

1
ROOF FRAMING PLAN
SCALE 1/4" = 1'-0"



Revisions by the VA	09/19/2019
100% Construction Documents Submission	05/31/13
95% Construction Documents Submission	05/10/13
60% Design Development Submission	03/28/13
Revisions:	Date

ARCHITECT / ENGINEERS:



2 Wisconsin Circle; Suite 820
Chevy Chase, MD 20815-7003
301.718.0080
www.okksstudios.com

HENRY ADAMS
Consulting Engineers


Henry Adams, LLC
Consulting Engineers
600 Baltimore Avenue
Baltimore, MD 21204
Tel: (410)296-6500
Fax: (410)296-3156

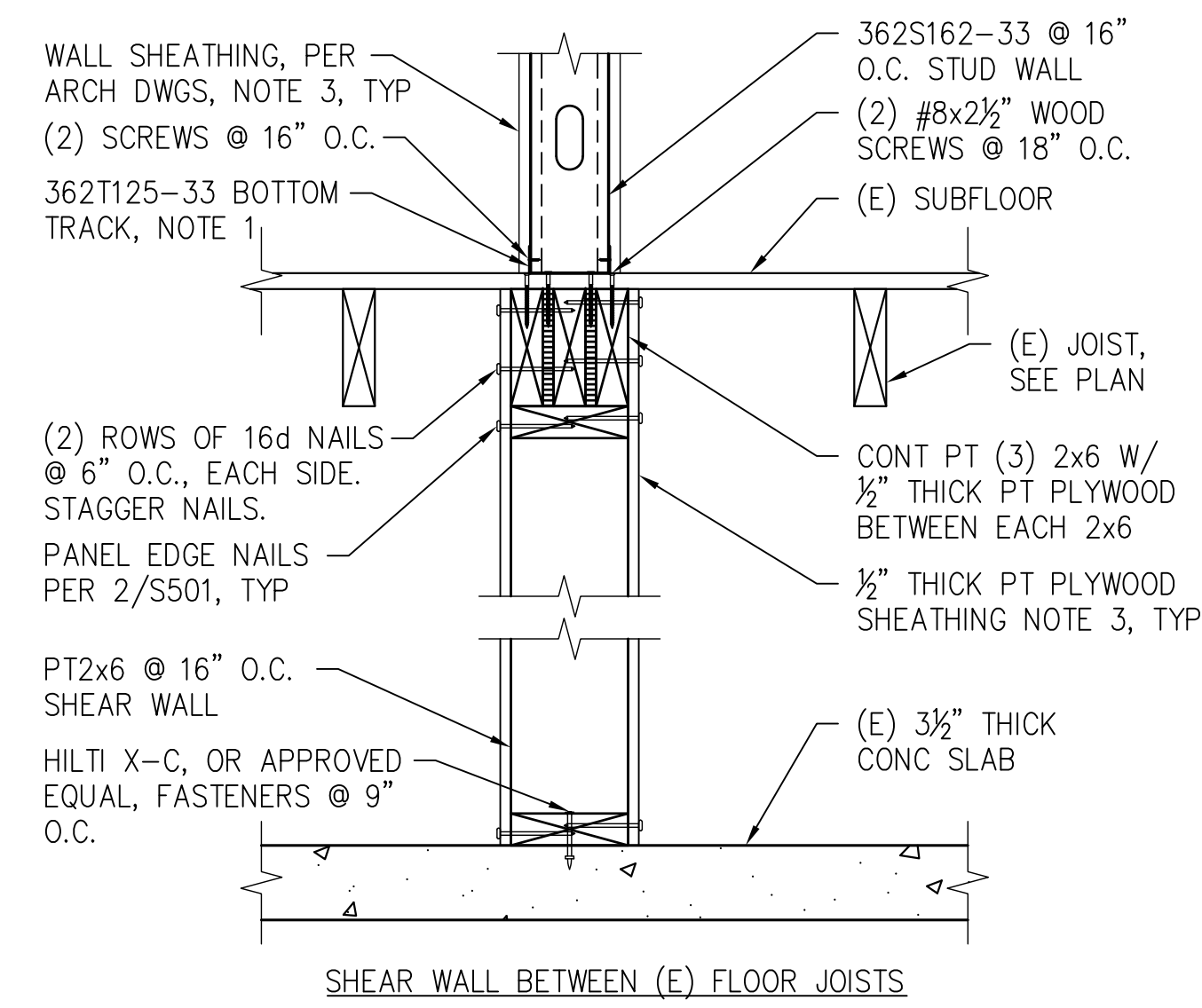
Mechanical Electrical & Plumbing Engineers

Woods Peacock Engineering Consultants
5250 Cherokee Avenue, Suite 420
Alexandria, VA 22312-2052
Tel: (703) 658-4400
Fax: (703) 658-4404

Stamp/Seal	Drawing Title ROOF FRAMING PLAN	Project Title BUILDING 405B RENOVATIONS	VA Project Number 613-13-115
Approved: Project Director	Location MARTINSBURG, WV	Date 05/31/2013	Building Number 405B
	Checked TMP	Drawn CAD	Drawing Number S103

Office of Construction and Facilities Management

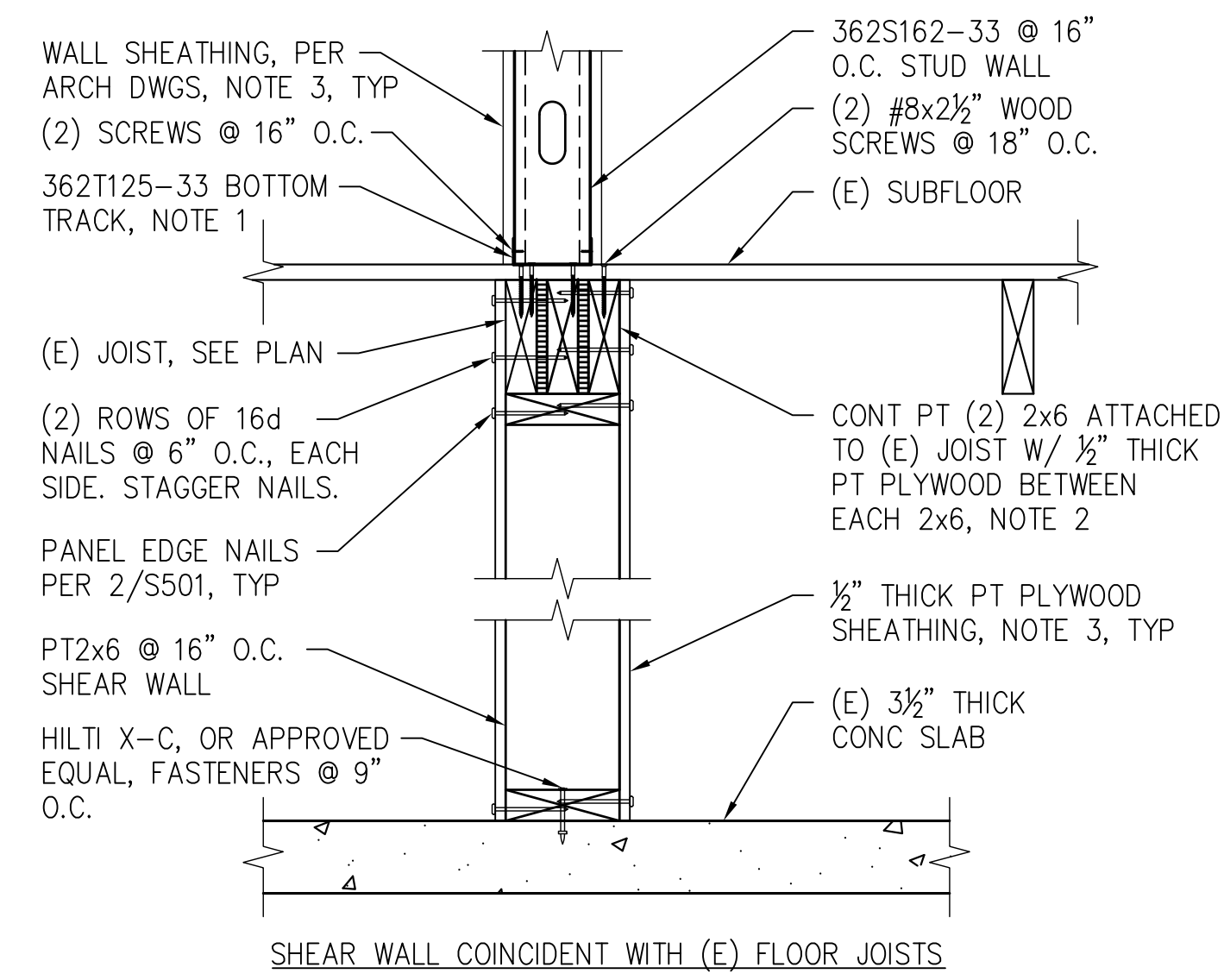




- NOTES:
1. ATTACH TRACK TO SUBFLOOR WITH (2) #8x2 1/2" WOOD SCREWS @ 18" O.C. STAGGER SCREWS WITH SCREWS ATTACHING (3) 2x6 TO SUBFLOOR.
 2. ATTACH CONT 2x6'S TO EXISTING JOIST SUCH THAT THE WOOD FRAMED SHEAR WALL IS CENTERED UNDER THE ABOVE COLD FORMED SHEAR WALL AS CLOSELY AS POSSIBLE.
 3. SEE ELEVATIONS 2/S501 AND 3/S501 FOR SHEATHING ATTACHMENT REQUIREMENTS.

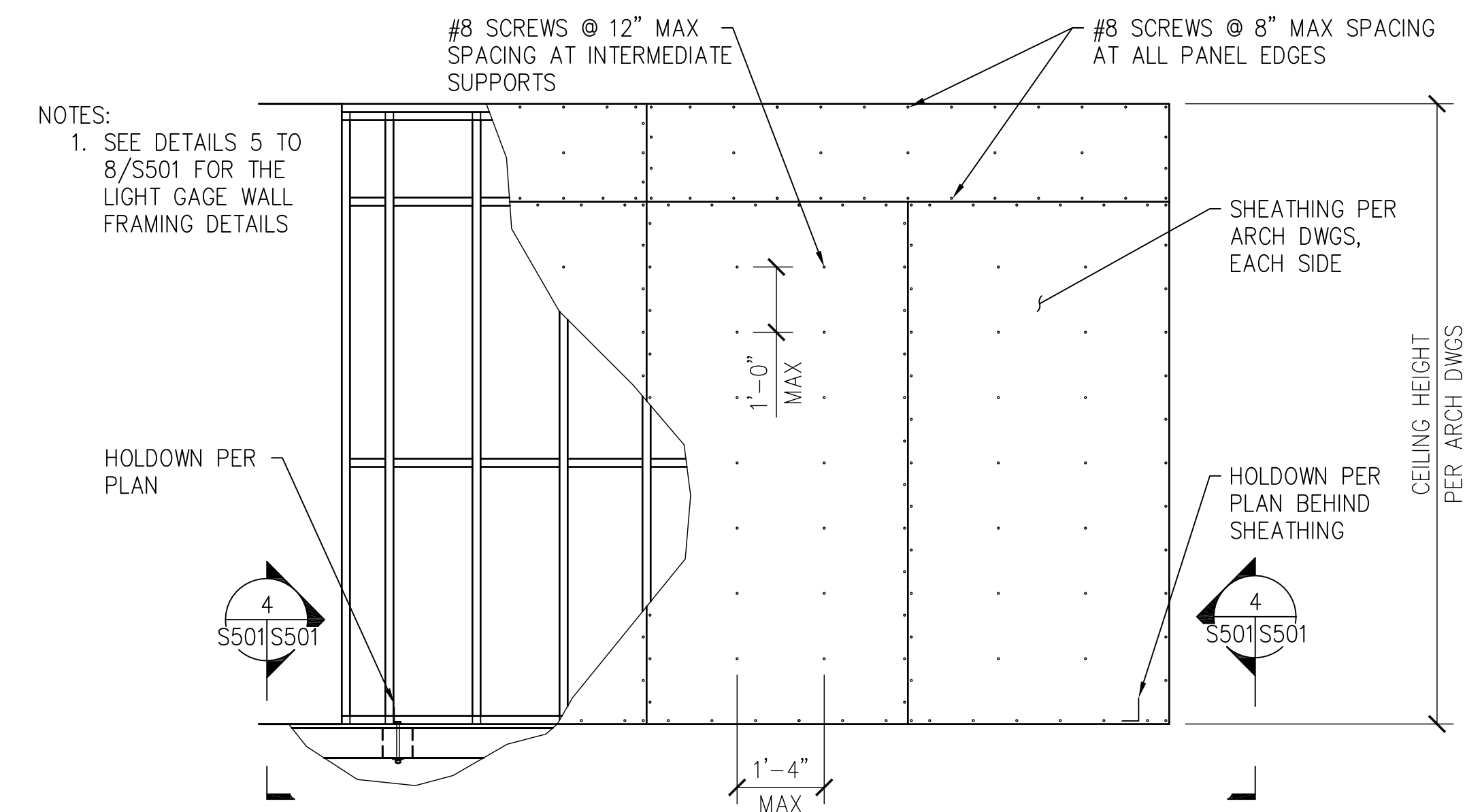
1 TYPICAL SHEAR WALL SECTION

S101,S102|S501 SCALE 1/2" = 1'-0"



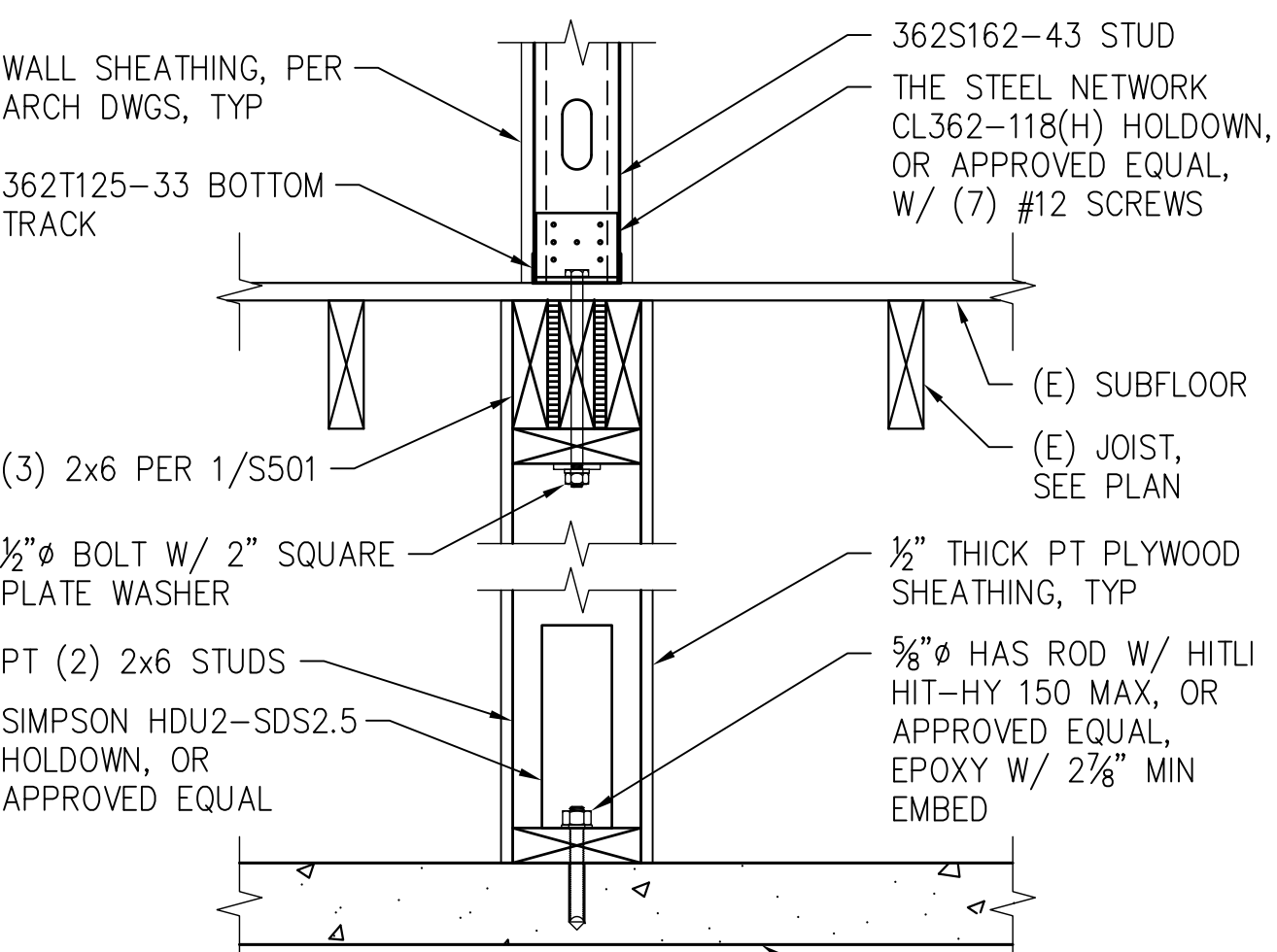
2 TYPICAL CRAWLSPACE WOOD FRAMED SHEAR WALL ELEVATION

S101|S501 SCALE 1/2" = 1'-0"



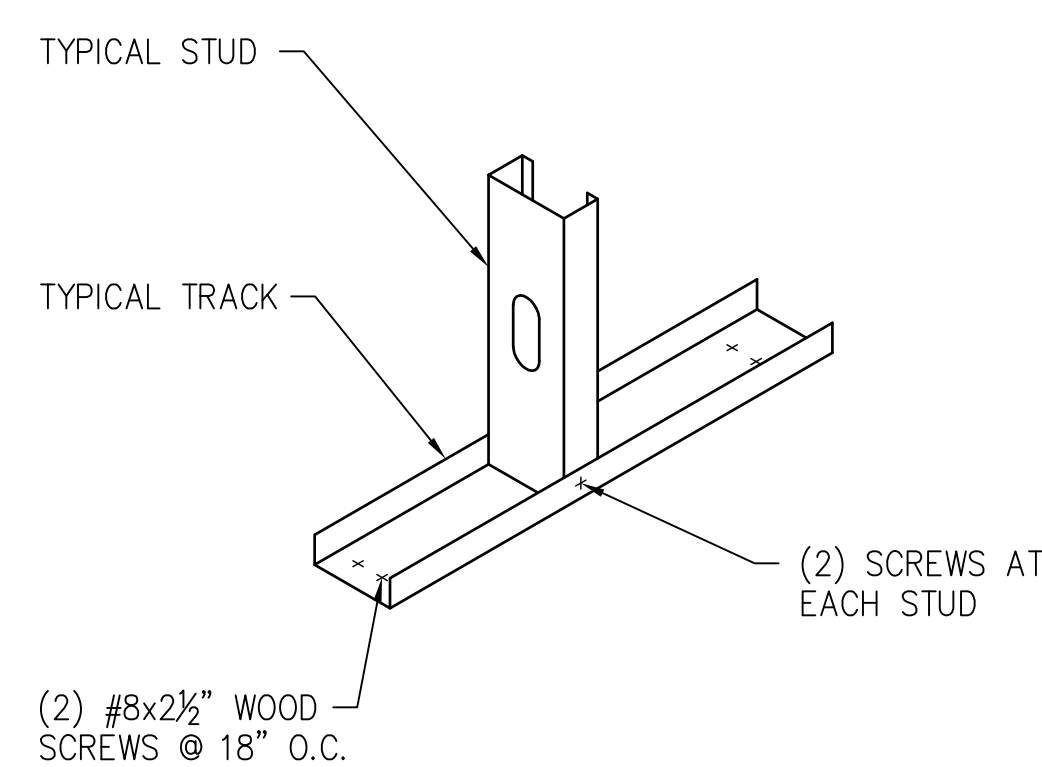
3 TYPICAL FIRST FLOOR COLD FORMED METAL SHEAR WALL ELEVATION

S102,S103|S501 SCALE 1/2" = 1'-0"



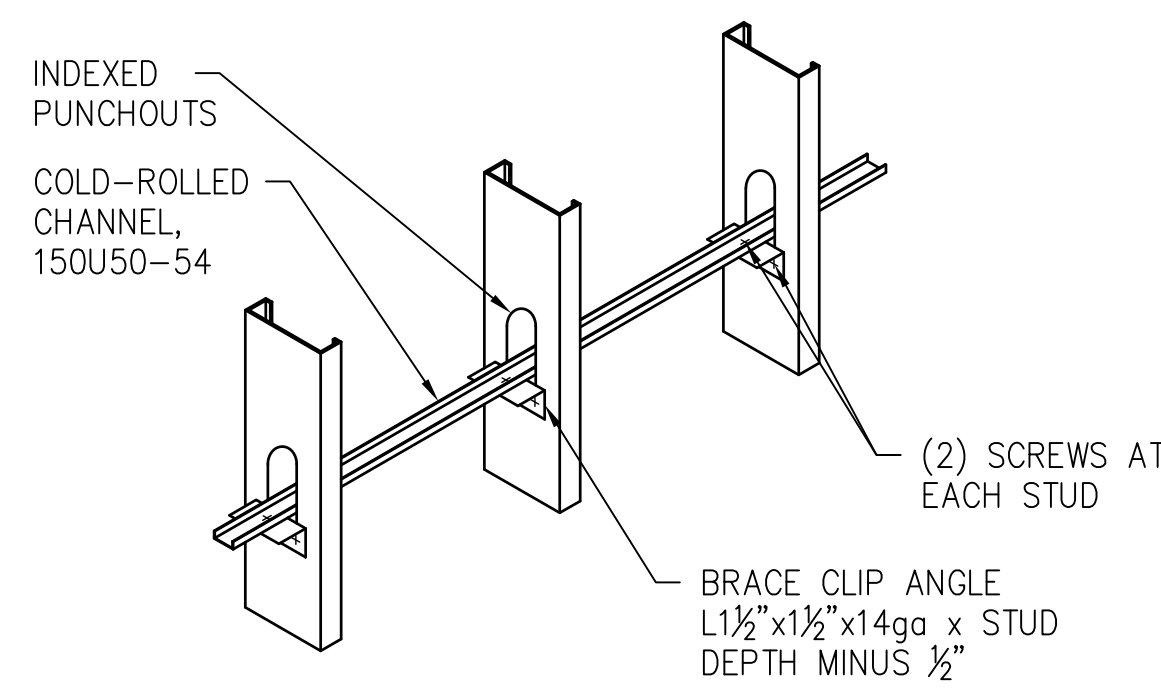
4 TYPICAL SHEAR WALL ANCHORAGE DETAIL

S501|S501 SCALE 1/2" = 1'-0"



5 STUD BASE DETAIL

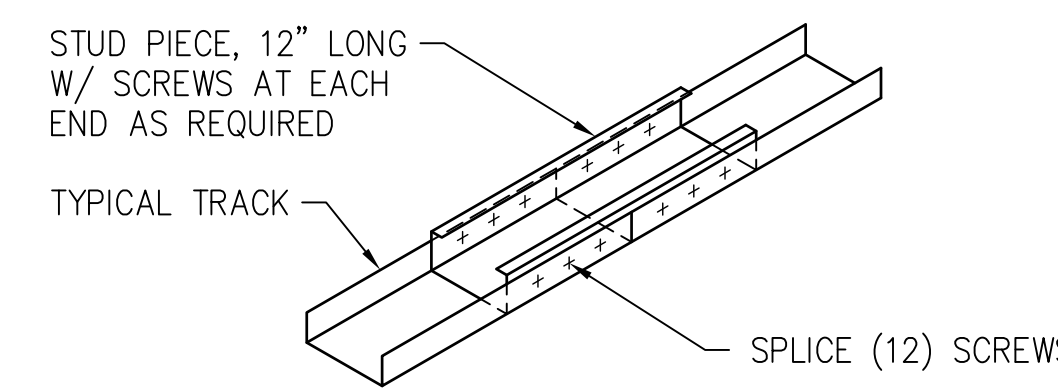
S501|S501 SCALE 1/2" = 1'-0"



- NOTES:
1. CHANNEL BRACING TO BE LOCATED AT 48" O.C. MAXIMUM FOR FULL HEIGHT OF ALL WALLS, TYPICAL.

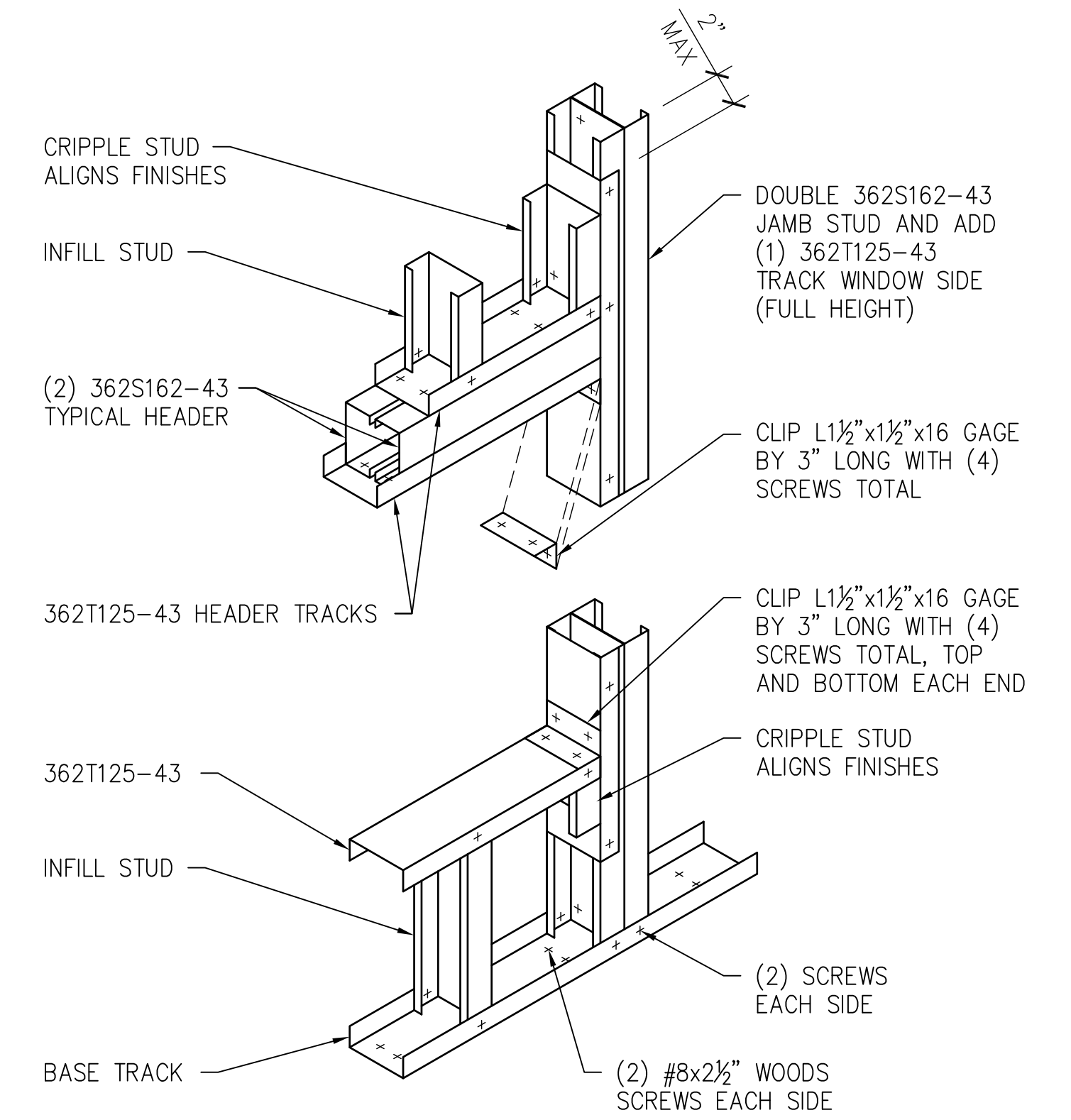
6 TYPICAL CHANNEL BRACING

S501|S501 SCALE 1/2" = 1'-0"



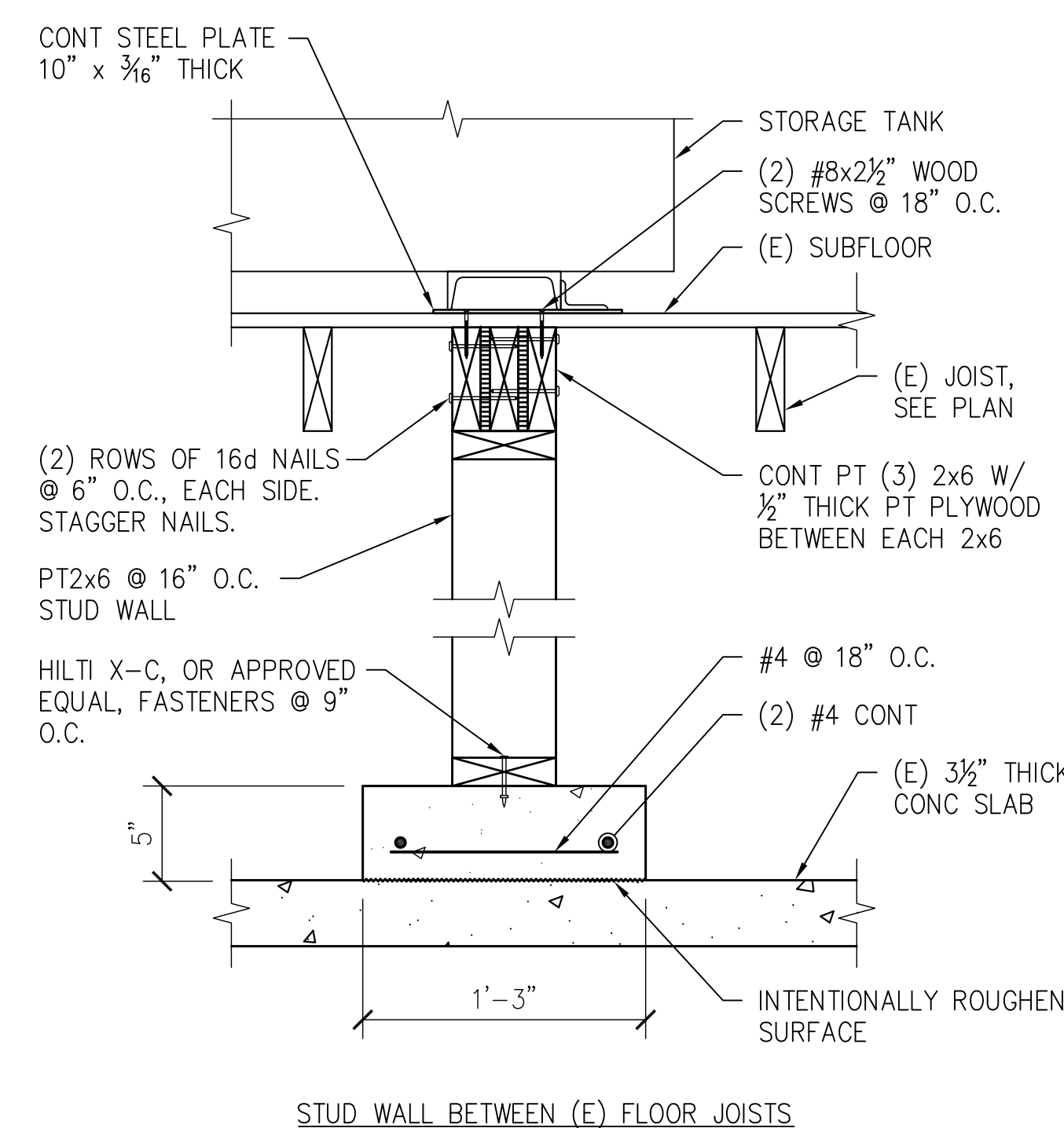
7 TRACK SPLICE CONNECTION

S501|S501 SCALE 1/2" = 1'-0"



8 TYPICAL PUNCHED OPENING FRAMING

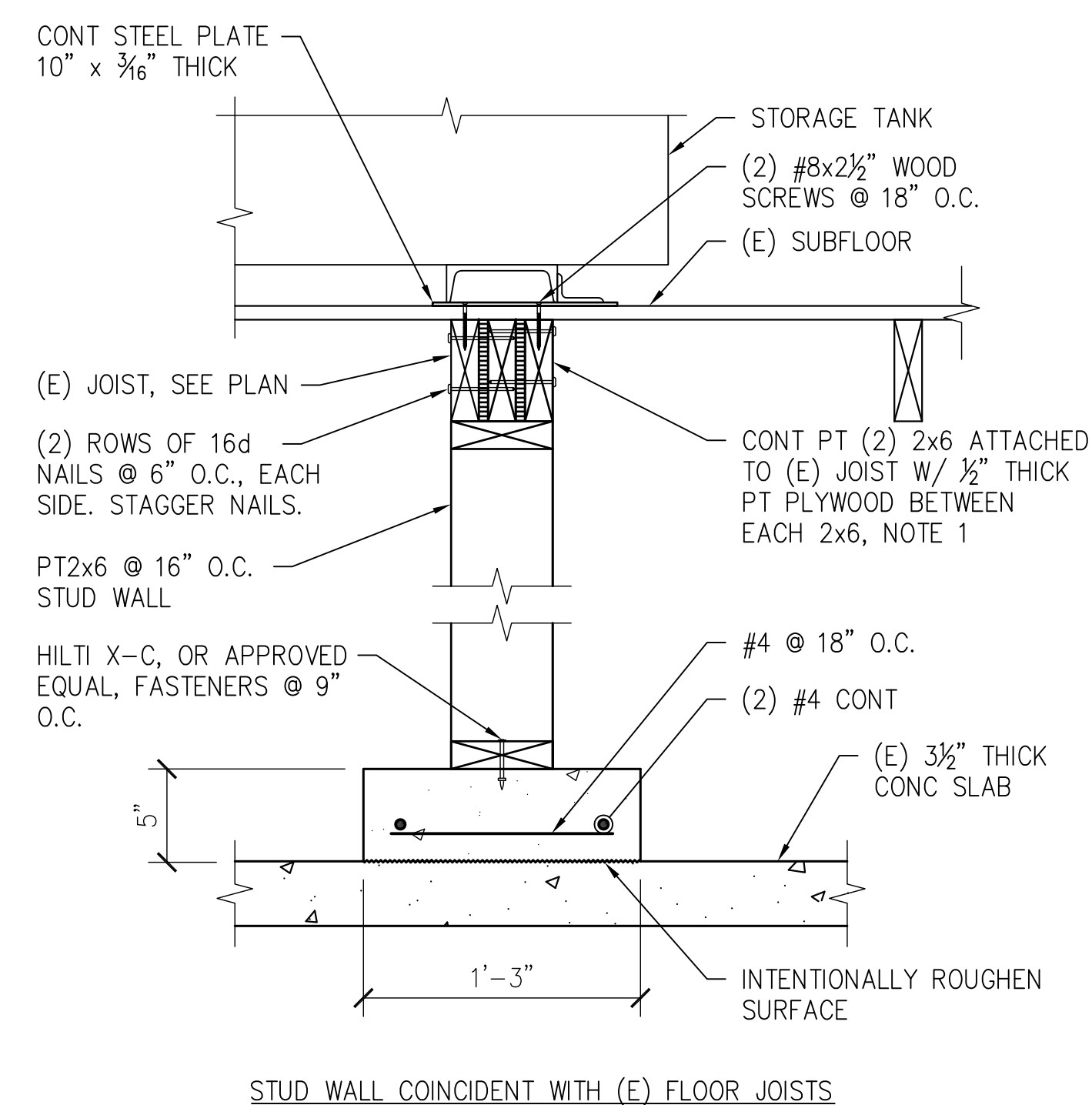
S501|S501 SCALE 1/2" = 1'-0"



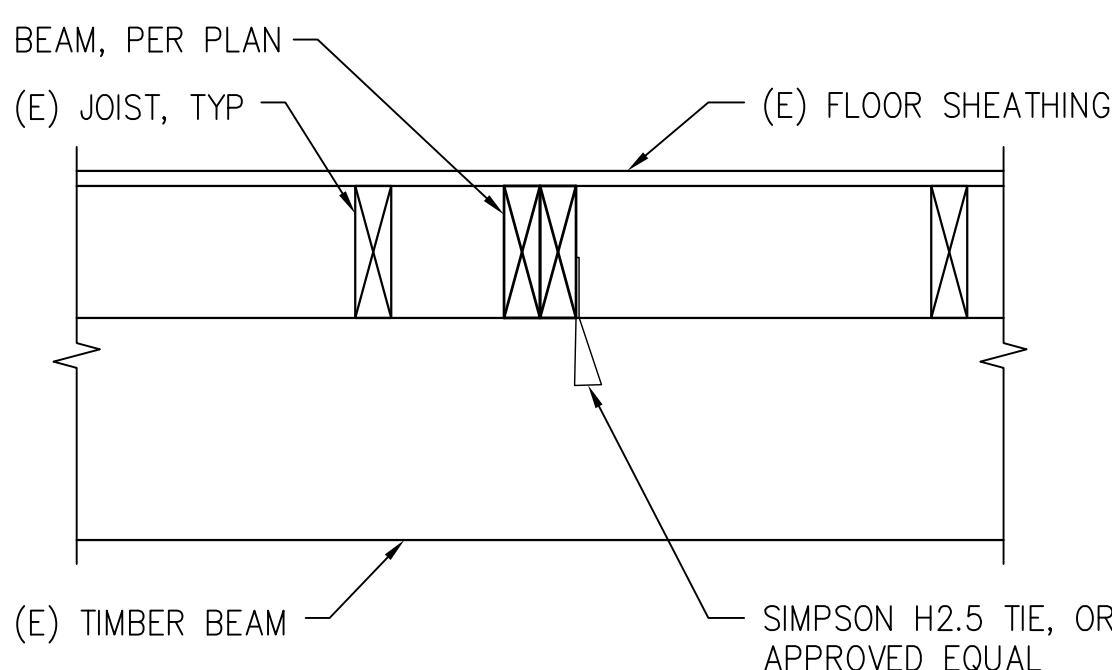
- NOTES:
1. ATTACH CONT 2x6'S TO EXISTING JOIST SUCH THAT THE WOOD FRAMED SHEAR WALL IS CENTERED UNDER THE ABOVE STORAGE TANK AS CLOSELY AS POSSIBLE.

9 TYPICAL STUD WALL SECTION

S101,S102|S501 SCALE 1/2" = 1'-0"

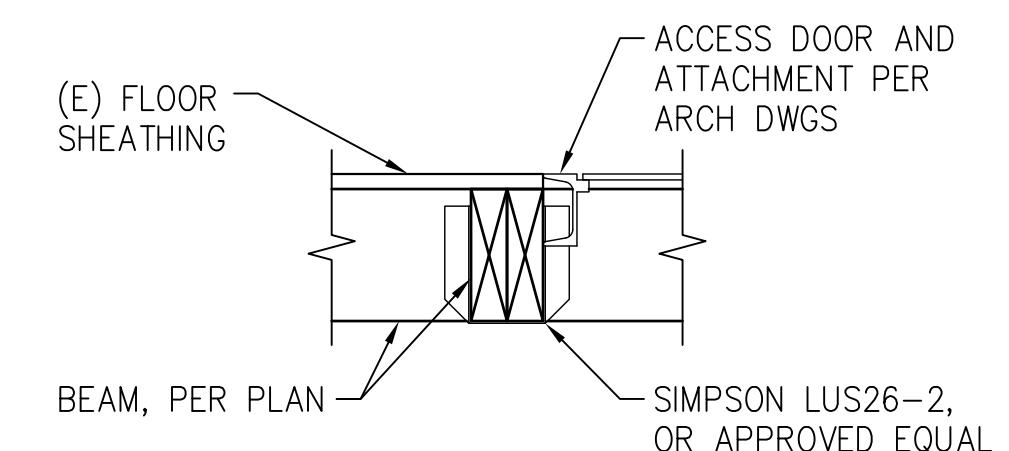


Delete Under Alternate No. 2



10 TIMBER BEAM CONNECTION

S102|S501 NOT TO SCALE



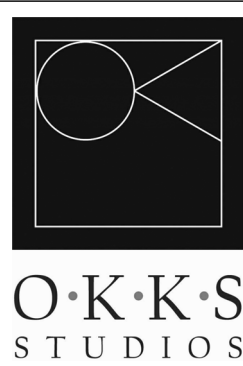
11 TIMBER BEAM CONNECTION

S102|S501 NOT TO SCALE

Note: All Wood to be Fire-Rated

Revisions by the VA	09/19/2019
100% Construction Documents Submission	05/31/13
95% Construction Documents Submission	05/10/13
60% Design Development Submission	03/28/13
Revisions:	Date

ARCHITECT / ENGINEERS:



2 Wisconsin Circle; Suite 820
Chevy Chase, MD 20815-7003
301.718.0080
www.okkstudios.com

HENRY ADAMS
Consulting Engineers

Mechanical Electrical & Plumbing Engineers

Henry Adams, LLC
Consulting Engineers
600 Baltimore Avenue
Baltimore, MD 21204
Tel: (410)296-6500
Fax: (410)296-3156

Woods Peacock Engineering
Consultants
5250 Cherokee Avenue, Suite 420
Alexandria, VA 22312-2052
Tel: (703) 658-4400
Fax: (703) 658-4404

Stamp/Seal

Drawing Title
SECTIONS AND DETAILS

Approved: Project Director

Project Title
BUILDING 405B
RENOVATIONS

Location
MARTINSBURG, WV

Date
05/31/2013

Checked
TMP

Drawn
CAD

VA Project Number
613-13-115

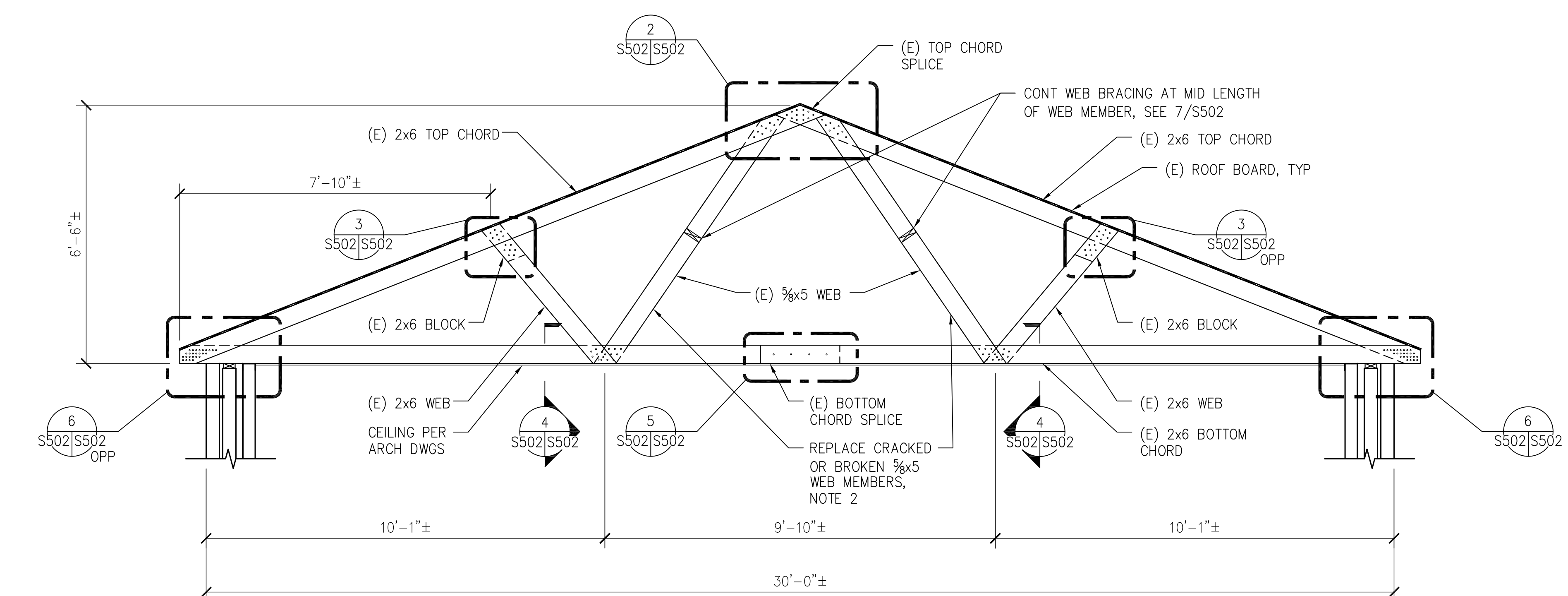
Building Number
405B

Drawing Number

S501

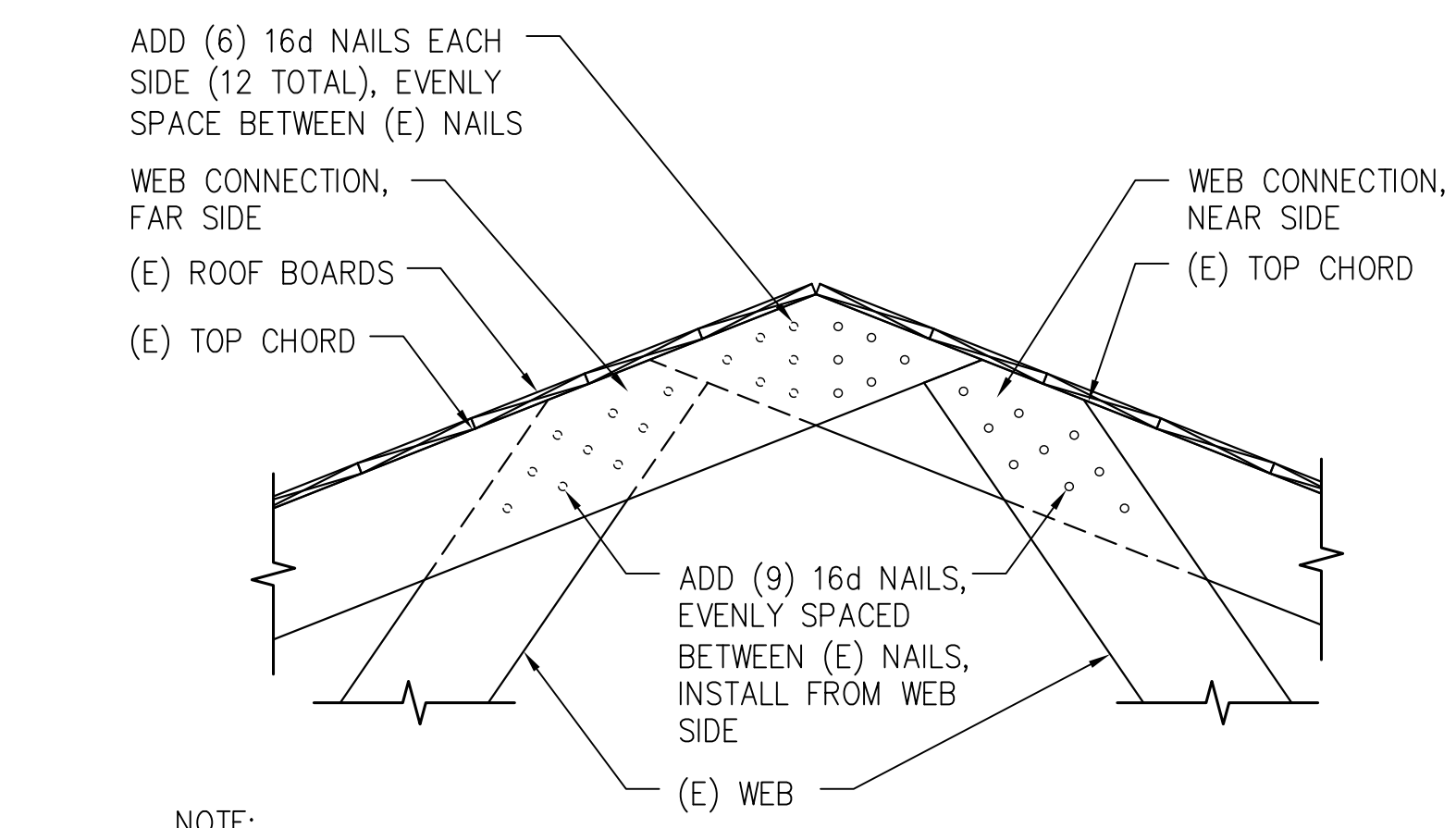
Office of
Construction
and Facilities
Management



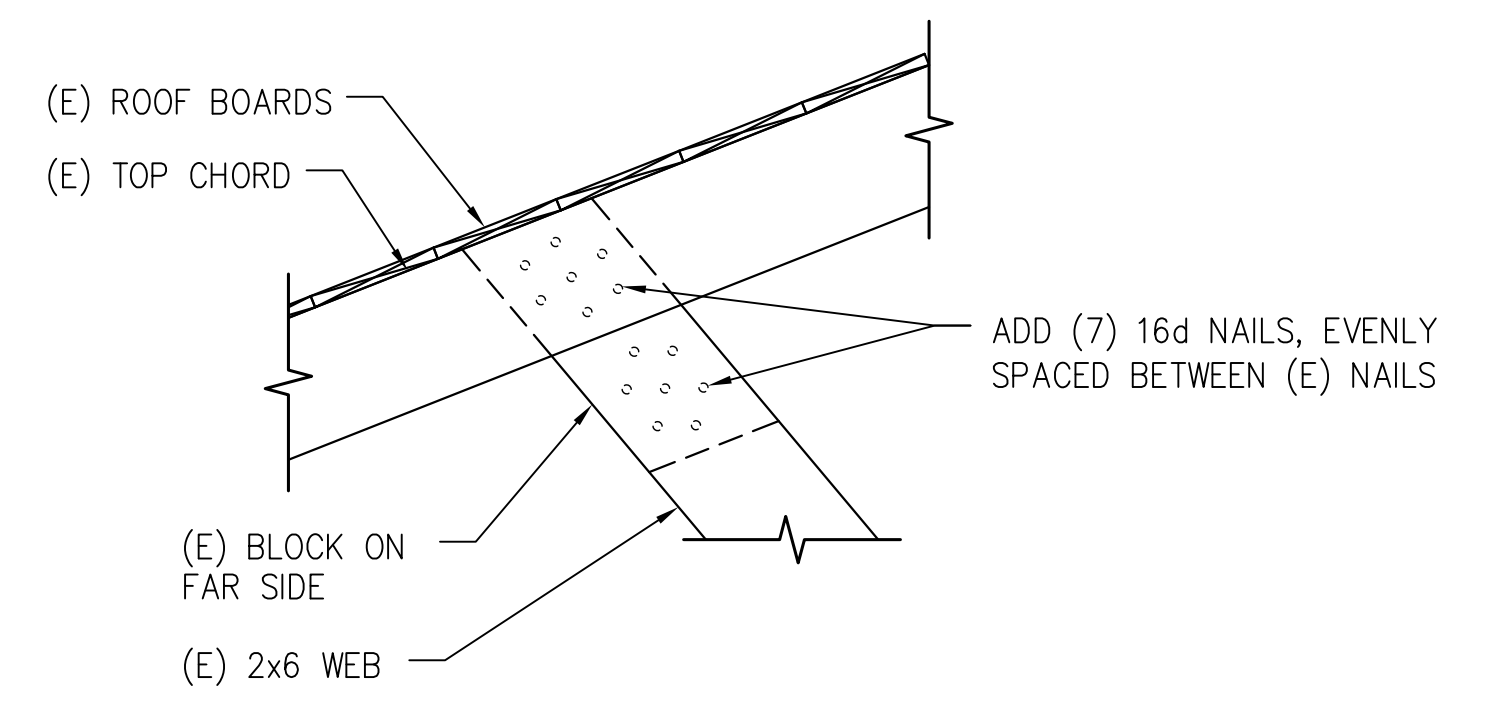


NOTES:
1. VERIFY THAT THERE ARE (5) (E) NAILS AT EACH MEMBER-TO-MEMBER CONNECTION. WHERE THERE ARE FEWER THAN (5) NAILS, INSTALL AN ADDITIONAL NAIL FOR EACH "MISSING" NAIL. BASIS OF BID IS (6) BROKEN OR CRACKED 5/8x5" WEB MEMBERS, (1) CRACKED 2x6" TRUSS WEB MEMBER AND (1) CRACKED TRUSS TOP CHORD MEMBER. ALL BROKEN OR CRACKED WEB MEMBERS SHALL BE REPLACED WITH 2x6 FRAMING.

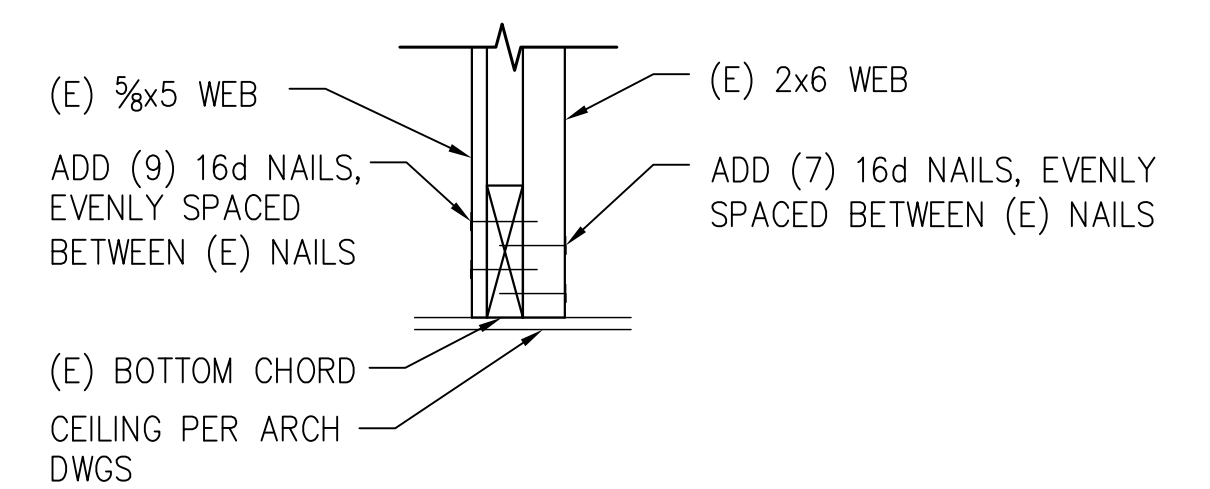
1 TYPICAL EXISTING ROOF TRUSS REPAIR DETAIL
S103/S502 SCALE: 1/2" = 1'-0"



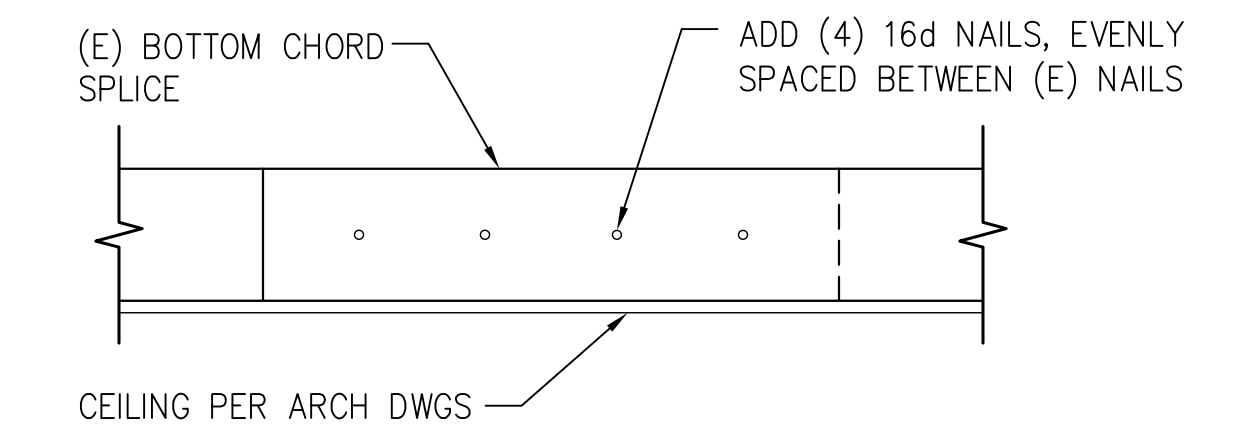
2 WEB CONNECTION AT PEAK
S502/S502 SCALE: 1/2" = 1'-0"



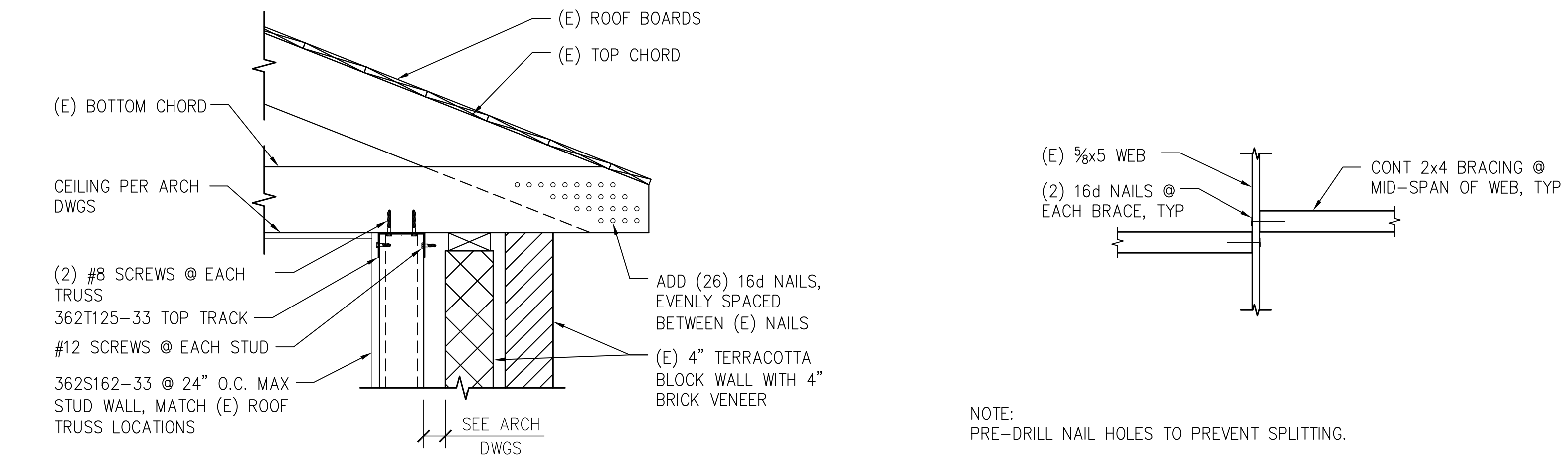
3 WEB CONNECTION AT TOP CHORD
S502/S502 SCALE: 1/2" = 1'-0"



4 WEB CONNECTION AT BOTTOM CHORD
S502/S502 SCALE: 1/2" = 1'-0"

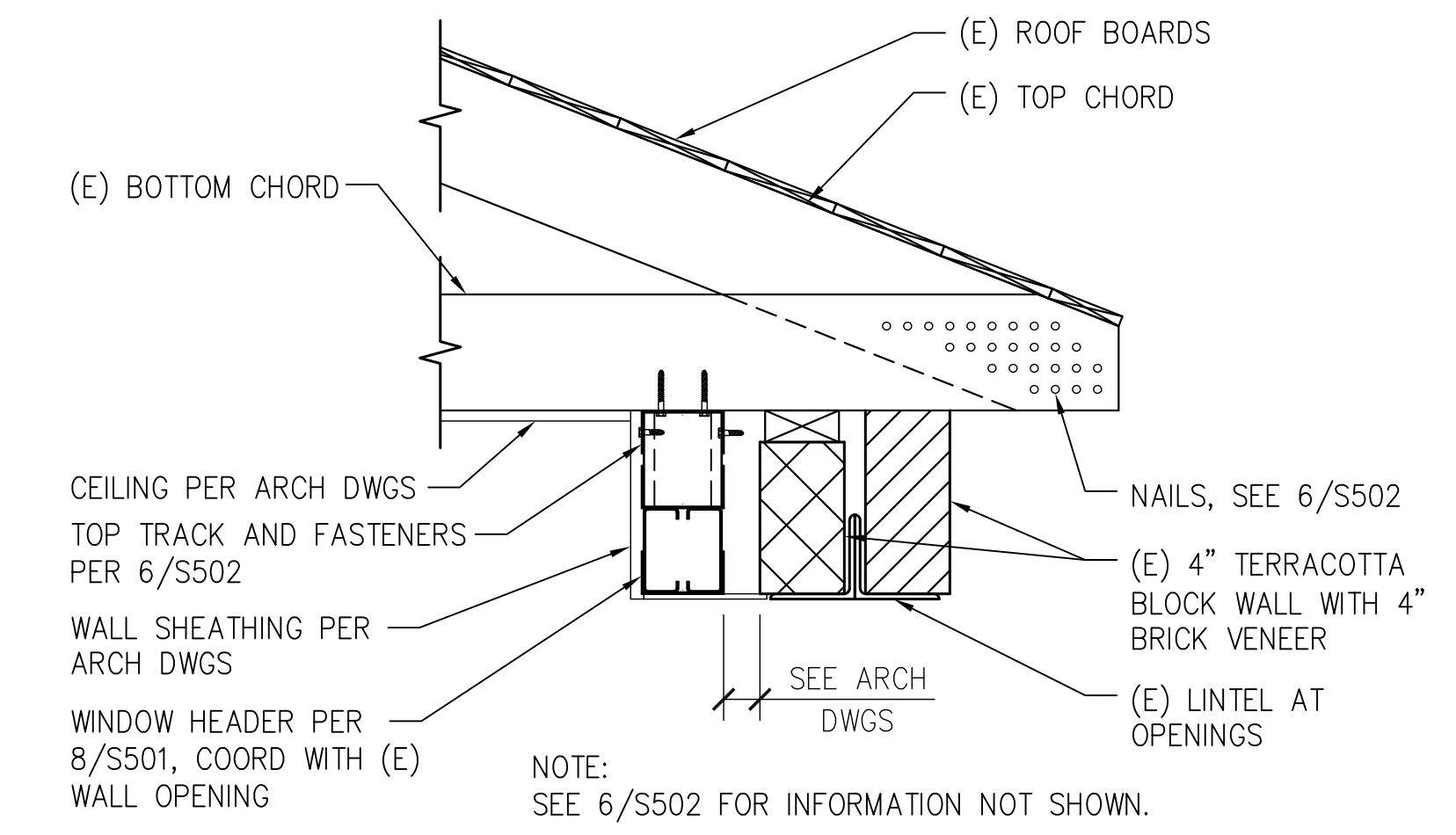


5 BOTTOM CHORD SPLICE
S502/S502 SCALE: 1/2" = 1'-0"

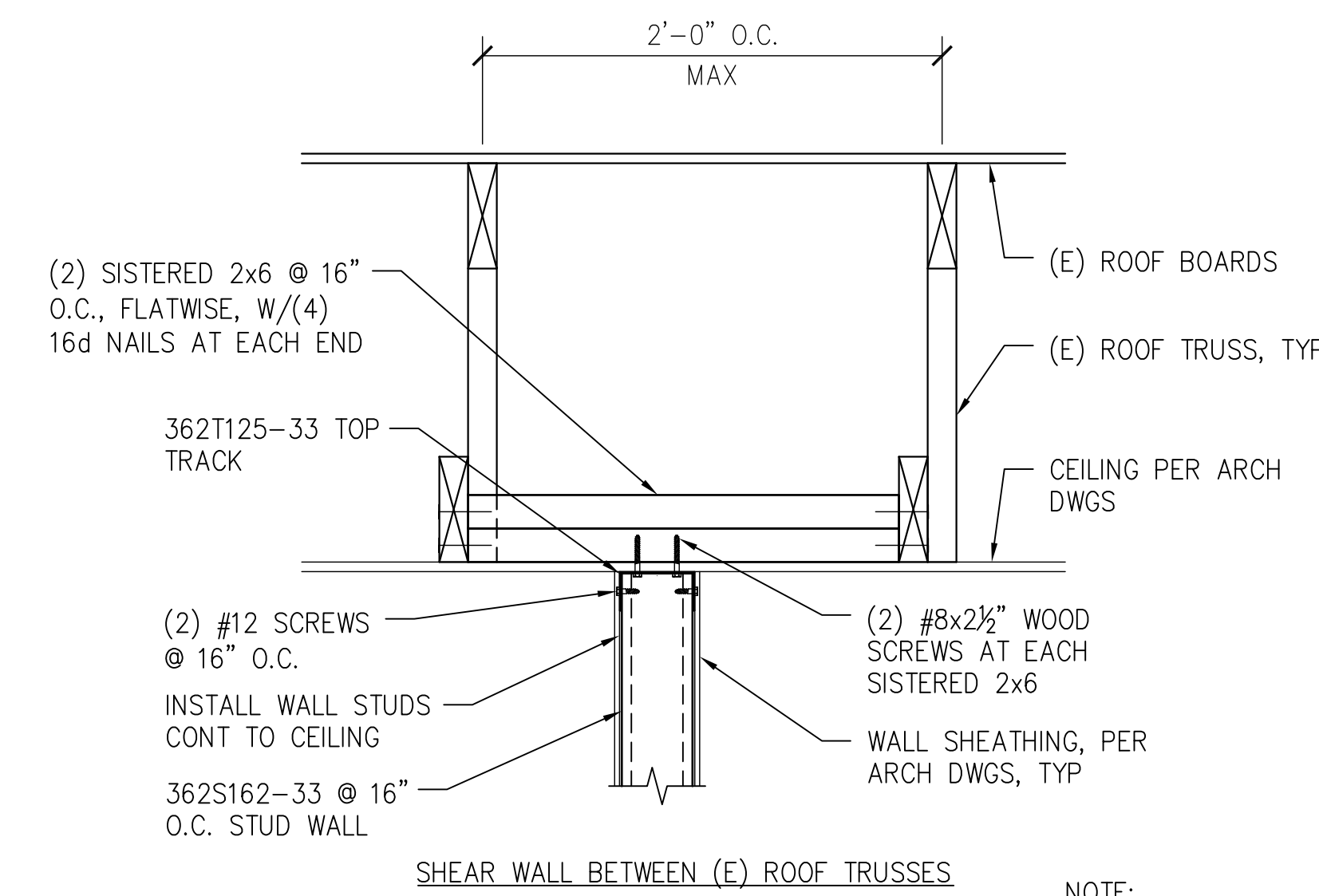


6 TRUSS BEARING
S103,S502/S502 SCALE: 1/2" = 1'-0"

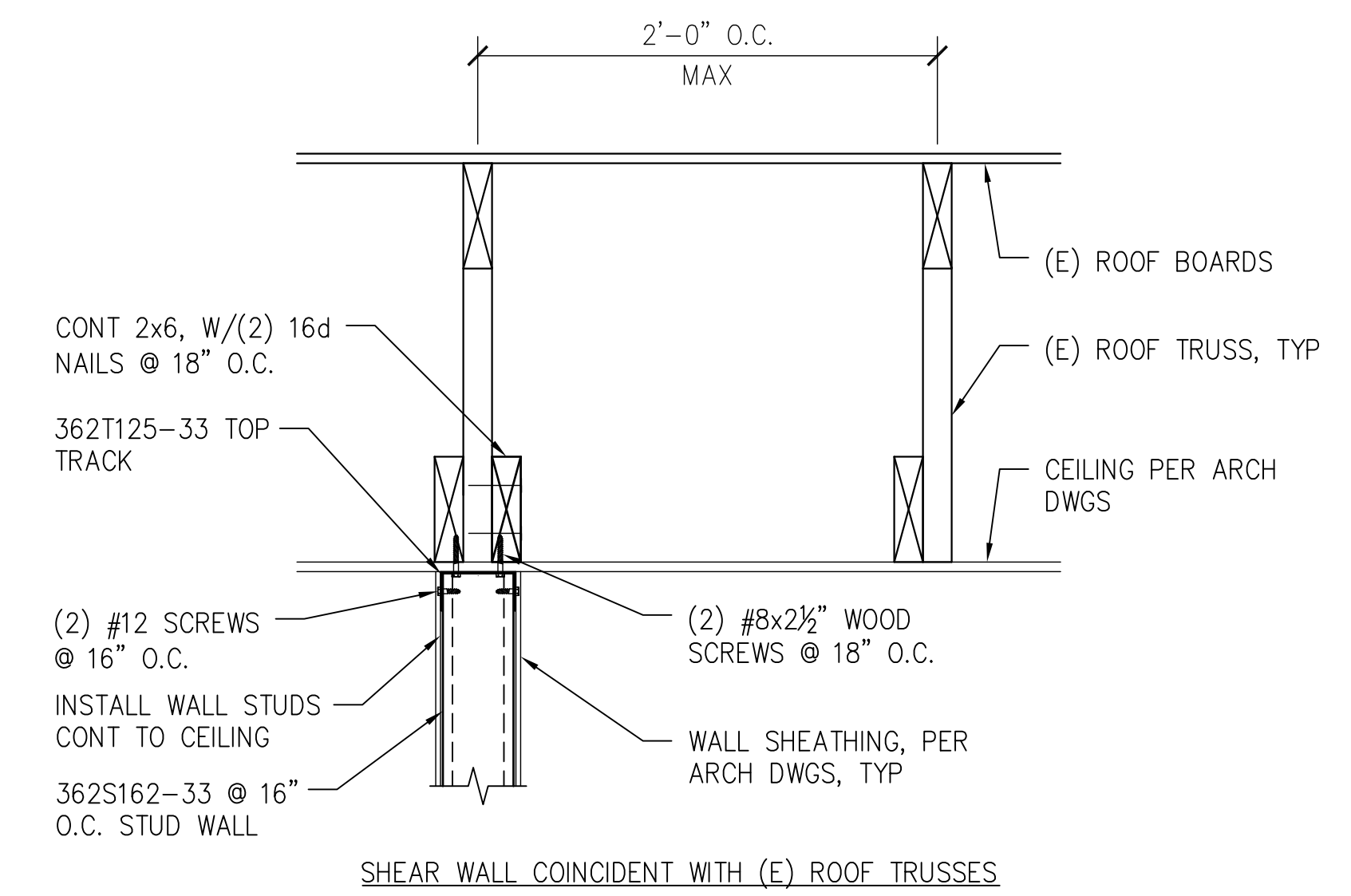
7 (E) WEB MEMBER BRACING
S502/S502 SCALE: 1/2" = 1'-0"



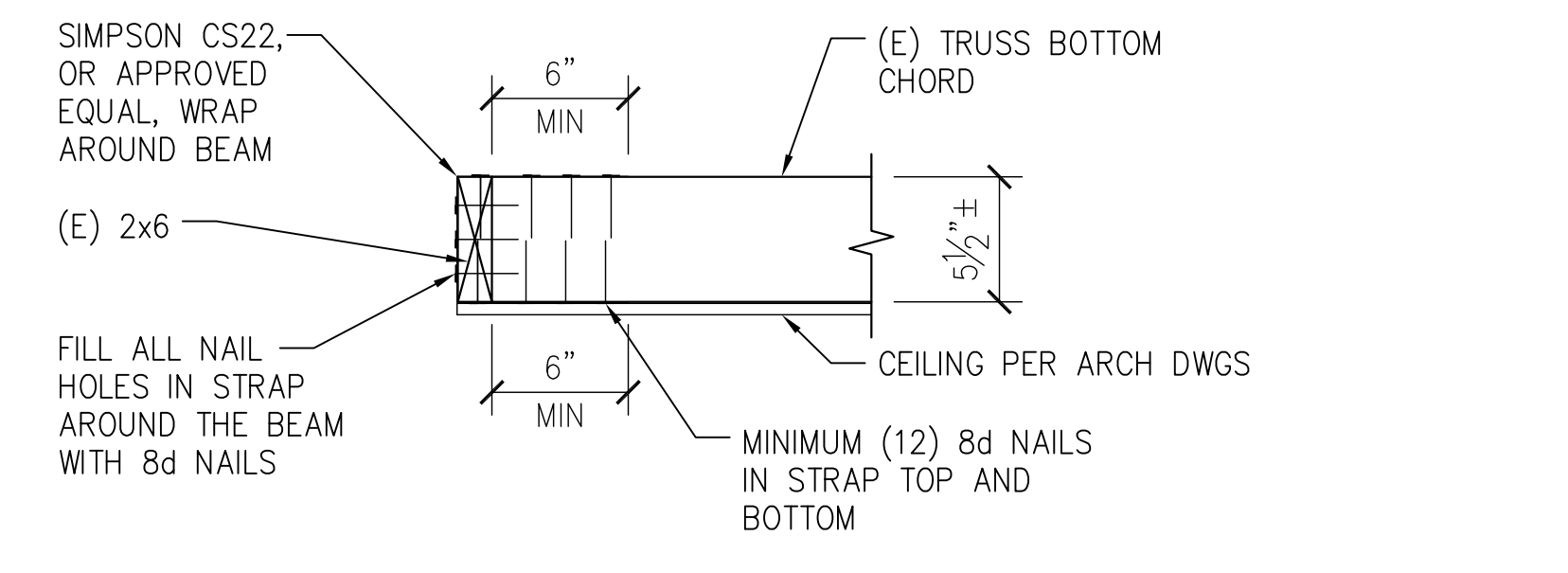
9 TRUSS BEARING AT WALL OPENING
S103/S502 SCALE: 1/2" = 1'-0"



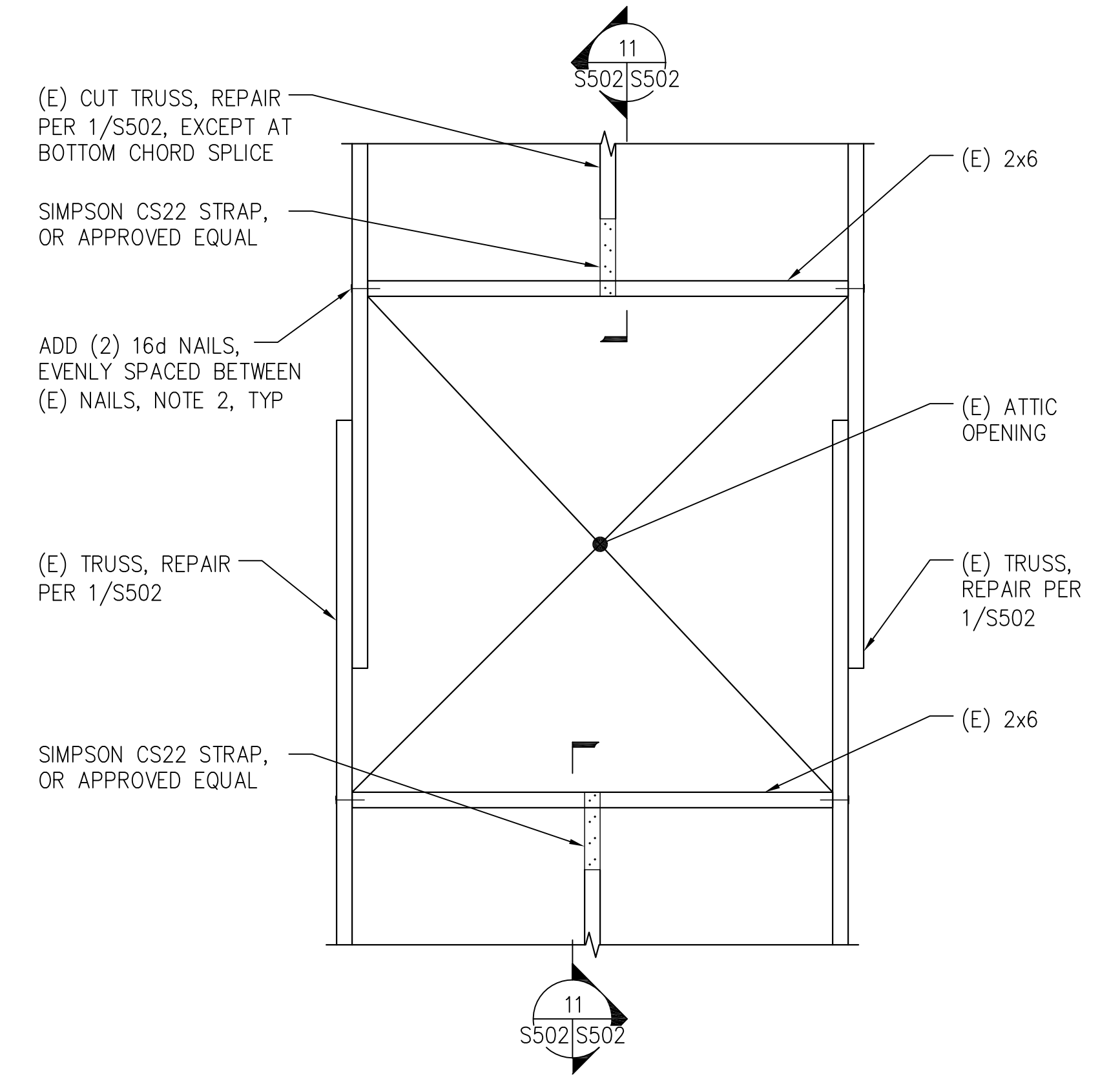
8 SHEAR WALL AT CEILING
S103/S502 SCALE: 1/2" = 1'-0"



7 (E) WEB MEMBER BRACING
S502/S502 SCALE: 1/2" = 1'-0"



11 TRUSS CHORD TO BEAM CONNECTION
S502/S502 SCALE: 1/2" = 1'-0"



10 EXISTING ATTIC OPENING
S103/S502 NOT TO SCALE

Note: All Wood to be Fire-Rated

Revisions by the VA	09/19/2019
100% Construction Documents Submission	05/31/13
95% Construction Documents Submission	05/10/13
60% Design Development Submission	03/28/13
Revisions:	Date

ARCHITECT / ENGINEERS:

2 Wisconsin Circle; Suite 820
Chevy Chase, MD 20815-7003
301.718.0080
www.okkstudios.com

HENRY ADAMS
Consulting Engineers

Henry Adams, LLC
Consulting Engineers
600 Baltimore Avenue
Baltimore, MD 21204
Tel: (410)296-6500
Fax: (410)296-3156

Mechanical Electrical & Plumbing Engineers

Woods Peacock Engineering Consultants
5250 Cherokee Avenue, Suite 420
Alexandria, VA 22312-2052
Tel: (703) 658-4400
Fax: (703) 658-4404

Stamp/Seal

Drawing Title
SECTIONS AND DETAILS

Approved: Project Director

Project Title
BUILDING 405B RENOVATIONS

Location
MARTINSBURG, WV

Date
05/31/2013

Checked
TMP

Drawn
CAD

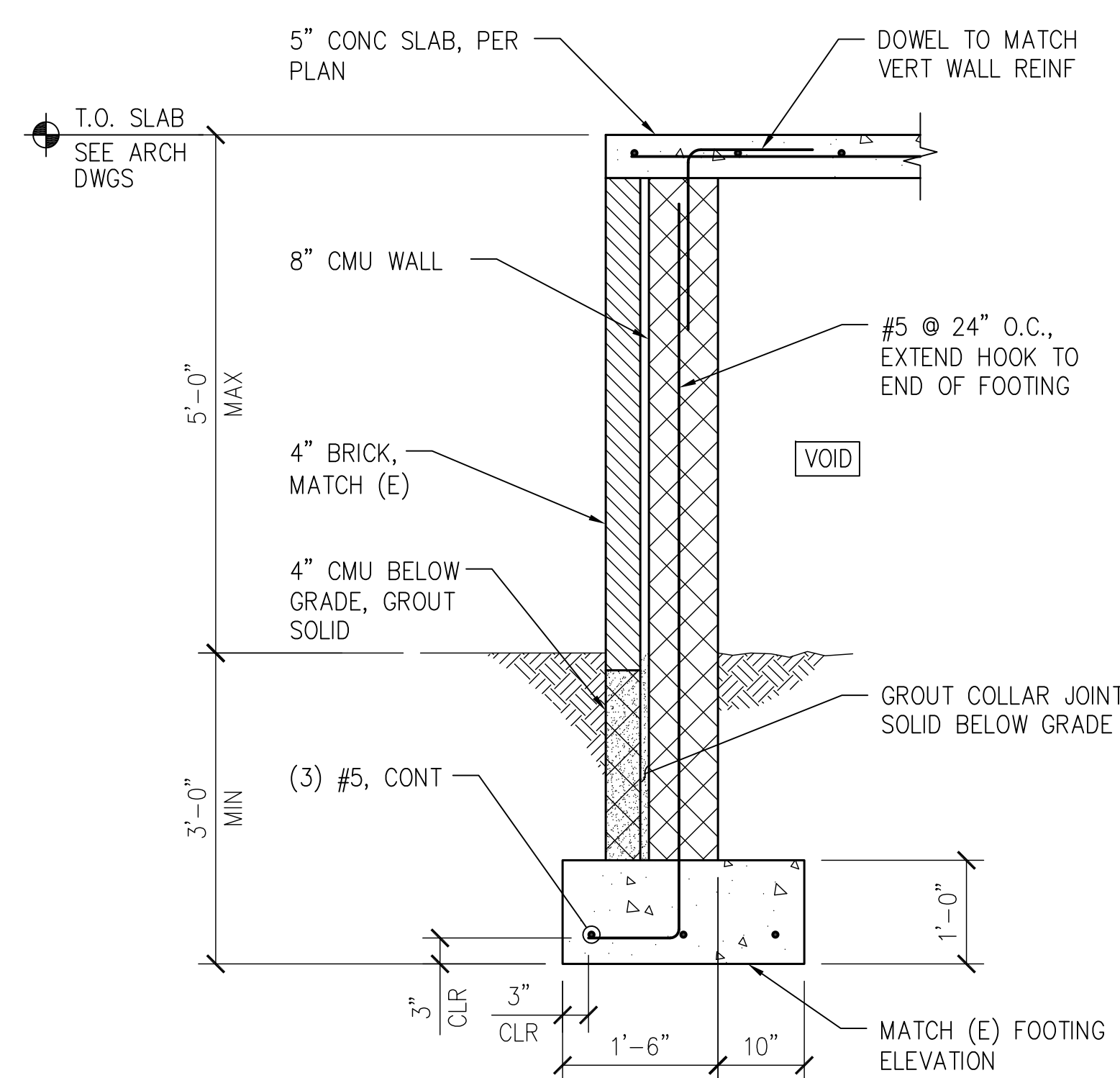
VA Project Number
613-13-115

Building Number
405B

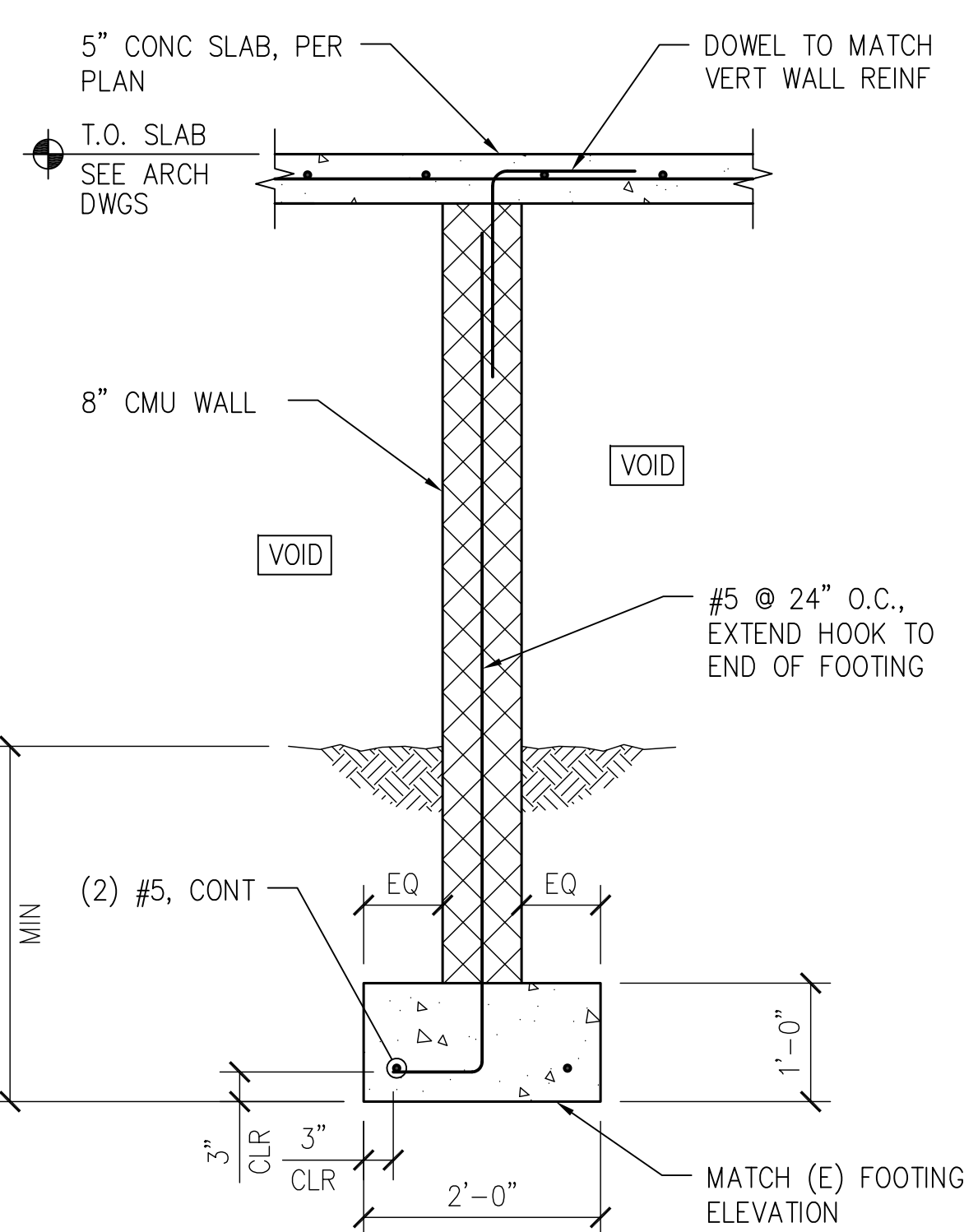
Drawing Number
S502

Office of Construction and Facilities Management

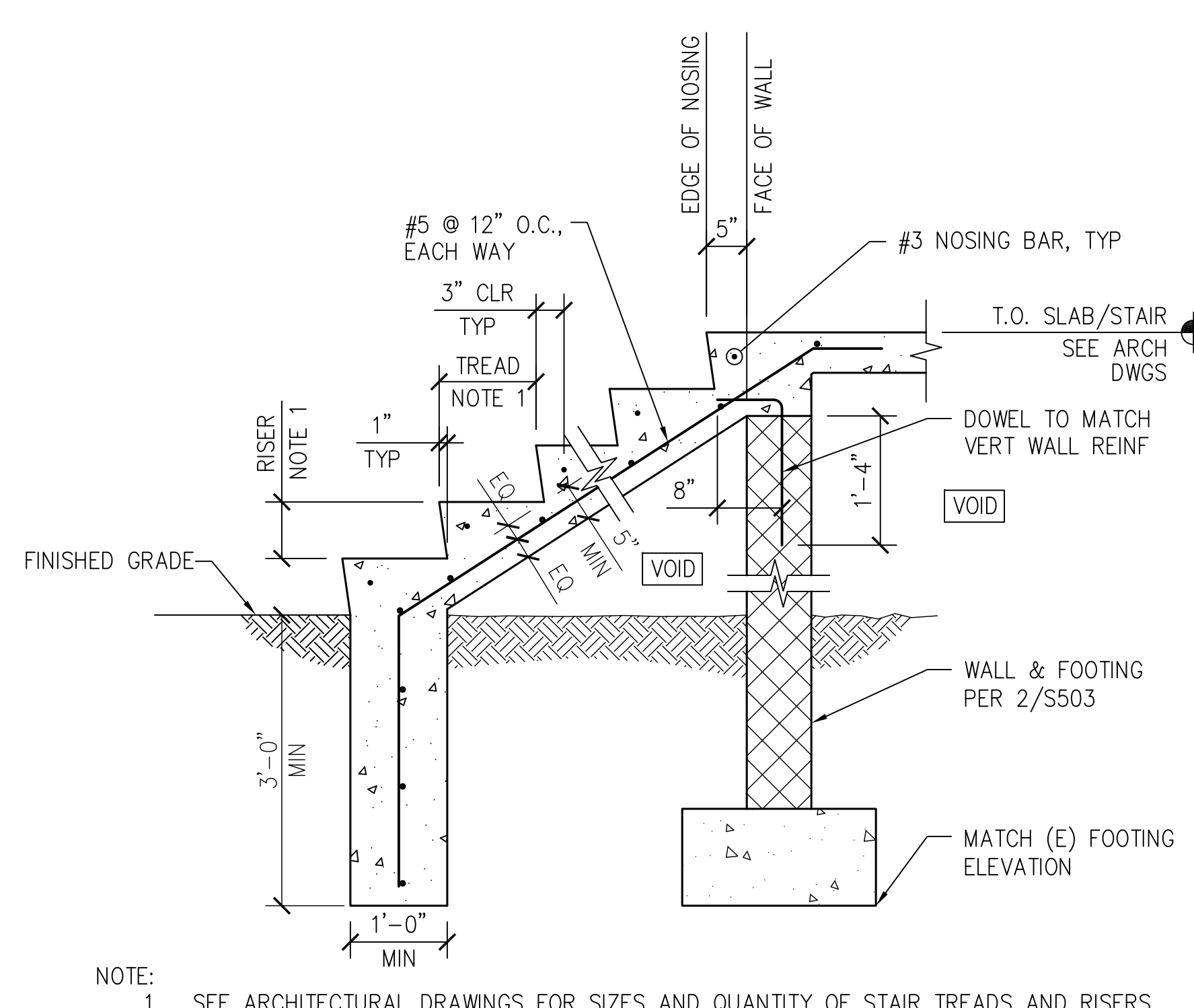
Department of Veterans Affairs



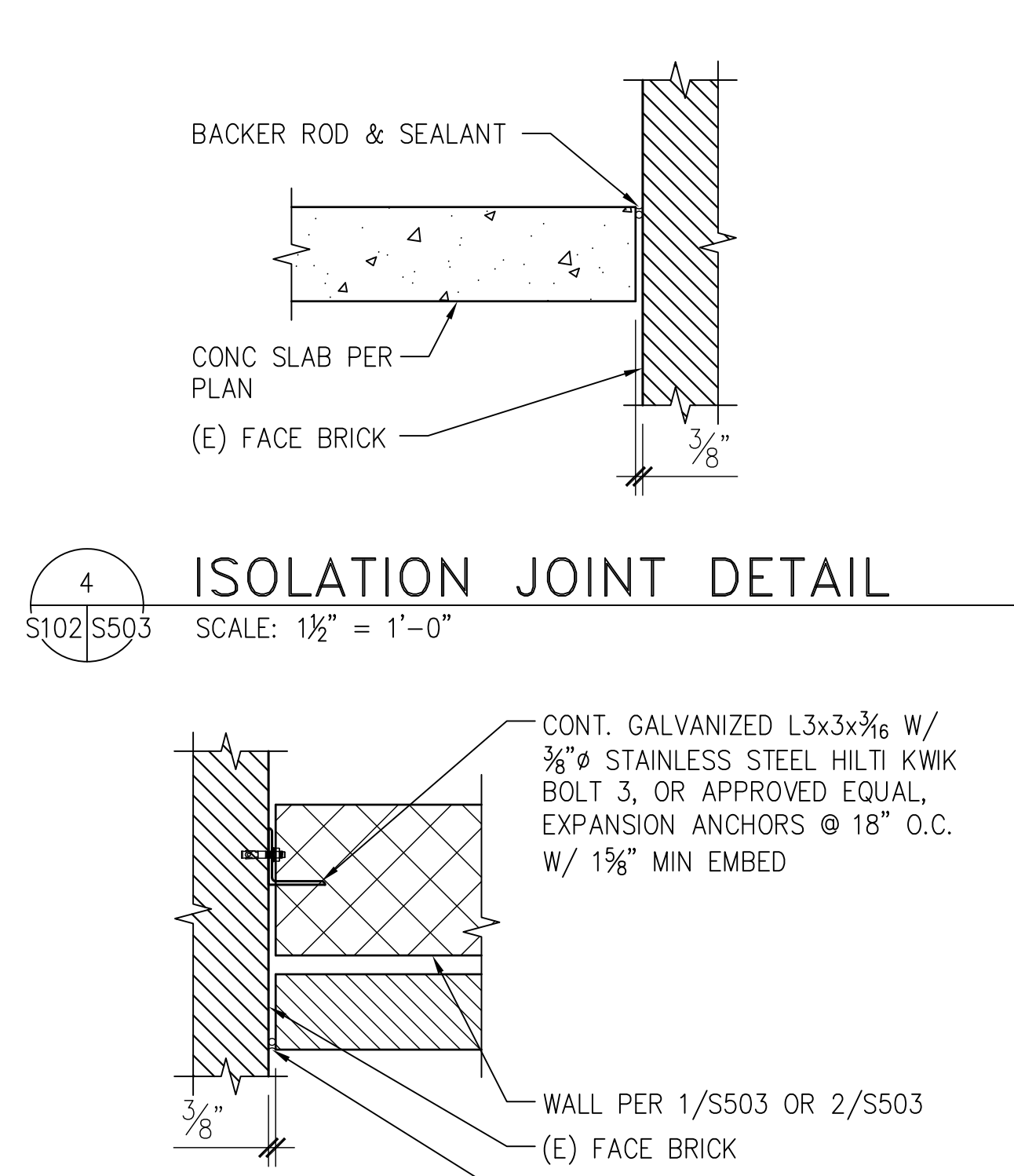
1 PORCH WALL SECTION
S101,S102,S503 SCALE: 3/4" = 1'-0"



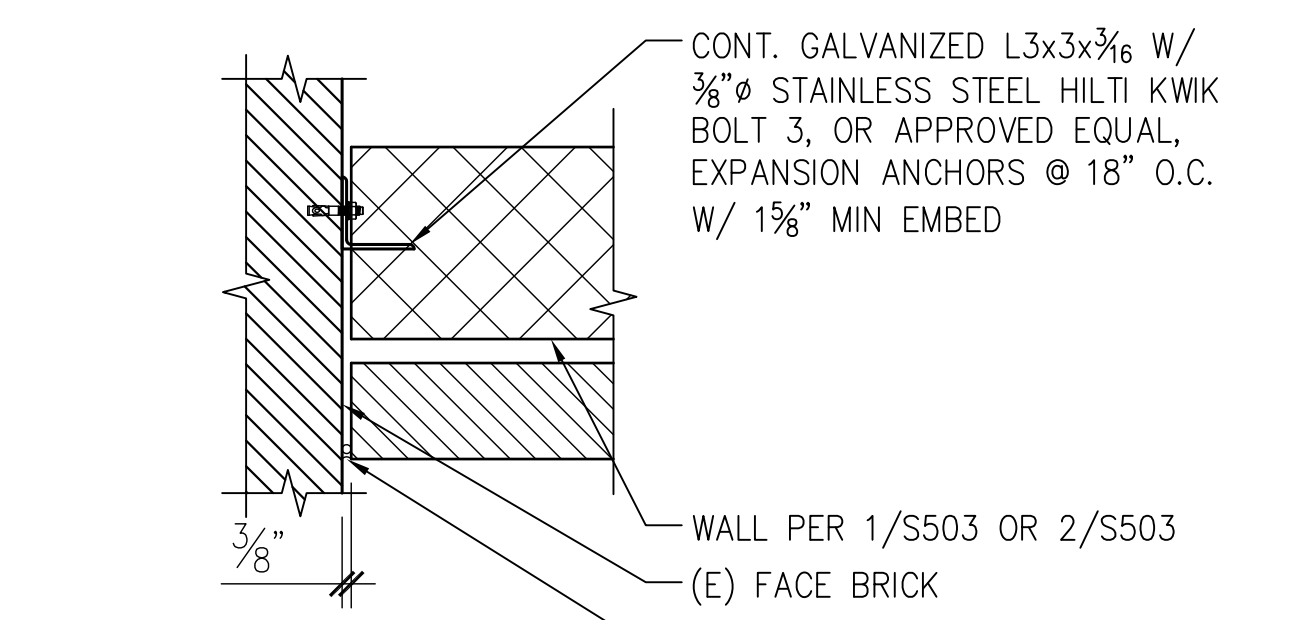
2 PORCH WALL SECTION
S101,S102,S503 SCALE: 3/4" = 1'-0"



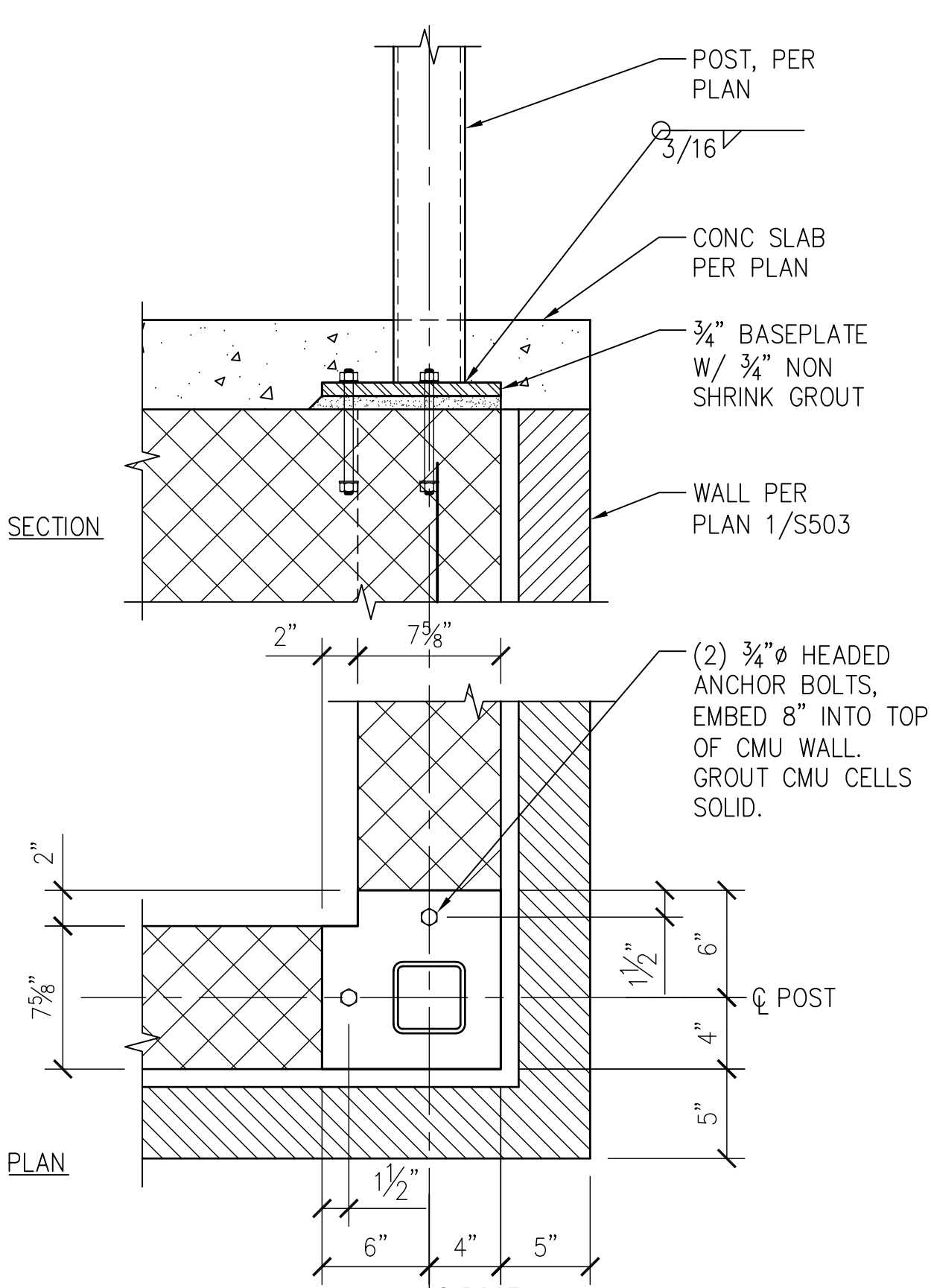
3 STAIR DETAIL
S101,S102,S503 SCALE: 3/4" = 1'-0"



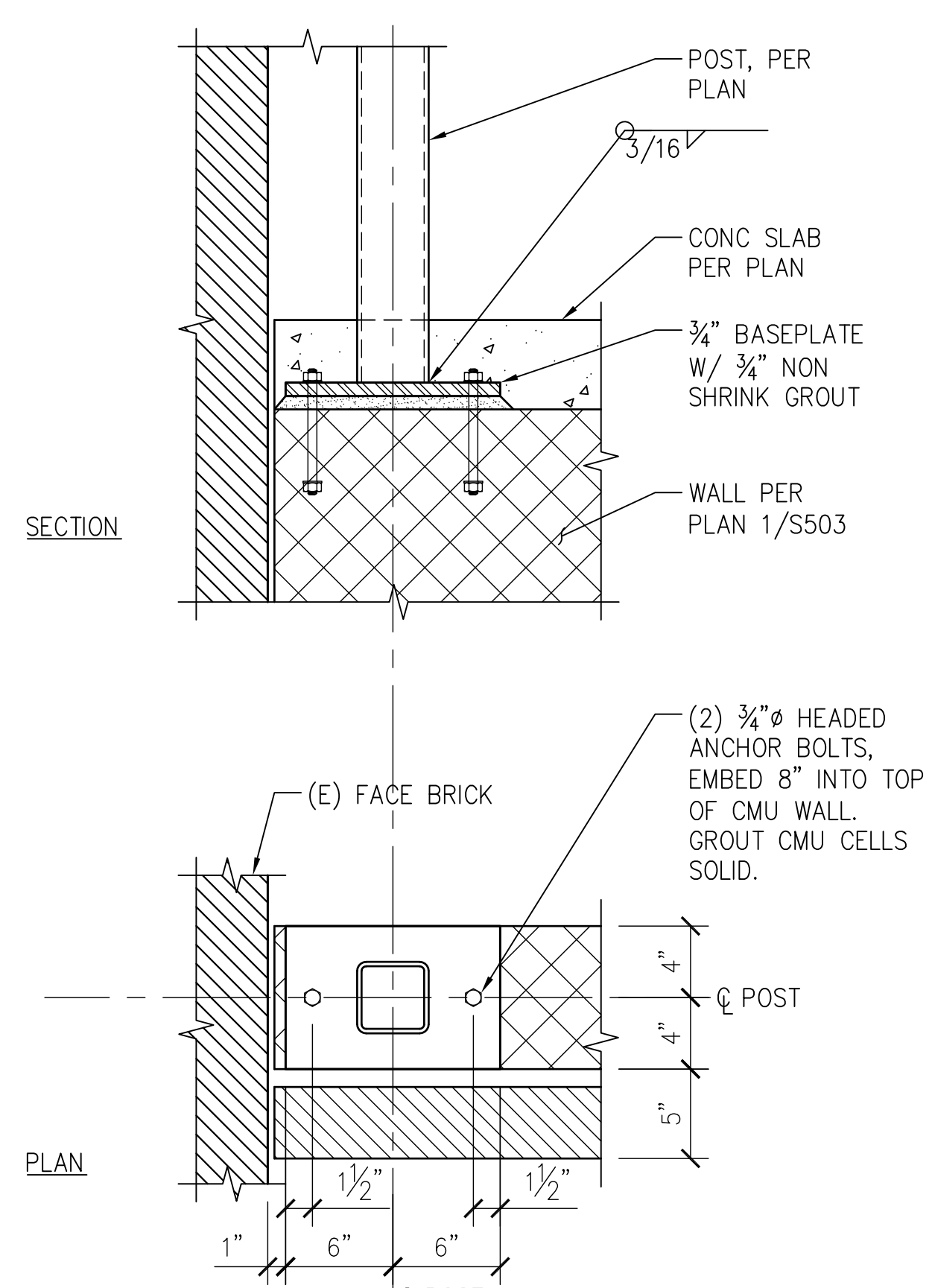
4 ISOLATION JOINT DETAIL
S102,S503 SCALE: 1/2" = 1'-0"



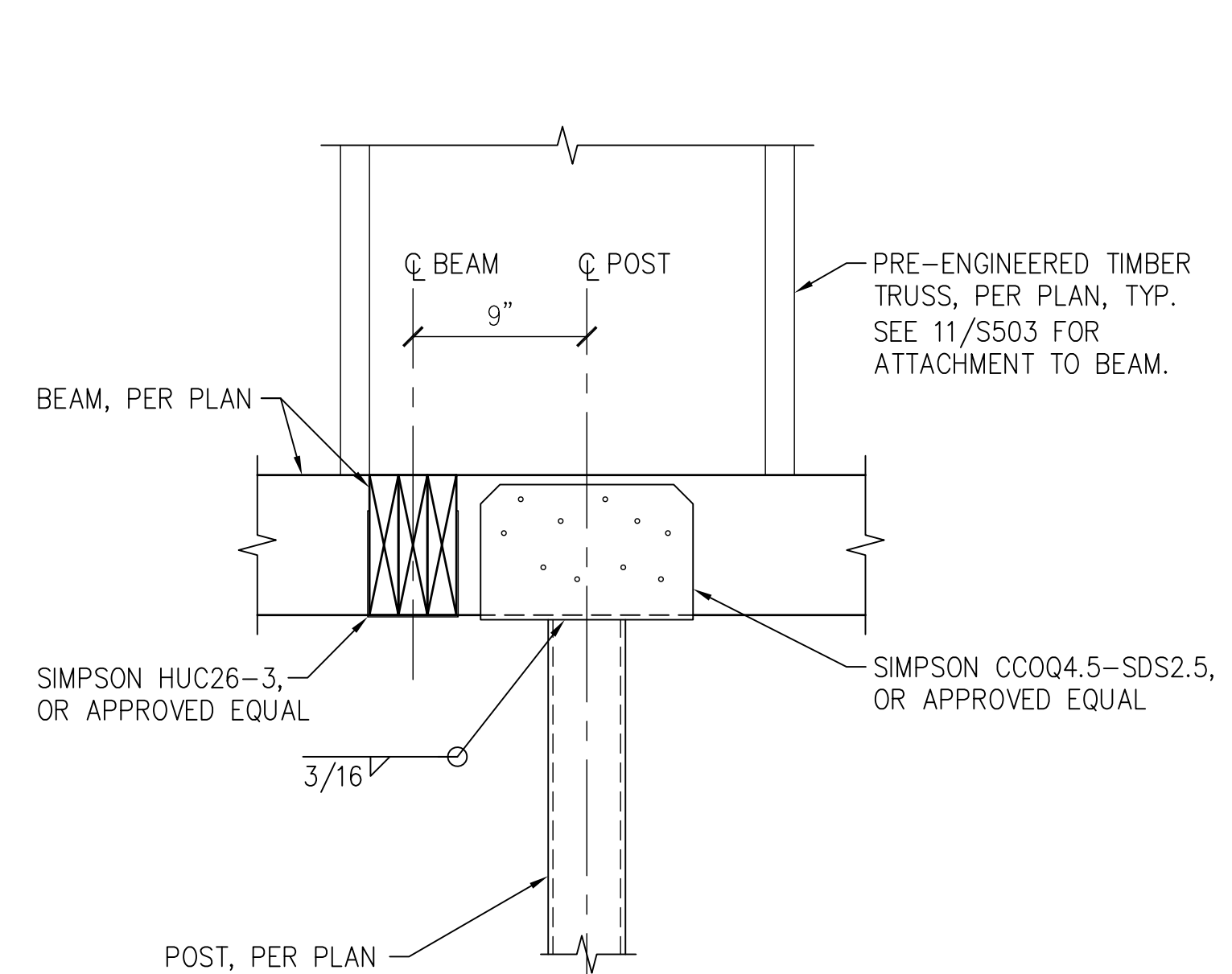
5 ISOLATION JOINT DETAIL
S101,S503 SCALE: 1/2" = 1'-0"



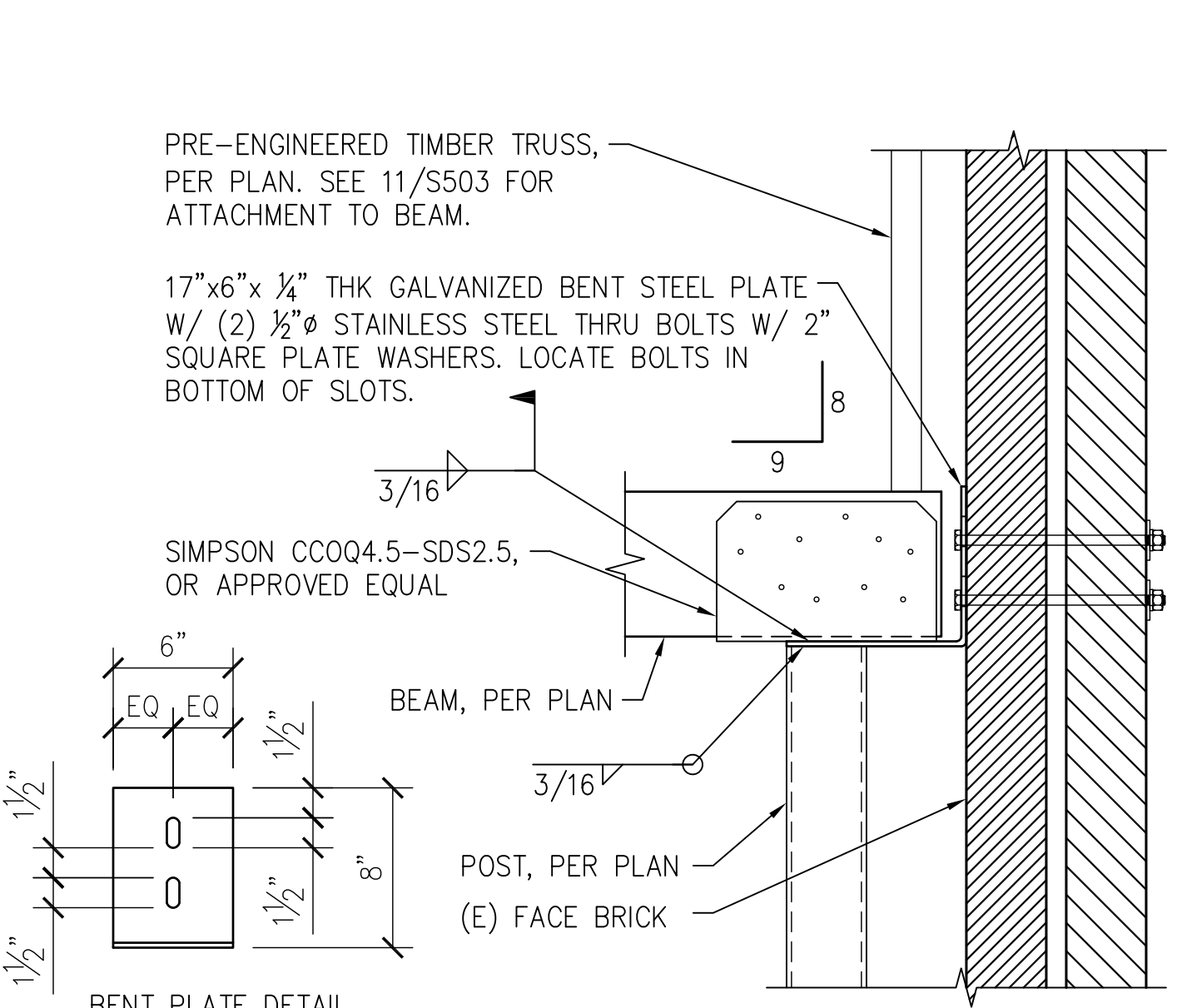
6 POST BASE DETAIL
S102,S503 SCALE: 1/2" = 1'-0"



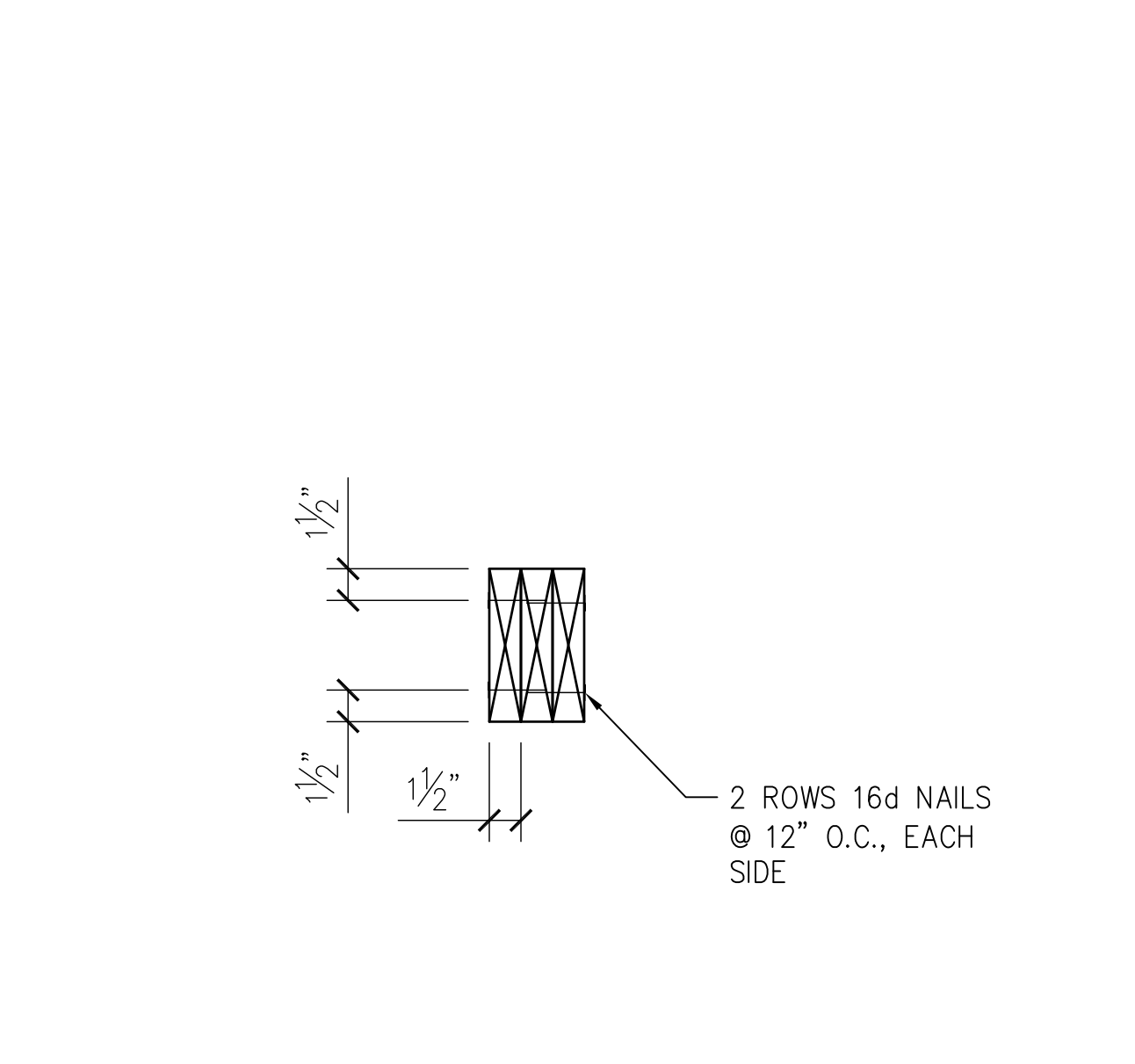
7 POST BASE DETAIL
S102,S503 SCALE: 1/2" = 1'-0"



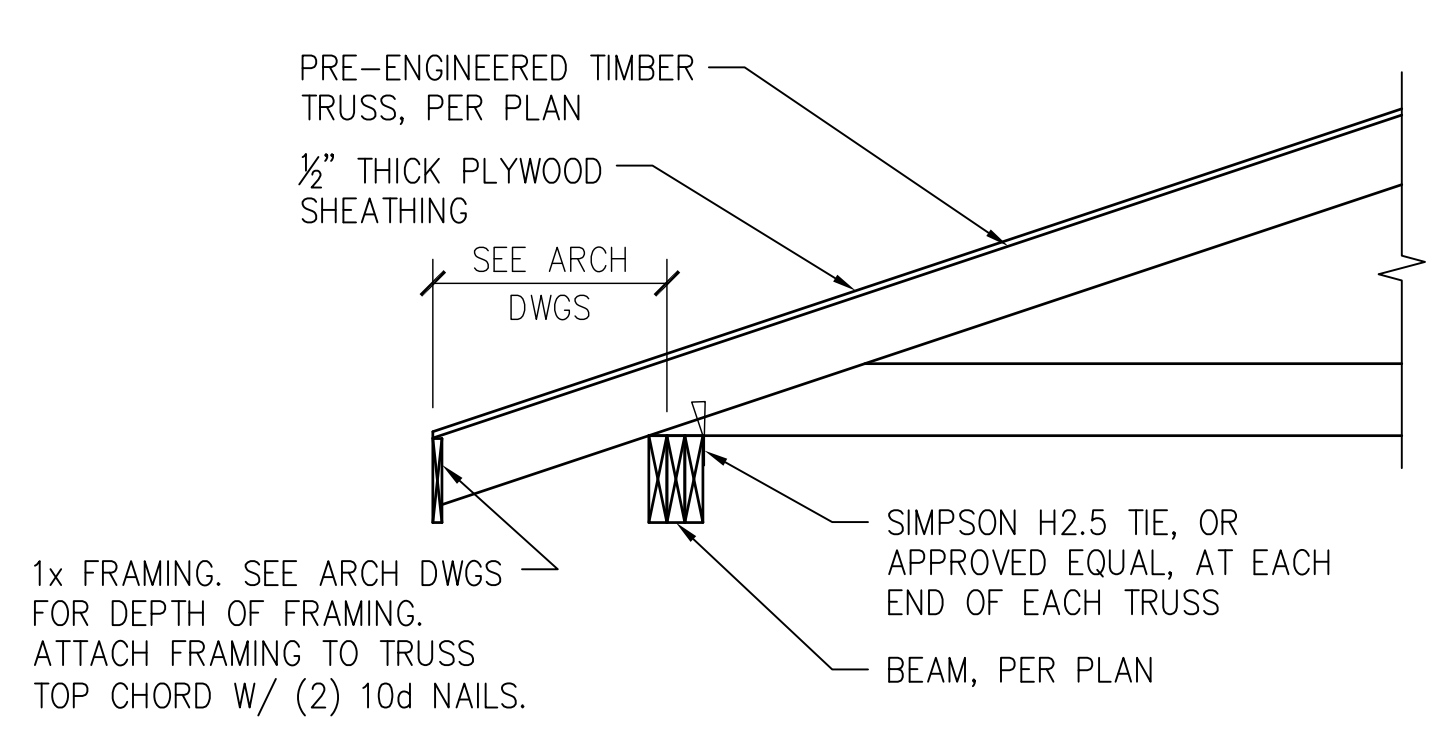
8 PORCH BEAM CONNECTION DETAIL
S103,S503 SCALE: 1/2" = 1'-0"



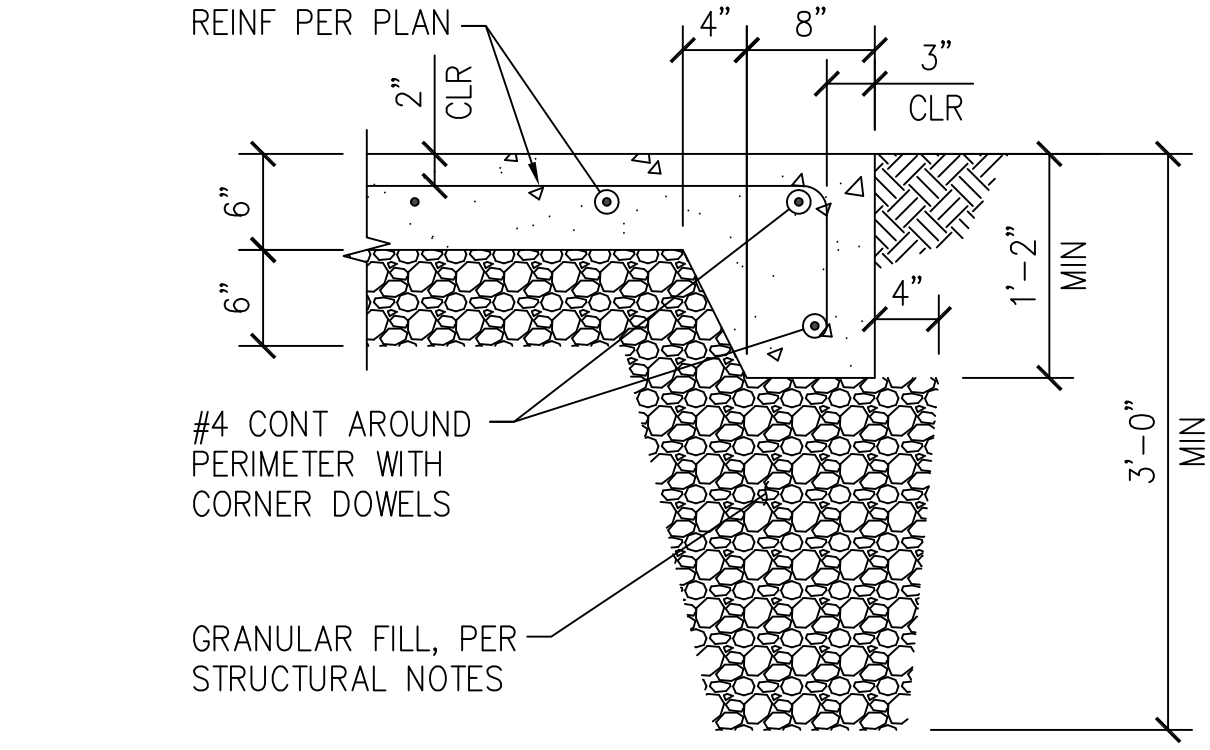
9 PORCH BEAM CONNECTION DETAIL
S103,S503 SCALE: 1/2" = 1'-0"



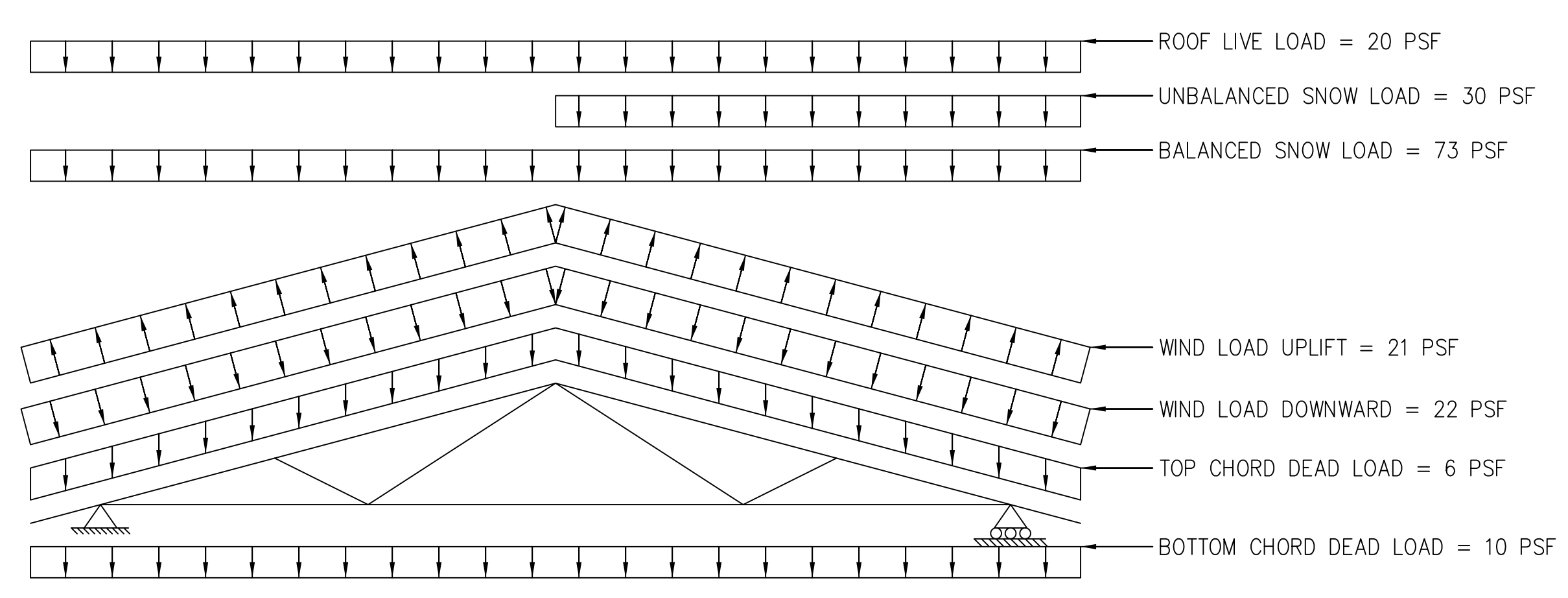
10 TIMBER BEAM SECTION
S103,S503 NOT TO SCALE



11 CONNECTION DETAIL
S103,S503 SCALE: 3/4" = 1'-0"

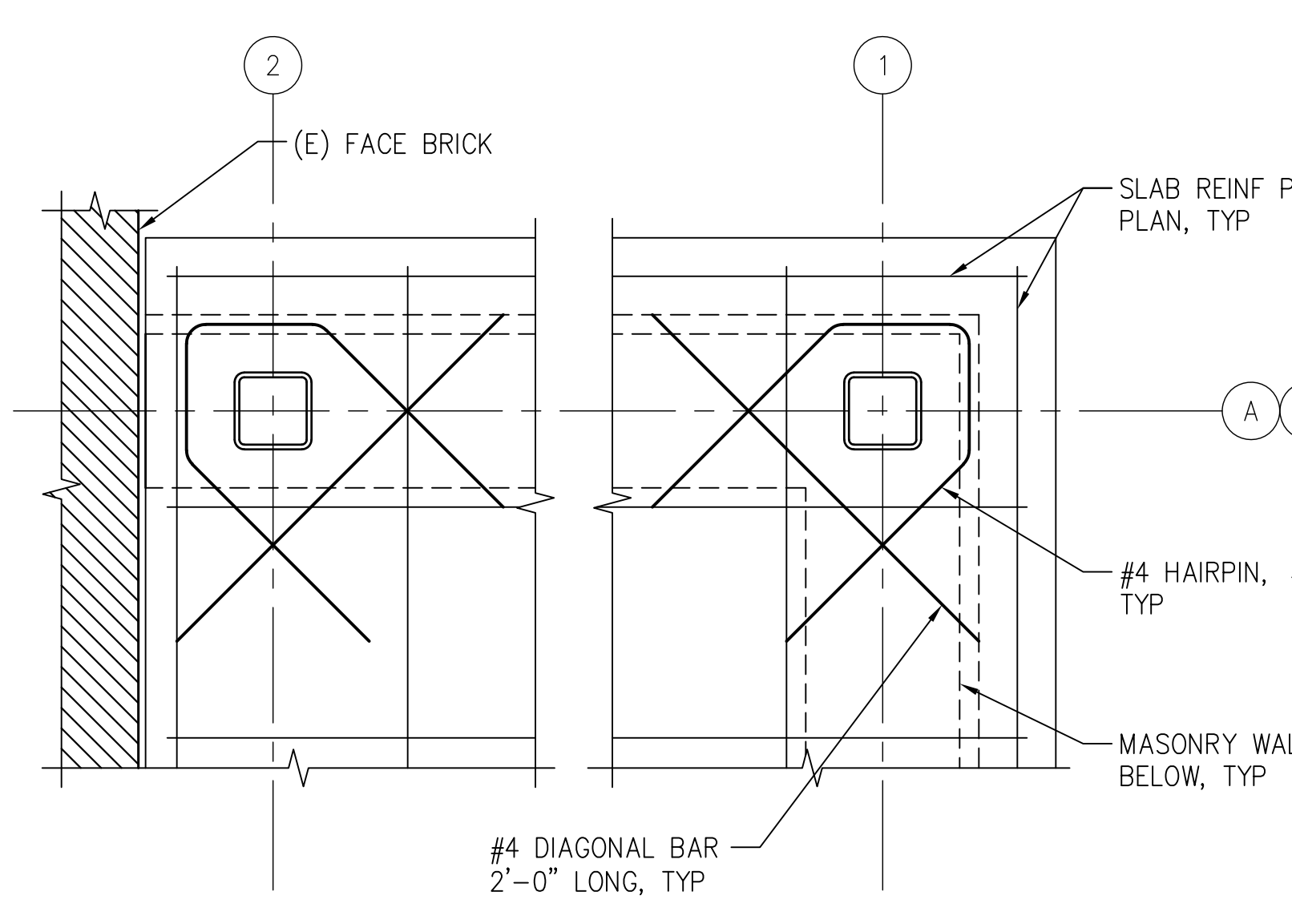


12 SECTION
S102,S503 SCALE: 1" = 1'-0"



NOTES:
1. BALANCED SNOW LOAD INCLUDES AN ALLOWANCE FOR DRIFTING SNOW.
2. BALANCED SNOW LOAD AND UNBALANCED SNOW LOAD DO NOT ACT CONCURRENTLY.
3. SEE ARCHITECTURAL DRAWINGS FOR DIMENSIONS.
4. SEE STRUCTURAL NOTES FOR INFORMATION NOT SHOWN.

13 TIMBER TRUSS LAYOUT AND LOADING DIAGRAM
S503,S503 NOT TO SCALE



14 SLAB HAIRPIN DETAIL
S102,S503 SCALE: 1/2" = 1'-0"

Note: All Wood to be Fire-Rated

ARCHITECT / ENGINEERS:



2 Wisconsin Circle; Suite 820
Chevy Chase, MD 20815-7003
301.718.0080
www.okksstudios.com

HENRY ADAMS
Consulting Engineers

Mechanical Electrical & Plumbing Engineers

Henry Adams, LLC
Consulting Engineers
600 Baltimore Avenue
Baltimore, MD 21204
Tel: (410)296-6500
Fax: (410)296-3156

Woods Peacock Engineering
Consultants
5250 Cherokee Avenue, Suite 420
Alexandria, VA 22312-2052
Tel: (703) 658-4400
Fax: (703) 658-4404

Revisions by the VA	Date
100% Construction Documents Submission	05/31/13
95% Construction Documents Submission	05/10/13
60% Design Development Submission	03/28/13
Revisions:	Date

Stamp/Seal	Drawing Title PORCH SECTIONS AND DETAILS	Project Title BUILDING 405B RENOVATIONS	VA Project Number 613-13-115	Office of Construction and Facilities Management
Approved: Project Director	Location MARTINSBURG, WV	Date 05/31/2013	Building Number 405B	
		Checked TMP	Drawn CAD	Department of Veterans Affairs
			S503	