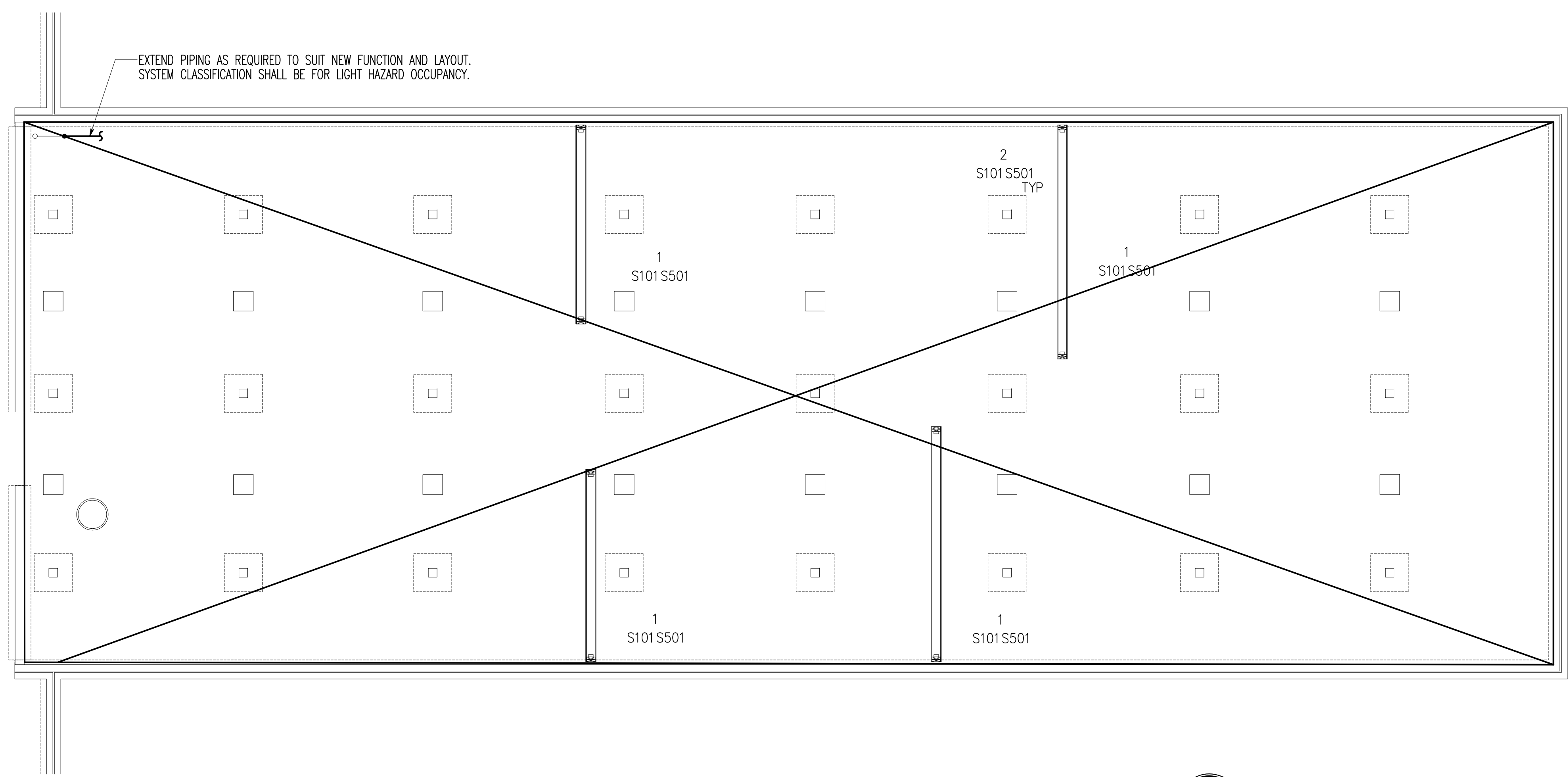
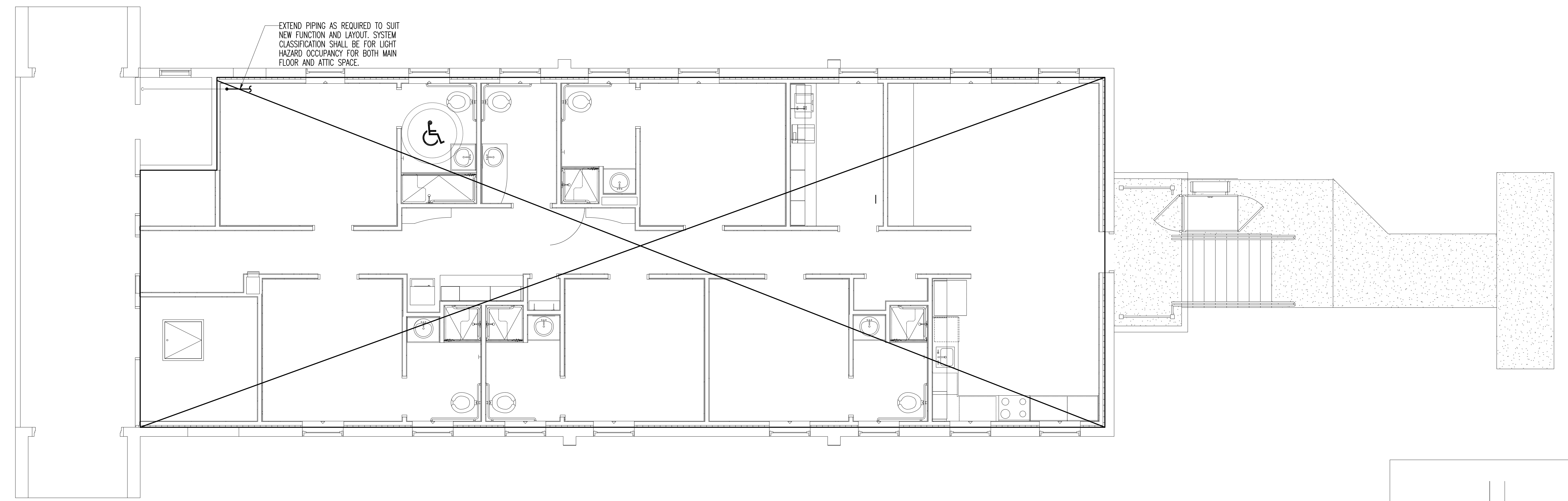


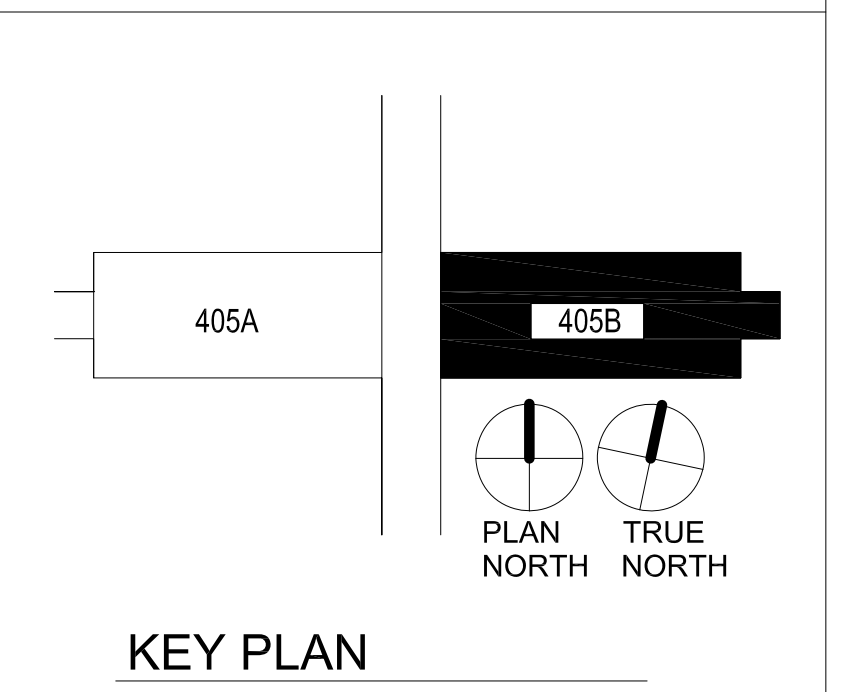
DRAWING NOTES: (APPLICABLE TO THIS DRAWING ONLY)
 1. EXISTING SHOWN WITH LIGHT WEIGHT LINE.
 2. NEW WORK SHOWN WITH HEAVY WEIGHT LINE.



1 CRAWL SPACE PLAN - FIRE PROTECTION NEW WORK
 SCALE: 1/4" = 1'-0"



2 FIRST FLOOR & ATTIC PLAN - FIRE PROTECTION NEW WORK
 SCALE: 1/4" = 1'-0"



1/4" = 1' - 0"

Revisions:	Date
Revisions by the VA	09/19/2019
100% Construction Documents Submission	05/31/13
95% Construction Documents Submission	05/10/13
60% Design Development Submission	03/28/13

ARCHITECT / ENGINEERS:
Oudens Knoop Knoop + Sachs Architects
 2 Wisconsin Circle / Suite 820
 Chevy Chase, MD 20815-7003
 Tel: (301) 718-0080
 Fax: (301) 718-9520

HENRY ADAMS
 Consulting Engineers
 Mechanical Electrical & Plumbing Engineers

Henry Adams, LLC
 Consulting Engineers
 600 Baltimore Avenue
 Baltimore, MD 21204
 Tel: (410)296-6500
 Fax: (410)296-3156

Woods Peacock Engineering Consultants
 5250 Cherokee Avenue, Suite 420
 Alexandria, VA 22312-2052
 Tel: (703) 658-4400
 Fax: (703) 658-4404

Stamp/Seal

Drawing Title
FIRE PROTECTION - NEW WORK
 Approved: Project Director

Project Title
BUILDING 405B RENOVATION
 Location
MARTINSBURG, WV
 Date
 05/31/2013
 Checked
 MTM
 Drawn
 ADL

VA Project Number
613-13-115
 Building Number
405B
 Drawing Number
FP102

Office of Construction and Facilities Management
 Department of Veterans Affairs