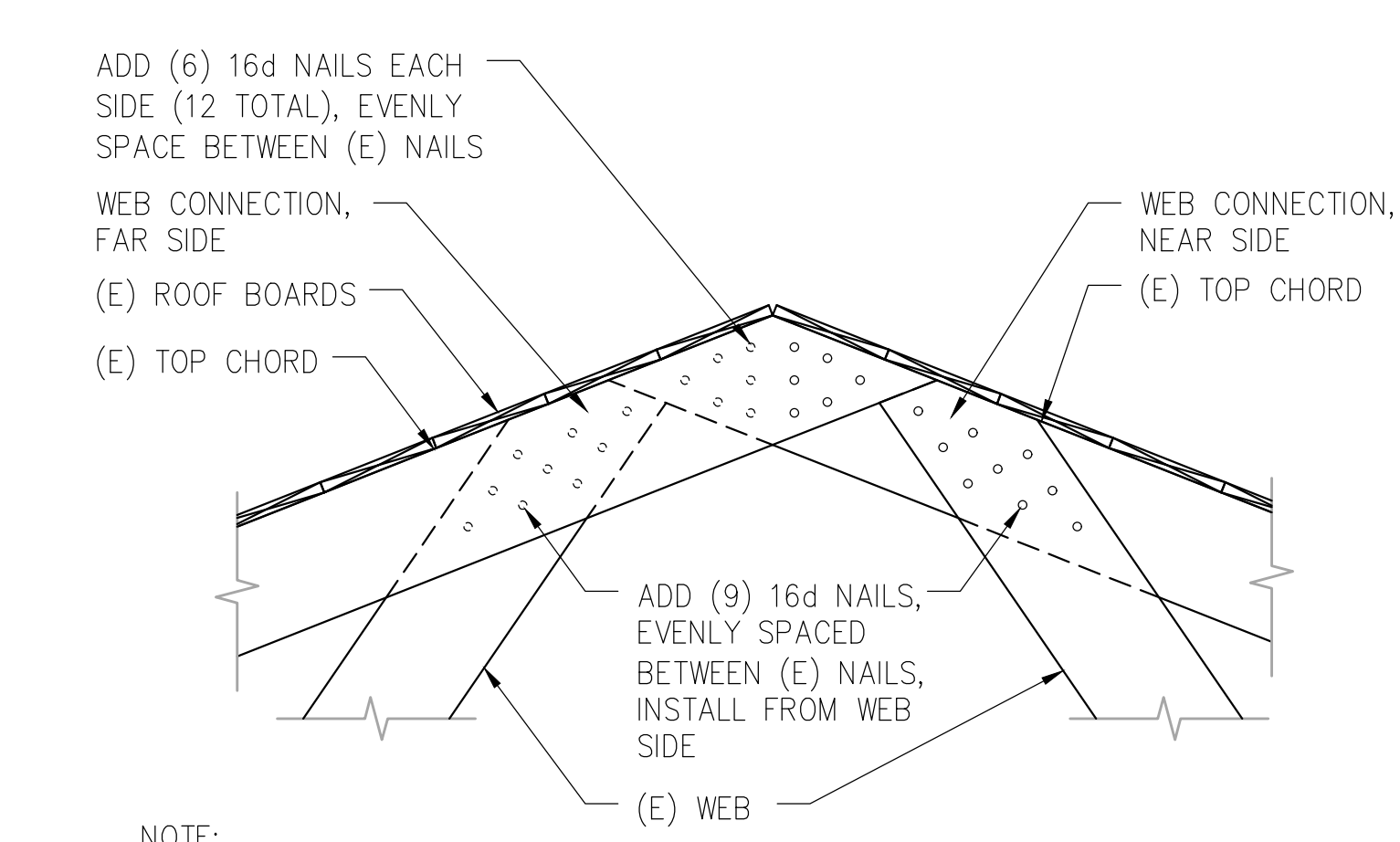
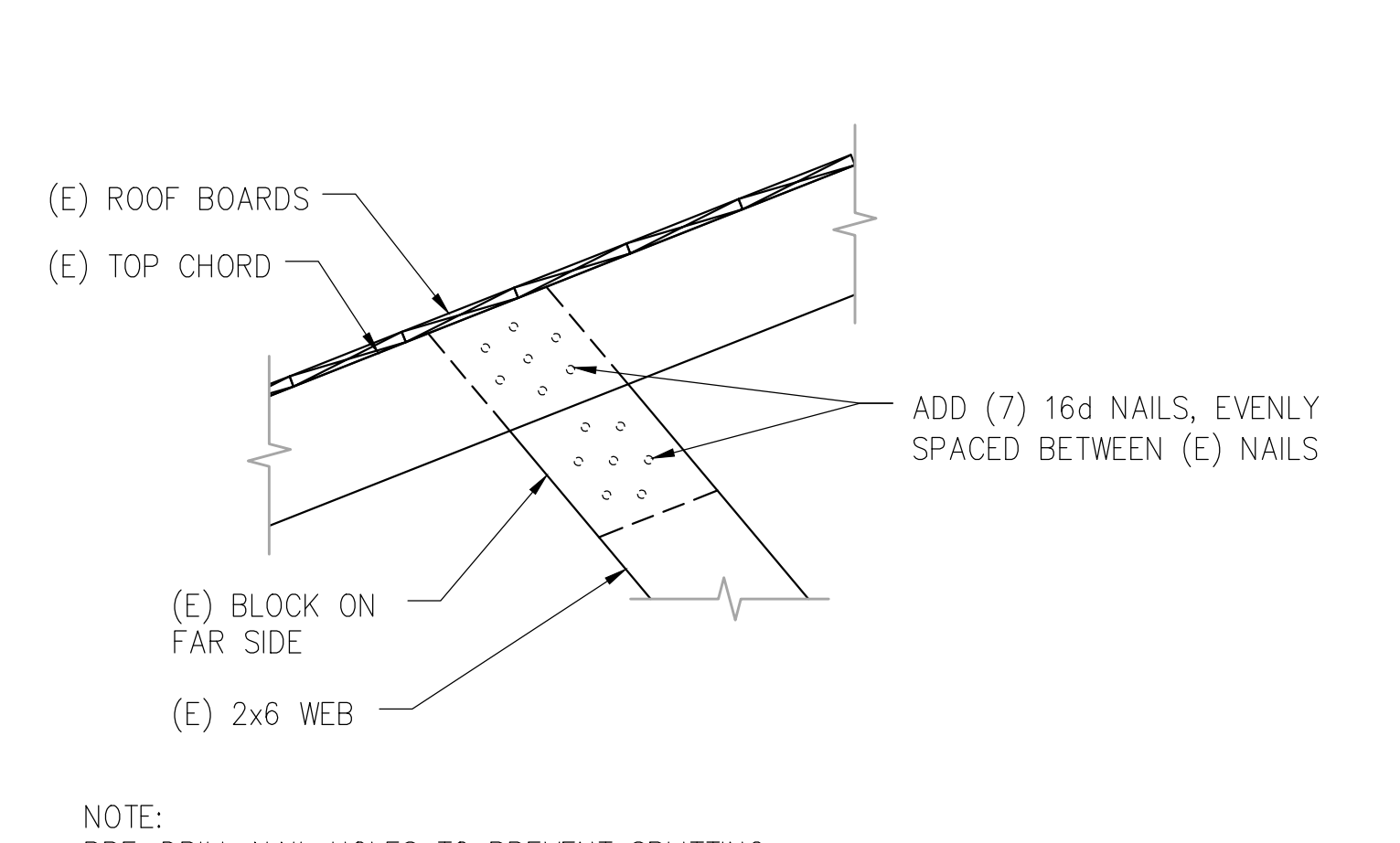


- NOTES:
1. VERIFY THAT THERE ARE (5) (E) NAILS AT EACH MEMBER-TO-MEMBER CONNECTION. WHERE THERE ARE FEWER THAN (5) NAILS, INSTALL AN ADDITIONAL NAIL FOR EACH "MISSING" NAIL. BASIS OF BID IS (6) BROKEN OR CRACKED 3/8"x5" WEB MEMBERS, (1) CRACKED 2"x6" TRUSS WEB MEMBER AND (1) CRACKED TRUSS TOP CHORD MEMBER. ALL BROKEN OR CRACKED WEB MEMBERS SHALL BE REPLACED WITH 2x6 FRAMING.
 2. TRUSS REPAIRS MAY BE REQUIRED WHEN INSTALLING DUCTWORK, SPRINKLERS, LIGHTING, FIRE ALARM SYSTEM COMPONENTS, PLUMBING VENTS, SOLAR TUBE LIGHTS, ETC. CONTRACTOR SHALL REPAIR ALL TRUSSES TO MEET THE REQUIREMENTS OF THIS DETAIL.
 3. COLLAR TIES SHALL BE PLACED IN THE UPPER THIRD OF THE RAFTERS NEAR THE ROOF'S PEAK. COLLAR TIES SPACING SHOULD NO MORE THAN FOUR FEET APART OR ALTERNATING EVERY SECOND RAFTER.

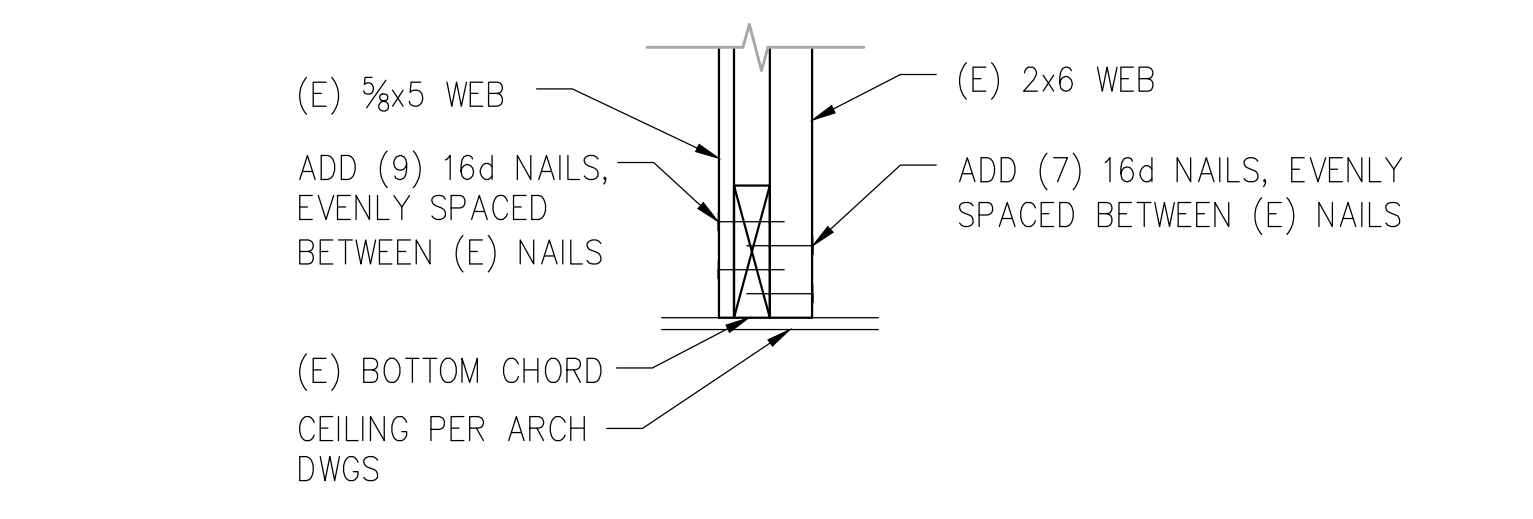
1 TYPICAL EXISTING ROOF TRUSS REPAIR DETAIL
S103/S502 SCALE: 1/2" = 1'-0"



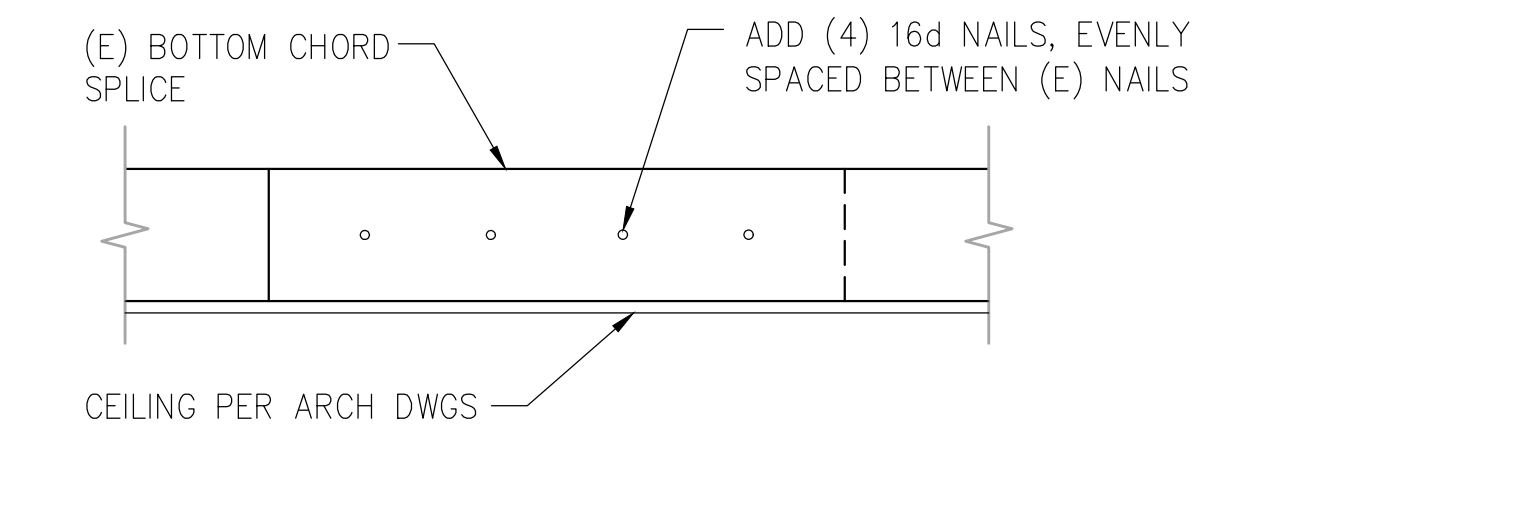
2 WEB CONNECTION AT PEAK
S502/S502 SCALE: 1/2" = 1'-0"



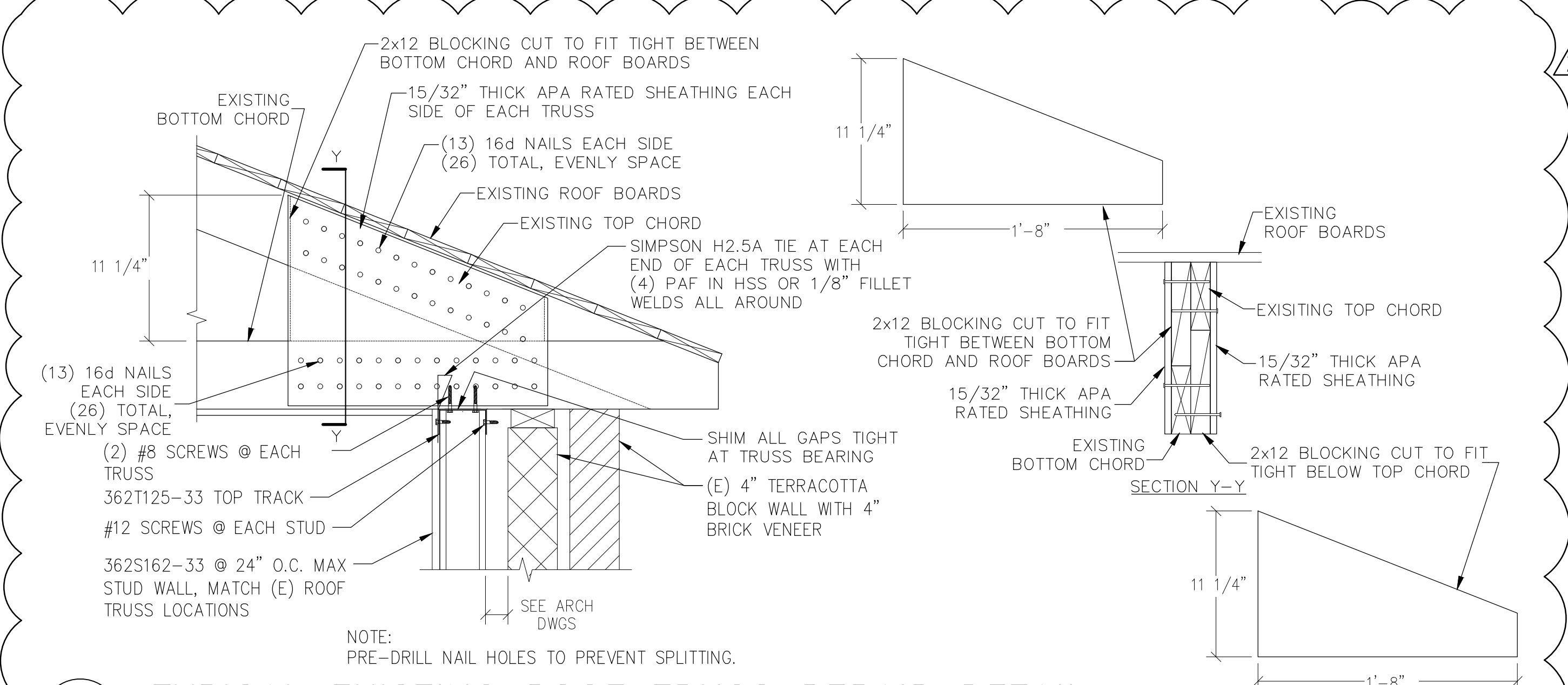
3 WEB CONNECTION AT TOP CHORD
S502/S502 SCALE: 1/2" = 1'-0"



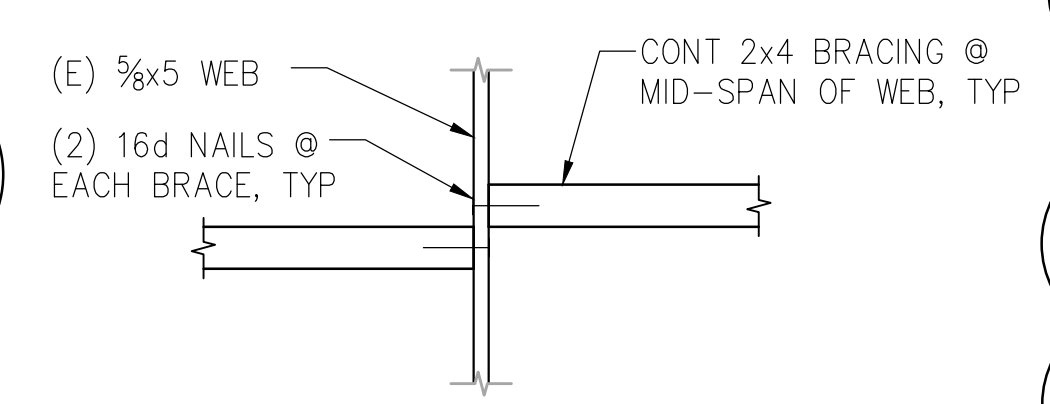
4 WEB CONNECTION AT BOTTOM CHORD
S502/S502 SCALE: 1/2" = 1'-0"



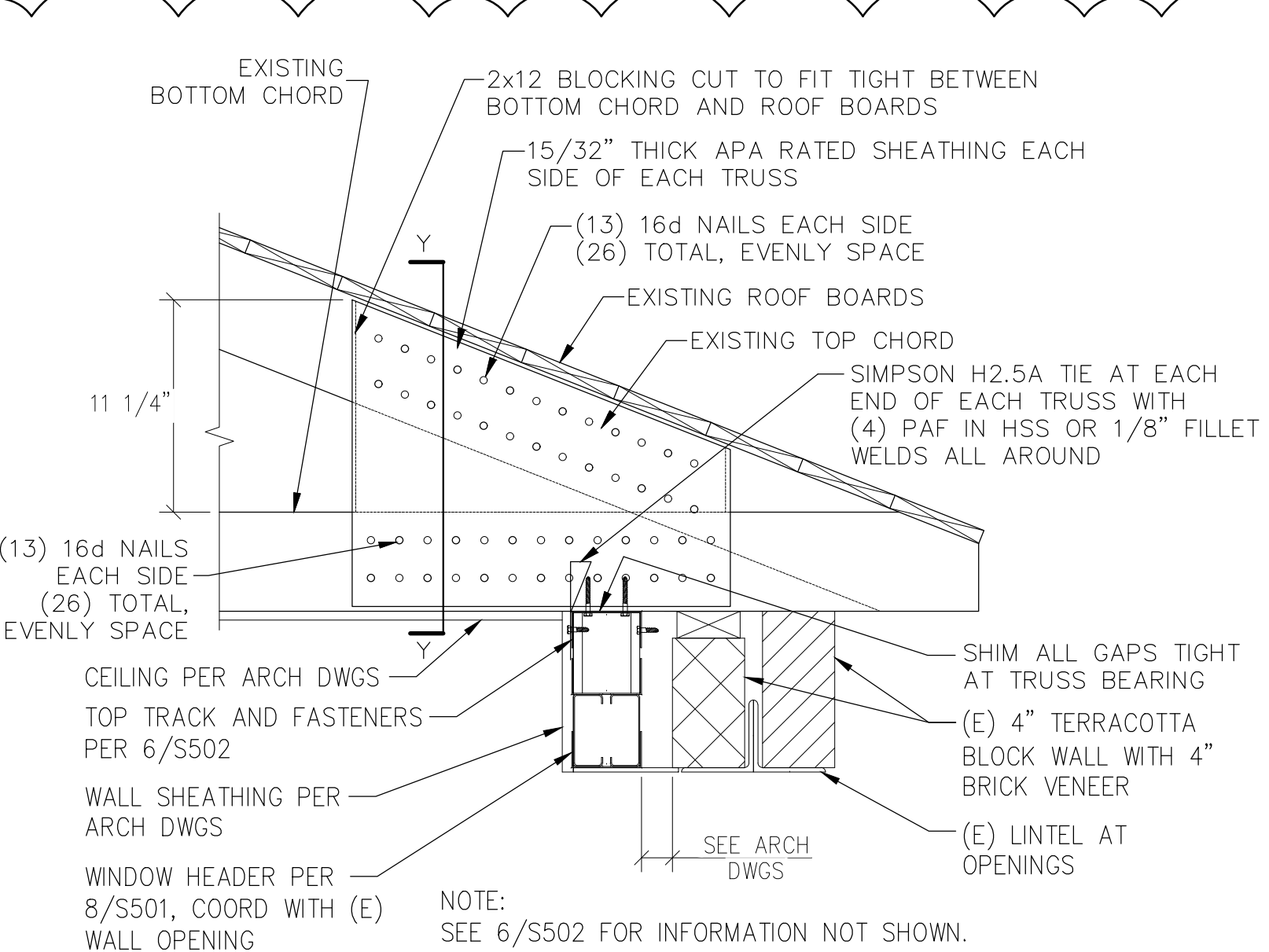
5 BOTTOM CHORD SPLICE
S502/S502 SCALE: 1/2" = 1'-0"



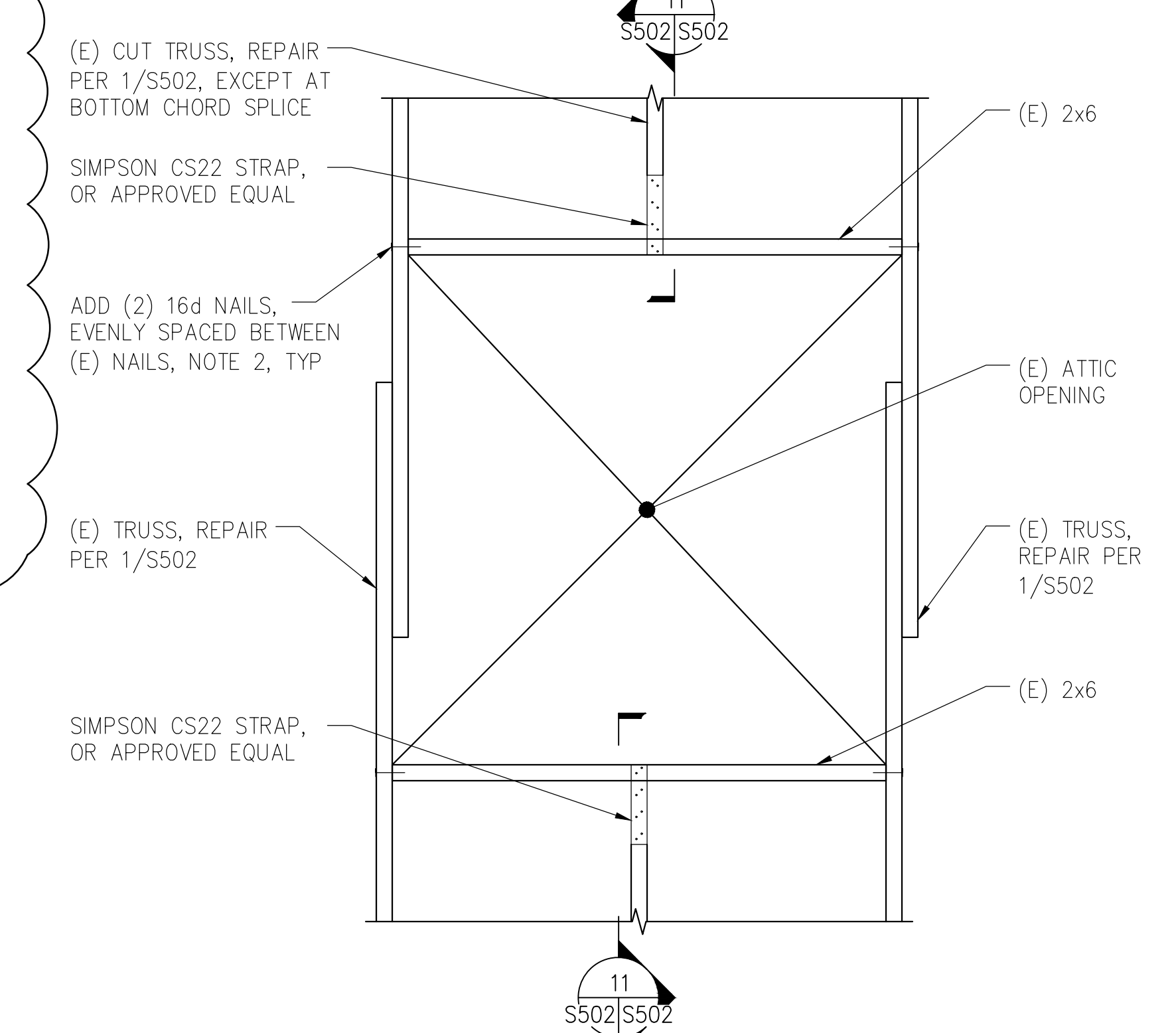
6 TYPICAL EXISTING ROOF TRUSS REPAIR DETAIL
S103/S502 SCALE: 1/2" = 1'-0"



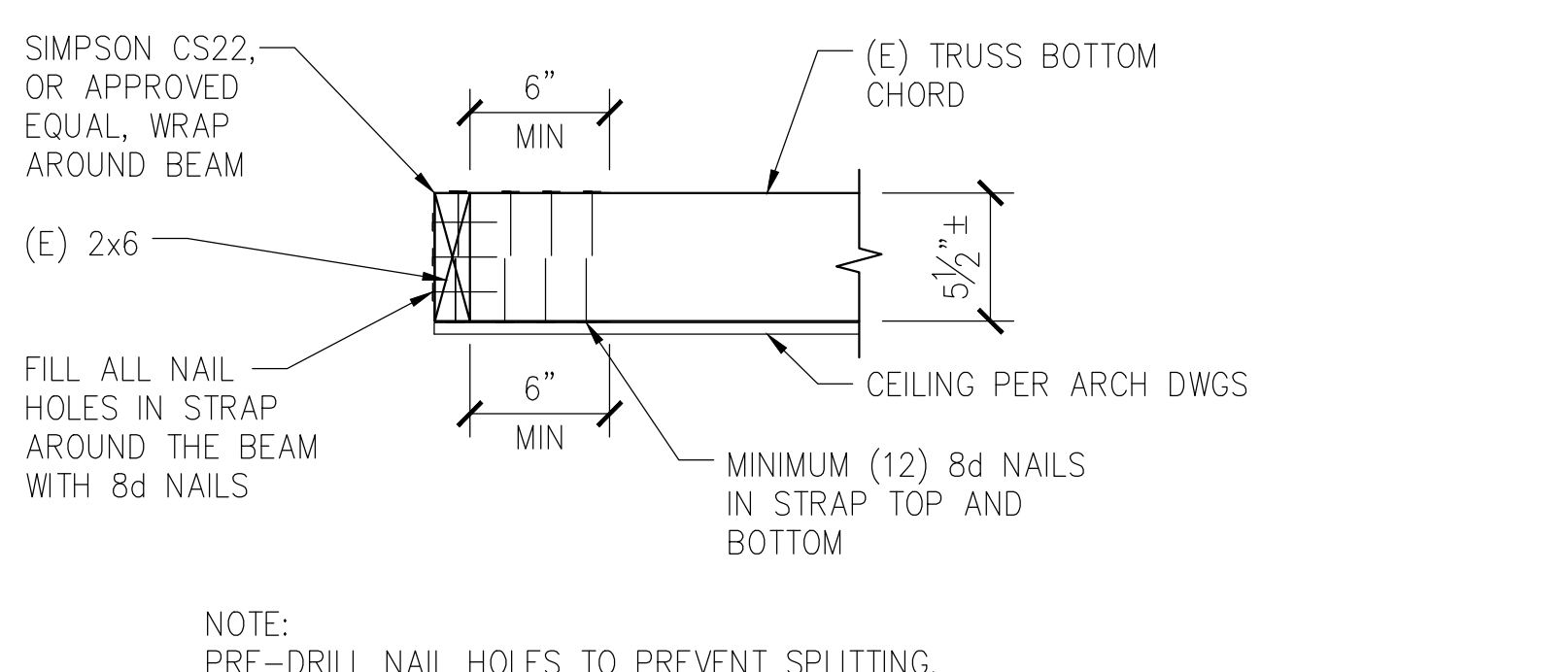
7 (E) WEB MEMBER BRACING
S502/S502 SCALE: 1/2" = 1'-0"



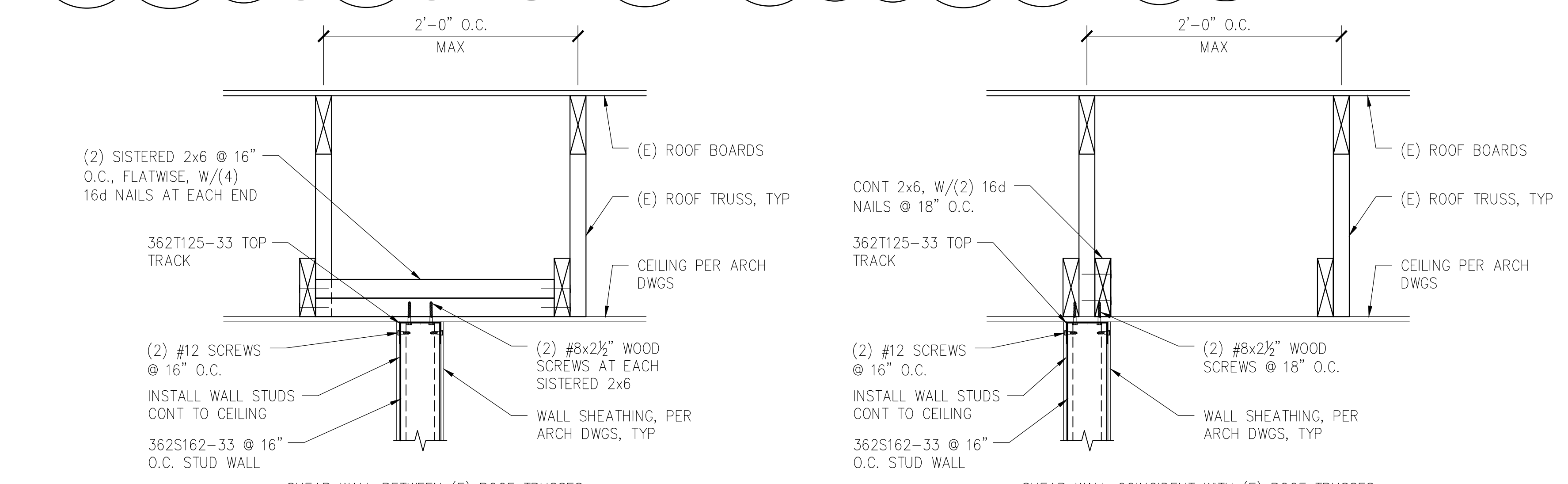
9 TRUSS BEARING AT WALL OPENING
S103/S502 SCALE: 1/2" = 1'-0"



10 EXISTING ATTIC OPENING
S103/S502 NOT TO SCALE



11 TRUSS CHORD TO BEAM CONNECTION
S502/S502 SCALE: 1/2" = 1'-0"



8 SHEAR WALL AT CEILING
S103/S502 SCALE: 1/2" = 1'-0"

Note: All Wood to be Fire-Rated

Rev.	Description	CAD Date
2	Revisions by the VA	CJZ 08/07/23
1	Revisions by the VA	09/19/19
	100% Construction Documents Submission	05/31/13
	95% Construction Documents Submission	05/10/13
	60% Design Development Submission	03/28/13

ARCHITECT / ENGINEERS:
2 Wisconsin Circle; Suite 820
Chevy Chase, MD 20815-7003
301.718.0080
www.oksstudios.com

HENRY ADAMS
Consulting Engineers
Mechanical Electrical & Plumbing Engineers

Henry Adams, LLC
Consulting Engineers
600 Baltimore Avenue
Baltimore, MD 21204
Tel: (410)296-6500
Fax: (410)296-3156

Woods Peacock Engineering
Consultants
5250 Cherokee Avenue, Suite 420
Alexandria, VA 22312-2052
Tel: (703) 658-4400
Fax: (703) 658-4404

Stamp/Seal
Drawing Title
SECTIONS AND DETAILS
Approved: Project Director

Project Title
BUILDING 405B RENOVATIONS
Location
MARTINSBURG, WV
Date
05/31/2013
Checked
TMP
Drawn
CAD

VA Project Number
613-13-115
Building Number
405B
Drawing Number
S502

Office of
Construction
and Facilities
Management
Department of
Veterans Affairs