

VA



**U.S. Department of Veterans Affairs**

---

Veterans Health Administration  
*Lebanon VA Medical Center*

# PARKING LOT SEALANT AND JOINT REPAIR

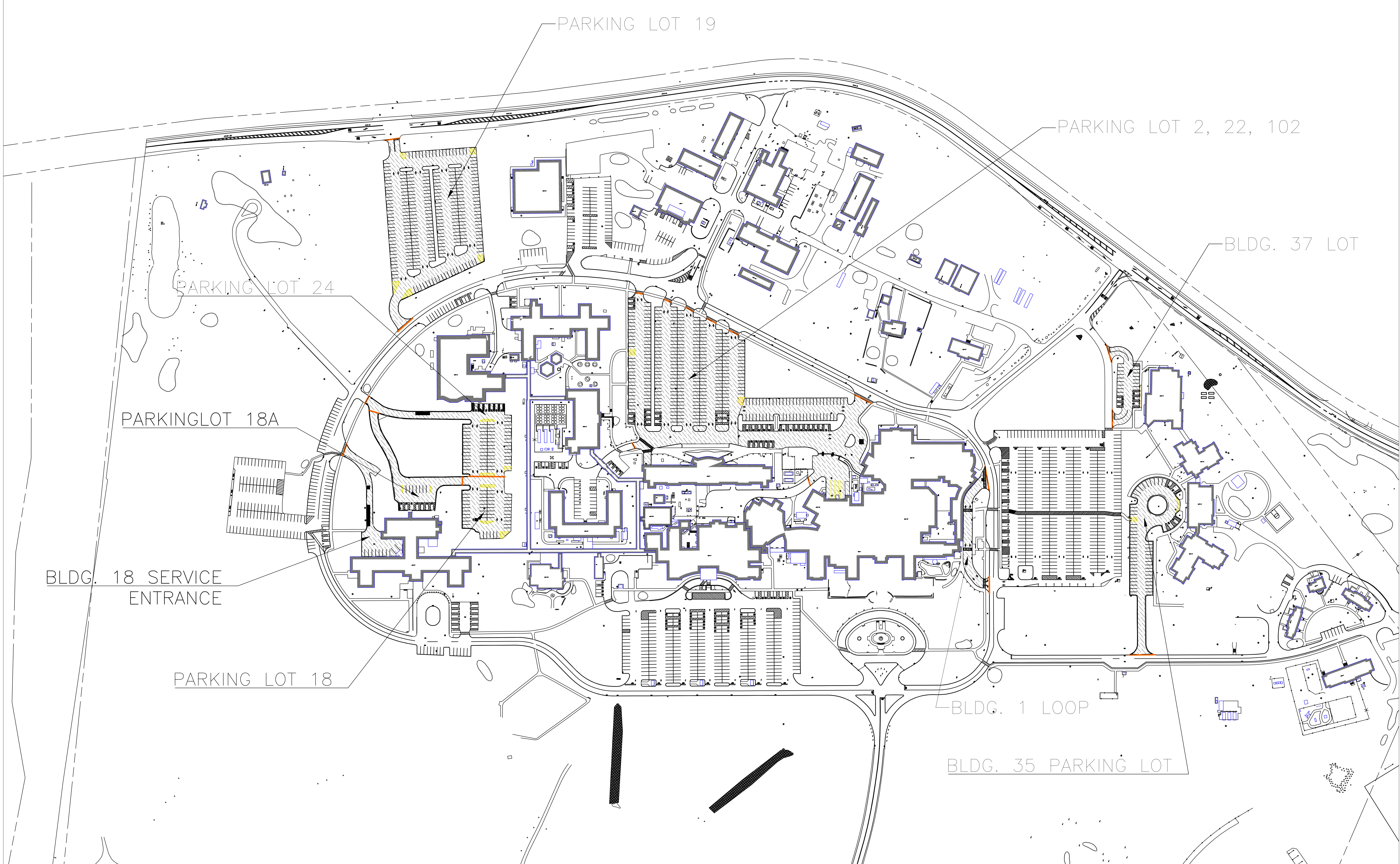
## PROJECT NUMBER: 595-23-108

DRAWING INDEX				
SHEET NO.	DWG NO.			SHEET TITLE
GI-001	1	OF	13	TITLE SHEET
GI-002	2	OF	13	CAMPUS MAP
GI-003	3	OF	13	PHASE MAP
CS101	4	OF	13	LOT 2, 22, 102
CS102	5	OF	13	LOT 18
CS103	6	OF	13	LOT 18A
CS104	7	OF	13	BLDG. 18 SERVICE ENTRANCE
CS105	8	OF	13	LOT 19
CS106	9	OF	13	LOT 24
CS107	10	OF	13	BLDG. 1 LOOP
CS108	11	OF	13	BLDG. 35 LOT
CS109	12	OF	13	BLDG. 37 LOT
CS110	13	OF	13	CONSTRUCTION DETAILS

**NOTES**

1. THE VA SHALL NOT HAVE CONTROL OR CHARGE OF AND SHALL NOT BE RESPONSIBLE FOR CONSTRUCTION MEANS, METHODS, TECHNIQUES, SEQUENCE, ON PROCEDURE, OR FOR SAFETY PRECAUTIONS AND PROGRAMS IN CONNECTION WITH THE WORK, ALL OF WHICH SHALL BE THE SOLE RESPONSIBILITY OF THE CONTRACTOR.
2. CONTRACTOR'S ACTIVITIES SHALL NOT CONFLICT WITH THE VA OPERATIONS AND EMPLOYEE/PATIENT PARKING. THE CONTRACTOR SHALL COORDINATE WITH THE CONTRACTING OFFICER REPRESENTATIVE (COR).
3. THE CONTRACTOR SHALL NOTIFY "DIG-SAFE" (1-888-314-7233) AT LEAST 72 HOURS PRIOR TO EXCAVATION.
4. THE CONTRACTOR SHALL BE RESPONSIBLE FOR SITE SECURITY AND JOB SAFETY. CONSTRUCTION ACTIVITIES SHALL BE IN ACCORDANCE WITH OSHA STANDARDS, STATE AND LOCAL REQUIREMENTS. THE CONTRACTOR SHALL PROVIDE FENCING OR BARRIERS WHEN CONSTRUCTION IS BEING PERFORMED ADJACENT TO BUILDING ENTRANCES/WALKWAYS.
5. UPON AWARD OF CONTRACT, THE CONTRACTOR SHALL MAKE NECESSARY CONSTRUCTION NOTIFICATIONS, APPLY FOR AND OBTAIN NECESSARY PERMITS, PAY FEES, AND POST BONDS ASSOCIATED WITH THE WORK INDICATED WITHIN THE CONSTRUCTION PLANS, SPECIFICATIONS AND CONTRACT DOCUMENTS. THE CONTRACTOR SHALL NOT COMMENCE CONSTRUCTION NOR CLOSE OR OBSTRUCT ROADWAYS, SIDEWALKS AND/OR FIRE HYDRANTS WITHOUT APPROPRIATE PERMITS AND/OR PERMISSIONS.
6. TRAFFIC SIGNAGE (TEMPORARY AND PERMANENT) SHALL CONFORM TO THE MANUAL OF UNIFORM TRAFFIC CONTROL DEVICES FOR ALL LOCAL RIGHTS OF WAY AND BE IN ACCORDANCE WITH TRAFFIC MANAGEMENT PLANS.
7. ALL WASTE, DEBRIS, UNSUITABLE, AND EXCESS MATERIAL SHALL BE REMOVED FROM THE SITE AND LAWFULLY DISPOSED OF.
8. THE CONTRACTOR SHALL PROVIDE FENCING OR BARRIERS AROUND ALL ACTIVE CONSTRUCTION AREAS.
9. ANY EXCAVATED AREA LEFT OPEN AT THE END OF THE WORK DAY, THE CONTRACTOR SHALL BE COVERED OR PROTECTED BY A 4' HIGH FENCE.
10. CONTRACTOR SHALL MAINTAIN RECORD DOCUMENTS OF CONSTRUCTION CHANGES ("AS-BUILT DRAWINGS") AND SHALL PROVIDE SAID DOCUMENTATION TO THE VA UPON COMPLETION OF CONSTRUCTION IN BOTH DIGITAL AND HARD COPY FORMATS. RECORD DOCUMENTS SHALL ARTICULATE WHERE ACTUAL INSTALLATION OF WORK, PRODUCTS, AND/OR SYSTEMS VARY FROM THE DESIGN INTENT EXPRESSED/SPECIFIED IN THE CONTRACT DOCUMENTS. **"NO EXCEPTION ALLOWED"**
11. ANY WORK INSTALLED IN CONFLICT WITH THE CONTRACT DRAWINGS, CODE REQUIREMENTS OR MANUFACTURE REQUIREMENTS WITHOUT THE PRIOR APPROVAL OF THE VA SHALL BE CORRECTED AT THE CONTRACTOR'S EXPENSE.
12. AREAS OUTSIDE THE LIMITS OF PROPOSED WORK THAT BECOME DISTURBED BY THE CONTRACTOR'S OPERATIONS SHALL BE RESTORED BY THE CONTRACTOR TO ITS ORIGINAL CONDITION AT THE CONTRACTOR'S EXPENSE.
13. DAMAGE TO SURFACE FEATURES, SUBSURFACE FEATURES AND SUBSURFACE INFRASTRUCTURE RESULTING FROM CONSTRUCTION LOADS SHALL BE REPAIRED BY THE CONTRACTOR AT NO ADDITIONAL COST TO THE OWNER.
14. THE CONTRACTOR SHALL CONTROL STORMWATER RUNOFF DURING CONSTRUCTION TO PREVENT ADVERSE IMPACTS TO OFF-SITE AREAS, AND SHALL BE RESPONSIBLE TO REPAIR RESULTING DAMAGES, IF ANY, AT NO COST TO OWNER.
15. THE CONTRACTOR SHALL VERIFY THE PROPOSED LAYOUT WITH ITS RELATIONSHIP TO THE EXISTING SITE SURVEY. THE CONTRACTOR SHALL ALSO VERIFY ALL DIMENSIONS, SITE CONDITIONS, AND MATERIAL SPECIFICATIONS AND SHALL NOTIFY THE OWNER AND ENGINEER OF ANY DISCREPANCIES BEFORE COMMENCING OR PROCEEDING WITH WORK.
16. MATERIALS WHICH COULD BE A POTENTIAL SOURCE OF STORMWATER POLLUTION, SUCH AS GASOLINE, DIESEL FUEL, HYDRAULIC OIL, ETC., SHALL BE STORED AT THE END OF EACH DAY IN A STORAGE TRAILER OR COVERED LOCATION, OR TAKEN OFF-SITE AND PROPERLY DISPOSED OF. ALL TYPES OF WASTE GENERATED AT THIS SITE SHALL BE DISPOSED OF IN A MANNER CONSISTENT WITH STATE LAW AND/OR REGULATIONS.
17. THE CONTRACTOR SHALL NOTIFY OPERATORS WHO MAINTAIN UNDERGROUND UTILITY LINES IN THE AREA OF PROPOSED EXCAVATION AT LEAST TWO WORKING DAYS, BUT NOT MORE THAN TEN WORKING DAYS, PRIOR TO COMMENCEMENT OF EXCAVATION OR DEMOLITION. ALL WATER, GAS, SEWER, ELECTRIC AND OTHER UTILITIES SHALL BE MAINTAINED AT ALL TIMES DURING CONSTRUCTION.
18. THE CONTRACTOR SHALL BE RESPONSIBLE FOR REPLACING, WITH MATCHING MATERIALS, ANY PAVEMENT, WALKS, CURBS, ETC. THAT MUST BE CUT OR THAT ARE DAMAGED DURING CONSTRUCTION.
19. AN APPROVED SET OF PLANS AND ALL APPLICABLE PERMITS MUST BE AVAILABLE AT THE CONSTRUCTION SITE.
20. THE CONTRACTOR AGREES THAT HE/SHE SHALL ASSUME SOLE AND COMPLETE RESPONSIBILITY FOR JOB SITE CONDITIONS DURING THE COURSE OF CONSTRUCTION OF THIS PROJECT, INCLUDING SAFETY OF ALL PERSONS AND PROPERTY. THAT THIS REQUIREMENT SHALL APPLY CONTINUOUSLY AND NOT BE LIMITED TO NORMAL WORKING HOURS; AND THAT THE CONTRACTOR SHALL DEFEND, INDEMNIFY AND HOLD THE OWNER AND THE ENGINEER HARMLESS FROM ANY AND ALL LIABILITY, REAL AND ALLEGED, IN CONNECTION WITH THE PERFORMANCE OF WORK ON THIS PROJECT, EXCEPTING LIABILITY ARISING FROM THE SOLE NEGLIGENCE OF THE OWNER OR THE ENGINEER. THE CONTRACTOR IS RESPONSIBLE FOR INSTALLING A PROTECTIVE BARRIER AROUND THE SITE PRIOR TO AND MAINTAINED DURING CONSTRUCTION.
21. ALL CONSTRUCTION SHALL BE IN ACCORDANCE WITH THE APPROVED PLANS AND SPECIFICATIONS ISSUED BY THE VA. ANY DEVIATIONS FROM THESE DOCUMENTS SHALL REQUIRE NOTIFICATION TO THE COR PRIOR TO THE COMMENCEMENT OF CONSTRUCTION OF ANY CHANGE. WITHOUT NOTIFICATION TO THE COR, THE CONTRACTOR WILL BE WORKING AT HIS/HER OWN RISK. ANY WORK INSTALLED IN CONFLICT WITH THE CONTRACT DRAWINGS, CODE REQUIREMENTS OR MANUFACTURER REQUIREMENTS WITHOUT THE PRIOR APPROVAL OF THE OWNER AND THE COR SHALL BE CORRECTED AT THE CONTRACTOR'S EXPENSE.

		CONSULTANT	ARCHITECT/ENGINEER OF RECORD	STAMP	Office of Construction and Facilities Management	Drawing Title <b>TITLE SHEET</b>		Project Title <b>PARKING LOT SEALANT AND JOINT REPAIR</b>	Project Number <b>595-23-108</b>		
Revisions:	Date:				<b>VA</b> U.S. Department of Veterans Affairs	Approved:		Location <b>LEBANON VA MEDICAL CENTER</b>	Drawing Number <b>GI-001</b>		
								Issue Date	Checked	Drawn <b>CFE</b>	Dwg. 1 OF 13



Revisions:	Date:

CONSULTANT

ARCHITECT/ENGINEER OF RECORD

STAMP

Office of  
Construction  
and Facilities  
Management



Drawing Title  
**CAMPUS MAP**

Approved:

Project Title  
**PARKING LOT SEALANT AND JOINT  
REPAIR**

Location  
**LEBANON VA MEDICAL CENTER**

Issue Date

Checked

Drawn  
CFF

Project Number  
595-23-108

Building Number

Drawing Number  
**GI-002**

Dwg. 2 OF 13

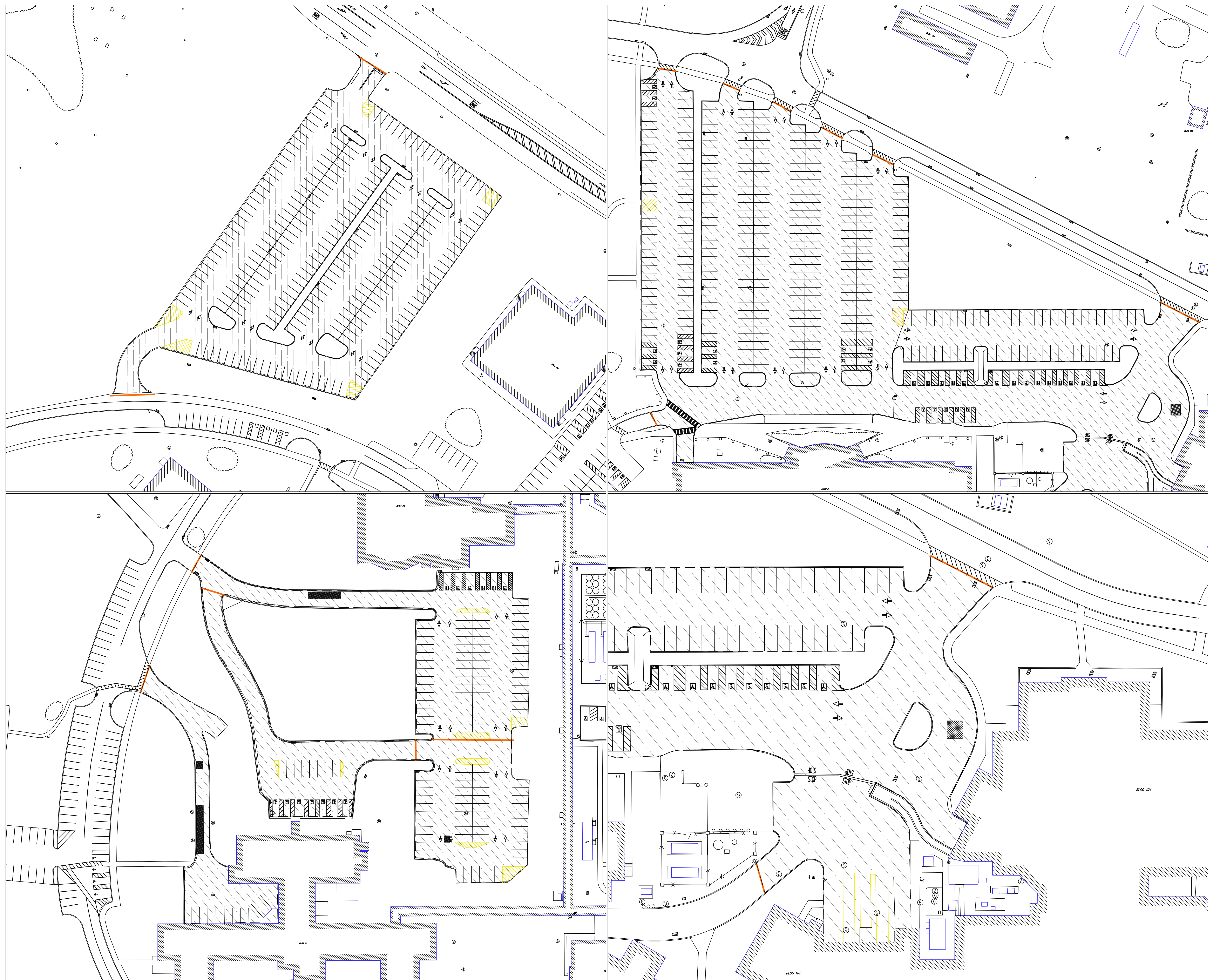
NOTES

1. Phases will be implemented to reduce the overall impact to VA patients and staff. All phasing will be based on how many square feet of work the contractor can complete in a given time period. Final decisions for phase size and location will be determined by the CO and COR.

Parking lots 2, 18, 18A, 19, 22, and 24 are all subject to phasing.

2. Parking Lot 102, Emergency Department must remain accessible at all times. Work in this area will be coordinated with the COR and the VA Safety Office to ensure no disruption to the Emergency Department. Contingency plans must me created and approved by the VA before any work begins in lot 102.

3. The contractor is responsible for barricading off the work area to prevent people and or vehicles from entering. Traffic cones, stanchions, barricades, caution tape or other suitable items will be used to restrict access.



A  
B  
C  
D  
E  
F

A  
B  
C  
D  
E  
F

Revisions:	Date:

CONSULTANT	ARCHITECT/ENGINEER OF RECORD	STAMP
------------	------------------------------	-------

Office of Construction and Facilities Management  
VA U.S. Department of Veterans Affairs

Drawing Title	PHASE SHEET
Approved:	

Project Title	PARKING LOT SEALANT AND JOINT REPAIR		
Project Number	595-23-108		
Building Number			
Location	LEBANON VA MEDICAL CENTER		
Issue Date	Checked	Drawn	Dwg. 3 OF 13
		CFF	

Drawing Number	GI-003
----------------	--------

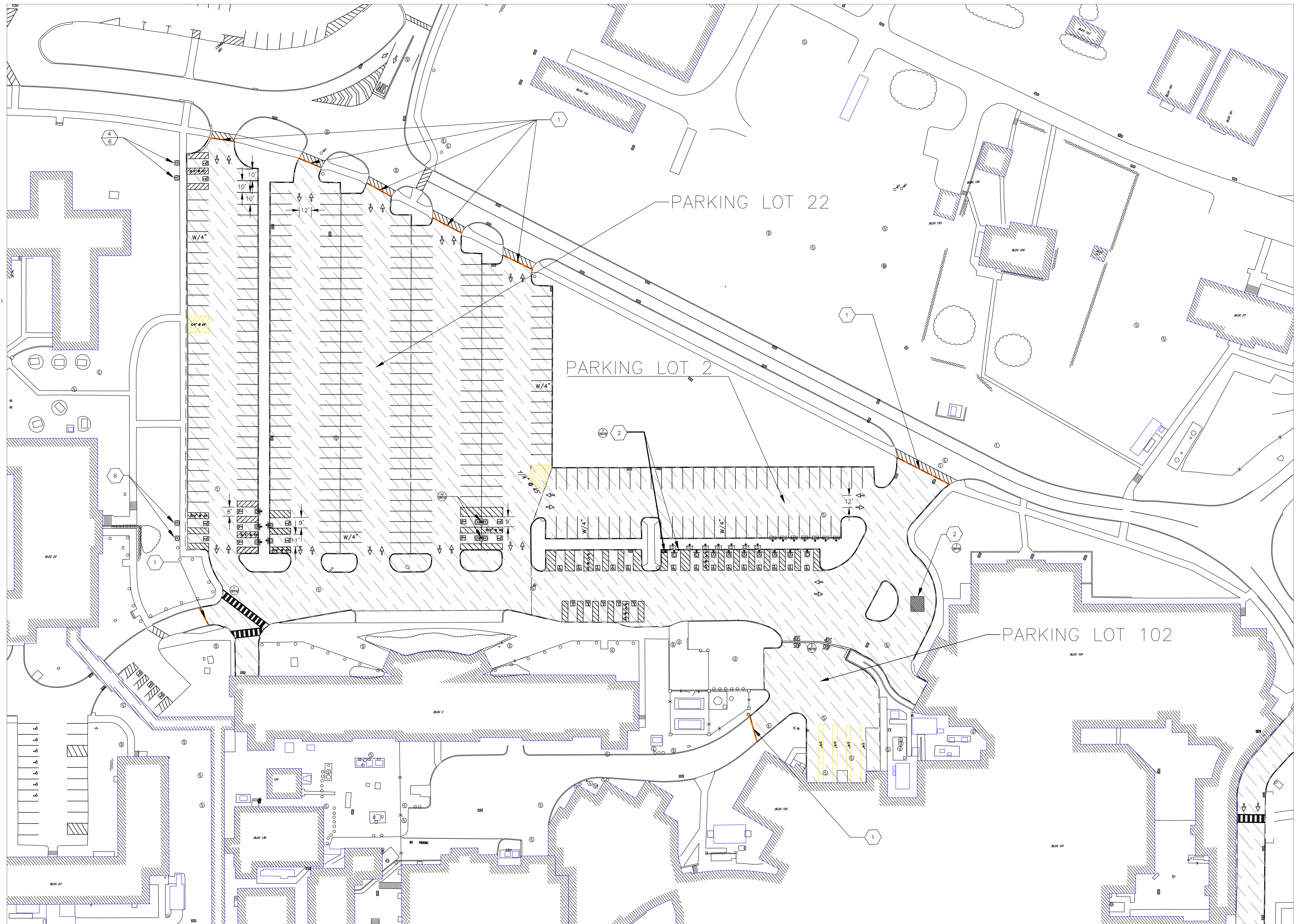
**PLAN KEYED NOTES:**

- ① DELINEATION LINE OF SEALANT
- ② POTHOLE REPAIR
- ③ FULL DEPTH REPAIR
- ④ RELOCATE EXISTING SIGN POST TO ALIGN WITH PAVEMENT MARKINGS
- ⑤ REPLACE EXISTING HANDICAP SIGN. WALL MOUNT TO ALIGN WITH PAVEMENT MARKINGS.
- ⑥ REPLACE EXISTING HANDICAP SIGN
- ⑦ EXISTING CONCRETE TO BE REMOVED AND REPLACED AT NEAREST JOINTS.
- ⑧ INSTALL 2'X5' DETECTABLE WARNING STRIP. ALIGN WITH PAVEMENT MARKINGS.

U-CHANNEL POST, 8'  
(PROVIDE AND INSTALL) REFER TO SIGN TABULATION CHART

SIGNAGE W/ LABEL  
(PROVIDE AND INSTALL) REFER TO DETAILS 8 & 9

NOTES  
1. Relocate seven (7) post and signs, "Emergency Department Parking only, Patient Parking Only" from ED1 to ED2.



A  
B  
C  
D  
E  
F

A  
B  
C  
D  
E  
F

Revisions:	Date:

CONSULTANT

ARCHITECT/ENGINEER OF RECORD

STAMP

Office of Construction and Facilities Management  
VA U.S. Department of Veterans Affairs

Drawing Title  
LOT 2, 22, & 102  
Approved:

Project Title  
PARKING LOT SEALANT AND JOINT REPAIR

Location  
LEBANON VA MEDICAL CENTER

Project Number  
595-23-108  
Building Number  
Drawing Number  
CS101  
Dwg. 4 OF 13

- PLAN KEYED NOTES:**
- ① DELINEATION LINE OF SEALANT
  - ② POT HOLE REPAIR
  - ③ FULL DEPTH REPAIR
  - ④ RELOCATE EXISTING SIGN POST TO ALIGN WITH PAVEMENT MARKINGS
  - ⑤ REPLACE EXISTING HANDICAP SIGN. WALL MOUNT TO ALIGN WITH PAVEMENT MARKINGS.
  - ⑥ REPLACE EXISTING HANDICAP SIGN
  - ⑦ EXISTING CONCRETE TO BE REMOVED AND REPLACED AT NEAREST JOINTS.
  - ⑧ INSTALL 2'x5' DETECTABLE WARNING STRIP. ALIGN WITH PAVEMENT MARKINGS.



PARKING LOT 18

154

Revisions:	Date:

CONSULTANT	ARCHITECT/ENGINEER OF RECORD	STAMP

Office of Construction and Facilities Management  
 U.S. Department of Veterans Affairs

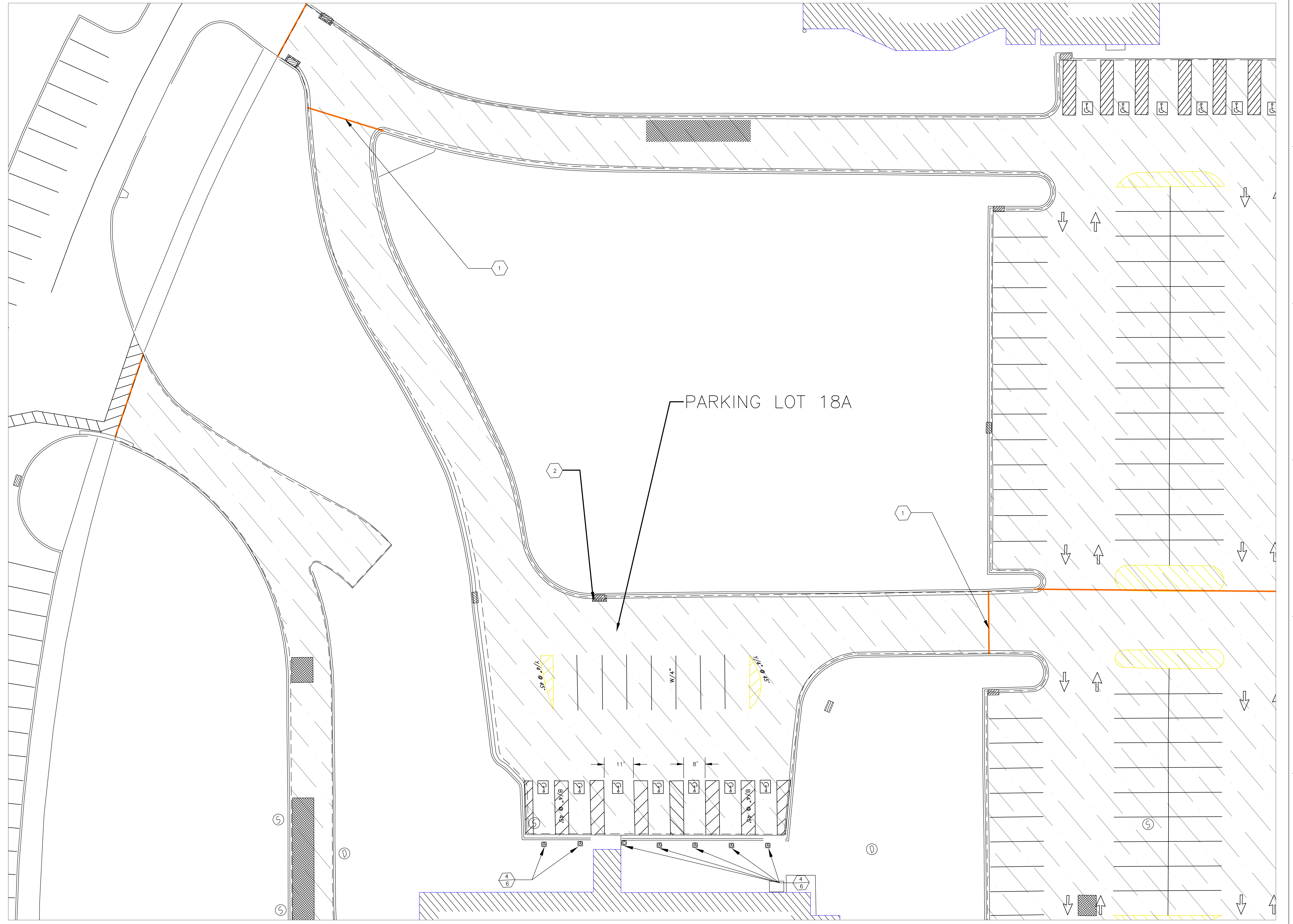
Drawing Title	LOT 18
Approved:	

Project Title	PARKING LOT SEALANT AND JOINT REPAIR
Location	LEBANON VA MEDICAL CENTER
Issue Date	

Project Number	595-23-108
Building Number	
Drawing Number	CS102
Dwg. 5 OF 13	

- PLAN KEYED NOTES:**
- ① DELINEATION LINE OF SEALANT
  - ② POTHOLE REPAIR
  - ③ FULL DEPTH REPAIR
  - ④ RELOCATE EXISTING SIGN POST TO ALIGN WITH PAVEMENT MARKINGS
  - ⑤ REPLACE EXISTING HANDICAP SIGN, WALL MOUNT TO ALIGN WITH PAVEMENT MARKINGS.
  - ⑥ REPLACE EXISTING HANDICAP SIGN
  - ⑦ EXISTING CONCRETE TO BE REMOVED AND REPLACED AT NEAREST JOINTS.
  - ⑧ INSTALL 2'X5' DETECTABLE WARNING STRIP, ALIGN WITH PAVEMENT MARKINGS.

- U-CHANNEL POST, 8'  
(PROVIDE AND INSTALL) REFER TO SIGN TABULATION CHART
- SIGNAGE W/ LABEL  
(PROVIDE AND INSTALL) REFER TO DETAILS 8 & 9



Revisions:	Date:

CONSULTANT	ARCHITECT/ENGINEER OF RECORD	STAMP

Office of Construction and Facilities Management  
 U.S. Department of Veterans Affairs

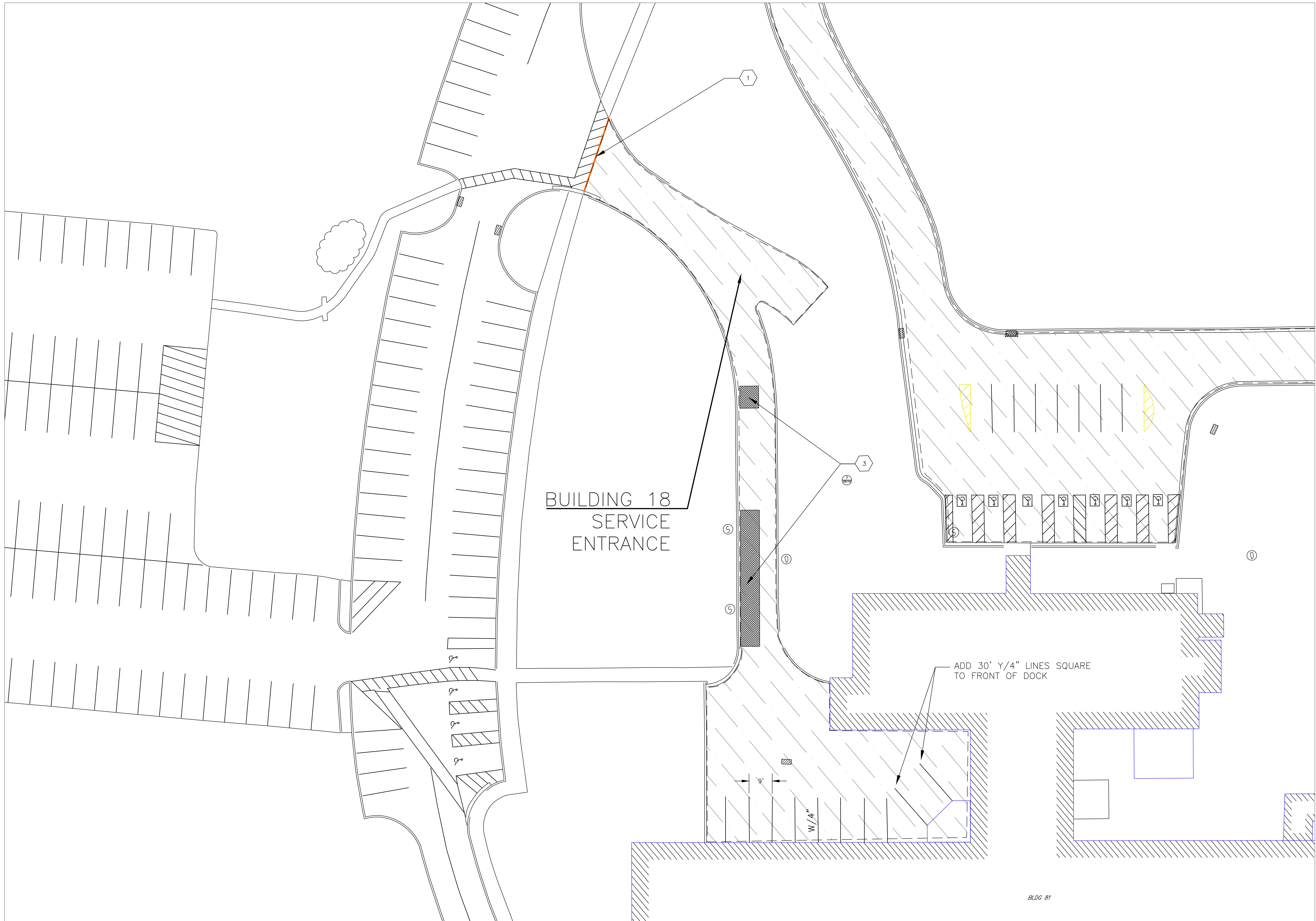
Drawing Title	LOT 18A
Approved:	

Project Title	PARKING LOT SEALANT AND JOINT REPAIR
Location	LEBANON VA MEDICAL CENTER
Issue Date	

Project Number	595-23-108
Building Number	
Drawing Number	CS103
Dwg. 6 OF 13	

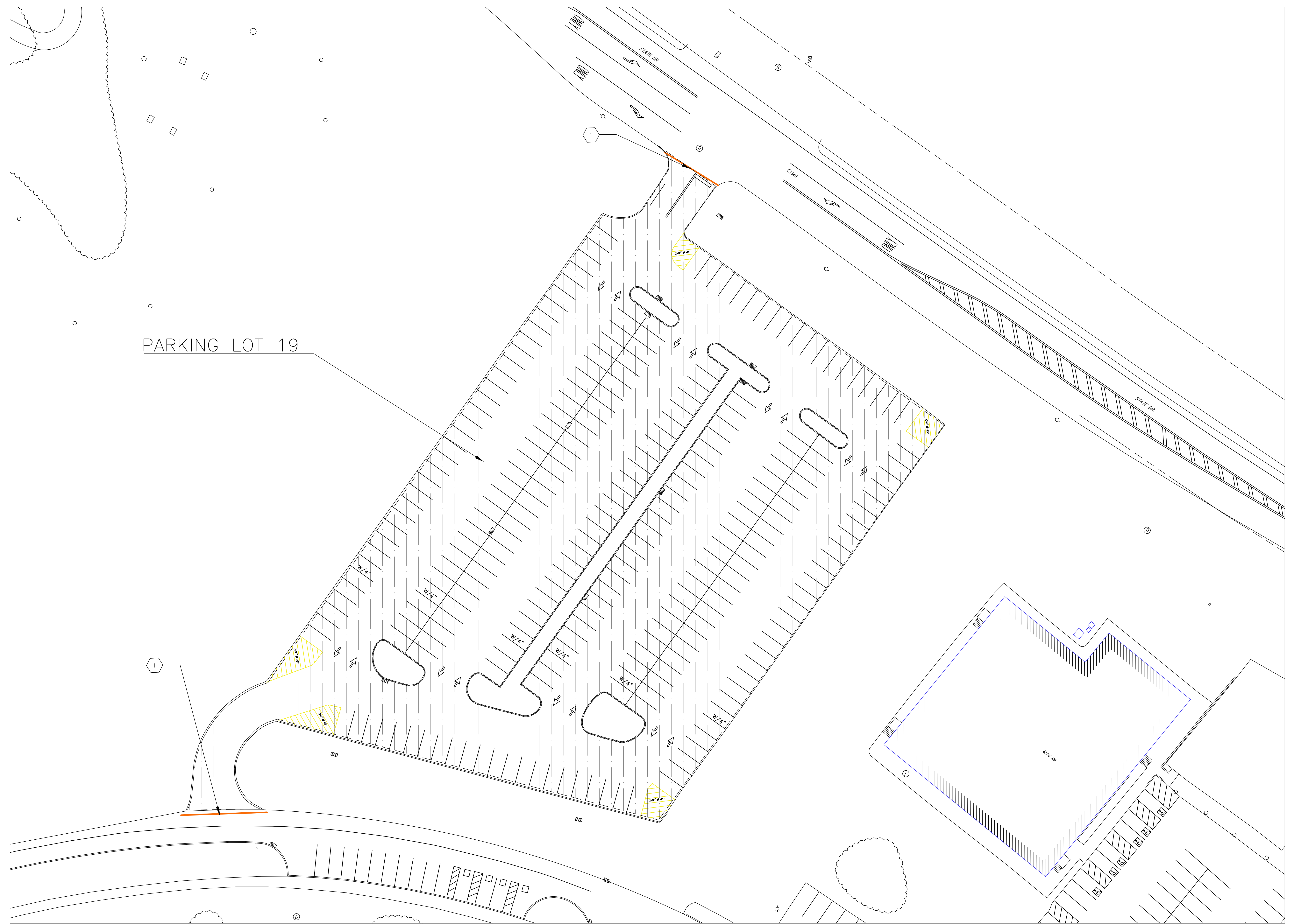
PLAN KEYED NOTES:

- ① DELINEATION LINE OF SEALANT
- ② POTHOLE REPAIR
- ③ FULL DEPTH REPAIR
- ④ RELOCATE EXISTING SIGN POST TO ALIGN WITH PAVEMENT MARKINGS
- ⑤ REPLACE EXISTING HANDICAP SIGN, WALL MOUNT TO ALIGN WITH PAVEMENT MARKINGS.
- ⑥ REPLACE EXISTING HANDICAP SIGN
- ⑦ EXISTING CONCRETE TO BE REMOVED AND REPLACED AT NEAREST JOINTS.
- ⑧ INSTALL 2'X5' DETECTABLE WARNING STRIP, ALIGN WITH PAVEMENT MARKINGS.



		CONSULTANT	ARCHITECT/ENGINEER OF RECORD	STAMP	Office of Construction and Facilities Management	Drawing Title <b>BLDG. 18 SERVICE ENTRANCE</b>		Project Title PARKING LOT SEALANT AND JOINT REPAIR	Project Number 595-23-108		
					VA U.S. Department of Veterans Affairs	Approved:		Location LEBANON VA MEDICAL CENTER	Drawing Number <b>CS104</b>		
Revisions:	Date:							Issue Date	Checked	Drawn CFF	Dwg. 7 OF 13

- PLAN KEYED NOTES:**
- ① DELINEATION LINE OF SEALANT
  - ② POT HOLE REPAIR
  - ③ FULL DEPTH REPAIR
  - ④ RELOCATE EXISTING SIGN POST TO ALIGN WITH PAVEMENT MARKINGS
  - ⑤ REPLACE EXISTING HANDICAP SIGN, WALL MOUNT TO ALIGN WITH PAVEMENT MARKINGS.
  - ⑥ REPLACE EXISTING HANDICAP SIGN
  - ⑦ EXISTING CONCRETE TO BE REMOVED AND REPLACED AT NEAREST JOINTS.
  - ⑧ INSTALL 2'X5' DETECTABLE WARNING STRIP, ALIGN WITH PAVEMENT MARKINGS.



A  
B  
C  
D  
E  
F

A  
B  
C  
D  
E  
F

Revisions:	Date:

CONSULTANT

ARCHITECT/ENGINEER OF RECORD

STAMP

Office of Construction and Facilities Management  
U.S. Department of Veterans Affairs

Drawing Title  
LOT 19

Approved:

Project Title  
PARKING LOT SEALANT AND JOINT REPAIR

Project Number  
595-23-108

Location  
LEBANON VA MEDICAL CENTER

Drawing Number  
CS105

Issue Date  
Checked  
Drawn  
CFF

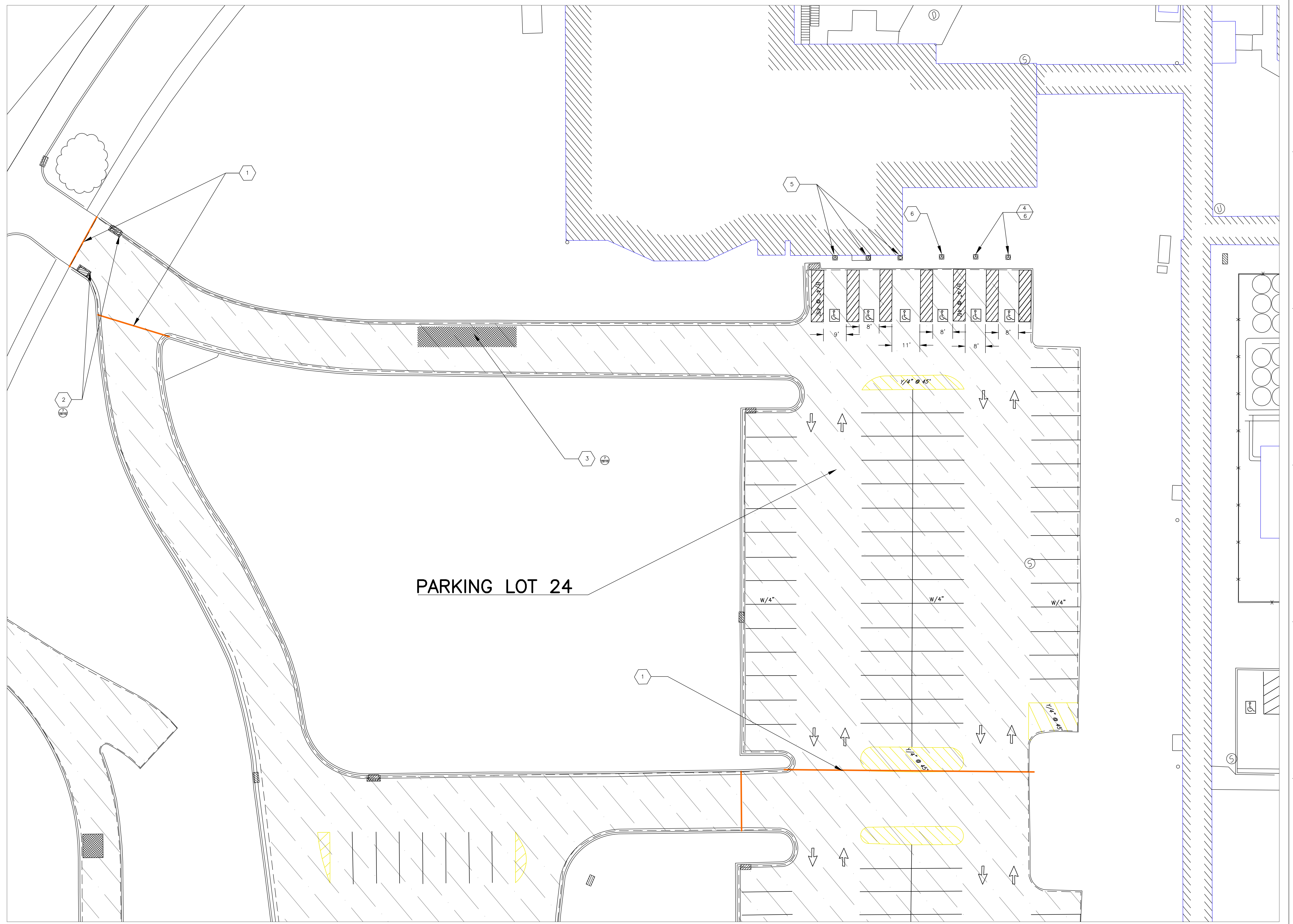
Dwg. 8 OF 13



- PLAN KEYED NOTES:**
- ① DELINEATION LINE OF SEALANT
  - ② POTHOLE REPAIR
  - ③ FULL DEPTH REPAIR
  - ④ RELOCATE EXISTING SIGN POST TO ALIGN WITH PAVEMENT MARKINGS
  - ⑤ REPLACE EXISTING HANDICAP SIGN, WALL MOUNT TO ALIGN WITH PAVEMENT MARKINGS.
  - ⑥ REPLACE EXISTING HANDICAP SIGN
  - ⑦ EXISTING CONCRETE TO BE REMOVED AND REPLACED AT NEAREST JOINTS.
  - ⑧ INSTALL 2'X5' DETECTABLE WARNING STRIP, ALIGN WITH PAVEMENT MARKINGS.

U-CHANNEL POST, 8'  
(PROVIDE AND INSTALL) REFER TO SIGN TABULATION CHART

SIGNAGE W/ LABEL  
(PROVIDE AND INSTALL) REFER TO DETAILS 8 & 9



PARKING LOT 24

Revisions:	Date:

CONSULTANT

ARCHITECT/ENGINEER OF RECORD

STAMP

Office of Construction and Facilities Management  
U.S. Department of Veterans Affairs

Drawing Title  
LOT 24

Approved:

Project Title  
PARKING LOT SEALANT AND JOINT REPAIR

Location  
LEBANON VA MEDICAL CENTER

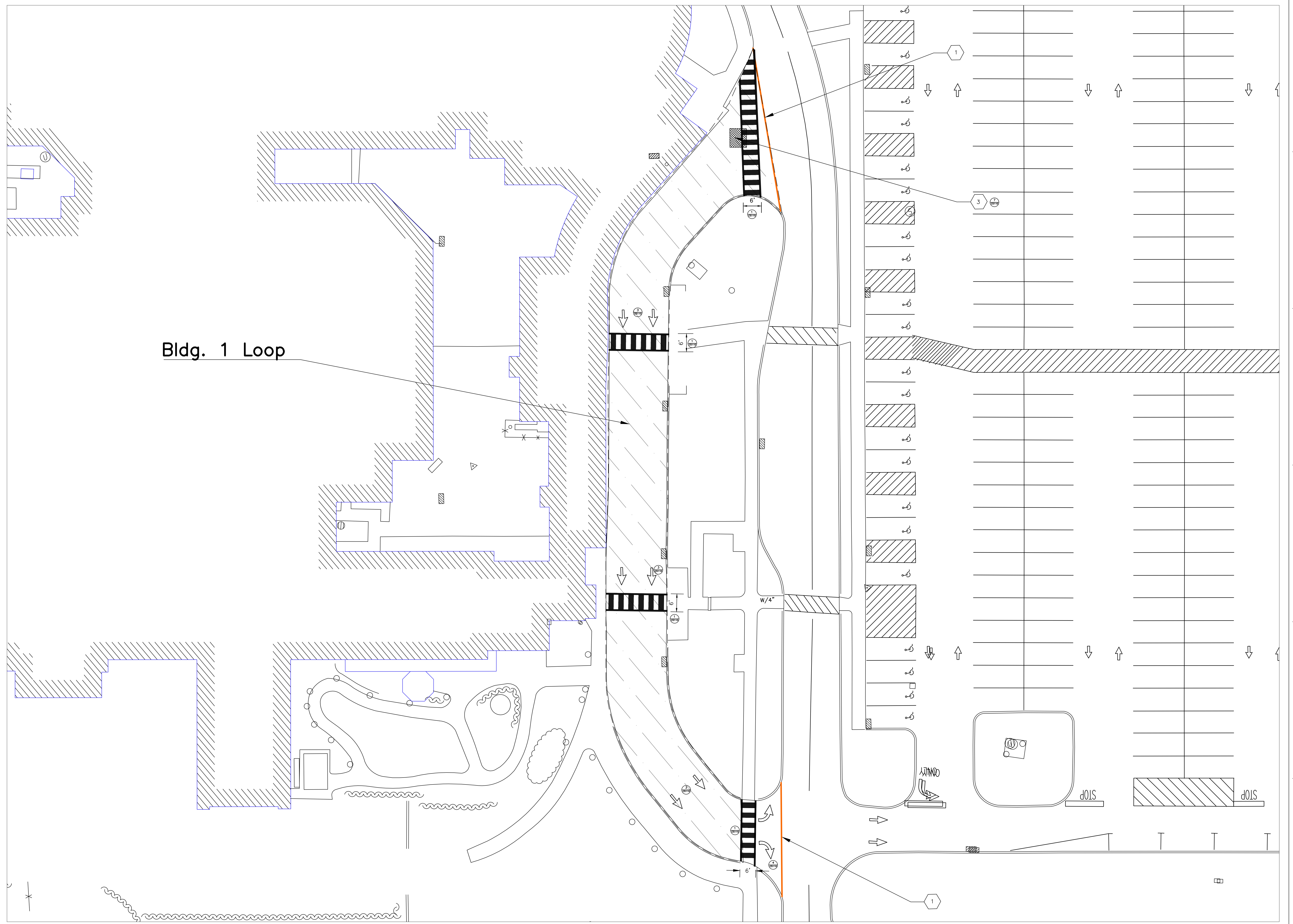
Project Number  
595-23-108

Building Number

Drawing Number  
CS106

Dwg. 9 OF 13

- PLAN KEYED NOTES:**
- ① DELINEATION LINE OF SEALANT
  - ② POT HOLE REPAIR
  - ③ FULL DEPTH REPAIR
  - ④ RELOCATE EXISTING SIGN POST TO ALIGN WITH PAVEMENT MARKINGS
  - ⑤ REPLACE EXISTING HANDICAP SIGN, WALL MOUNT TO ALIGN WITH PAVEMENT MARKINGS.
  - ⑥ REPLACE EXISTING HANDICAP SIGN
  - ⑦ EXISTING CONCRETE TO BE REMOVED AND REPLACED AT NEAREST JOINTS.
  - ⑧ INSTALL 2'x5' DETECTABLE WARNING STRIP, ALIGN WITH PAVEMENT MARKINGS.



Bldg. 1 Loop

Revisions:	Date:

CONSULTANT

ARCHITECT/ENGINEER OF RECORD

STAMP

Office of Construction and Facilities Management  
 U.S. Department of Veterans Affairs

Drawing Title  
**BLDG. 1 LOOP**

Approved:

Project Title  
 PARKING LOT SEALANT AND JOINT REPAIR

Location  
 LEBANON VA MEDICAL CENTER

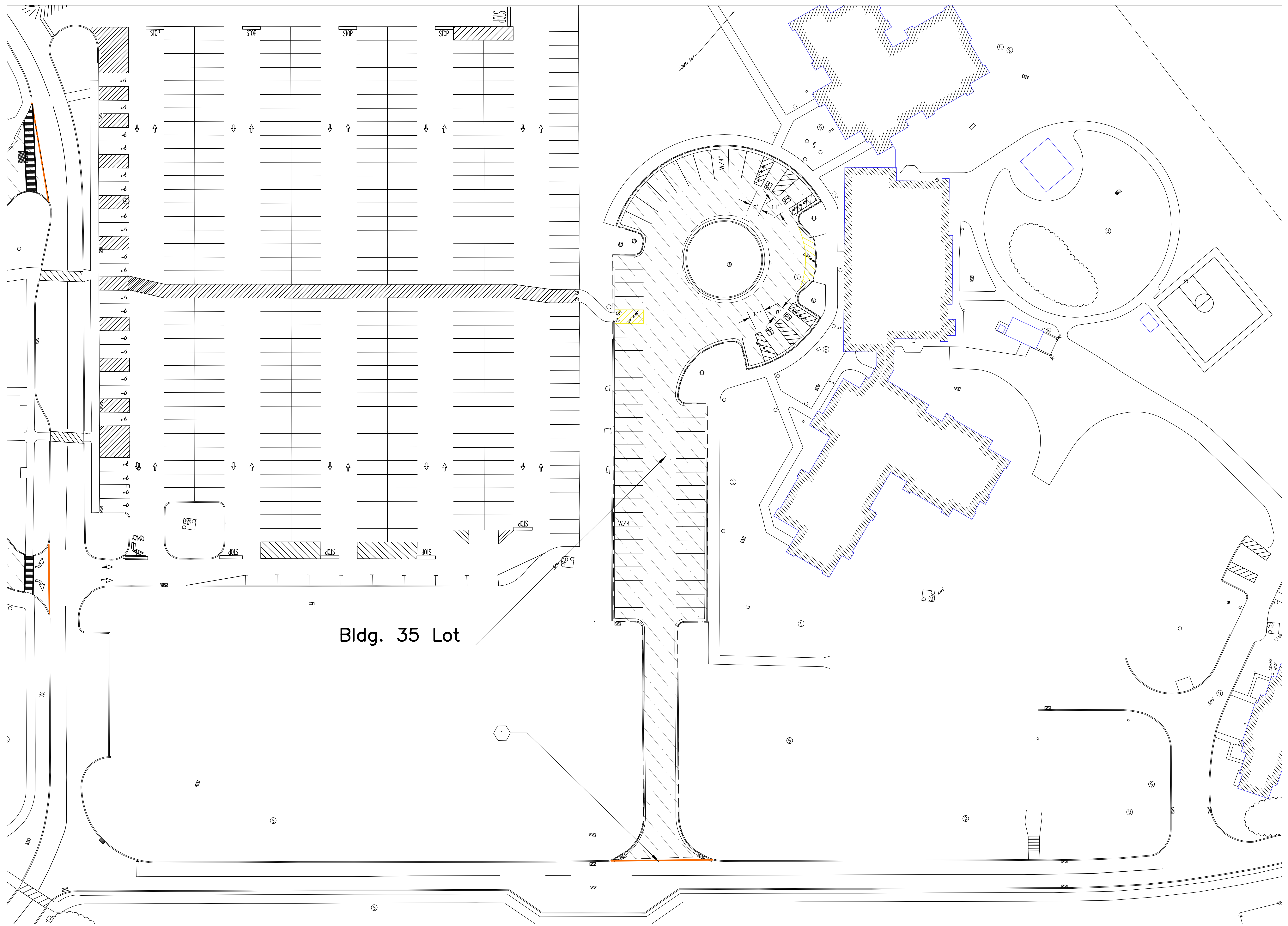
Project Number  
 595-23-108

Building Number

Drawing Number  
**CS107**

Dwg. 10 OF 13

- PLAN KEYED NOTES:**
- ① DELINEATION LINE OF SEALANT
  - ② POTHOLE REPAIR
  - ③ FULL DEPTH REPAIR
  - ④ RELOCATE EXISTING SIGN POST TO ALIGN WITH PAVEMENT MARKINGS
  - ⑤ REPLACE EXISTING HANDICAP SIGN. WALL MOUNT TO ALIGN WITH PAVEMENT MARKINGS.
  - ⑥ REPLACE EXISTING HANDICAP SIGN
  - ⑦ EXISTING CONCRETE TO BE REMOVED AND REPLACED AT NEAREST JOINTS.
  - ⑧ INSTALL 2'x5' DETECTABLE WARNING STRIP. ALIGN WITH PAVEMENT MARKINGS.



Bldg. 35 Lot

Revisions:	Date:

CONSULTANT	ARCHITECT/ENGINEER OF RECORD	STAMP

Office of Construction and Facilities Management  
 U.S. Department of Veterans Affairs

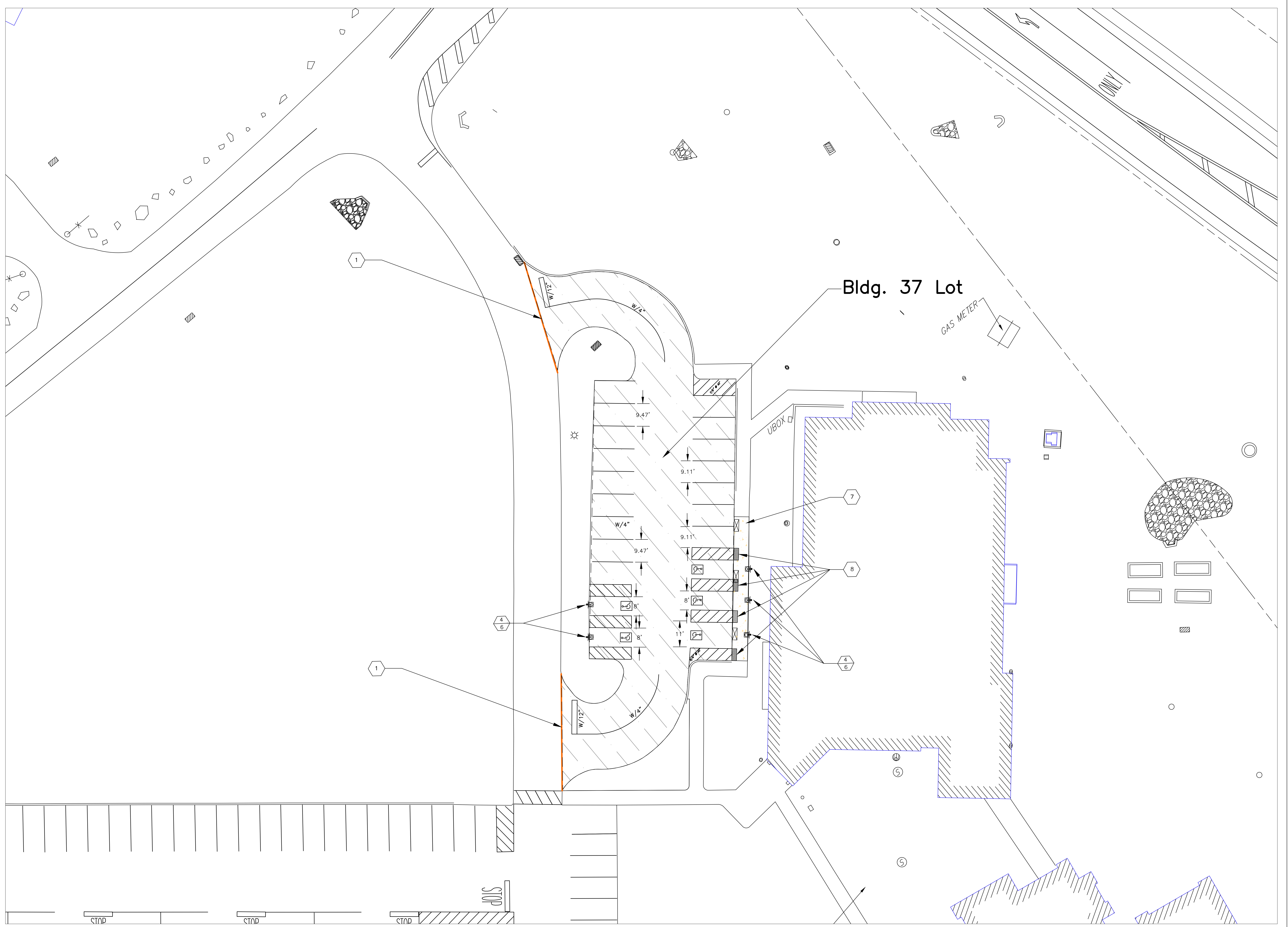
Drawing Title	BLDG. 35 LOT
Approved:	

Project Title	PARKING LOT SEALANT AND JOINT REPAIR
Location	LEBANON VA MEDICAL CENTER
Issue Date	

Project Number	595-23-108
Building Number	
Drawing Number	CS108
Dwg. 11 OF 13	

**PLAN KEYED NOTES:**

- ① DELINEATION LINE OF SEALANT
- ② POTHOLE REPAIR
- ③ FULL DEPTH REPAIR
- ④ RELOCATE EXISTING SIGN POST TO ALIGN WITH PAVEMENT MARKINGS
- ⑤ REPLACE EXISTING HANDICAP SIGN WALL MOUNT TO ALIGN WITH PAVEMENT MARKINGS.
- ⑥ REPLACE EXISTING HANDICAP SIGN
- ⑦ EXISTING CONCRETE TO REMOVED AND REPLACED AT NEAREST JOINTS.
- ⑧ INSTALL 2'X5' DETECTABLE WARNING STRIP. ALIGN WITH PAVEMENT MARKINGS.



A

B

C

D

E

F

Revisions:	Date:

CONSULTANT

ARCHITECT/ENGINEER OF RECORD

STAMP

Office of Construction and Facilities Management  
U.S. Department of Veterans Affairs

Drawing Title  
**BLDG. 37 LOT**

Approved:

Project Title  
**PARKING LOT SEALANT AND JOINT REPAIR**

Location  
**LEBANON VA MEDICAL CENTER**

Issue Date	Checked	Drawn
		CFF

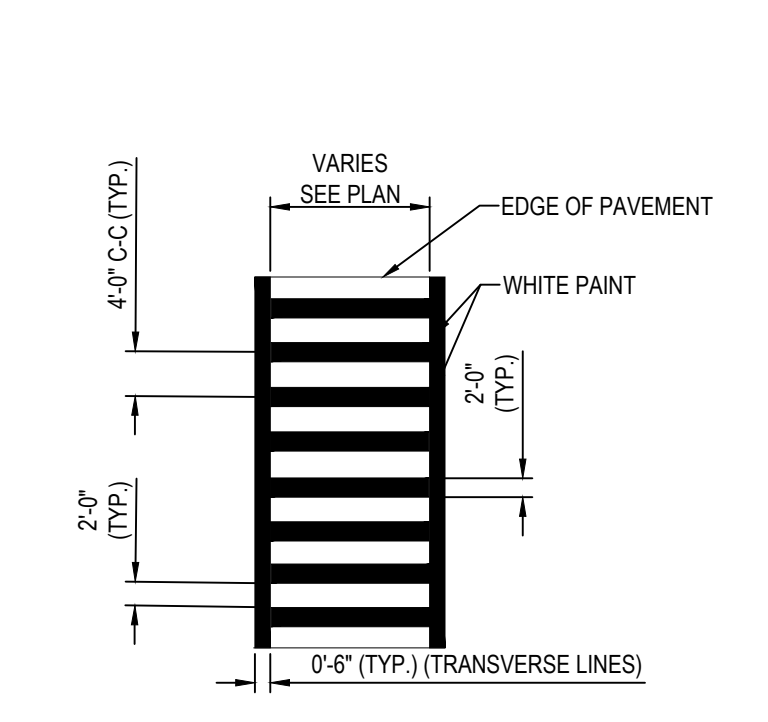
Project Number  
**595-23-108**

Building Number

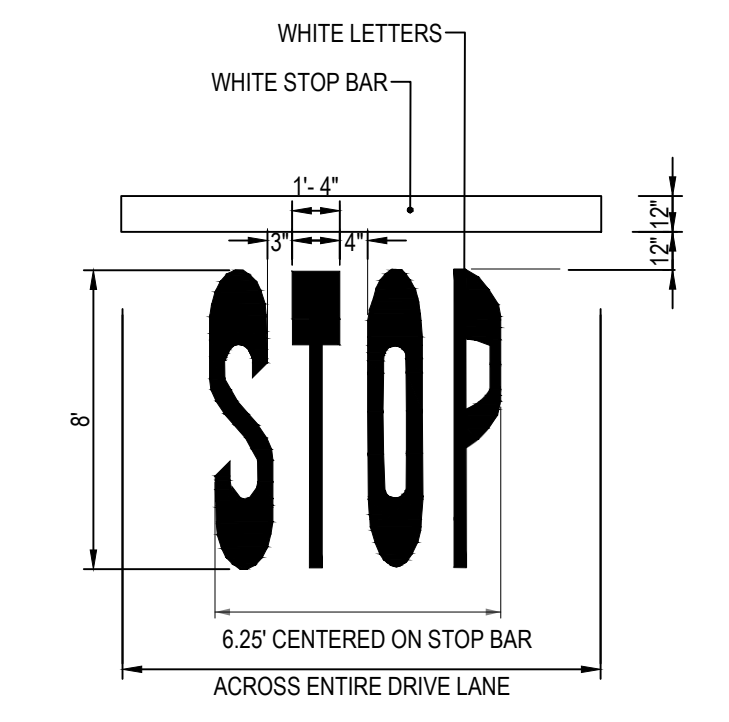
Drawing Number  
**CS109**

Dwg. 12 OF 13

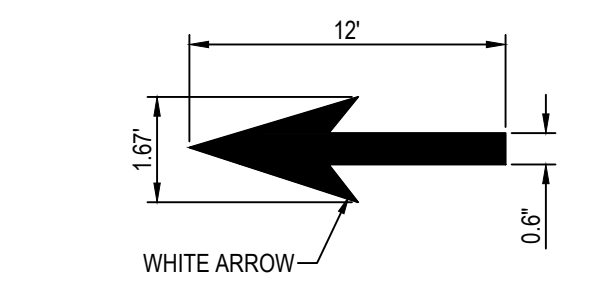
- PLAN KEYED NOTES:**
- ① DELINEATION LINE OF SEALANT
  - ② POTHOLE REPAIR
  - ③ FULL DEPTH REPAIR
  - ④ RELOCATE EXISTING SIGN POST TO ALIGN WITH PAVEMENT MARKINGS
  - ⑤ REPLACE EXISTING HANDICAP SIGN. WALL MOUNT TO ALIGN WITH PAVEMENT MARKINGS.
  - ⑥ REPLACE EXISTING HANDICAP SIGN
  - ⑦ EXISTING CONCRETE TO REMOVED AND REPLACED AT NEAREST JOINTS.
  - ⑧ INSTALL 2"x5" DETECTABLE WARNING STRIP. ALIGN WITH PAVEMENT MARKINGS.



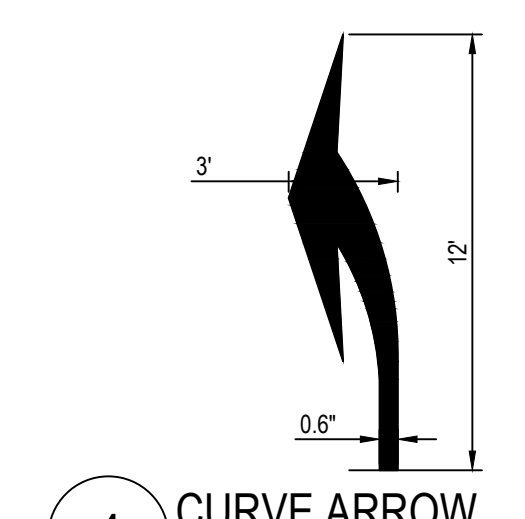
**1 CROSSWALK DETAIL**  
N.T.S.  
SOURCE: PADOT PUB. 111, TC-8600 SHEET 6 OF 13



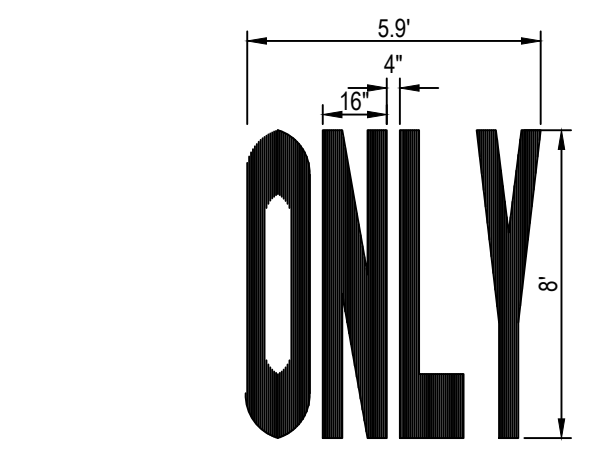
**2 PAINTED STOP BAR**  
N.T.S.  
SOURCE: PADOT PUB. 111, TC-8600 SHEET 9 OF 13



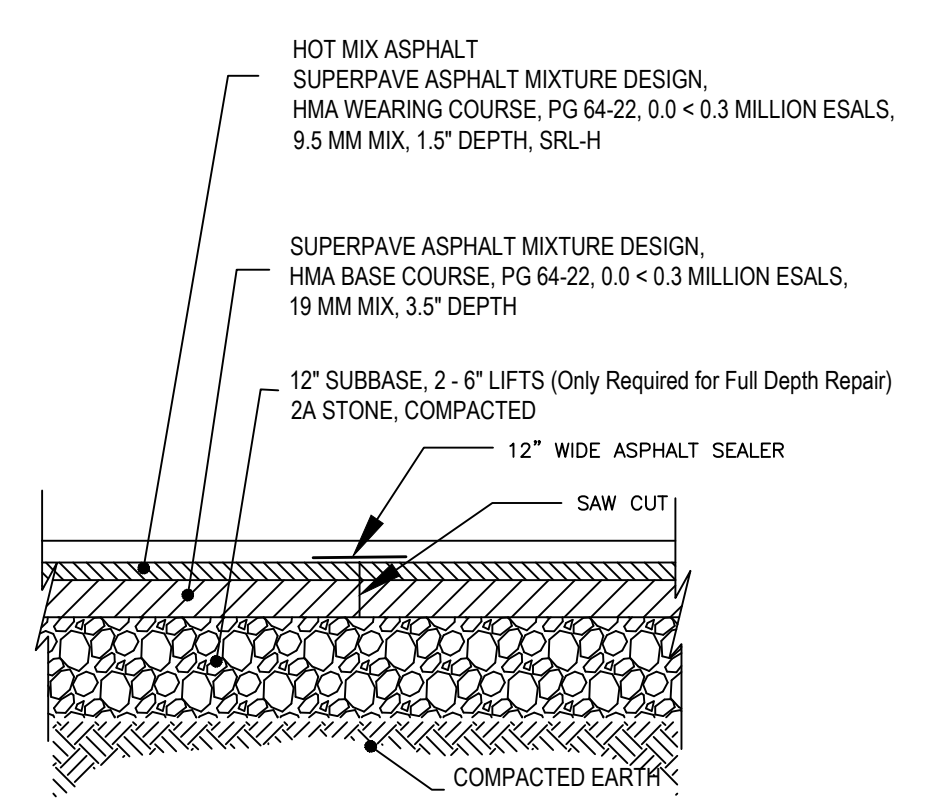
**3 STRAIGHT ARROW**  
N.T.S.  
SOURCE: PADOT PUB. 111, TC-8600 SHEET 10 OF 13



**4 CURVE ARROW**  
N.T.S.  
SOURCE: PADOT PUB. 111, TC-8600 SHEET 10 OF 13

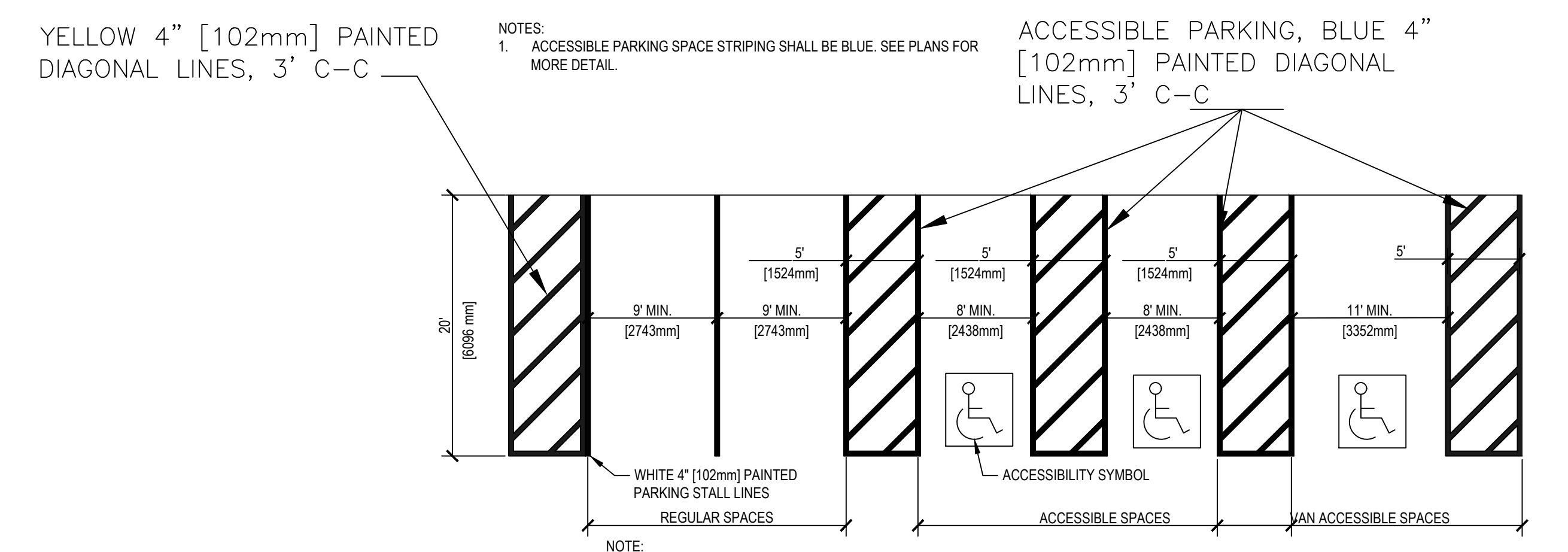


**5 PAINTED ONLY**  
N.T.S.  
SOURCE: PADOT PUB. 111, TC-8600 SHEET 9 OF 13



**7 PAVEMENT SECTION & SAWCUT DETAIL**  
N.T.S.

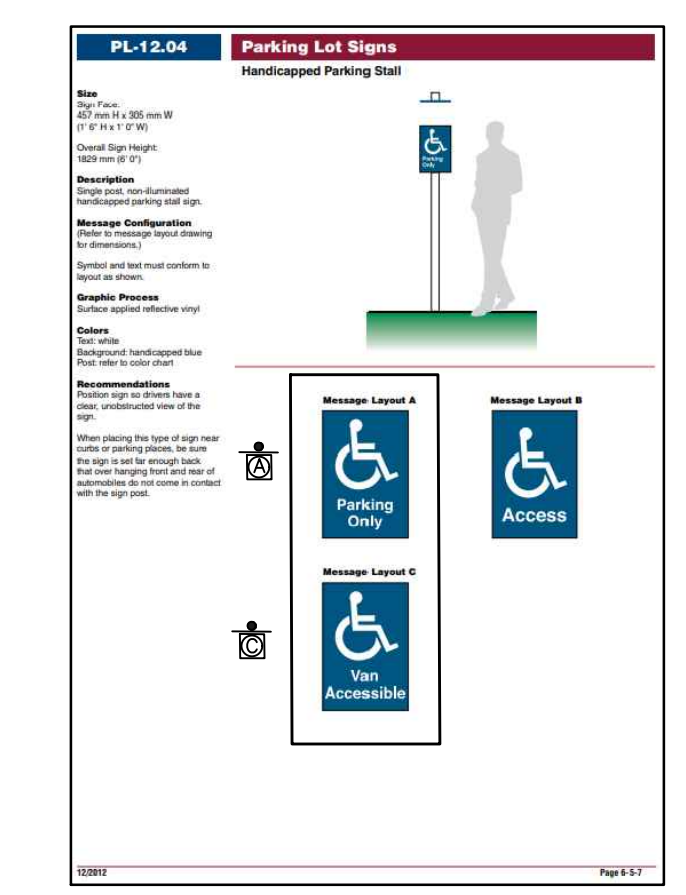
TO BE UTILIZED FOR PARKING LOTS AND DRIVEWAYS



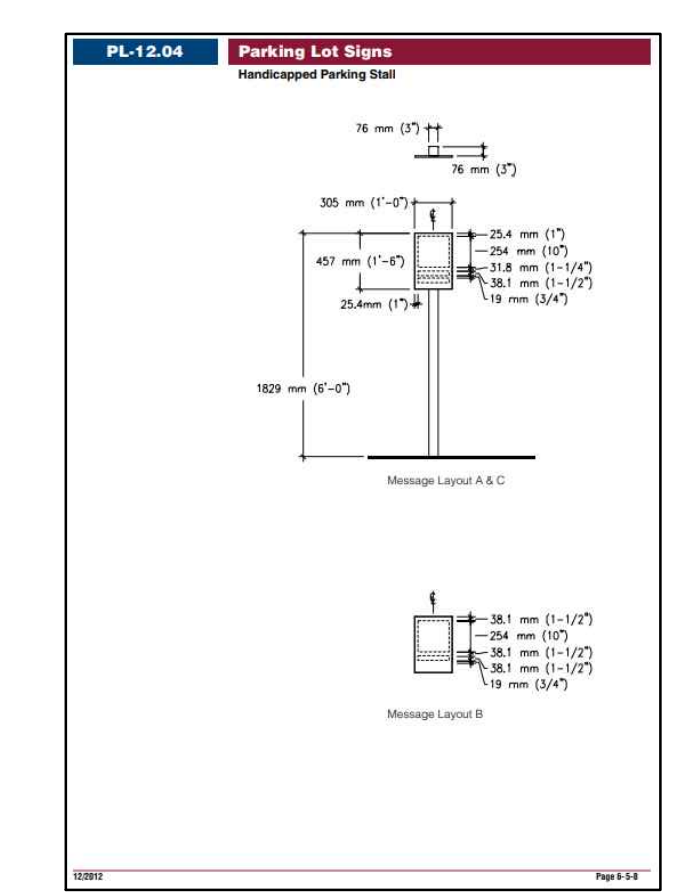
NOTES:  
1. ACCESSIBLE PARKING SPACE STRIPING SHALL BE BLUE. SEE PLANS FOR MORE DETAIL.

- NOTE:
1. SEE SITE AND ENGINEERING DESIGN MANUAL FOR PARKING BAY WIDTHS.
  2. SEE VA BARRIER FREE DESIGN HANDBOOK H-08-13 FOR ACCESSIBLE SPACE QUANTITIES AND SIGNAGE.
  3. ACCESSIBLE SPACE FOR VANS MUST BE DESIGNATED FOR VANS ONLY.
  4. NO PARKING AREAS SHALL BE YELLOW 4" [102mm] LINES, 3' C-C

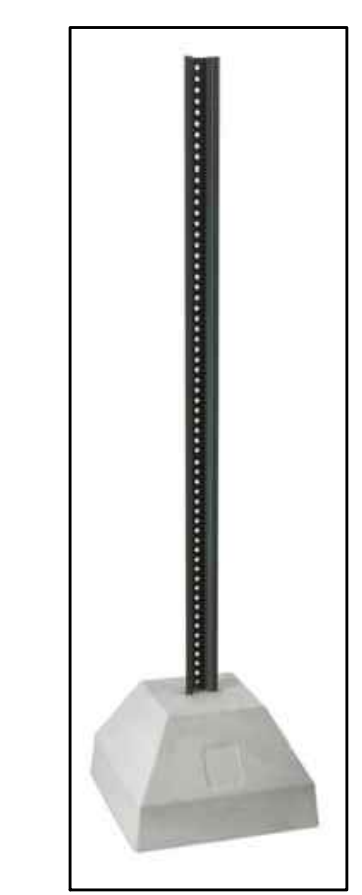
**6 PARKING STALL LAYOUT**  
N.T.S.  
SOURCE: VA STANDARD DETAIL NO. SD321723-01 (MODIFIED)



**8 HANDICAP SIGN DETAIL**  
N.T.S.



**9 POST DETAIL**  
N.T.S.



**10 POST BASE DETAIL**  
N.T.S.

**SIGN TABULATION**

PLAN SYMBOL	SERIES (US DEPT OF VA)	SIZE	QTY.	MESSAGE
A	PL-12.04	18"x12"	28	PARKING ONLY
C	PL-12.04	18"x12"	5	VAN ACCESSIBLE
	2 LB./FT U-CHANNEL POST, 8'	8'	14	
	250 LB BASE W/ U-CHANNEL POST	250 LB	2	

Revisions:	Date:

CONSULTANT

ARCHITECT/ENGINEER OF RECORD

STAMP

Office of Construction and Facilities Management

U.S. Department of Veterans Affairs

Drawing Title  
**CONSTRUCTION DETAILS**

Approved:

Project Title  
**PARKING LOT SEALANT AND JOINT REPAIR**

Project Number  
**595-23-108**

Building Number

Location  
**LEBANON VA MEDICAL CENTER**

Drawing Number  
**CS110**

Issue Date

Checked

Drawn  
**CFF**

Dwg. 13 OF 13