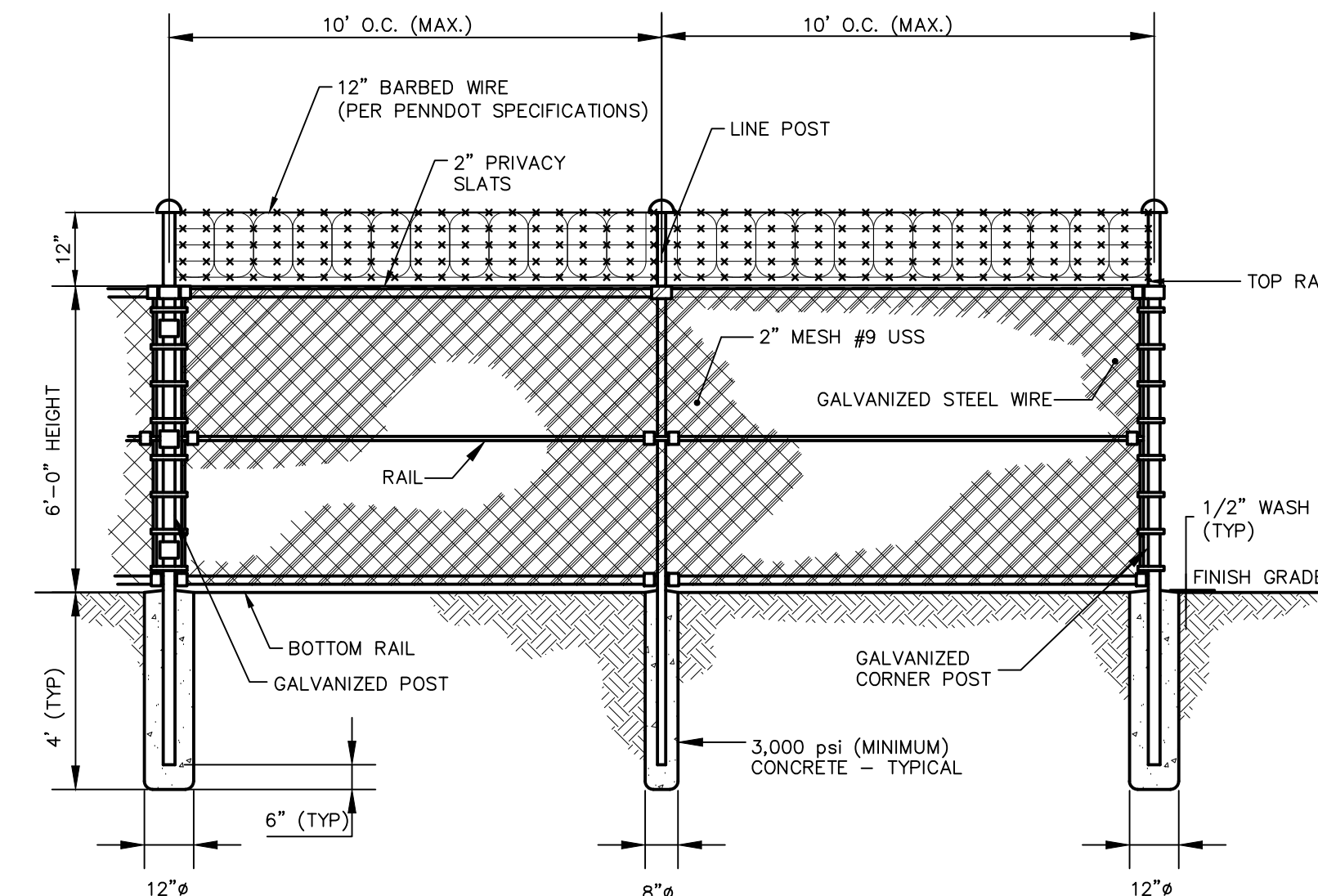


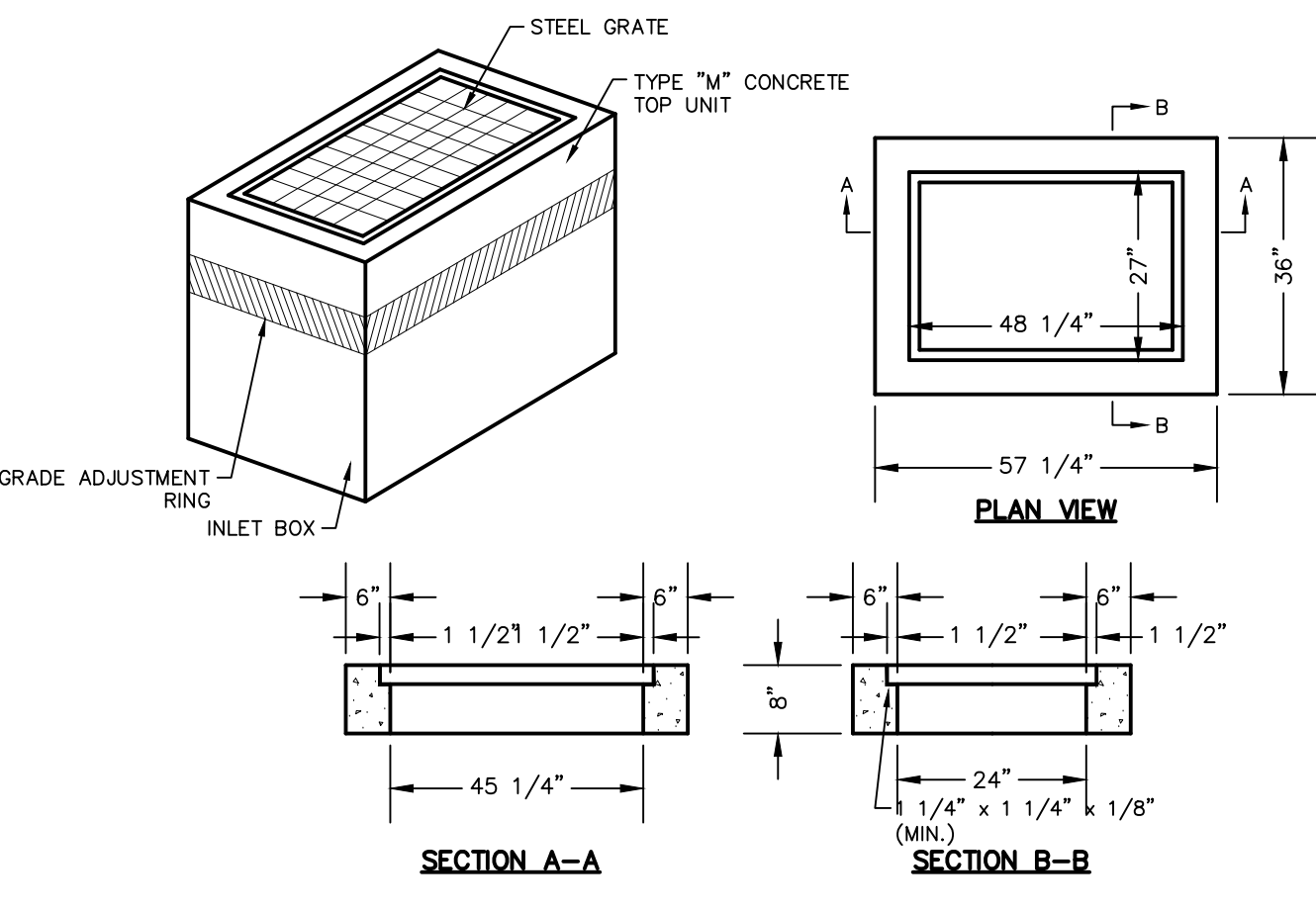
- BEDDING AND BACK FILL NOTES**
- BEDDING**
 - BACK FILL**

TRENCH BEDDING AND BACK FILL REQUIREMENTS



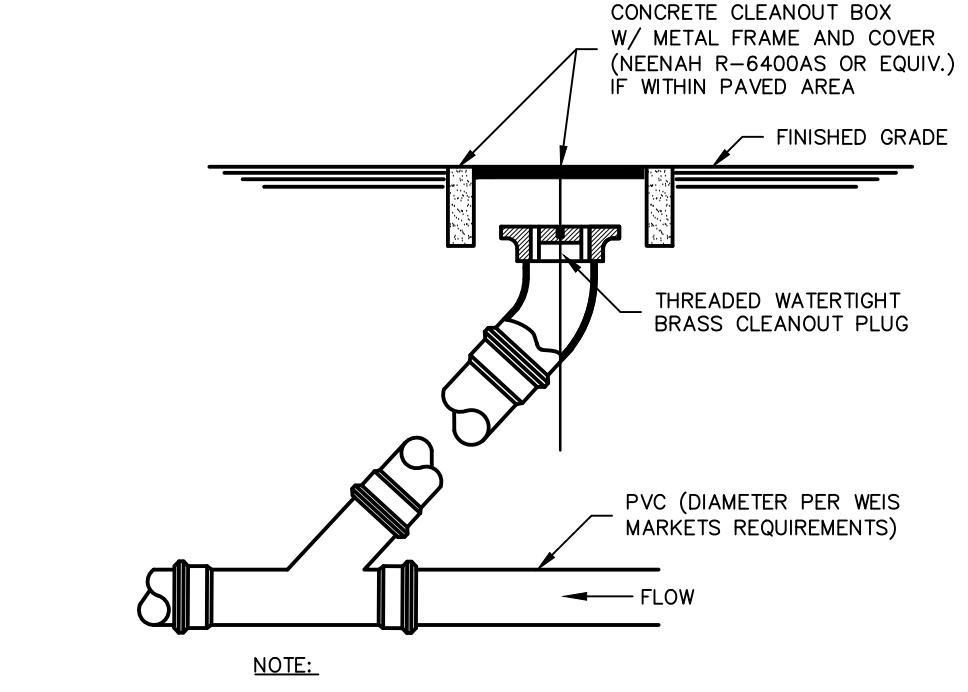
THE FENCE IS TO BE A CHAIN LINK FENCE WITH 2" MESH WITH OPTIONAL 3 STRANDS OF BARBED WIRE ABOVE IT. LINE POSTS ARE 2" SS40 AND CORNER POSTS ARE 2.5" SS40. ALL POSTS ARE TO BE INSTALLED IN 3000 PSI CONCRETE. THE FENCE IS TO HAVE TOP AND BOTTOM RAILS.

TYPICAL CHAIN LINK FENCE



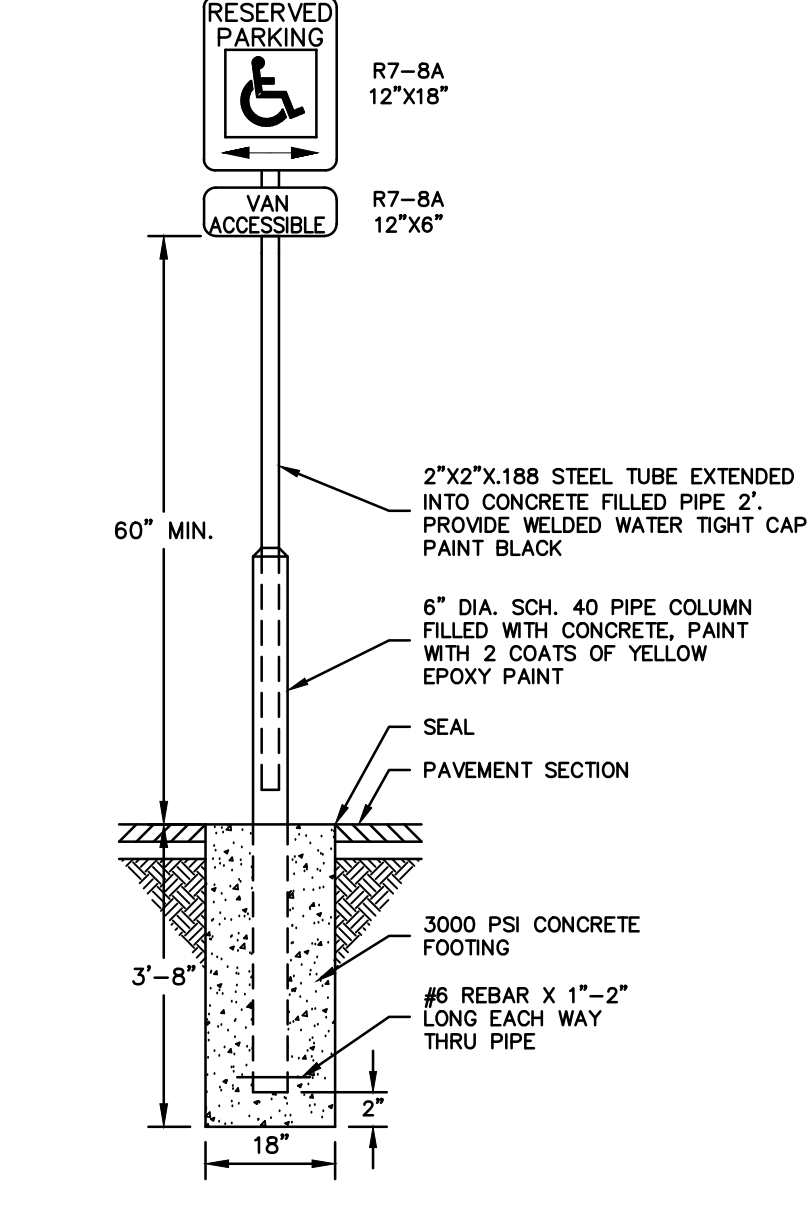
NOTES:
STEPS ARE REQUIRED IN ALL INLETS EXCEEDING FIVE FEET IN DEPTH.

INLET-TYPE M TOP

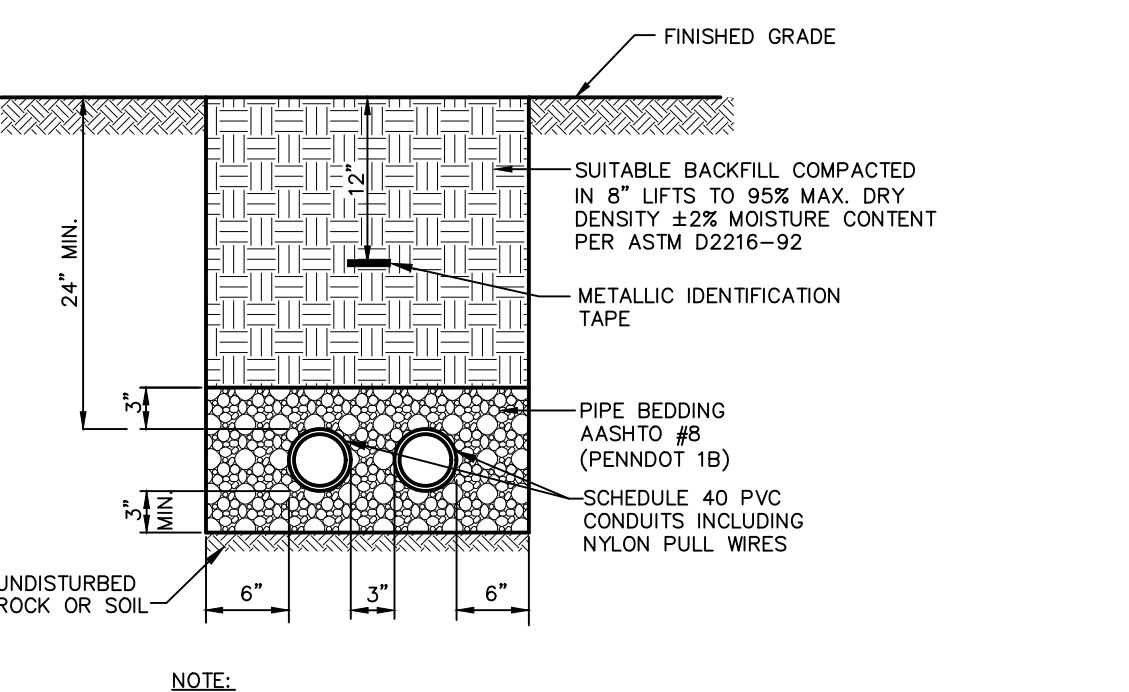


NOTES:
1. G.C. IS TO INSTALL CLEANOUT AT ANY PIPING ANGLE CHANGES & EVERY 50' IN PIPING RUNS GREATER THAN 100' IN LENGTH.

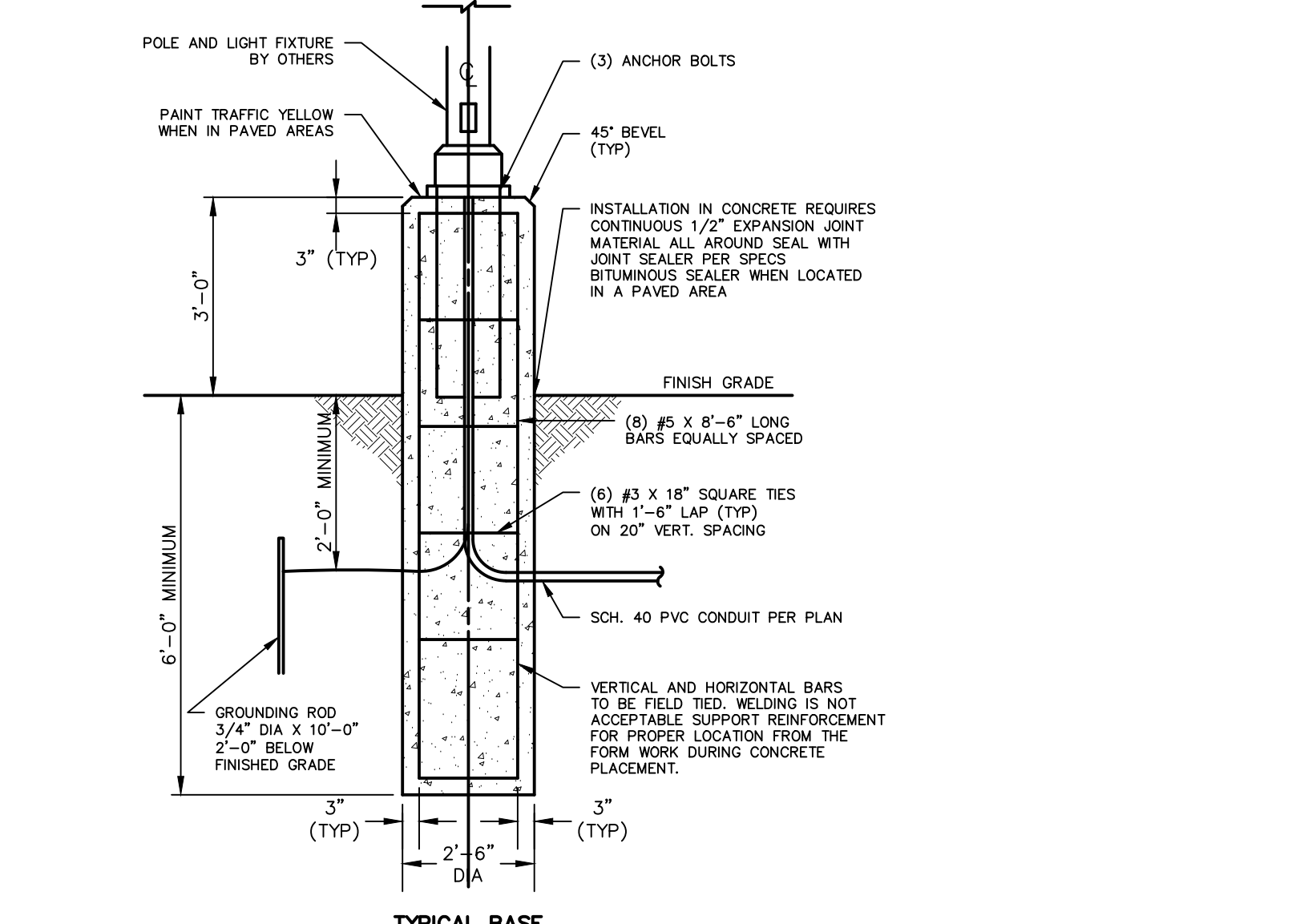
CLEANOUT IN PAVED AREAS



ACCESSIBLE PARKING SIGN

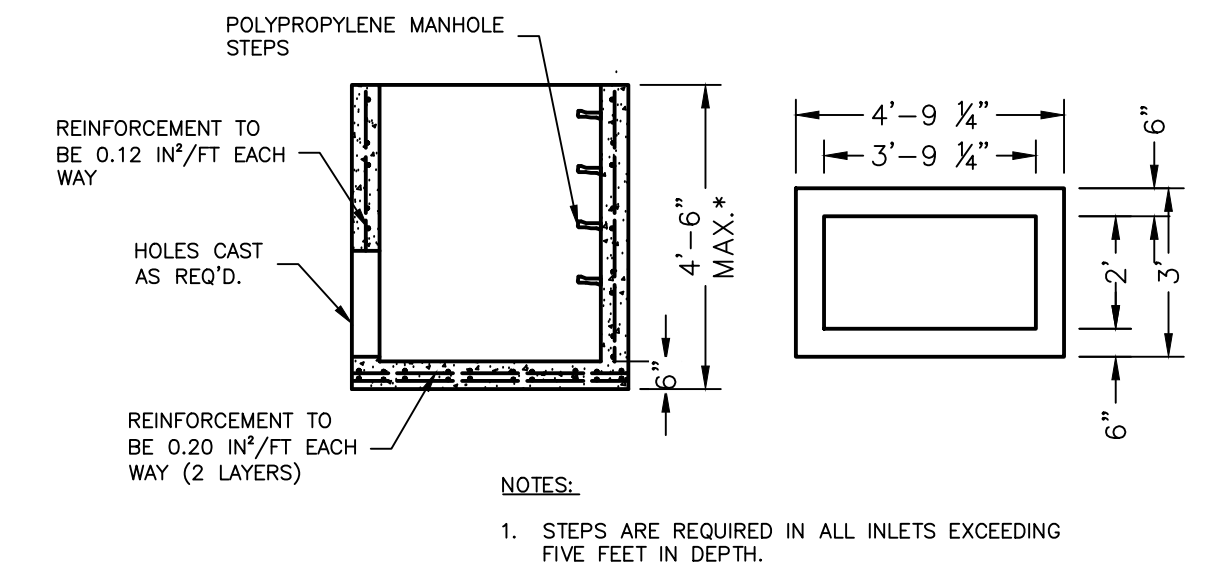


TYPICAL SITE ELECTRICAL/TELECOMMUNICATIONS TRENCH DETAIL

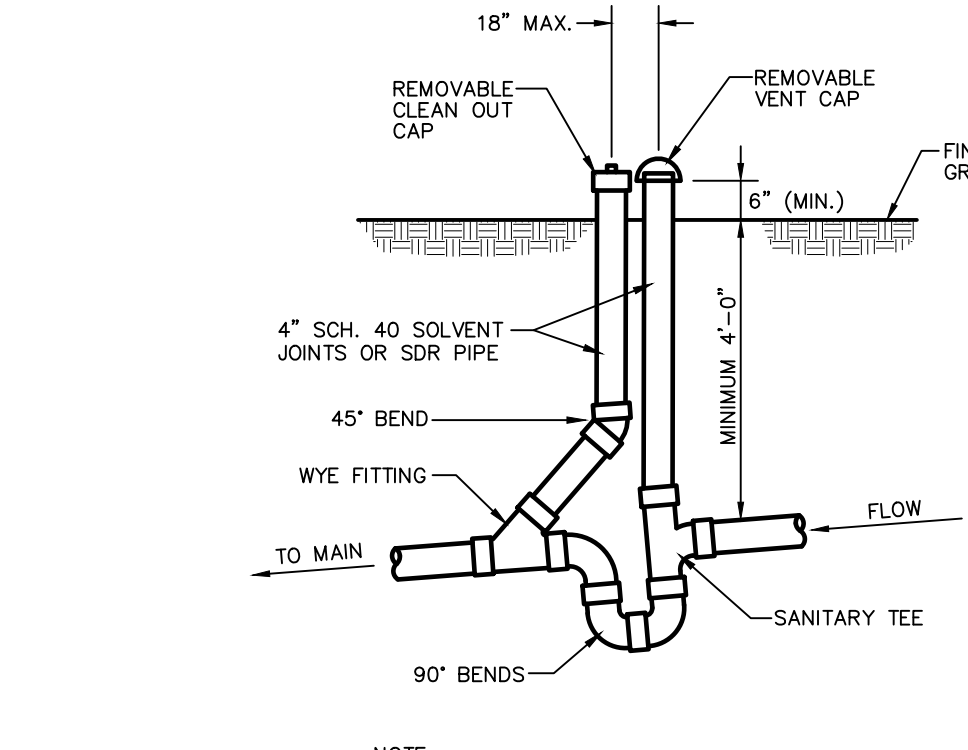


NOTE:
DITCH DEPTH MUST BE ADJUSTED TO COMPENSATE FOR THE SIZE OF PIPE IN ORDER TO MAINTAIN THE REQUIRED MINIMUM COVER OVER GAS MAIN.

LIGHT POLE FOUNDATION

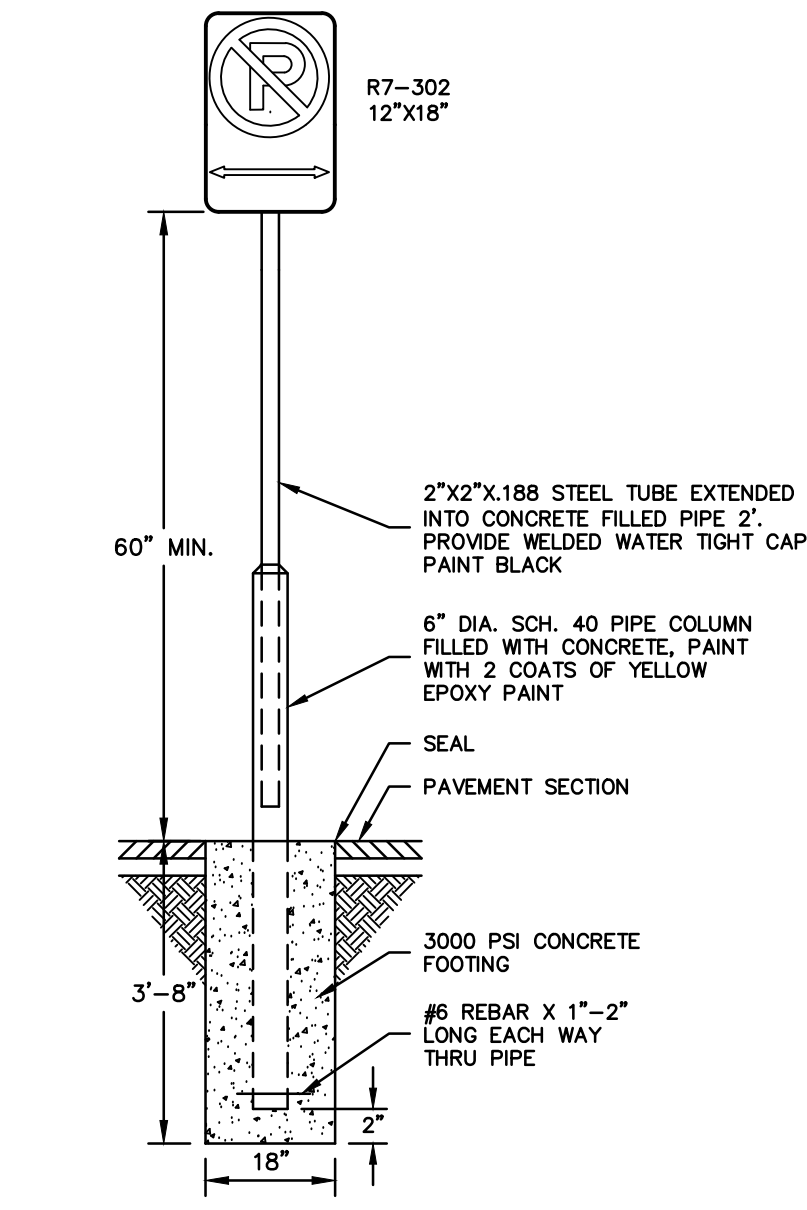


STANDARD INLET BOX

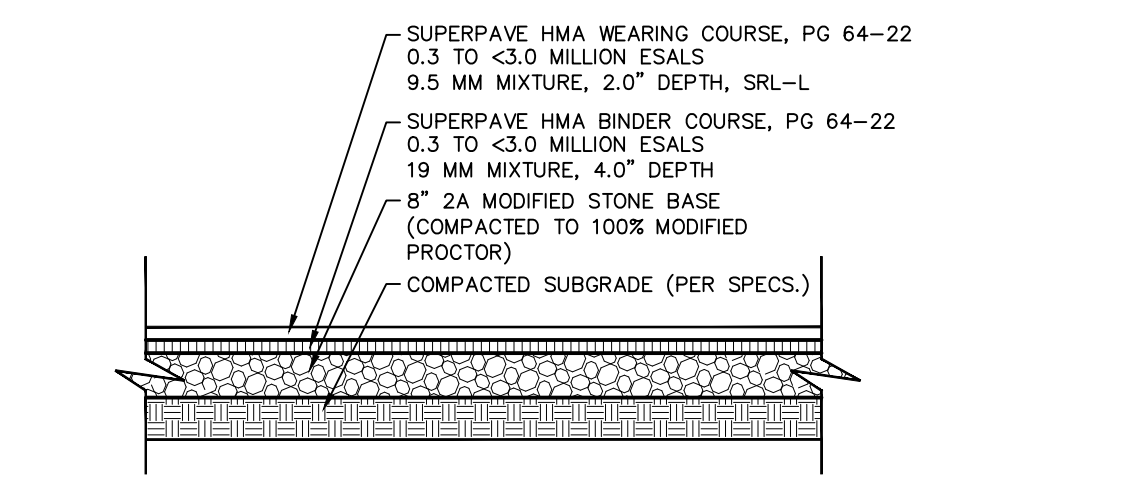


NOTES:
1. CAPS TO REMAIN ABOVE GRADE AT ALL TIMES DURING & AFTER INSTALLATION.
2. TO BE LOCATED IN MULCH AREA OUTSIDE EVERY BUILDING.

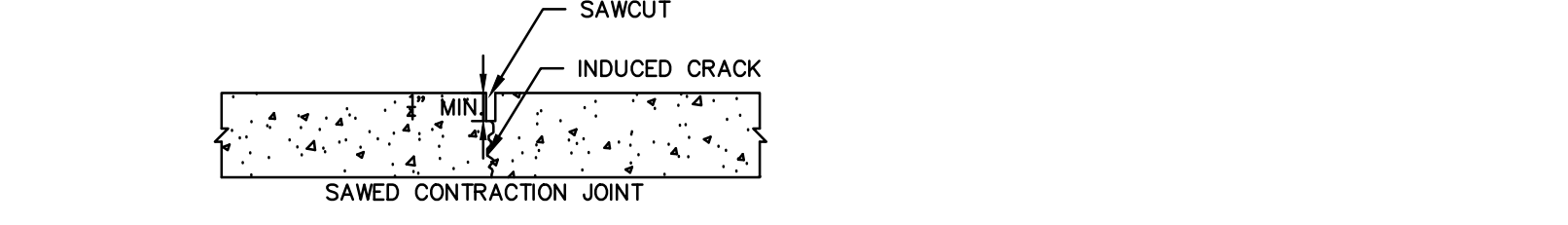
SANITARY SEWER CLEANOUT WITH VENT



NO PARKING SIGN

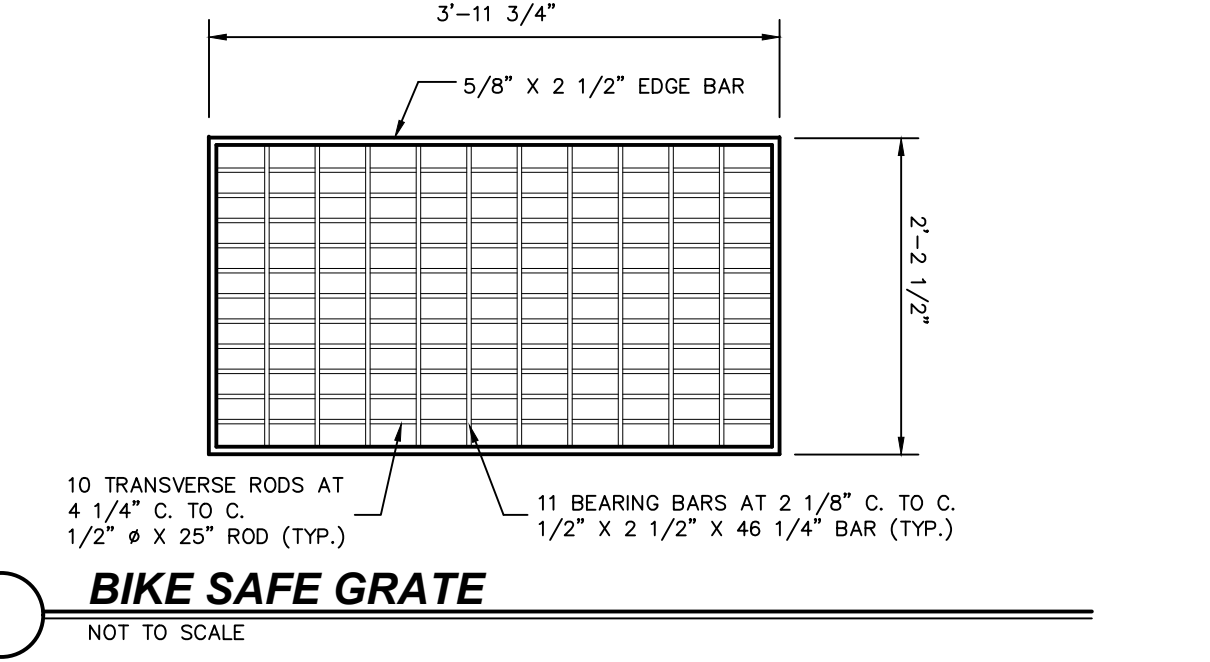


HEAVY DUTY PAVEMENT

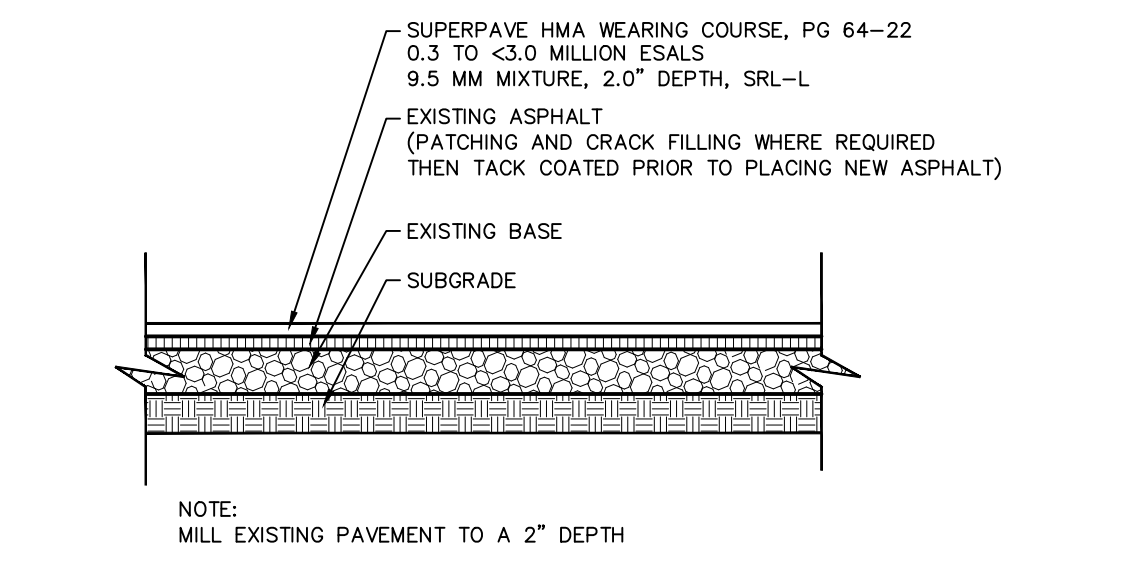


SLAB THICKNESS (IN.)	MAX.-SIZE AGGREGATE (LESS THAN 3/4 IN.)	MAX.-SIZE AGGREGATE (3/4 IN. AND LARGER)
4	6	10
5	10	13
6	12	15
7	14	18
8	16	20
9	18	23
10	20	25

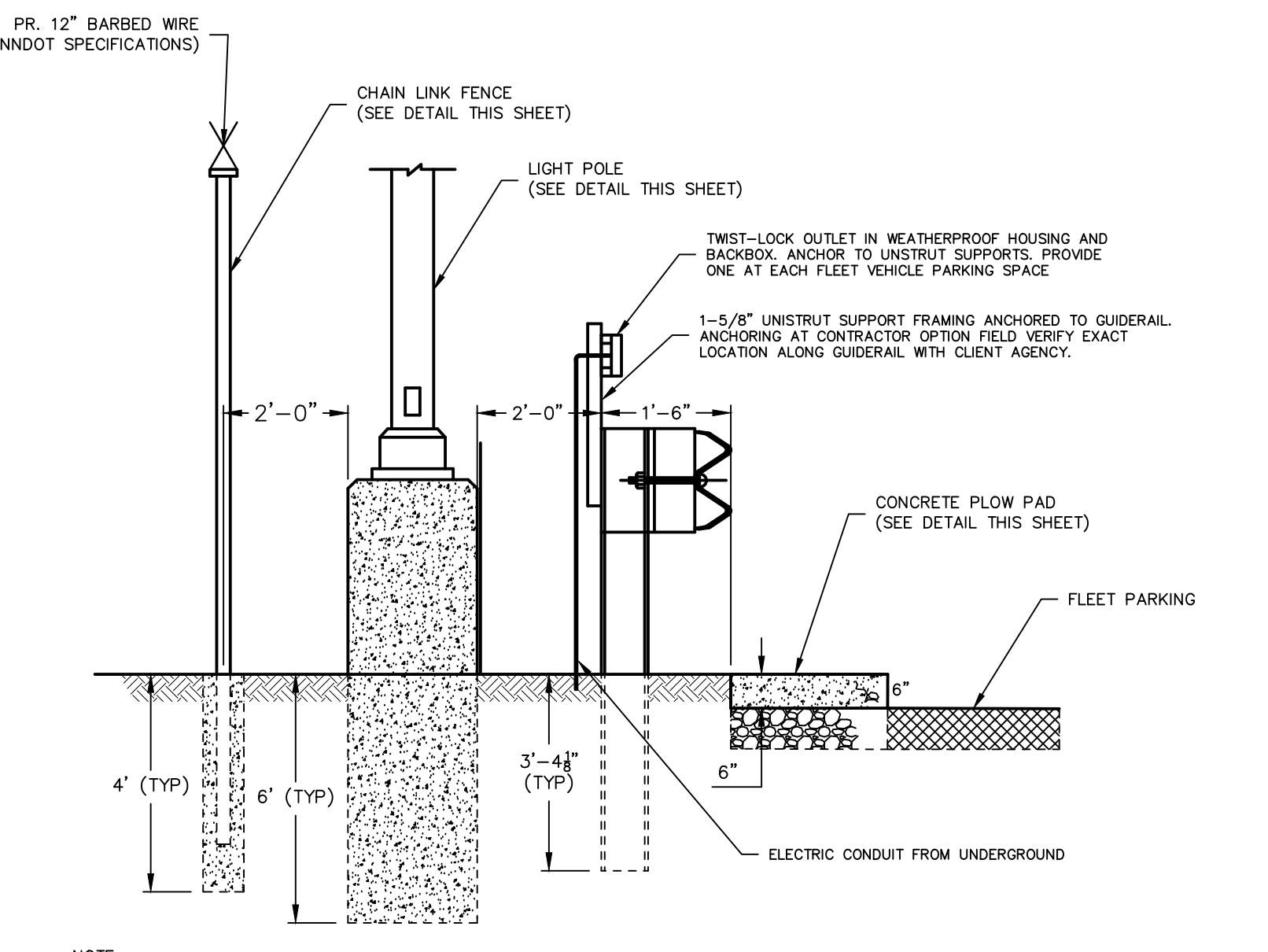
CONTRACTION JOINT



BIKE SAFE GRATE

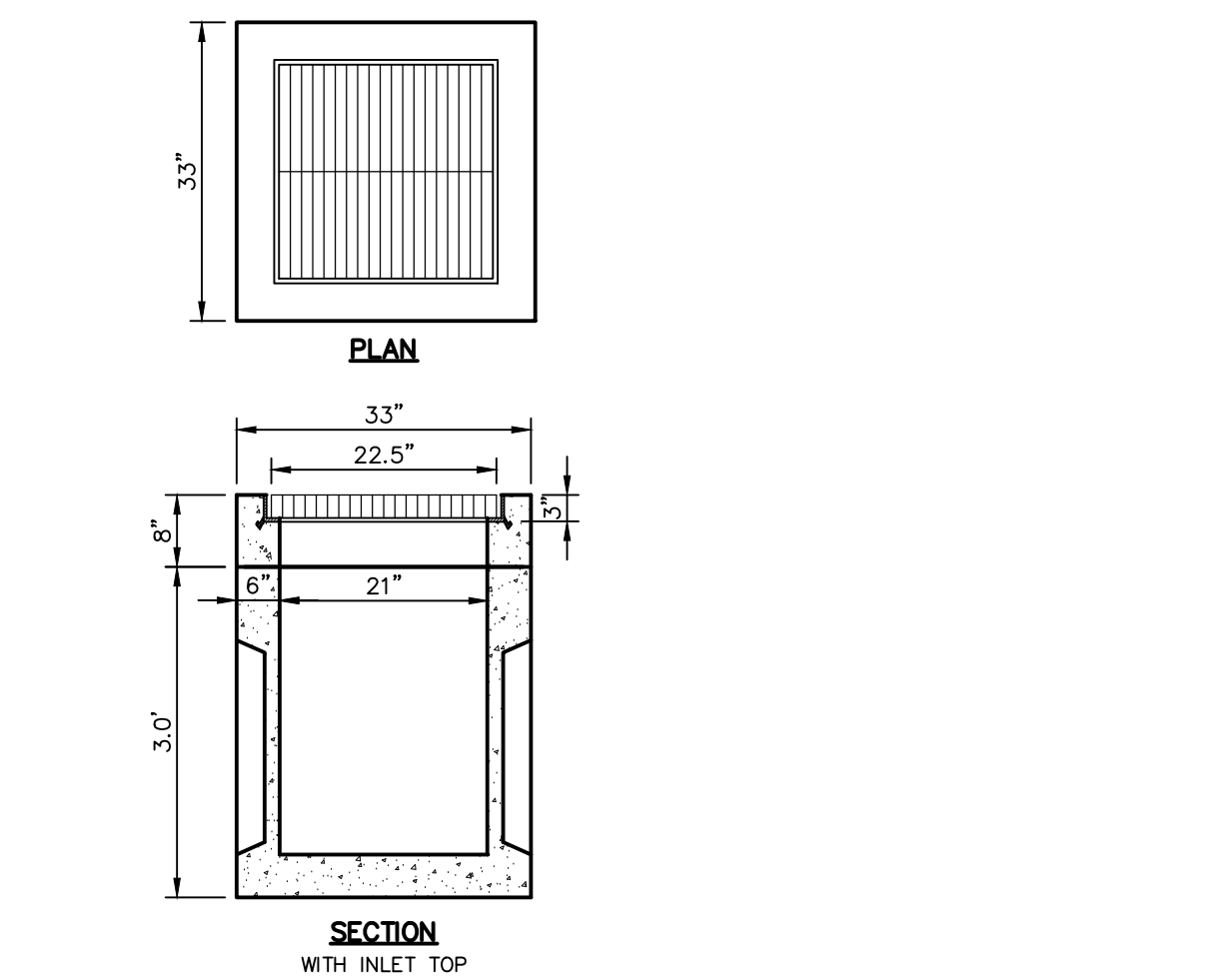


ASPHALT MILL & OVERLAY

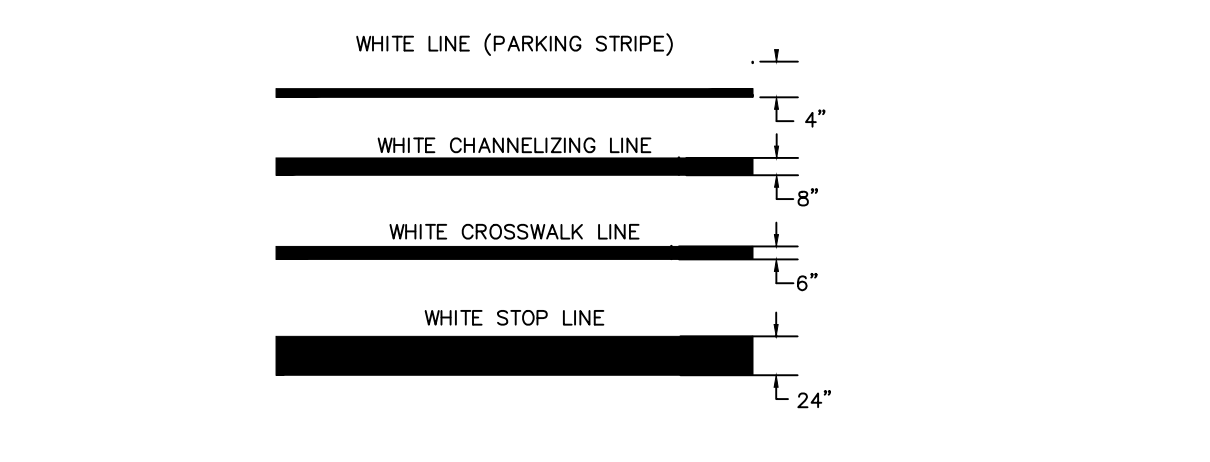


NOTE:
1. PROPOSED GUIDE RAIL SPECS. TO BE PER RC-52M TYPE 2 STRONG POST GUIDE RAIL.
2. REFERENCE CIVIL ENGINEERING PLANS FOR VARIATIONS IN THE LOCATION OF GUIDE RAIL, ELECTRICAL POST, LIGHT POLE AND FENCE.
3. ELECTRIC OUTLETS FOR EACH FLEET PARKING SPACE TO BE MOUNTED TO GUIDE RAIL. POST FOR ARCHITECTURAL DETAILS.

STANDARD GUIDERAIL/FENCING CONFIGURATION FLEET PARKING ONLY

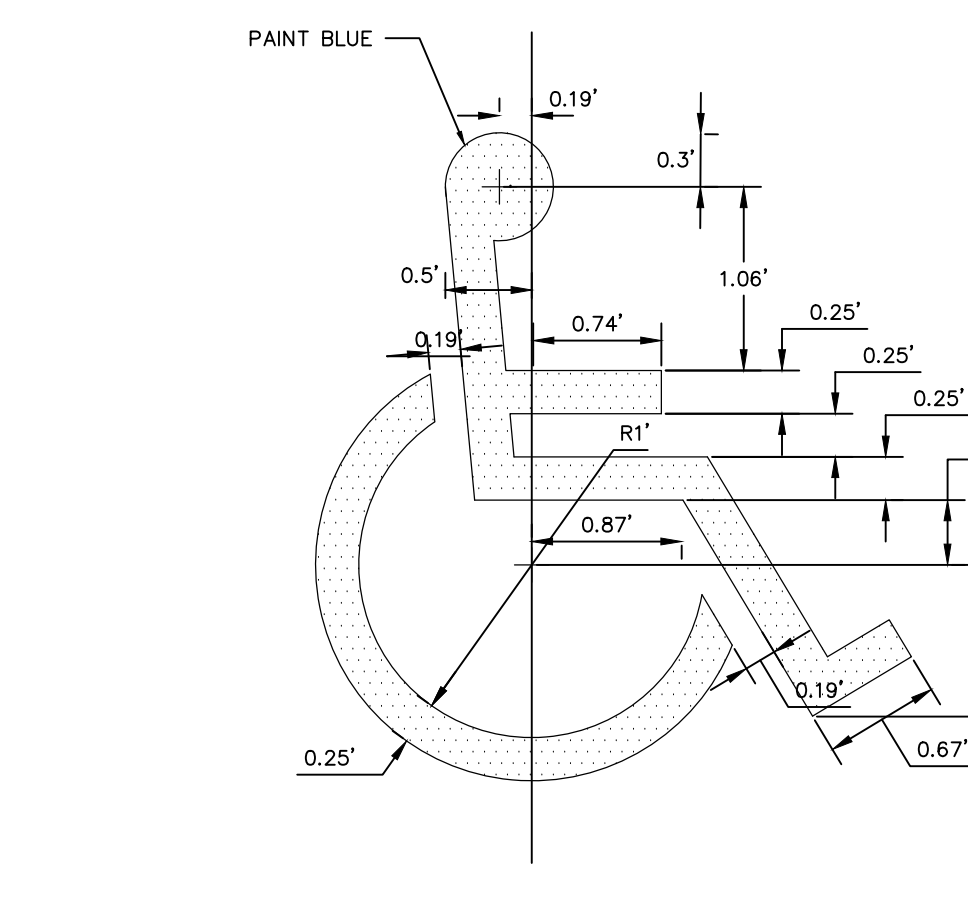


2'X2' INLET

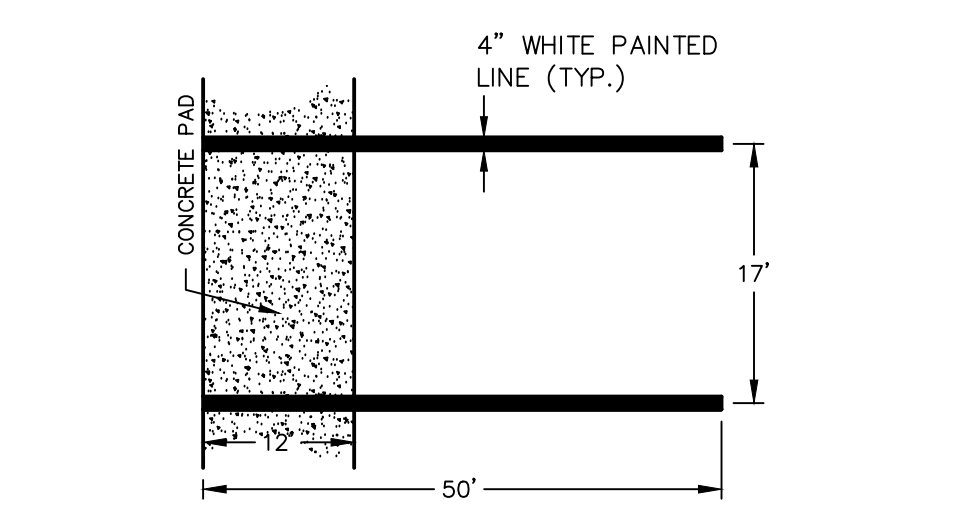


NOTE:
PARKING STRIPES SHALL BE PAVEMENT MARKING PAINT. ALL OTHER MARKINGS INCLUDING STOP BARS, ARROWS, ACCESS AISLES, HANDICAP SYMBOLS, ETC. SHALL BE HOT THERMOPLASTIC.

LINE STRIPING SPECIFICATIONS



INTERNATIONAL SYMBOL OF ACCESSIBILITY

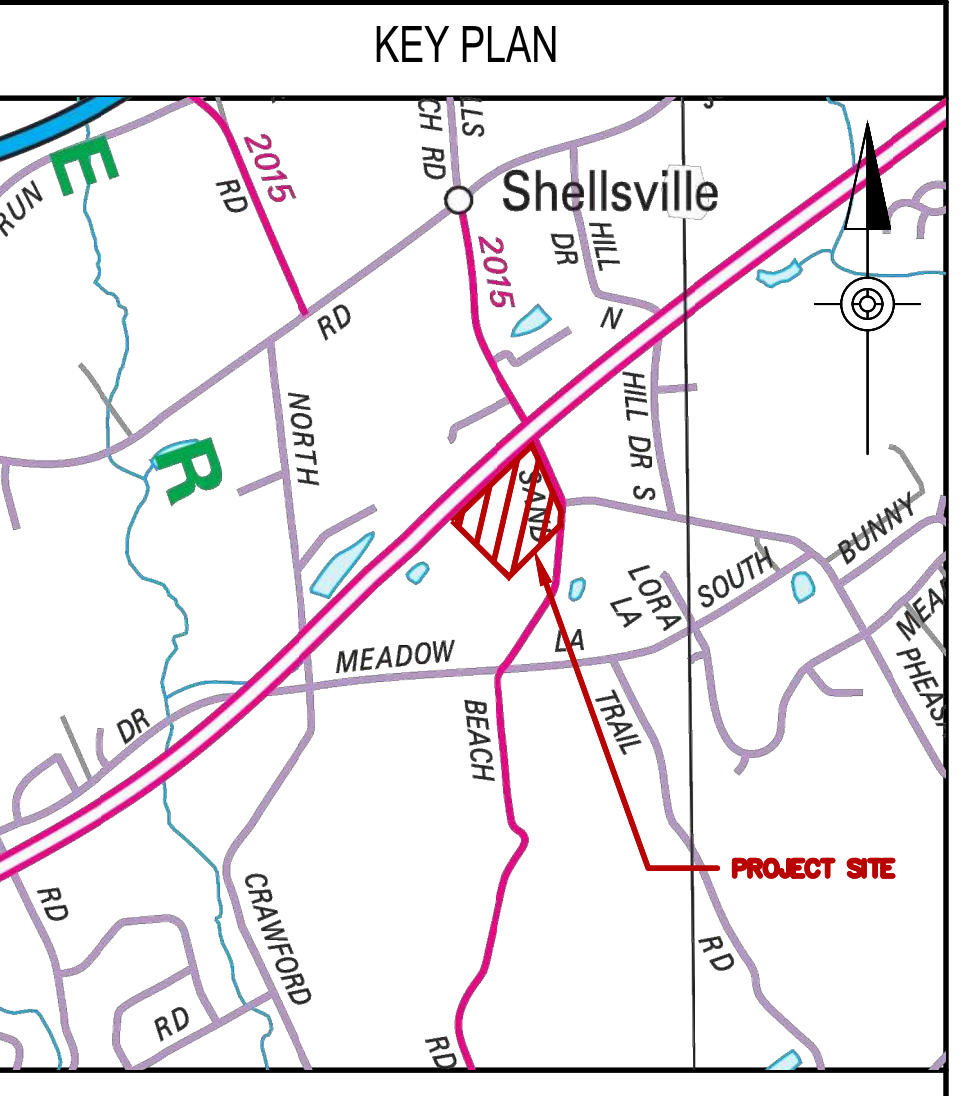


NOTES:
1. ENVIRONMENTAL LIMITATIONS: PROCEED WITH PAVEMENT MARKING ONLY ON CLEAN, DRY SURFACES AND AT A MINIMUM AMBIENT OR SURFACE TEMPERATURE OF 55 DEGS F AND MAXIMUM RELATIVE HUMIDITY OF 80%.
2. PAVEMENT-MARKING PAINT: ALKYL-RESIN TYPE (MPI #32), LEAD AND CHROMATE FREE, READY MIXED, COMPLYING WITH AASHTO M 248, TYPE N; COLORS COMPLYING WITH FS 114P-1992.
3. ALLOW PAVING TO AGE FOR A MINIMUM OF 30 DAYS BEFORE STARTING PAVEMENT MARKING.
4. APPLY PAINT WITH MECHANICAL EQUIPMENT TO PRODUCE PAVEMENT MARKINGS OF DIMENSIONS INDICATED, WITH UNIFORM, STRAIGHT EDGES. APPLY NOT LESS THAN 2 SEPARATE COATS IN ACCORDANCE WITH MANUFACTURER'S RECOMMENDED RATES TO PROVIDE A MINIMUM NET FILM THICKNESS OF 15 MILS.
5. SEE PLAN FOR ACTUAL SPACE LOCATION AND DIMENSIONS.

FLEET ONLY PARKING SPACE



ACCESSIBLE PARKING SPACE



RECORD REVISIONS

NO.	DESCRIPTION	DATE
1	PER PENNDOT MEETING DATED 11/8/23	11/8/23

COMMONWEALTH OF PENNSYLVANIA DEPARTMENT OF GENERAL SERVICES

PROJECT NO. C-0251-0061 Phase 001

PennDOT - DEVELOPMENT OF NEW STOCKPILE

8147 Alentown Blvd
Greenville, PA 17028
East Hanover Township, Dauphin County

DETAILS

DRAWN BY: ARB DATE: 2/23/24 SCALE: N.T.S.

C-9

COMMONWEALTH OF PENNSYLVANIA DEPARTMENT OF GENERAL SERVICES
 PROJECT NO. C-0251-0061 Phase 001
 PENNDOT - DEVELOPMENT OF NEW STOCKPILE
 DRAWN BY: ARB DATE: 2/23/24 SCALE: N.T.S.
 SHEET NO. C-9 OF 10