

GENERAL NOTES

1. THE WORD "REMOVE" IS DEFINED AS "DISCONNECT, REMOVE AND DISPOSE OF OFF THE INSTALLATION".
2. PLANS CREATED FROM EXISTING RECORD DRAWINGS AND FIELD VERIFICATION. CONTRACTOR SHALL VERIFY EXISTING CONDITIONS ARE CORRECT AND REPORT MAJOR DISCREPANCIES TO THE COR FOR DIRECTION. WITH THAT STATED THE PLANS ARE NOT MEANT TO REPRESENT AN EXACT MATCH OF FIELD CONDITIONS AND CONTRACTOR SHALL EXPECT MINOR ADJUSTMENTS MAY BE REQUIRED TO COMPLETE THE DEMOLITION AS PART OF THE PROJECT.
3. DISPOSE OF ALL DEBRIS CREATED BY THIS PROJECT PER ALL FEDERAL, STATE AND LOCAL CODE/REGULATIONS.
4. BREAK ROOM EXISTING FLOOR TILES ARE IDENTIFIED AS ASBESTOS CONTAINING MATERIAL (ACM). FLOOR TILE REMOVAL AND DISPOSAL REQUIRES AN ASBESTOS CONTRACTOR TO CONDUCT THAT WORK IAW STATE AND FEDERAL REGULATIONS. PROVIDE APPLICABLE PLAN AS PER FEDERAL REGULATIONS.
5. NOTIFY THE COR AND REMEDIATE ALL OTHER UNEXPECTED HAZARDS IAW THE CONTRACT AND ALL APPLICABLE FEDERAL AND STATE REGULATIONS.
6. COORDINATE ALL DEMOLITION ACTIVITIES WITH ALL OTHER DISCIPLINES.

DEMOLITION REFERENCE KEYNOTES

- 1 REMOVE DOOR AND FRAME.
- 2 REMOVE DOOR.
- 3 REMOVE ASBESTOS CONTAINING FLOOR TILE AND MASTIC.
- 4 REMOVE AND SALVAGE WATER FOUNTAIN FOR REUSE. SEE PLBG DWGS
- 5 REMOVE WATER HEATER AND SUSPENSION SHELF SYSTEM. SEE PLBG DWGS
- 6 REMOVE RESTROOM SINKS, MIRRORS, TOWEL DISPENSERS AND SOAP DISPENSERS FROM WALLS.
- 7 REMOVE URINALS.
- 8 REMOVE TOILETS.
- 9 REMOVE TOILET PARTITIONS, TO INCLUDE GRAB BARS AND TOILET PAPER DISPENSERS ATTACHED TO TOILET PARTITIONS.
- 10 FOR CEILING AREA DEMOLITION, SEE DWG A-102.
- 11 NOT USED
- 12 REMOVE AIR TRANSFER LOUVER IN WALL, SEE MECH DWGS
- 13 REMOVE EXHAUST FAN, OUTSIDE COVER TO REMAIN, SEE MECH DWGS
- 14 REMOVE WALL GYP BD FOR PLBG INSTALL. EXTENT DETERMINED BY CONTRACTOR. SEE PLBG DWGS
- 15 REMOVE ELEC PANELBOARD, SEE ELEC DWGS
- 16 REMOVE EXTERIOR MOUNTED MAILBOX AND PATCH MOUNT HOLES WITH SEALANT
- 17 REMOVE FRP PNL AND GYP BD. EXTENT DETERMINED BY CONTRACTOR. SEE PLBG DWGS FOR SANITARY CONNECTION DETAILS
- 18 REMOVE AND/OR REPLACE GRILLS. SEE PLBG DWGS

EXISTING CONSTRUCTION

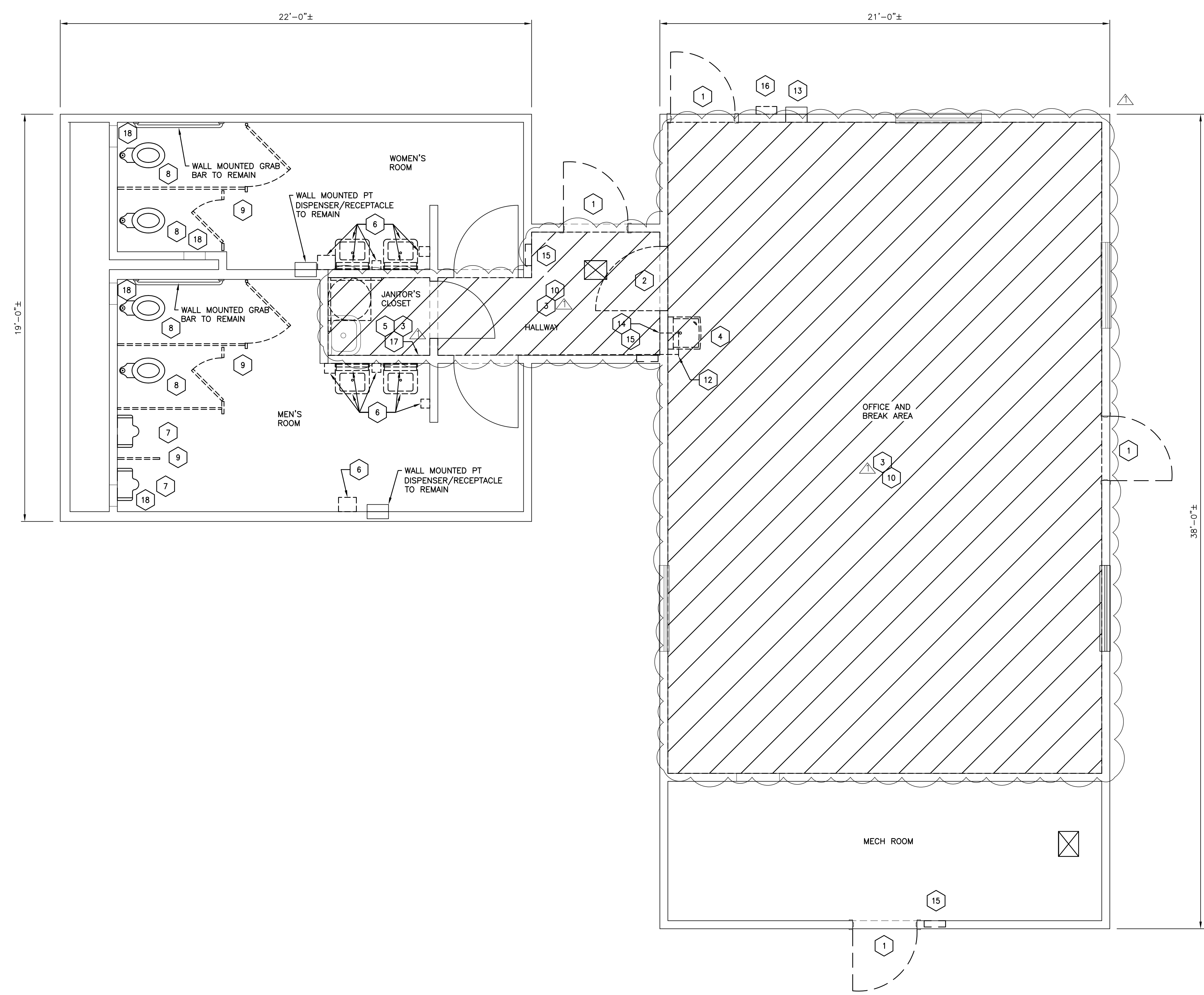
SUBFLOOR - CONCRETE SLAB
 REST ROOM FINISH FLOORING - CERAMIC TILE INSTALLED ON SLAB
 HALLWAY AND JANITOR'S CLOSET FINISH FLOORING - VCT ON SLAB
 BREAK ROOM/OFFICE FINISH FLOORING - ASBESTOS CONTAINING VCT ON SLAB
 BREAK ROOM/AREA INTERIOR WALL FINISH - PAINTED 1/2" GWB ON 2 X 4 STUDS @ 16" OC
 REST ROOM WALL FINISH - CERAMIC TILE COVERED 5/8" GWB ON 2 X 4 STUDS @ 16" OC.
 HALLWAY WALL FINISH - 5/8" GWB ON 2 X 4 STUDS @ 16" OC.
 CEILING - SUSPENDED ACOUSTICAL CEILING TILES AND GRID AND PAINTED GYPSUM BOARD
 CEILING FRAMING - PRE-FAB WOOD TRUSSES

NO.	CLARIFICATION BASED ON BIDDER QUESTIONS REVISIONS	DATE
1		7/12/2024

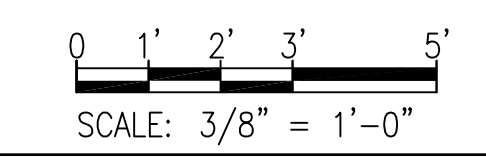
DEFENSE LOGISTICS AGENCY
 DLA INSTALLATION MANAGEMENT AT SUSQUEHANNA
 INSTALLATION MANAGEMENT DIVISION
 NEW CUMBERLAND, PA 17070-5002

REPAIRS TO BUILDING 67
 FLOOR DEMOLITION PLAN

DESIGNED BY: BPK	CHECKED BY: N/A	PROJECT NO. 4232
DRAWN BY: BPK	ARCHITECTURAL HERGENROTHER	DRAWING NO. A-101
SCALE: AS SHOWN	MECHANICAL SHARLOG	SHEET 3 OF 22
	ELECTRICAL OLSON	DATE OCT 2023
	ENERGY SPIGELMYER	



FLOOR DEMOLITION PLAN



LEGEND:

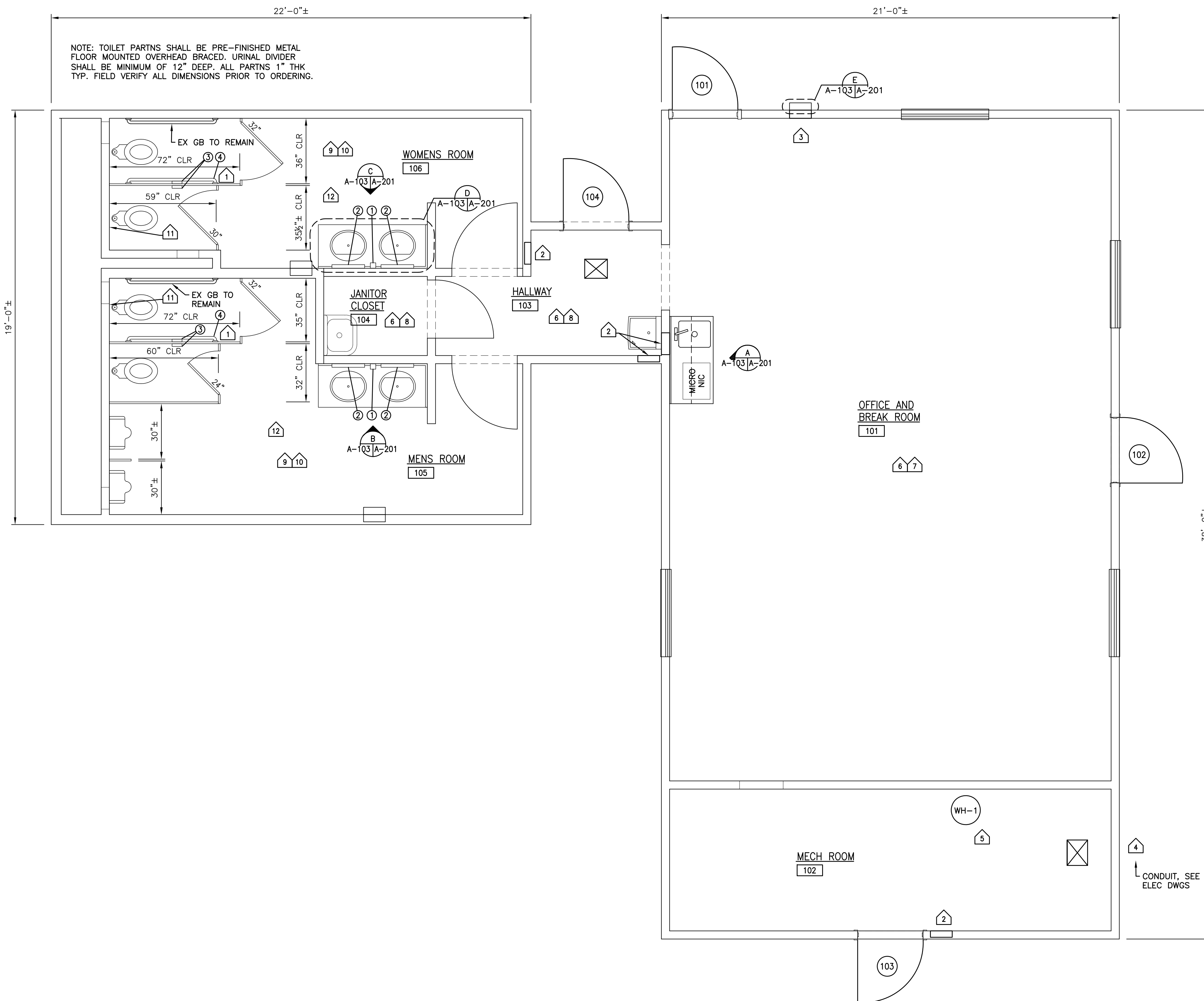
- TO BE REMOVED
- APPROX ACM TILE AREA

GENERAL NOTES

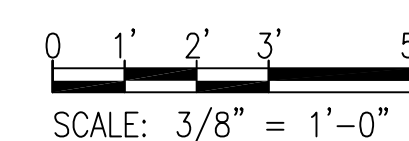
- PLANS CREATED FROM EXISTING RECORD DRAWINGS AND FIELD VERIFICATION. CONTRACTOR SHALL VERIFY EXISTING CONDITIONS ARE CORRECT AND REPORT MAJOR DISCREPANCIES TO THE COR FOR DIRECTION. THE PLANS ARE NOT MEANT TO REPRESENT AN EXACT MATCH OF FIELD CONDITIONS AND CONTRACTOR SHALL EXPECT MINOR ADJUSTMENTS MAY BE REQUIRED TO COMPLETE THE PROJECT.
- PROVIDE FLOOR MOUNTED OVERHEAD BRACED TOILET PARTITIONS
- SEE DWG A-601 FOR TOILET ACCESSORY MOUNTING HEIGHTS AND TOILET ACCESSORY BASIS OF DESIGN.
- NEW VENT PIPE(S) PENETRATE EX ROOF (SEE MECH DWGS). FLASH EX SHINGLES WATER-TIGHT USING PIPE FLASHING BOOT.

KEYNOTE REFERENCES

- 1 MOUNT NEW GRAB BARS TO TOILET PARTN AT SAME HT AND DISTANCE FROM BACK WALL AS EX WALL MOUNTED GRAB BAR.
- 2 FILL ALL VOIDS WITH R13 BLANKET INSUL, GYP BD THKNS TO MATCH EX ADJACENT GYP BD. PATCH, TAPE AND FINISH - PAINT TO MATCH.
- 3 FILL VOID WITH R13 BLANKET INSUL, GYP BD THKNS TO MATCH EX ADJACENT GYP BD. PATCH, TAPE AND FINISH - PAINT WHERE APPLICABLE. SEE DETAIL "E" FOR EXTERIOR FABRICATION
- 4 SEAL NEW 1/2" CONDUIT PENETRATION WITH SEALANT. SEE ELEC DWGS FOR DETAILS.
- 5 NEW WATER HEATER INSTALL. SEE PLBG DWGS FOR DETAILS.
- 6 INSTALL VCT AND WALL BASE.
- 7 PATCH, TAPE AND FINISH HOLES AND DEFICIENCIES IN ALL WALLS. PATCH, TAPE AND FINISH ALL HOLES IN CEILING AND ALL WALLS. INSTALL FRP WALL COVERING TO MATCH EX. FRP SALIENT CHARACTERISTICS:
 - COLOR - WHITE, TO MATCH EX
 - SURFACE TEXTURE - EMBOSSED, TO MATCH EX
 - FIRE RATING - ASTM E 84 CLASS A
 - THICKNESS - 0.075"
 - BARCOL HARDNESS - ASTM D2583 35 TYP
 - WATER ABSORPTION - ASTM D570 0.2% TYP
 - ACCESSORIES - COLOR MATCHED DIVIDERS, OUTSIDE CORNERS, INSIDE CORNERS END CAPS, AND FASTENING RIVETS WHEN USED
 - ADHESIVE - AS RECOMMENDED BY MANUFACTURER
- 8 PATCH, TAPE AND FINISH ALL HOLES IN CEILING.
- 10 PATCH ALL HOLES IN CERAMIC TILES ON WALLS AND FLOORS WITH GROUT TO MATCH EX.
- 11 PREPARE METAL SURFACE ACCESS PANELS PER SPEC 099000 AND PAINT TO MATCH EX CERAMIC WALL TILE COLOR.
- 12 STEAM CLEAN CERAMIC WALLS AND FLOORS.



PROPOSED FLOOR PLAN



NO.	CLARIFICATION BASED ON BIDDER QUESTIONS REVISIONS	7/12/2024 DATE

DEFENSE LOGISTICS AGENCY
DLA INSTALLATION MANAGEMENT AT SUSQUEHANNA
INSTALLATION MANAGEMENT DIVISION
NEW CUMBERLAND, PA 17070-5002

REPAIRS TO BUILDING 67
FLOOR PLAN

DESIGNED BY: BPK	CHECKED BY: N/A	PROJECT NO. 4232
DRAWN BY: BPK	ARCHITECTURAL HERGENROTHER	DRAWING NO. A-103
SCALE: AS SHOWN	MECHANICAL SHARLOG	SHEET 5 OF 22
	ELECTRICAL OLSON	DATE OCT 2023
	ENERGY SPIGELMYER	

DOOR SCHEDULE

NO.	DOOR				FRAME		HEAD	JAMB	SILL	LABEL	HDWR SET	REMARKS
	SIZE	MATERIAL	TYPE	GLASS	MATERIAL	TYPE						
101	3'-0"x7'-0"	STL	N	G1	STL	A	1	3	5	--	1	1, 2, 3
102	3'-0"x7'-0"	STL	N	G1	STL	A	1	3	5	--	1	1, 2, 3
103	3'-0"x7'-0"	STL	F	--	STL	A	1	3	5	--△	2	1, 2
104	3'-0"x6'-8"	STL	N	G1	STL	B	2	4	5	--	1	1, 2, 3

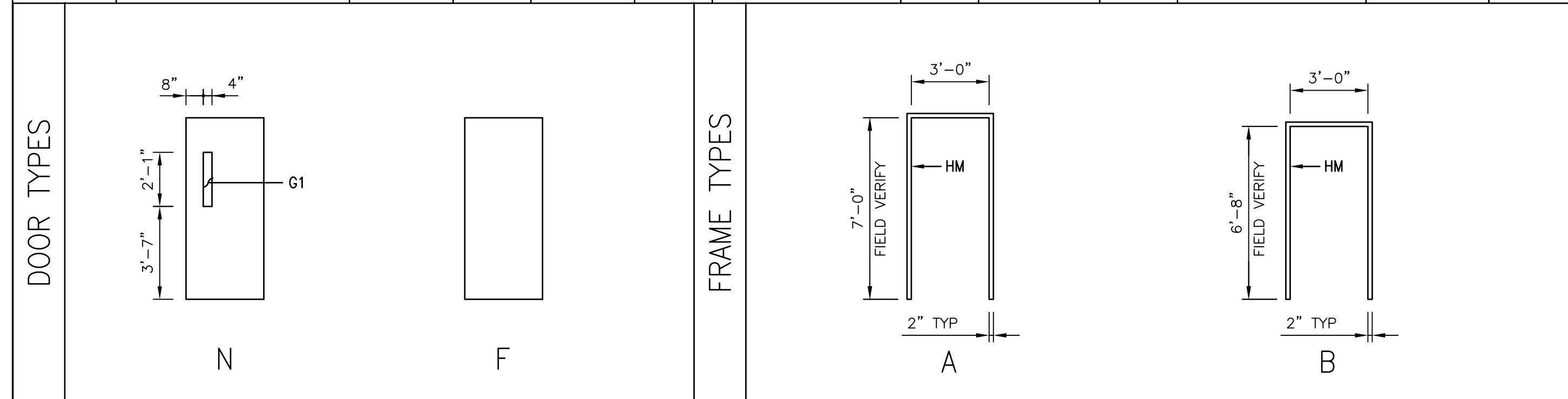
REMARKS
 1 FIELD VERIFY DOOR SIZE NOTED VERSES EXISTING WALL OPENING AND ADJUST DOOR SIZE ACCORDINGLY.
 2 INSULATED DOOR AND FRAME.
 3 INSULATED GLAZING G1 SEE GLAZING NOTE THIS DRAWING

FINISH SCHEDULE

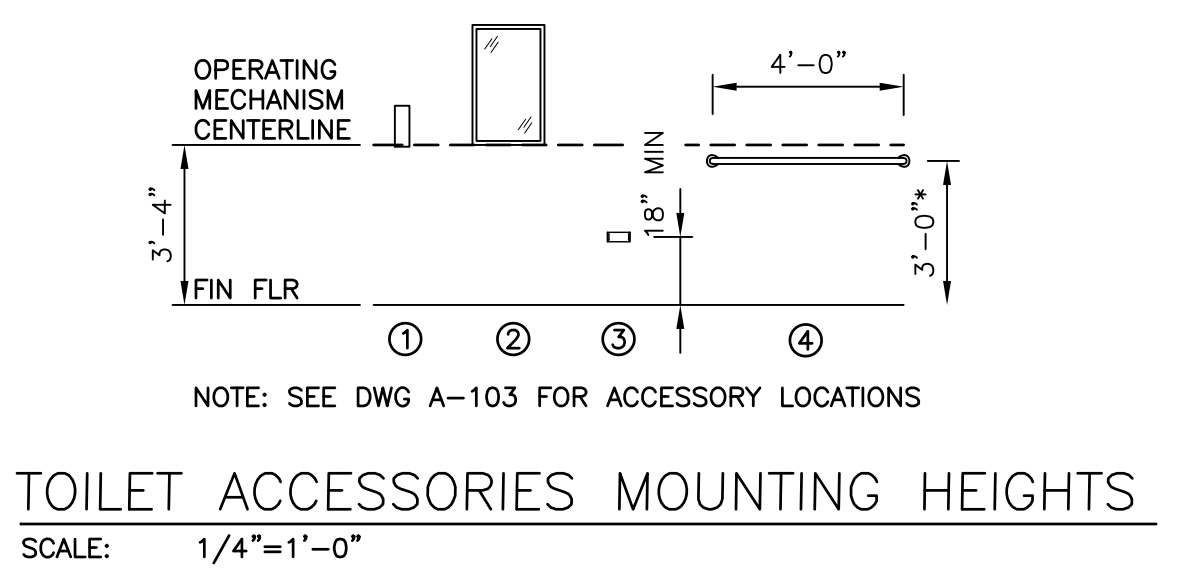
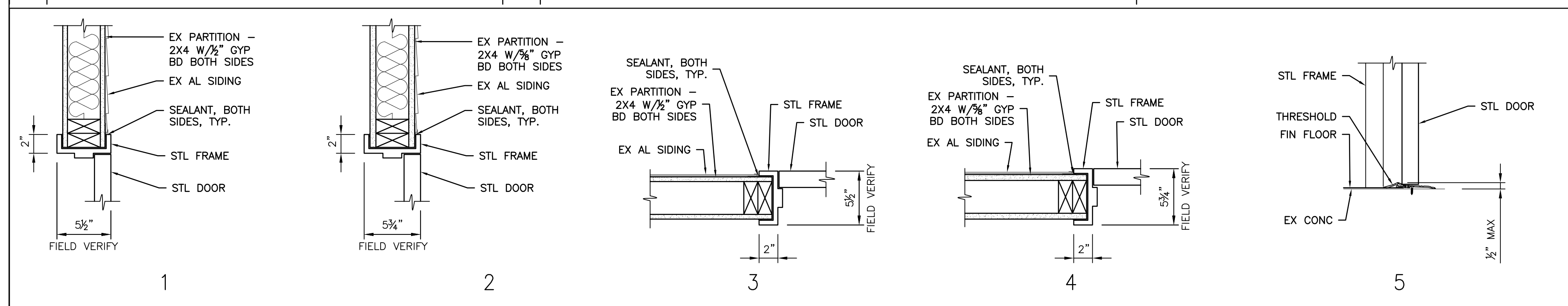
ROOM NO.	ROOM NAME	FLOOR		BASE		WALLS								CEILING			REMARKS		
		MATERIAL	FINISH	MATERIAL	FINISH	NORTH		EAST		SOUTH		WEST		MATERIAL	FINISH	HEIGHT			
						MATERIAL	FINISH	MATERIAL	FINISH	MATERIAL	FINISH	MATERIAL	FINISH						
101	OFFICE AND BREAK ROOM	EX CONC	VCT	EX GYP BD	RUBBER	EX PNT GYP BD	PNT 1	EX PNT GYP BD	PNT 1	EX PNT GYP BD	PNT 1	EX PNT GYP BD	PNT 1	EX PNT GYP BD	PNT 1	OPN TRUSS	SACT	8'-0"	PROVIDE VCT, COVE BASE AND SACT. PATCH, TAPE, FINISH AND PNT ALL WALLS.
102	MECHANICAL ROOM	EX CONC	E.T.R.	EX GYP BD	E.T.R.	EX PNT GYP BD	E.T.R.	EX PNT GYP BD	E.T.R.	EX PNT GYP BD	E.T.R.	EX PNT GYP BD	E.T.R.	EX PNT GYP BD	E.T.R.	OPN TRUSS	E.T.R.	E.T.R.	PATCH, TAPE AND FINISH ALL GYP BD REPAIRS.
103	HALLWAY	EX CONC	VCT	EX GYP BD	RUBBER	EX PNT GYP BD	PNT 1	EX PNT GYP BD	PNT 1	EX PNT GYP BD	PNT 1	EX PNT GYP BD	PNT 1	EX PNT GYP BD	PNT 1	OPN TRUSS	PNT 2	7'-6"	PROVIDE VCT, COVE BASE. PATCH, TAPE, FINISH AND PNT ALL WALLS AND CEILING.
104	JANITOR	EX CONC	VCT	EX GYP BD	RUBBER	EX PNT GYP BD/FRP PNL	PNT 1	EX PNT GYP BD	PNT 1	EX PNT GYP BD/FRP PNL	PNT 1/FRP PNL	EX PNT GYP BD/FRP PNL	PNT 1	EX PNT GYP	PNT 2	8'-0"			PROVIDE VCT, COVE BASE. PATCH, TAPE, FINISH AND PNT GYP BD WALLS AND CEILING. FRP PNL ON SOUTH WALL
105	MEN'S ROOM	EX CONC	E.T.R.	EX CT	E.T.R.	EX CT	E.T.R.	EX CT	E.T.R.	EX CT	E.T.R.	EX CT	E.T.R.	EX. PNT GYP	PNT 2	8'-0"			PATCH, TAPE, FINISH AND PNT CEILING.
106	WOMEN'S ROOM	EX CONC	E.T.R.	EX CT	E.T.R.	EX CT	E.T.R.	EX CT	E.T.R.	EX CT	E.T.R.	EX CT	E.T.R.	EX. PNT GYP	PNT 2	8'-0"			PATCH, TAPE, FINISH AND PNT CEILING.

GENERAL NOTES

- FINISH COLORS, TYPES, STYLES, ETC. TO BE SELECTED BY THE USER. ALL FINISH SAMPLES MUST BE SUBMITTED PRIOR TO SELECTION SO ALL FINISHES CAN BE COORDINATED AND SELECTED AT ONE TIME.
- SEE INTERIOR FINISH SCHEDULE, THIS DWG, FOR FULL FINISH LIST.



GLAZING NOTE:
 G1 - TWO PANES OF GLASS SEPARATED BY DHYDRATED AIRSPACE FILLED WITH ARGON GAS AND HERMETICALLY SEALED, CONFORMING TO ASTM E2190. 1/2" THICK TEMPERED (TINTED HEAT STRENGTHENED) GLASS (OUTTER PANE), 1/2" AIRSPACE, 1/2" TOTAL THICKNESS LAMINATED GLASS (INNER LITE), 3/4" TOTAL THICKNESS.



TOILET ACCESSORIES SCHEDULE

MARK	ITEM	BASIS OF DESIGN MODEL #
①	SURFACE MOUNTED AUTOMATIC LIQUID SOAP DISPENSER (SD)	GFE CONTRACTOR INSTALLED
②	FIXED TILT MIRROR 18X30 (TM)	BRADLEY 740-018300 OR EQ
③	SURFACE MOUNTED SINGLE ROLL TOILET TISSUE DISPENSER (TTD)	A5195 PER SPEC 102813
④	48" LG GRAB BAR	A5109 PER SPEC 102813

- NOTES:
 1. TOILET ACCESSORIES BASIS OF DESIGN MODEL NUMBERS TAKEN FROM SPEC 102813 OR "AMERICAN SPECIALTIES, INC" FOR ESTABLISHING QUALITY AND TYPE DESIRED.
 2. *DIMENSION SHOWN FOR TP GRAB BAR IS APPROX. MOUNT SAME HEIGHT AND DISTANCE FROM BACK WALL AS EX WALL-MOUNTED GRAB BAR TO REMAIN.

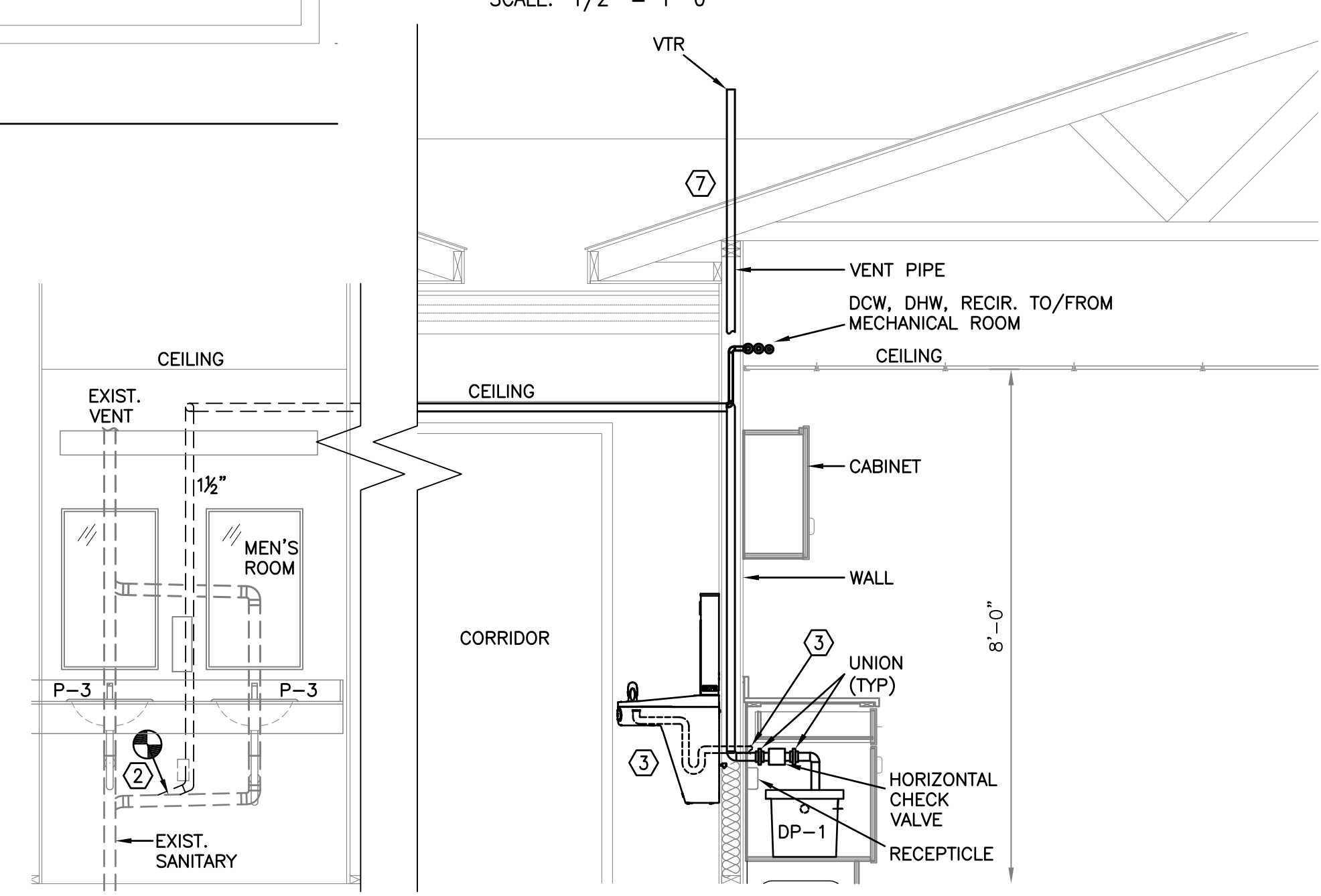
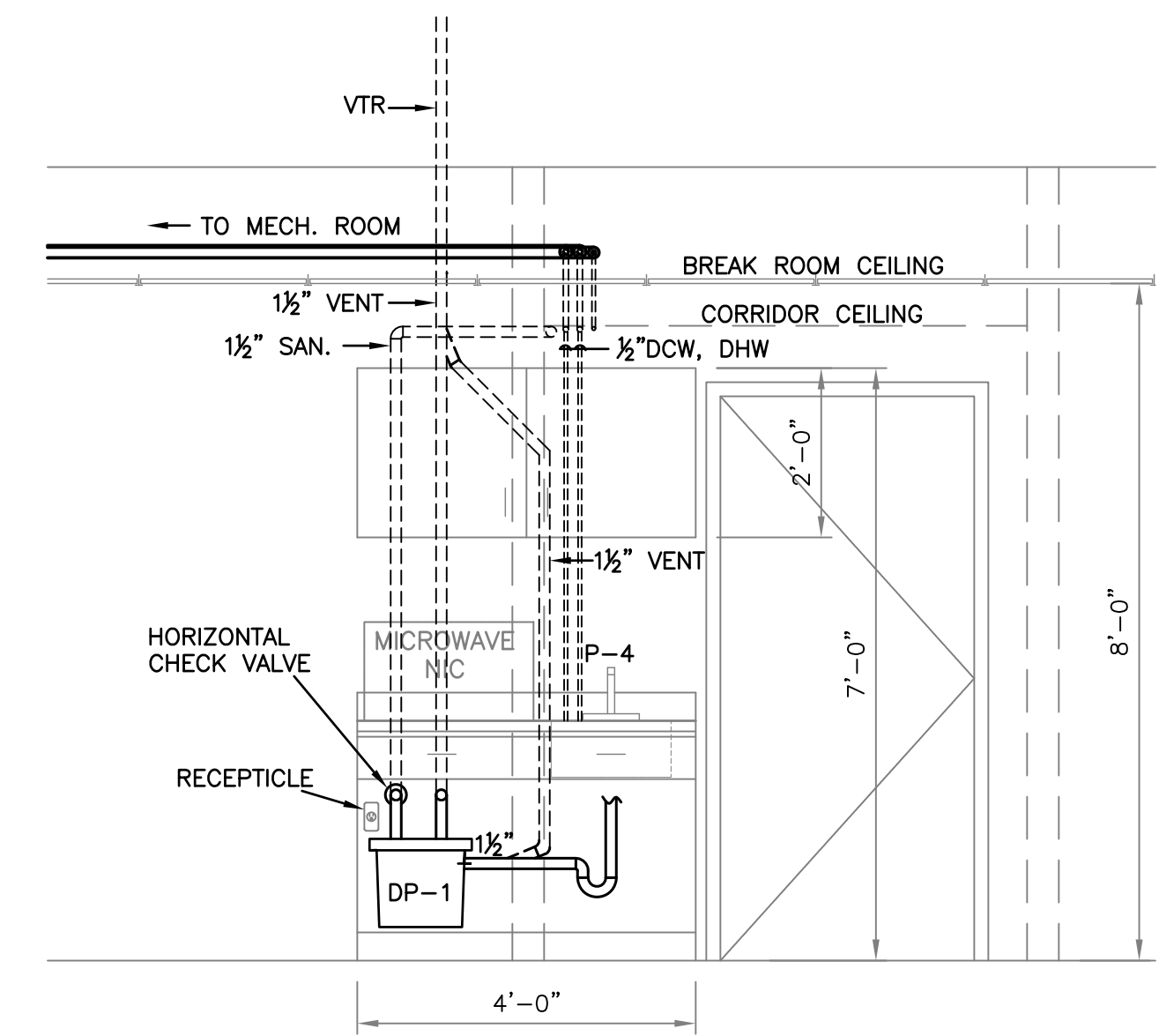
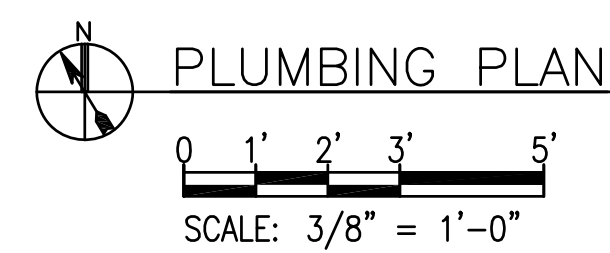
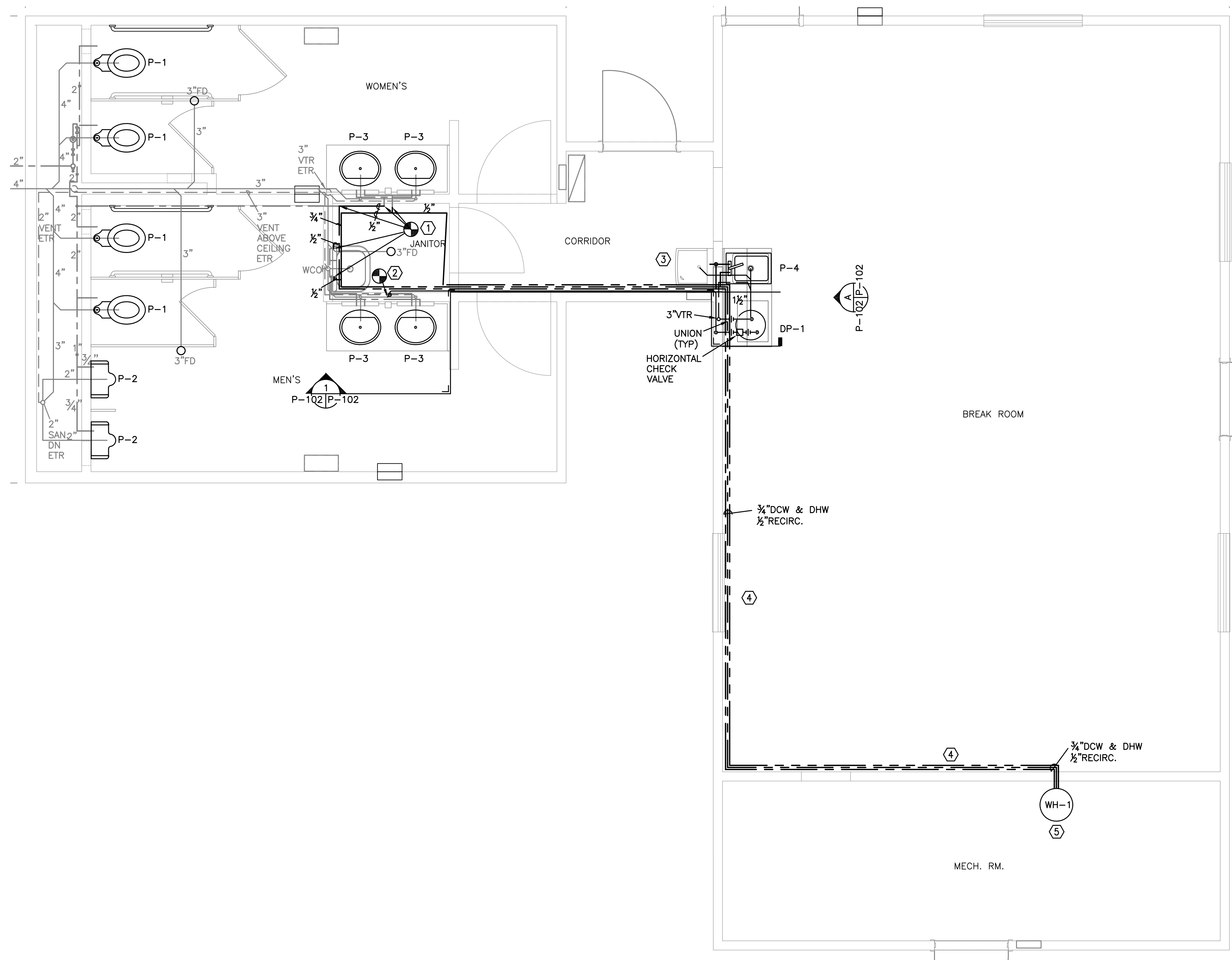
INTERIOR FINISH SCHEDULE

INTERIOR FINISHES	MANUFACTURER	COLOR	PAINT SHEEN
PNT 1	SHERWIN WILLIAMS OR EQ	TO BE SELECTED AND APPROVED BY THE GOVT	EGGSHELL
PNT 2	SHERWIN WILLIAMS OR EQ	TO BE SELECTED AND APPROVED BY THE GOVT	EGGSHELL
VCT	AHF FLOORING OR EQ	TO BE SELECTED AND APPROVED BY THE GOVT	N/A
COVE BASE	JOHNSONITE OR EQ	TO BE SELECTED AND APPROVED BY THE GOVT	N/A
DOOR FRAME PNT	SHERWIN WILLIAMS OR EQ	TO BE SELECTED AND APPROVED BY THE GOVT	SEMI-GLOSS
DOOR PNT	SHERWIN WILLIAMS OR EQ	TO BE SELECTED AND APPROVED BY THE GOVT	SEMI-GLOSS
TOILET PARTITIONS	ASI GLOBAL PARTITIONS OR EQ	TO BE SELECTED AND APPROVED BY THE GOVT	N/A
PLAM CABINETS	FORMICA OR EQ	TO BE SELECTED AND APPROVED BY THE GOVT	N/A
SOLID SURFACE MATERIAL	MEGANITE OR EQ	TO BE SELECTED AND APPROVED BY THE GOVT	N/A
RESTROOM SOLID SURFACE MATERIAL	MEGANITE OR EQ	TO BE SELECTED AND APPROVED BY THE GOVT	N/A
.090 FRP PNL	GLASLINER OR EQ	WHITE	N/A
FRP PNL TRIM TO MATCH	GLASLINER OR EQ	WHITE	N/A

DESIGNED BY: BPK	CHECKED BY: N/A	PROJECT NO. 4232
DRAWN BY: BPK	CIVIL ARCHITECTURAL HERGENROTHER	DRAWING NO. A-601
SCALE: AS SHOWN	ELECTRICAL SHARLOG	SHEET 8 OF 22
	ENERGY SPIGELMYER	DATE OCT 2023

DEFENSE LOGISTICS AGENCY
 DLA INSTALLATION MANAGEMENT AT SUSQUEHANNA
 INSTALLATION MANAGEMENT DIVISION
 NEW CUMBERLAND, PA 17070-5002

REPAIRS TO BUILDING 67
 DOOR AND FINISH SCHEDULE



KEY NOTES

- ① CONNECTION POINT FOR DCW, DHW.
- ② CONNECTION POINT FOR PUMPED SANITARY.
- ③ RE-INSTALL EXISTING WATER COOLER PER MANUFACTURES INSTRUCTIONS. INTEGRATE DRAIN WITH BREAK ROOM SINK DRAIN/DP-1.
- ④ INSTALL DCW, DHW AND HOT WATER RECIRC. PIPING ABOVE DROP CEILING BELOW ROOF RAFTERS. PIPING MUST BE INSULATED.
- ⑤ SEE HOT WATER DETAIL ON DRAWING P-601. PIPING MUST BE INSULATED.
- ⑥ INSTALL PUMPED SANITARY, DCW, DHW AND HOT WATER RECIRC. PIPING BELOW CEILING IN CORRIDOR INTO JANITOR'S CLOSET. DO NOT INSULATE PIPING.
- ⑦ SEE NOTE 4 ON DRAWING A-103 FOR VENT PIPE PENETRATIONS.

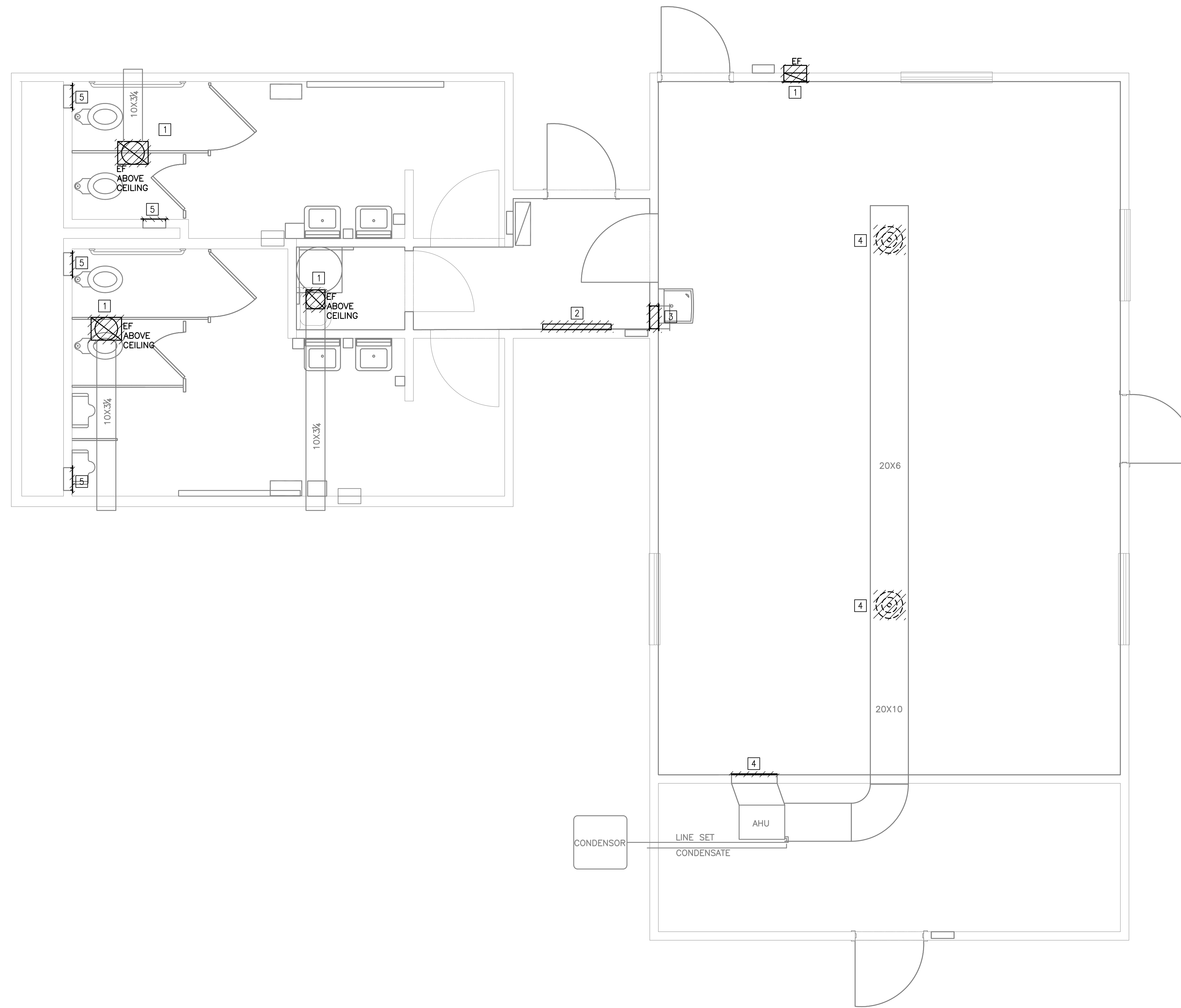
GENERAL PLUMBING NOTES

1. THE LOCATIONS OF PLUMBING FIXTURES, PIPING, SEWER, VENTS, ETC. SHOWN ON THE DRAWINGS IS APPROXIMATE AND IS NOT INTENDED TO SHOW EXACT LOCATIONS. CHECK AND VERIFY ALL DIMENSIONS AND EXISTING CONDITIONS AT THE SITE. PROVIDE ALL NECESSARY OPENINGS, FIXTURES SUPPORTS, PLUMBING, VENTING, OFFSETS FITTINGS FOR A COMPLETE INSTALLATION.
2. ALL NEW PIPING MUST BE INSULATED. USE FIBERGLASS WITH VAPOR BARRIER JACKET MINIMUM 1" THICK OR A CLOSED CELL TYPE INSULATION MINIMUM 1" THICK.
3. INSTALL ALL EQUIPMENT AND MATERIALS IN STRICT ACCORDANCE WITH RESPECTIVE MANUFACTURER'S WRITTEN INSTRUCTIONS.
4. COORDINATE PLUMBING WORK WITH THE WORK OF ALL OTHERS TRADES. REWORK DUE TO THE LACK OF COORDINATION IS THE RESPONSIBILITY OF THE CONTRACTOR.
5. ALL DIMENSIONS AND PIPE SIZES ARE IN INCHES, UNLESS NOTED OTHERWISE.
6. UNLESS OTHERWISE NOTED, ALL PLUMBING PIPING TO BE PROVIDED AS SCHEDULE L COPPER WITH SWEAT FITTINGS. GROOVED PIPE AND FITTINGS WILL NOT BE ACCEPTED.
7. PATCH ALL OPENINGS IN BUILDING CONSTRUCTION WHERE PLUMBING FIXTURES, PIPING, AND OTHER EQUIPMENT IS REMOVED. PATCHING MATERIAL TO MATCH THE SURROUNDING CONSTRUCTION IN-KIND.
8. SEAL ALL WALL, FLOOR AND CEILING PENETRATIONS.
9. WORK TO BE PERFORMED IN ACCORDANCE WITH UFC, PA UNIFORM BUILDING CODES, IPC, NEC AND NFPA.

NO.	CLARIFICATION BASED ON BIDDER QUESTIONS REVISIONS	7/12/2024 DATE
-----	---	----------------

DEFENSE LOGISTICS AGENCY
 DLA INSTALLATION MANAGEMENT AT SUSQUEHANNA
 INSTALLATION MANAGEMENT DIVISION
 NEW CUMBERLAND, PA 17070-5002
 REPAIRS TO BUILDING 67

PLUMBING PLAN		
DESIGNED BY: AJZ	CHECKED BY: N/A	PROJECT NO. 4232
DRAWN BY: AJZ	CIVIL ARCHITECTURAL: HERGENROTHER	DRAWING NO. P-102
SCALE: AS NOTED	MECHANICAL: SHARLOG	SHEET 13 OF 22
	ELECTRICAL: OLSON	DATE OCT 2023
	ENERGY: SPIGELMYER	

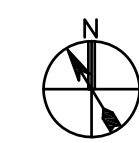


DEMOLITION KEY NOTES [7]

- 1 DEMOLISH EXHAUST FAN AND GRILLE.
- 2 DEMOLISH ELECTRIC HEATER.
- 3 DEMOLISH TRANSFER DUCT AND GRILLES.
- 4 DEMOLISH DIFFUSERS AND GRILLE.
- 5 DEMOLISH GRILLE.

HVAC DEMOLITION NOTES

- 2. PROVIDE ALL CUTTING AND PATCHING NECESSARY WHERE EQUIPMENT IS REMOVED.
- 3. UNLESS NOTED OTHERWISE, MATERIALS AND EQUIPMENT REMOVED SHALL BECOME THE PROPERTY OF THE CONTRACTOR AND SHALL BE LEGALLY DISPOSED OF OFF THE SITE.
- 4. DEMOLITION, CUTTING, AND PATCHING WHERE INDICATED ON THE DRAWINGS IS INTENDED ONLY AS A GUIDELINE FOR UNDERSTANDING THE SCOPE OF WORK AND TO BE USED ONLY FOR THAT PURPOSE.
- 5. ALL DIMENSIONS ARE FROM EXISTING DRAWINGS FOR QUANTITY TAKEOFFS ONLY, FIELD VERIFY ACTUAL DIMENSIONS.
- 6. PROVIDE TEMPORARY PROTECTION FOR SENSORS AS NECESSARY DURING REMOVAL AND REINSTALLATION OF EQUIPMENT.
- 7. PROVIDE TEMPORARY DUST PROTECTION FOR AREAS WHEN WORK IN ADJACENT SPACES IS BEING DONE.
- 8. CONTRACTOR TO PROTECT WALLS AND FLOOR DURING CONSTRUCTION. DAMAGED AREAS AS A RESULT OF CONTRACTOR'S WORK SHALL BE REPAIRED OR REPLACED AS DIRECTED BY THE COR AT THE CONTRACTOR'S EXPENSE.
- 9. COORDINATE WITH ALL OTHER DISCIPLINES TO COMPLETE SCOPE AND CONSTRUCT A COMPLETE, FUNCTIONAL SYSTEM.



MECHANICAL PLAN – DEMOLITION

0 1' 2' 3' 5'
SCALE: 3/8" = 1'-0"

NO.	CLARIFICATION BASED ON BIDDER QUESTIONS REVISIONS	DATE
7		7/12/2024

DEFENSE LOGISTICS AGENCY
DLA INSTALLATION MANAGEMENT AT SUSQUEHANNA
INSTALLATION MANAGEMENT DIVISION
NEW CUMBERLAND, PA 17070-5002

REPAIRS TO BUILDING 67

MECHANICAL PLAN – DEMOLITION

DESIGNED BY: AJZ	CHECKED BY: N/A	PROJECT NO. 4232
DRAWN BY: AJZ	ARCHITECTURAL: HERGENROTHER	DRAWING NO. M-101
SCALE: AS NOTED	MECHANICAL: SHARLOG	SHEET 15 OF 22
	ELECTRICAL: OLSON	DATE OCT 2023
	ENERGY: SPIGELMYER	