

three inch = one foot
one and one half inch = one foot
one inch = one foot
one quarter inch = one foot
three eighths inch = one foot
one eighth inch = one foot
2/8/2023 4:58:38 PM

NFPA KITCHEN CORRIDOR REQUIREMENTS

18.3.2.5.3 Within a smoke compartment, where residential or commercial cooking equipment is used to prepare meals for 30 or fewer persons, one cooking facility shall be permitted to be open to the corridor, provided that all of the following conditions are met: (1) The portion of the health care facility served by the cooking facility is limited to 30 beds and is separated from other portions of the health care facility by a smoke barrier constructed in accordance with 18.3.7.3, 18.3.7.6, and 18.3.7.8. (2) The cooktop or range is equipped with a range hood of a width at least equal to the width of the cooking surface, with grease baffles or other grease-collecting and clean-out capability. The hood systems have a minimum airflow of 500 cfm (14,000 L/min). (3) The hood systems that are not ducted to the exterior additionally have a charcoal filter to remove smoke and odor. (4) The cooktop or range complies with all of the following: (a) The cooktop or range is protected with a fire suppression system listed in accordance with ANSI/UL 300, Standard for Fire Testing of Fire Extinguishing Systems for Protection of Commercial Cooking Equipment, or is tested and meets all requirements of UL 300A, Extinguishing System Units for Residential Range Top Cooking Surfaces, in accordance with the applicable testing document's scope. (b) A manual release of the extinguishing system is provided in accordance with Section 10.5.5 of NFPA 96. (c) An interlock is provided to turn off all sources of fuel and electrical power to the cooktop or range when the suppression system is activated. (d) The use of solid fuel for cooking is prohibited. (e) Deep-fat frying is prohibited. (f) Portable fire extinguishers in accordance with NFPA 96 are located in all kitchen areas. (g) A switch meeting all of the following is provided: (i) A locked switch, or a switch located in a restricted location, is provided within the cooking facility that deactivates the cooktop or range.

b) The switch is used to deactivate the cooktop or range whenever the kitchen is not under staff supervision. c) The switch is on a timer, not exceeding a 120-minute capacity, that automatically deactivates the cooktop or range, independent of staff action. Procedures for the use, inspection, testing, and maintenance of the cooling equipment are in accordance with Chapter 11 of NFPA 96 and the manufacturer's instructions are followed. Not less than two AC-powered photoelectric smoke alarms will battery backup, interconnected in accordance with 9.6.2.10.5, and equipped with a silence feature are located not closer than 20 ft (6.1 m) and not further than 25 ft (7.6 m) from the cooktop or range. The smoke alarms required by 18.5.2.5.3(1-3) are permitted to be located outside the kitchen area where such placement is necessary for compliance with the 20 ft (7.6 m) minimum distance criterion. A single system smoke detector is permitted to be installed in lieu of the smoke alarms required by 18.5.2.5.5(11), provided the following criteria are met: (a) The detector is located not closer than 20 ft (6.1 m) and not further than 25 ft (7.6 m) from the cooktop or range. (b) The detector is permitted to initiate a local audible alarm signal only. (c) The detector is not required to initiate a building-wide occupant notification signal. (d) The detector is not required to notify emergency forces. (e) The local audible signal initiated by the detector is permitted to be silenced and reset by a button on the detector or by a switch installed within 10 ft (3.0 m) of the system smoke detector. System smoke detectors that are required to be installed in corridors or spaces open to the corridor by other sections of this chapter are not used to meet the requirements of 18.5.2.5.3(11) and are located not closer than 25 ft (7.6 m) to the cooktop or range.

CODE REQUIREMENTS

PUBLIC BUILDINGS AMENDMENT ACT OF 1988 AND OMB CIRCULAR A-119
APPLICABLE CODES:
- APPLICABLE VA DIRECTIVES, AND DESIGN MANUALS
- INTERNATIONAL BUILDING CODE 2018 ("ONLY WHEN SPECIFICALLY REFERENCED")
- INTERNATIONAL MECHANICAL CODE 2018
- INTERNATIONAL FUEL GAS CODE 2018
- INTERNATIONAL FIRE CODE 2018
- INTERNATIONAL ENERGY CONSERVATION CODE 2018
- INTERNATIONAL PLUMBING CODE 2018
- NFPA 70-2014, NATIONAL ELECTRICAL CODE
- INTERNATIONAL FIRE CODE 2018
- INTERNATIONAL WILDLAND - URBAN INTERFACE CODE 2009
- INTERNATIONAL PERFORMANCE CODE FOR BUILDINGS AND FACILITIES 2018
- ARCHITECTURAL BARRIERS ACT ACCESSIBILITY STANDARDS (ABAAS)
- VA BARRIER FREE DESIGN STANDARD 2017

APPLICABLE CODES (CONTINUED):
- LIFE SAFETY CODE NFPA 101 (2018)
- HEALTH CARE FACILITIES NFPA 99-2018
- NATIONAL FIRE CODES, WITH THE EXCEPTION OF NFPA 5000 AND NFPA 9000
- 2018 EDITION - FACILITY GUIDELINES INSTITUTE FOR DESIGN AND CONSTRUCTION OF HEALTH CARE FACILITIES
- AIR CONDITIONING AND VENTILATING SYSTEMS, (NFPA 90A-2018)
- VA SEISMIC DESIGN REQUIREMENTS, H-18-4
- ASME BOILER AND PRESSURE VESSEL CODE
- ASME CODE FOR PRESSURE PIPING
- ARCHITECTURAL BARRIERS ACT ACCESSIBILITY STANDARDS (ABAAS) INCLUDING VA SUPPLEMENT, BARRIER FREE DESIGN GUIDE (PG-18-13)
- ENERGY POLICY ACT OF 2005 (EPAct)
- DOE INTERMEDIATE FINAL RULE: ENERGY CONSERVATION STANDARDS FOR NEW FEDERAL, COMMERCIAL AND MULTI-FAMILY HIGH-RISE RESIDENTIAL BUILDINGS AND NEW LOW-RISE RESIDENTIAL BUILDINGS, 10 CFR PARTS 433, 434 AND 435
- FEDERAL LEADERSHIP IN HIGH PERFORMANCE AND SUSTAINABLE BUILDINGS: MEMORANDUM OF UNDERSTANDING (MOU)
- VENTILATION FOR ACCEPTABLE INDOOR AIR QUALITY - ASHRAE STANDARD 61.1-2004

Table with columns for code type and requirements. Includes sections for Building Occupancy Classification, Building Area, Fire Suppression System, Occupant Exit, and Interior Finishes.

FIRE RATINGS

Table with columns for Construction Type, Building Elements, Hours, and UL Design #. Lists various building elements like structural frame, bearing walls, floor construction, etc.

DRAWING LIST

Table listing drawing numbers and sheet names. Includes categories like General, Life Safety, Architectural, and Fire Ratings.

PRINTS OF THIS DRAWING SHALL NOT BE USED FOR ANY PURPOSE WHATSOEVER WITHOUT THE SEAL AND SIGNATURE OF THE PROFESSIONAL ENGINEER

CONSULTANT: ARRAY architects and Gordon. Includes contact information for both firms.

ENGINEER OF RECORD: MILLER-REMICK LLC PROFESSIONAL ENGINEER. Includes company logo and contact details.

Office of Construction and Facilities Management, U.S. Department of Veterans Affairs.

Drawing Title: GENERAL INFORMATION, CODE REQUIREMENTS, AND DRAWING LIST. Includes an 'Approved:' field.

Phase: BID DOCUMENTS

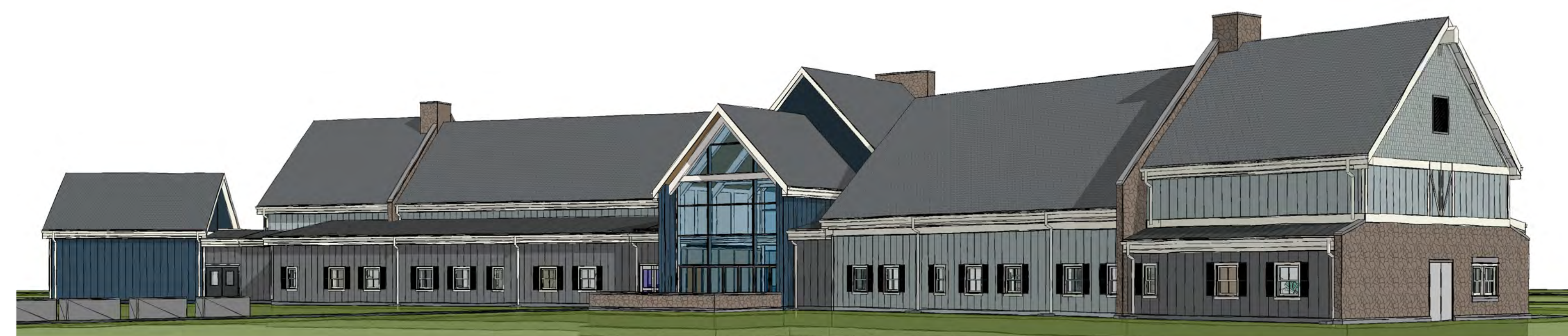
Project Title: CONSTRUCT NEW COMMUNITY LIVING CENTER (CLC). Includes Project Number (595-601), Building Number (CLC-1), Drawing Number (GI002), Location (LEBANON, PENNSYLVANIA), Issue Date (2023-02-09), Checked (JP), and Drawn (MPY).



A1 EXTERIOR ENTRY PERSPECTIVE
N.T.S.



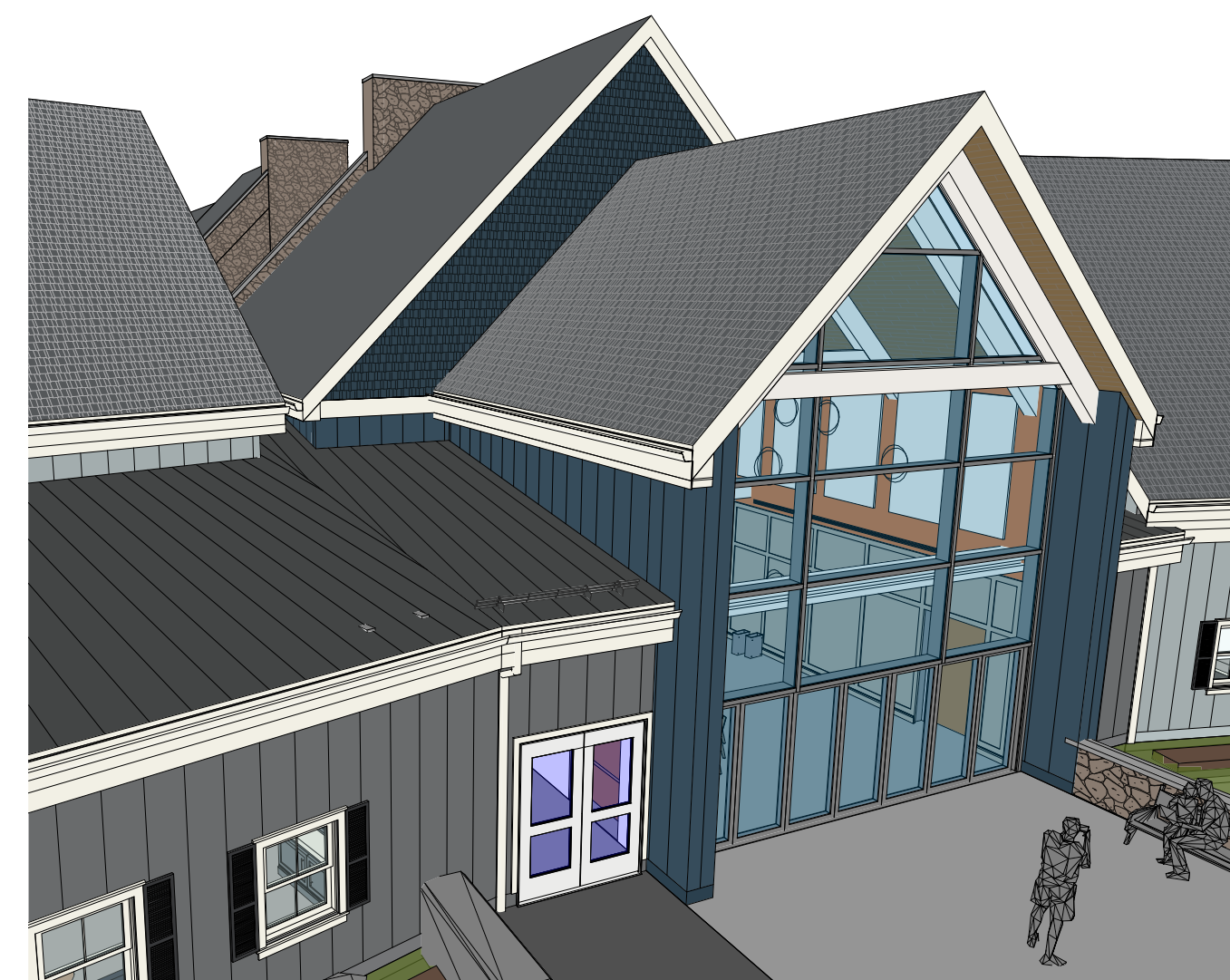
B1 EXTERIOR RESIDENT DINING
N.T.S.



D1 EXTERIOR VIEW FROM BUILDING 17 ROAD
N.T.S.



E1 EXTERIOR GARAGE PERSPECTIVE
N.T.S.



F1 EXTERIOR GREAT ROOM 1
N.T.S.



F3 EXTERIOR GREAT ROOM 2
N.T.S.



B6 CONCIERGE
N.T.S.



B8 KITCHEN
N.T.S.



C6 DINING
N.T.S.



C8 KITCHEN 2
N.T.S.



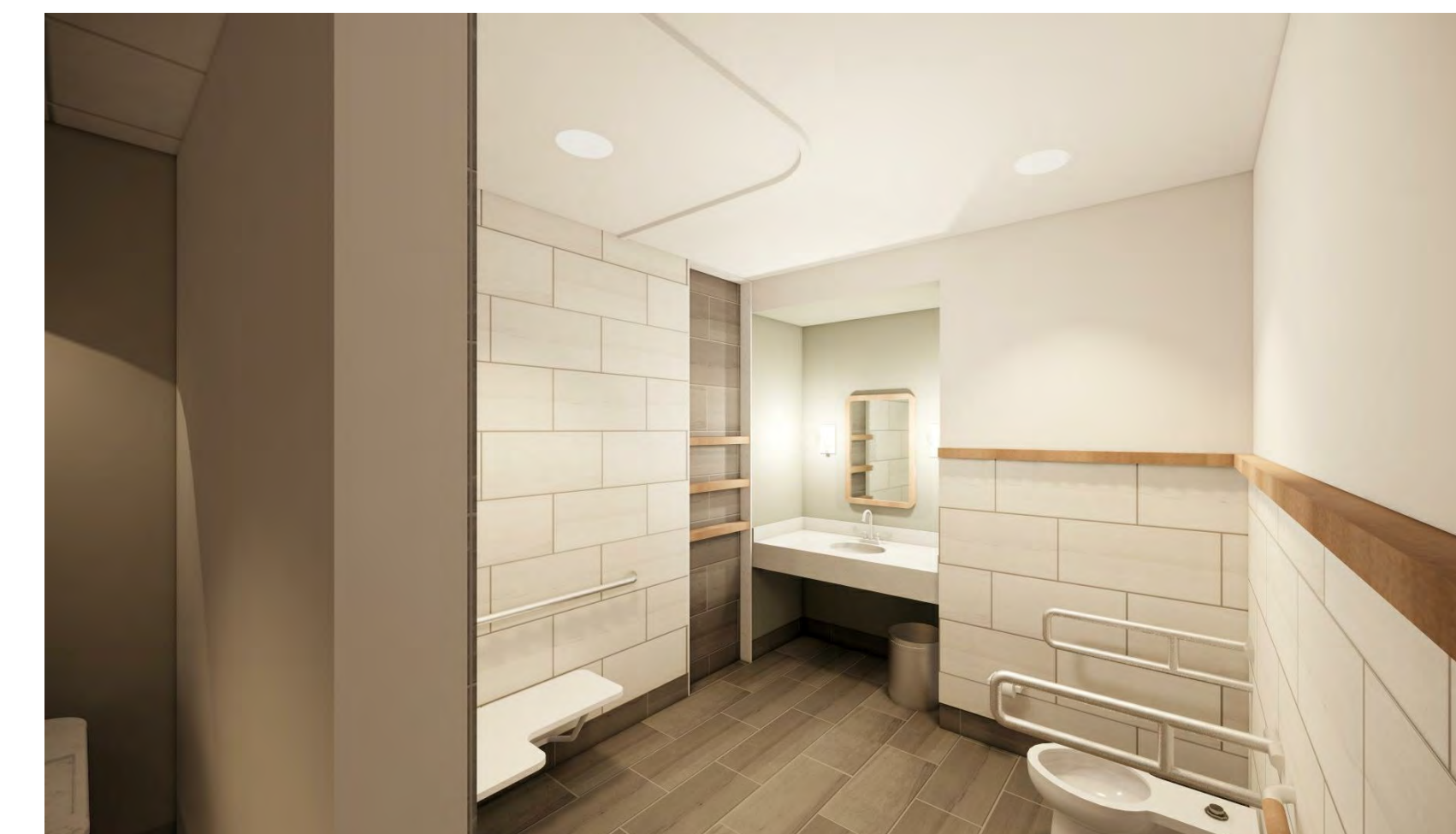
D6 GREAT-ROOM
N.T.S.



D8 KITCHEN 3
N.T.S.



F6 FIREPLACE
N.T.S.



F8 RESIDENT TOILET ROOM
N.T.S.

three inch = one foot
one and one half inch = one foot
one inch = one foot
three quarter inch = one foot
one half inch = one foot
three eighths inch = one foot
one quarter inch = one foot
one eighth inch = one foot

A
B
C
D
E
F

PRINTS OF THIS DRAWING SHALL NOT BE USED FOR ANY PURPOSE WHATSOEVER WITHOUT THE SEAL AND SIGNATURE OF THE PROFESSIONAL ENGINEER

Revisions:	Date:

CONSULTANT

ARRAY architects, inc.
ARRAY-ARCHITECTS.COM
1 West Elm Street, Ste 400
Conshohocken, PA 19428
o: 610-270-0599
f: 601-270-0995

Gordon
PROGRAMMING AND PLANNING
CIVIL ENGINEERING
LANDSCAPE ARCHITECTURE
SURVEY AND MAPPING
SECURITY CONSULTING
148 S Queen St, Suite 201
Martinsburg, WV 25401
Phone: 304-725-8456
www.gordon.us.com

ENGINEER OF RECORD

Miller-Remick LLC
M.E.P. & Structural Engineering
A Service Disabled Veteran Owned
Small Business
1010 KINGS HIGHWAY SOUTH
CHERRY HILL, NEW JERSEY 08034
PHONE: (856)429-4000
FAX: (856)429-9002
MR PROJECT NO. 0499-0124

MILLER-REMICK LLC
PROFESSIONAL ENGINEER

Office of
Construction
and Facilities
Management
VA U.S. Department
of Veterans Affairs

Drawing Title RENDERINGS
Approved:

Phase BID DOCUMENTS

Project Title CONSTRUCT NEW COMMUNITY LIVING CENTER (CLC)
Location LEBANON, PENNSYLVANIA
Issue Date 2023-02-09
Checked JP
Drawn MPY/LM

Project Number 595-601
Building Number CLC-1
Drawing Number G1003

Table with 10 columns and multiple rows of fire-resistance ratings and product specifications. Includes sections for ONLINE CERTIFICATIONS DIRECTORY, DESIGN No. U465, and various product listings with their respective fire-resistance ratings and assembly details.

Table with 10 columns and multiple rows of fire-resistance ratings and product specifications. Includes sections for ONLINE CERTIFICATIONS DIRECTORY, DESIGN No. U465, and various product listings with their respective fire-resistance ratings and assembly details.

PRINTS OF THIS DRAWING SHALL NOT BE USED FOR ANY PURPOSE WHATSOEVER WITHOUT THE SEAL AND SIGNATURE OF THE PROFESSIONAL ENGINEER. CONSULTANT: ARRAY architects, INC. ENGINEER OF RECORD: Miller-Remick LLC. Office of Construction and Facilities Management. Drawing Title: UL DESIGN CRITERIA. Phase: BID DOCUMENTS. Project Title: CONSTRUCT NEW COMMUNITY LIVING CENTER (CLC). Location: LEBANON, PENNSYLVANIA. Issue Date: 2023-02-09. Checked: JP. Drawn: MPY. Project Number: 595-601. Building Number: CLC-1. Drawing Number: G1100.

