



F1 OVERALL FIRST FLOOR ARCHITECTURAL PLAN
3/32" = 1'-0"

FIRST FLOOR PLAN GENERAL NOTES

- REFER TO AE111 THROUGH AE114 FOR EQUIPMENT PLANS
- REFER TO AE200 SERIES FOR BUILDING ENCLOSURE SYSTEMS & EXTERIOR ELEVATIONS
- REFER TO AE300 SERIES FOR BUILDING & TYPICAL WALL SECTIONS
- ALL DIMENSIONS ON EXTERIOR WALLS ARE TO THE FINISHED FACE

ALTERNATE LIST

ADD ALTERNATE NO. 1: INTERIOR AND EXTERIOR CAMERAS PROVIDED BY THE VA.

ADD ALTERNATE NO. 2: TREES AT PERIMETER OF THE LOOP ROAD PROVIDED BY THE CONTRACTOR.

ADD ALTERNATE NO. 3: GAS SERVICE MAIN TO BE PROVIDED BY THE CONTRACTOR.

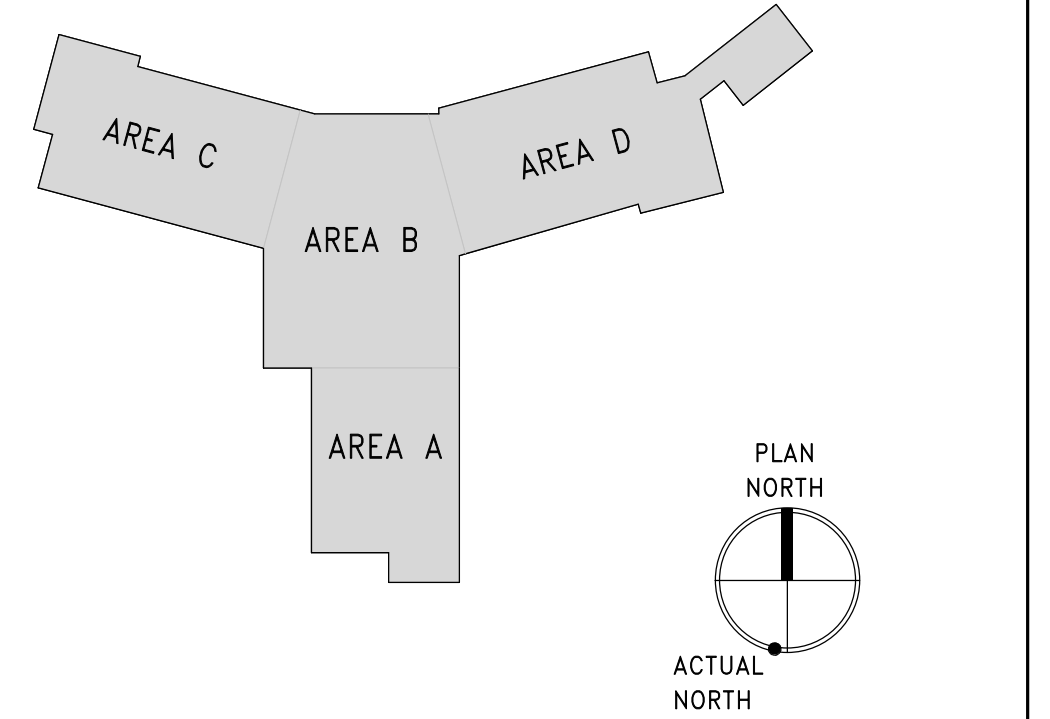
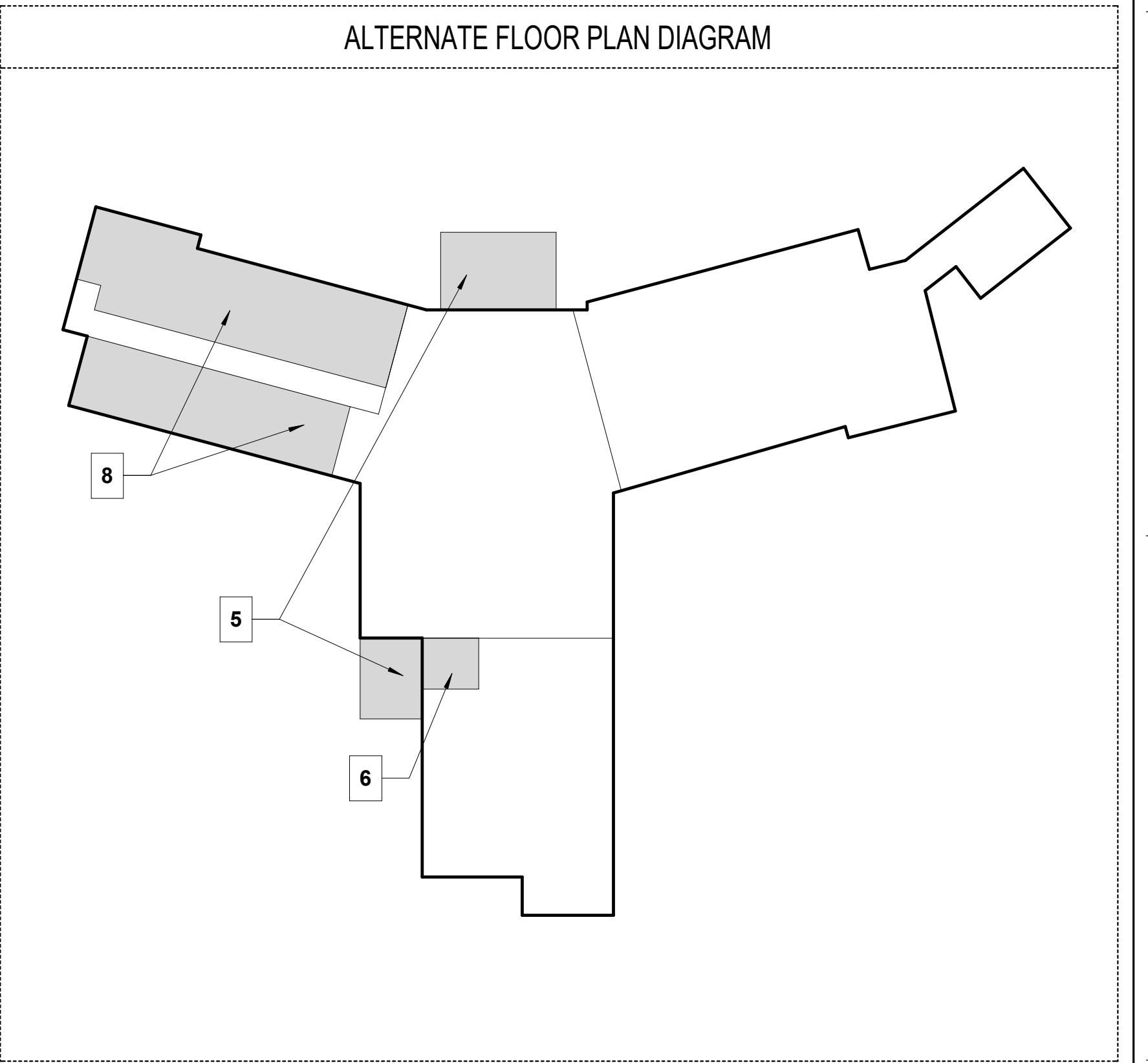
ADD ALTERNATE NO. 4: ADD G LOOP ROAD.

ADD ALTERNATE NO. 5: ADD MULTIPURPOSE PATIOS AND LANDSCAPE WALLS. SCOPE INDICATED REPRESENTS ADD ALTERNATE NO. 5.

ADD ALTERNATE NO. 6: FIT OUT LAUNDRY ROOM 136. SCOPE INDICATED ON DRAWINGS REPRESENTS ADD ALTERNATE NO. 6. BASE BID SCOPE SHALL SHELL PATIENT'S LAUNDRY ROOM 136. WALL TO MAIN KITCHEN WILL BE 1-HOUR RATED, AND DOOR WILL BE A 45-MINUTE RATED DOOR WITH CLOSER HARDWARE.

ADD ALTERNATE NO. 7: EXPAND LENGTH OF LOOP ROAD TURNAROUND.

ADD ALTERNATE NO. 8: FIT OUT WESTERN WING. SCOPE INDICATED ON DRAWINGS REPRESENTS ADD ALTERNATE NO. 8. BASE BID SCOPE SHALL SHELL WESTERN WING. CORRIDOR TO REMAIN FINISHED. SLAB ON GRADE AND BELOW GRADE UTILITIES WITH STUB UPS SHALL BE INSTALLED. SHELLING SHALL INCLUDE ROOMS 100, 101A, 101B, 102, 102A, 103, 103A, 114, 104, 104A, 105, 105A, 106, 106A INCLUDING WALLS BETWEEN ROOMS. SOILED UTILITY 115, SPA 123, SPA TLT 123A AND RESIDENT CORRIDOR 168 ARE FIT OUT TO INCLUDE FINISHES. DOORS 100, 101, 102, 103, 114, 104, 105, AND 106 ARE ELIMINATED. 45-MINUTE RATED DOORS, AND ASSOCIATED RATED CLOSERS, ARE PROVIDED OF SAME DIMENSION AND LOCATION TO DOORS 101 AND 105 WALLS ON BOTH SIDES (R) ARE CONVERTED TO 1-HOUR RATED WALLS 68, AND MEMORY BOXES, TILE WALL POCKETS, ETC IN THE CORRIDOR WALLS ARE PREPARED FOR FUTURE BOXES AND MATERIAL STUD CLOSINGS, BUT NOT INSTALLED. IN LIEU OF BOXES, A FULLY GYPSUM SHEATHED WALL WILL BE INSTALLED.



three inch = one foot
one and one half inch = one foot
one inch = one foot
three quarter inch = one foot
one half inch = one foot
three eighth inch = one foot
one quarter inch = one foot
one eighth inch = one foot
2/8/2023 4:43:10 PM

PRINTS OF THIS DRAWING SHALL NOT BE USED FOR ANY PURPOSE WHATSOEVER WITHOUT THE SEAL AND SIGNATURE OF THE PROFESSIONAL ENGINEER Revisions: _____ Date: _____	CONSULTANT ARRAY architects, INC. ARRAY-ARCHITECTS.COM 1 West Elm Street, Ste 400 Conshohocken, PA 19428 c: 610-270-0599 f: 601-270-0995	ENGINEER OF RECORD Gordon PROGRAMMING AND PLANNING CIVIL ENGINEERING LANDSCAPE ARCHITECTURE SURVEY AND MAPPING SECURITY CONSULTING 148 S Queen St, Suite 201 Martinsburg, WV 25401 Phone: 304-725-8456 www.gordon.us.com	ENGINEER OF RECORD Miller-Remick LLC M.E.P. & Structural Engineering A Service Disabled Veteran Owned Small Business 1010 KINGS HIGHWAY SOUTH CHERRY HILL, NEW JERSEY 08034 PHONE: (856)429-4000 FAX: (856)429-9002 MR PROJECT NO: 0499-0124	Office of Construction and Facilities Management U.S. Department of Veterans Affairs	Drawing Title OVERALL ARCHITECTURAL FIRST FLOOR DIMENSION PLAN Approved: _____	Phase BID DOCUMENTS	Project Title CONSTRUCT NEW COMMUNITY LIVING CENTER (CLC)	Project Number 595-601 Building Number CLC-1 Drawing Number AE110
	Location LEBANON, PENNSYLVANIA	Issue Date 2023-02-09	Checked JP	Drawn MPY				

DOOR SCHEDULE															
DOOR											FRAME			HARDWARE TXT	REMARKS
NUMB	TYPE	SIZE		MATERIAL	FINISH	GLAZING	TYPE	WIDTH	MATERIAL	FRAME GLAZING	RATING				
		WIDTH	HEIGHT												
100	D	6' - 0"	7' - 0"	SCV	TF	CTG	3	6' - 4"	HM	-	-	missing	BARIATRIC Resident		
100A	P	4' - 0"	9' - 0"	SCV	TF	-	-	0' - 0"	AL	-	-	R3 SIM	This is a sliding door and HW-R3 does not match the function. Where is SIM coming from, Why?		
101	A	4' - 0"	7' - 0"	SCV	TF	-	1	4' - 4"	HM	-	-	R1 NOTE 1	HW-R1: hinges, guestroom card lock, closer, floor stop, door viewers, threshold, auto door bottom, door seals.		
101A	P	4' - 10"	9' - 0"	SCV	TF	-	-	0' - 0"	AL	-	-	R3 SIM	This is a sliding door and HW-R3 does not match the function. Where is SIM coming from, Why?		
102	A	4' - 0"	7' - 0"	SCV	TF	-	1	4' - 4"	HM	-	-	R1 NOTE 1	HW-R1: hinges, guestroom card lock, closer, floor stop, door viewers, threshold, auto door bottom, door seals.		
102A	P	4' - 10"	9' - 0"	SCV	TF	-	-	0' - 0"	AL	-	-	R3 SIM	This is a sliding door and HW-R3 does not match the function. Where is SIM coming from, Why?		
103	A	4' - 0"	7' - 0"	SCV	TF	-	1	4' - 4"	HM	-	-	R1 NOTE 1	HW-R1: hinges, guestroom card lock, closer, floor stop, door viewers, threshold, auto door bottom, door seals.		
103A	P	4' - 10"	9' - 0"	SCV	TF	-	-	0' - 0"	AL	-	-	R3 SIM	This is a sliding door and HW-R3 does not match the function. Where is SIM coming from, Why?		
104	A	4' - 0"	7' - 0"	SCV	TF	-	1	4' - 4"	HM	-	-	R1 NOTE 1	HW-R1: hinges, guestroom card lock, closer, floor stop, door viewers, threshold, auto door bottom, door seals.		
104A	P	4' - 10"	9' - 0"	SCV	TF	-	-	0' - 0"	AL	-	-	R3 SIM	This is a sliding door and HW-R3 does not match the function. Where is SIM coming from, Why?		
105	A	4' - 0"	7' - 0"	SCV	TF	-	1	4' - 4"	HM	-	-	R1 NOTE 1	HW-R1: hinges, guestroom card lock, closer, floor stop, door viewers, threshold, auto door bottom, door seals.		
105A	P	4' - 10"	9' - 0"	SCV	TF	-	-	0' - 0"	AL	-	-	R3 SIM	This is a sliding door and HW-R3 does not match the function. Where is SIM coming from, Why?		
106	A	4' - 0"	7' - 0"	SCV	TF	-	1	4' - 4"	HM	-	-	R1 NOTE 1	HW-R1: hinges, guestroom card lock, closer, floor stop, door viewers, threshold, auto door bottom, door seals.		
106A	P	4' - 10"	9' - 0"	SCV	TF	-	-	0' - 0"	AL	-	-	R3 SIM	This is a sliding door and HW-R3 does not match the function. Where is SIM coming from, Why?		
107	A	4' - 0"	7' - 0"	SCV	TF	-	1	4' - 4"	HM	-	-	R1 NOTE 1	HW-R1: hinges, guestroom card lock, closer, floor stop, door viewers, threshold, auto door bottom, door seals.		

How to proceed

what is the hardware set, this type door

Please tell us how to proceed

Please confirm hardware set

what is note 1, swing?

Please tell us how to proceed

Please confirm hardware set

what is note 1, swing?

Please tell us how to proceed

Please confirm hardware set

what is note 1, swing?

Please tell us how to proceed

Please confirm hardware set

what is note 1, swing?

Please tell us how to proceed

Please confirm hardware set

what is note 1, swing?

Please tell us how to proceed

Please confirm hardware set

what is note 1, swing?

Please tell us how to proceed

Please confirm hardware set

what is note 1, swing?

107A	P	4' - 10"	9' - 0"	SCV	TF	-	-	0' - 0"	AL	-	-	R3 SIM	This is a sliding door and HW-R3 does not match the function. Where is SIM coming from, Why?	Please tell us how to proceed
		consult VA website: https://www.cfm.va.gov/til/room/roomFinishes.pdf which indicates type lock functions based on door hardware R3 and for note 1. Sim. is in reference to the locking function being the same, but hardware for a sliding door.												
108	A	4' - 0"	7' - 0"	SCV	TF	-	1	4' - 4"	HM	-	-	R1 NOTE 1	HW-R1: hinges, guestroom card lock, closer, floor stop, door viewers, threshold, auto door bottom, door seals.	Please confirm hardware set what is note 1, swing?
		consult VA website: https://www.cfm.va.gov/til/room/roomFinishes.pdf which indicates type lock functions based on door hardware R1 and for note 1. Include hardware listed in remarks												
108A	P	4' - 10"	9' - 0"	SCV	TF	-	-	0' - 0"	AL	-	-	R3 SIM	This is a sliding door and HW-R3 does not match the function. Where is SIM coming from, Why?	Please tell us how to proceed
		consult VA website: https://www.cfm.va.gov/til/room/roomFinishes.pdf which indicates type lock functions based on door hardware R3 and for note 1. Sim. is in reference to the locking function being the same, but hardware for a sliding door.												
109	A	4' - 0"	7' - 0"	SCV	TF	-	1	4' - 4"	HM	-	-	R1 NOTE 1	HW-R1: hinges, guestroom card lock, closer, floor stop, door viewers, threshold, auto door bottom, door seals.	Please confirm hardware set what is note 1, swing?
		consult VA website: https://www.cfm.va.gov/til/room/roomFinishes.pdf which indicates type lock functions based on door hardware R1 and for note 1. Include hardware listed in remarks												
109A	P	4' - 10"	9' - 0"	SCV	TF	-	-	0' - 0"	AL	-	-	R3 SIM	This is a sliding door and HW-R3 does not match the function. Where is SIM coming from, Why?	Please tell us how to proceed
		consult VA website: https://www.cfm.va.gov/til/room/roomFinishes.pdf which indicates type lock functions based on door hardware R3 and for note 1. Sim. is in reference to the locking function being the same, but hardware for a sliding door.												
110	A	4' - 0"	7' - 0"	SCV	TF	-	1	4' - 4"	HM	-	-	R1 NOTE 1	HW-R1: hinges, guestroom card lock, closer, floor stop, door viewers, threshold, auto door bottom, door seals.	Please confirm hardware set what is note 1, swing?
		consult VA website: https://www.cfm.va.gov/til/room/roomFinishes.pdf which indicates type lock functions based on door hardware R1 and for note 1. Include hardware listed in remarks												
110A	P	4' - 10"	9' - 0"	SCV	TF	-	-	0' - 0"	AL	-	-	R3 SIM	This is a sliding door and HW-R3 does not match the function. Where is SIM coming from, Why?	Please tell us how to proceed
		consult VA website: https://www.cfm.va.gov/til/room/roomFinishes.pdf which indicates type lock functions based on door hardware R3 and for note 1. Sim. is in reference to the locking function being the same, but hardware for a sliding door.												
111	A	4' - 0"	7' - 0"	SCV	TF	-	1	4' - 4"	HM	-	-	R1 NOTE 1	HW-R1: hinges, guestroom card lock, closer, floor stop, door viewers, threshold, auto door bottom, door seals.	Please confirm hardware set what is note 1, swing?
		consult VA website: https://www.cfm.va.gov/til/room/roomFinishes.pdf which indicates type lock functions based on door hardware R1 and for note 1. Include hardware listed in remarks												
111A	P	4' - 10"	9' - 0"	SCV	TF	-	-	0' - 0"	AL	-	-	R3 SIM	This is a sliding door and HW-R3 does not match the function. Where is SIM coming from, Why?	Please tell us how to proceed
		consult VA website: https://www.cfm.va.gov/til/room/roomFinishes.pdf which indicates type lock functions based on door hardware R3 and for note 1. Sim. is in reference to the locking function being the same, but hardware for a sliding door.												
112	A	4' - 0"	7' - 0"	SCV	TF	-	1	4' - 4"	HM	-	-	R1 NOTE 1	HW-R1: hinges, guestroom card lock, closer, floor stop, door viewers, threshold, auto door bottom, door seals.	Please confirm hardware set what is note 1, swing?
		consult VA website: https://www.cfm.va.gov/til/room/roomFinishes.pdf which indicates type lock functions based on door hardware R1 and for note 1. Include hardware listed in remarks												
112A	P	4' - 10"	9' - 0"	SCV	TF	-	-	0' - 0"	AL	-	-	R3 SIM	This is a sliding door and HW-R3 does not match the function. Where is SIM coming from, Why?	Please tell us how to proceed
		consult VA website: https://www.cfm.va.gov/til/room/roomFinishes.pdf which indicates type lock functions based on door hardware R3 and for note 1. Sim. is in reference to the locking function being the same, but hardware for a sliding door.												
113	D	6' - 0"	7' - 0"	SCV	TF	CTG	3	6' - 4"	HM	-	-	missing	BARIATRIC Resident	what is the hardware set, this type door
113A	P	4' - 0"	9' - 0"	SCV	TF	-	-	0' - 0"	AL	-	-	R3 SIM	This is a sliding door and HW-R3 does not match the function. Where is SIM coming from, Why?	Please tell us how to proceed
		consult VA website: https://www.cfm.va.gov/til/room/roomFinishes.pdf which indicates type lock functions based on door hardware R3 and for note 1. Sim. is in reference to the locking function being the same, but hardware for a sliding door.												
114	A	4' - 0"	7' - 0"	SCV	TF	-	1	4' - 4"	HM	-	-	5B	storage	ok
115	A	3' - 0"	7' - 0"	SCV	TF	-	1	3' - 4"	HM	-	45 M	SH-3C	Toilet	
116	A	4' - 0"	7' - 0"	SCV	TF	-	1	4' - 4"	HM	-	-	4K	RESPIRATORY	
117	A	4' - 0"	7' - 0"	SCV	MP	-	1M	6' - 0"	HM	-	-	1Q	multi- purpose	ok
117A	A	4' - 0"	7' - 0"	SCV	MP	-	1M	6' - 0"	HM	-	45M	5B	storage	ok
118	A	4' - 0"	7' - 0"	SCV	TF	-	1	4' - 4"	HM	-	60 M	5B	storage	ok
122A	C	3' - 0"	7' - 0"	SCV	TF	CTG	1	3' - 4"	HM	-	-	SH-3D		
123	A	4' - 0"	7' - 0"	SCV	TF	-	1	4' - 4"	HM	-	-	4M	Spa	
123A	P	4' - 0"	8' - 0"	SCV	TF	-	-	0' - 0"	AL	-	-	R3 SIM	This is a sliding door and HW-R3 does not match the function. Where is SIM coming from, Why?	Please tell us how to proceed
		consult VA website: https://www.cfm.va.gov/til/room/roomFinishes.pdf which indicates type lock functions based on door hardware R3 and for note 1. Sim. is in reference to the locking function being the same, but hardware for a sliding door.												

consult VA website: <https://www.cfm.va.gov/til/room/roomFinishes.pdf> which indicates type lock functions based on door hardware R1 and for note 1. Include hardware listed in remarks

124		3' - 1 7/8"	7' - 2"										TBD	DOOR ALWAYS LOCKED FROM THE INSIDE, NO EXIT, UNLESS CARD READER, propped open, video camera, wanderguard buzz at the concierge desk and the nurse's desk. Buzz to a beeper or cell phone.
127	A	3' - 0"	7' - 0"	SCV	TF	-	1	3' - 4"	HM	-	-	R3A	Toilet	
128		7' - 4"	7' - 0"										TBD	FRENCH DOOR. CARD READER, ELECTRIFIED CHECKPOINT, VIDEO CAMERA BUZZER, TELEPHONE ACCESS TO DOOR
128A		7' - 4"	7' - 0"										TBD	FRENCH DOOR
130		6' - 1 1/2"	7' - 2"										TBD	WITH CARD READER, VIDEO CAMERA BUZZER, TELEPHONE ACCESS TO DOOR, WANDERGUARD
132	A	4' - 0"	7' - 0"	SCV	TF	-	1	4' - 4"	HM	-	-	R2B	Consult	
132A		4' - 4 1/2"	8' - 0"										4B SIM	
133	A	3' - 0"	7' - 0"	SCV	TF	-	1	3' - 4"	HM	-	-	2	HW-2	
134	A	3' - 0"	7' - 0"	SCV	TF	-	1	3' - 4"	HM	-	-	SH-4	Lounge	
135														
135A	BB	7' - 4"	7' - 0"	SCV	TF	CTG	3	7' - 8"	HM	-			TBD	
135B	CC	6' - 0"	7' - 0"	SCV	TF	FRG	3	6' - 4"	HM	-	45 M		TBD	WITH CARD READER, WANDERGUARD, SENSOR DOOR TO AUDIO ALARM AFTER 30 SECONDS
136	A	4' - 0"	7' - 0"	SCV	TF	-	1	4' - 4"	HM	-	-	R2B	Laundry	
137														
138A	A	4' - 0"	7' - 0"	SCV	TF	-	1	4' - 4"	HM	-	-	R2	Pantry	
138B	A	3' - 6"	7' - 0"	SCV	TF	-	1	3' - 10"	HM	-	-	4J	WITH WANDERGUARD, pantry	
138C	A	3' - 0"	7' - 0"	SCV	TF	-	1	3' - 4"	HM	-	45 M	R2C	WITH LOCKING Pantry	
139	A	3' - 0"	7' - 0"	SCV	TF	-	1	3' - 4"	HM	-	-	3E	Touchdown	
141	A	4' - 0"	7' - 0"	SCV	TF	-	1	4' - 4"	HM	-	-	SH-3C	Supply	

what is the hardware set?
Can you be more specific calling out the door?

what is the hardware set?
Can you be more specific calling out the door?

what is the hardware set?
Can you be more specific calling out the door?

what is the hardware set?
Can you be more specific calling out the door?

what is the hardware set?
Can you be more specific calling out the door?

what is the hardware set?
Can you be more specific calling out the door?

ok

ok

142	A	4' - 0"	7' - 0"	SCV	TF	-	1	4' - 4"	HM	-	45 M	SH-3C	Soiled Hold	
145	BB	7' - 0"	7' - 0"	SCV	TF	CTG	4	7' - 4"	HM	-	-	TBD		
<p>HW #SH10 ELECTRIC PANIC Hardware Devices: • Card Reader • Closer • Continuous Hinges • Door Contact • Electric Strike • Exit Device • Flush Bolts • Magnetic Lock • Mortise Lock Operation at All Times: • Corridor 145 free operation at all times • Kitchen side access levers and panic always dogged locked unless fire alarm • Card reader releases strike</p>														
146	A	3' - 0"	7' - 0"	SCV	TF	-	1	3' - 4"	HM	-	-	SH-3D*	WITH CARD READER- IT	
147A	A	4' - 0"	7' - 0"	HM	MP	-	1M	4' - 4"	HM	-	-	TBD		
<p>consult VA website: https://www.cfm.va.gov/tll/room/roomFinishes.pdf which indicates type lock functions based on door hardware EB.</p>														
147B	A	3' - 8"	7' - 0"	SCV	TF	-	1	4' - 0"	HM	-	45 M	SH-3D	WITH CARD READER Mech RM	
148A	BB	7' - 4"	7' - 0"	HM	MP	CTG	3	7' - 8"	HM	-	45 M	5F		
148B		0' - 0"	0' - 0"									as Specified	TBD	GARAGE DOOR OPENER, 5-7, KEYPAD
149A	ESG	5' - 0"	6' - 4 1/2"	-	-	-	-	5' - 4"	-	-	-	-	ESG - EXTERIOR SWING GATE TO MATCH VINYL FENCE	
<p>epoxy painted black 3 hinges and latch- gate type hardware with padlock hook option</p>														
149B	ESG	5' - 0"	6' - 4 1/2"	-	-	-	-	5' - 4"	-	-	-	-	ESG - EXTERIOR SWING GATE TO MATCH VINYL FENCE	
<p>epoxy painted black 3 hinges and latch- gate type hardware with padlock hook option</p>														
151	A	4' - 0"	7' - 0"	HM	MP	-	1M	4' - 4"	HM	-	-	4E	Electrical RM	
156		0' - 0"	0' - 0"									TBD	DO NOT SCHEDULE	
157	A	3' - 0"	7' - 0"	SCV	TF	-	1	3' - 4"	HM	-	-	5D	EVS	
160	BB	6' - 0"	7' - 0"	HM	MP	CTG	3M	6' - 4"	HM	-	-	TBD		
<p>HW #SH10 ELECTRIC PANIC Hardware Devices: • Card Reader • Closer • Continuous Hinges • Door Contact • Electric Strike • Exit Device • Flush Bolts • Magnetic Lock • Mortise Lock • Elopement System Operation at All Times: • Corridor 155 free operation at all times • Kitchen side access levers and panic always dogged locked unless fire alarm • Card reader releases panic electric strike</p>														
161A	A	3' - 6"	7' - 0"	SCV	TF	-	1	3' - 10"	HM	-	45 M	TBD		
<p>SPECIFIC MORTISE WITH CONTACTS - DEADBOLT- SH2 Contacts monitored</p>														
161B	A	3' - 6"	7' - 0"	SCV	TF	-	1	3' - 10"	HM	-	45 M	TBD		
<p>SPECIFIC MORTISE WITH CONTACTS - DEADBOLT- SH2 Contacts monitored</p>														
163	AA	5' - 0"	7' - 0"	HM	MP	-	3M	5' - 4"	HM	-	-	F82B		
164	AA	5' - 0"	7' - 0"	HM	MP	-	3M	5' - 4"	HM	-	-	F82B		

what is the hardware set?
Can you be more specific calling out the door?

what is the hardware set?
Can you be more specific calling out the door?

what is the hardware set?
Can you be more specific calling out the door?
this is the garage door - fully specified

what hardware

what hardware

ok

what is the hardware set?
Can you be more specific calling out the door?
this is the garage door track- an error in the door schedule - disregard

what is the hardware set?
Can you be more specific calling out the door?

what is the hardware set?
Can you be more specific calling out the door?

what is the hardware set?
Can you be more specific calling out the door?

165A	CC	6' - 0"	7' - 0"	HM	MP	CTG	3M	6' - 4"	HM	-	TBD	WITH CARD READER		
<p>SDO 102 sim. Hardware Devices: ▪ Card Reader ▪ Coordinated Closers ▪ Continuous Hinge ▪ Door Contact ▪ Electric Strike ▪ Coordinated Exit Devices ▪ Flush Bolts ▪ Intercom and buzzer (tied to concierge and to nurse station) ▪ Magnetic Lock ▪ Mortise Lock ▪ threshold in bed of sealant and rubber seals along perimeter of doors ▪ Door sweeps and astragal Normal Daytime Operation: ▪ Free operation from interior, exterior side Card Reader in</p>														
165B	AA	6' - 0"	7' - 0"	HM	MP	-	3M	6' - 4"	HM	-	-	TBD		
<p>SDO 102 sim. Hardware Devices: ▪ Card Reader ▪ Coordinated Closers ▪ Continuous Hinge ▪ Door Contact ▪ Electric Strike ▪ Coordinated Exit Devices ▪ Flush Bolts ▪ Intercom and buzzer (tied to concierge and to nurse station) ▪ Magnetic Lock ▪ Mortise Lock ▪ threshold in bed of sealant and rubber seals along perimeter of doors ▪ Door sweeps and astragal Normal Daytime Operation: ▪ Free operation from interior, exterior side Card Reader in</p>														
165C	CC	6' - 0"	7' - 0"	HM	MP	CTG	3M	6' - 4"	HM	-	-	R2	match 165B	
166	A	3' - 0"	7' - 0"	SCV	TF	-	1	3' - 4"	HM	-	-	SH-3D*	Data rm	
167	A	4' - 0"	7' - 0"	HM	MP	-	1M	4' - 4"	HM	-	-	4E	Electrical RM	ok
168A	BB	8' - 0"	8' - 0"	SCW	TF	FRG	4	8' - 4"	HM	-	45 M	TBD	SEE INTEGRAL DOOR SPECIFICATION	what is the hardware set? Can you be more specific calling out the door?
<p>Hardware Devices: ▪ Hold Opens ▪ Card Reader ▪ Coordinated Closers ▪ Continuous Hinges ▪ Exit Devices ▪ Flush Bolts ▪ Intercom ▪ Mortise Lock ▪ Normal Operation: ▪ Hold opens active Pandemic Operation: Hold opens detached from Fire alarm releases ▪ Free panic bar operation or Locked as desired</p>														
168B	A	4' - 0"	7' - 0"	HM	MP	-	1M	4' - 4"	HM	-	-	TBD	CARD READER. SENSOR DOOR TO ALARM AFTER 30 SECONDS	what is the hardware set? Can you be more specific calling out the door?
<p>Hardware Devices: ▪ Coordinated Closers ▪ Continuous Hinges ▪ Electric Strike Active leaf ▪ Exit Devices ▪ Flush Bolts inactive leaf ▪ Magnetic Lock ▪ Mortise Lock ▪ threshold in bed of sealant and rubber seals along perimeter of doors ▪ Door sweeps and astragal ▪ Elopement system Operation: ▪ Exterior lever CR ingress, Interior dogged locked, free egress except with activated Elopement system ▪ Fire alarm on interior releases electric strikes egresses on 30 second delayed egress ▪ Door contact alarmed to central monitoring</p>														
210	AA	6' - 0"	7' - 0"	HM	MP	-	3	6' - 4"	HM	-	45 M	TBD		what is the hardware set? Can you be more specific calling out the door?
<p>consult VA website: https://www.cfm.va.gov/tll/room/roomFinishes.pdf which indicates type lock functions based on door hardware E8 in reference to the locking function</p>														
220	AA	5' - 0"	6' - 6"	HM	MP	-	3	5' - 4"	HM	-	-	TBD	SEE ELEVATION FOR APPLIED FINISHES	what is the hardware set? Can you be more specific calling out the door?
<p>consult VA website: https://www.cfm.va.gov/tll/room/roomFinishes.pdf which indicates type lock functions based on door hardware E8 in reference to the locking function</p>														
230	AA	5' - 0"	6' - 6"	HM	MP	-	3	5' - 4"	HM	-	-	TBD	SEE ELEVATION FOR APPLIED FINISHES	what is the hardware set? Can you be more specific calling out the door?
<p>consult VA website: https://www.cfm.va.gov/tll/room/roomFinishes.pdf which indicates type lock functions based on door hardware E8 in reference to the locking function</p>														
Grand total: 83														