

# ELECTRICAL ABBREVIATIONS

<b>#</b>		<b>DPDT</b>	DOUBLE POLE, DOUBLE THROW
1P	SINGLE POLE	DPST	DOUBLE POLE, SINGLE THROW
1PH	SINGLE PHASE	DRSW	DOOR SWITCH
2C	TWO-CONDUCTOR	DS	DISCONNECT SWITCH
3C	THREE-CONDUCTOR	DWG	DRAWING
3PH	THREE PHASE	<b>E</b>	
4C	FOUR-CONDUCTOR	EL	ELEVATION
4W	FOUR WIRE	ELEC	ELECTRIC OR ELECTRICAL
<b>A</b>		ELEV	ELEVATOR
A/C UNIT	AIR CONDITIONING UNIT	EMCP	EMERGENCY MONITORING CONTROL PANEL
A/E	ARCHITECT / ENGINEER	EMER	EMERGENCY
AAP	ALARM ANNUNCIATOR PANEL	EMI	ELECTROMAGNETIC INTERFERENCE
AC	ALTERNATING CURRENT OR ARMORED CABLE	EMT	ELECTRICAL METALLIC TUBING
ACC	ACCESSIBLE	ENCL	ENCLOSURE
ADDL	ADDITIONAL	EPO	EMERGENCY POWER OFF
ADJ	ADJACENT OR ADJOINING	EPRF	EXPLOSION PROOF
ADO	AUTOMATIC DOOR OPENER	ESMT	EASEMENT
AF	AMPERE FRAME OR AMP FUSE	EW	ELECTRIC WATER COOLER
AFC	ABOVE FINISHED COUNTER, AUTOMATIC FREQUENCY CONTROL, OR AVAILABLE FAULT CURRENT	EWH	ELECTRIC WATER HEATER
		EXIST	EXISTING
<b>B</b>		<b>F</b>	
AFF	ABOVE FINISHED FLOOR	FA	FIRE ALARM
AFG	ABOVE FINISHED GRADE	FAAP	FIRE ALARM ANNUNCIATOR PANEL
AH	AMPERE-HOUR	FABL	FIRE ALARM BELL
AHU	AUTHORITY HAVING JURISDICTION	FABX	FIRE ALARM BOX
AIC	AMPERE INTERRUPTING CAPACITY	FACP	FIRE ALARM CONTROL PANEL
ALT	ALTERNATE	FC	FOOTCANDLE
AMB OR A	AMBIENT	FIXT	FIXTURE
AMP	AMPERE	FLA	FULL LOAD AMPS
ARCH	ARCHITECT	FLEX	FLEXIBLE METALLIC CONDUIT
ASC	AMPS SHORT CIRCUIT	FLT	FLOODLIGHT
AT	AMPERE TRIP	FLUOR	FLUORESCENT
ATS	AUTOMATIC TRANSFER SWITCH	FLUOR FIXT	FLUORESCENT FIXTURE
AUTO	AUTOMATIC	FOUTT	TELEPHONE FLOOR OUTLET
AV	AUDIO VISUAL	FP	FIRE PROTECTION
<b>C</b>		FT	FEET OR FOOT
BAT	BATTERY	FU SW	FUSED SWITCH
BC	BARE COPPER	FVNR	FULL VOLTAGE NON-REVERSING
BD	BOARD	FVR	FULL VOLTAGE REVERSING
BFF	BELOW FINISHED FLOOR	<b>G</b>	
BIL	BASIC INSULATION LEVEL	G OR GND	ELECTRICAL GROUND
BLDG	BUILDING	GC	GENERAL CONTRACTOR
BPIP	BOILER PLANT INSTRUMENTATION PANEL	GEN	GENERATOR
BRKR	BREAKER	GFCI	GROUND FAULT CIRCUIT INTERRUPTER
BYP	BYPASS	GTB	GROUND TERMINAL BOX
<b>C</b>		<b>H</b>	
C	CONDUIT	HID	HIGH INTENSITY DISCHARGE
CAB	CABINET	HOA	HAND-OFF-AUTOMATIC
CALC	CALCULATE	HP	HORSEPOWER
CAP	CAPACITY	HT	HEIGHT
CAT	CATALOG	HZ	HERTZ
CATV	COMMUNITY ANTENNA TELEVISION	<b>I</b>	
CCR	CONTROL CONTACTOR	IESNA	ILLUMINATION ENGINEERING SOCIETY OF NORTH AMERICA
CCTV	CLOSED CIRCUIT TELEVISION	IMC	INTERMEDIATE METAL CONDUIT
CD	CANDELA OR CONSTRUCTION DOCUMENTS	INCAND	INCANDESCENT
CF	CONTRACTOR FURNISHED	IR	INFRARED
CF/CI	CONTRACTOR FURNISHED / CONTRACTOR INSTALLED	IWH	INSTANTANEOUS WATER HEATER
CF/OI	CONTRACTOR FURNISHED / OWNER INSTALLED	<b>J</b>	
CFE	CONTRACTOR FURNISHED EQUIPMENT	J-BOX	JUNCTION BOX
CHW	CHILLED WATER	<b>K</b>	
CHWP	CHILLED WATER PUMP	KV	KILOVOLT
CKT	CIRCUIT	KVA	KILOVOLT-AMPERE
CKT BRKR	CIRCUIT BREAKER	KVAH	KILOVOLT-AMPERE PER HOUR
CLF	CURRENT LIMITING FUSE	KVAR	KILOVOLT-AMPERE REACTIVE
CLG	CEILING	KW	KILOWATT
CMU	CONCRETE MASONRY UNIT	KWH	KILOWATT HOUR
CO	CONTRACTING OFFICER	KWHM	KILOWATT HOUR METER
COAX	COAX CABLE	<b>L</b>	
COMM	COMMUNICATION	LED	LIGHT EMITTING DIODE
COMP	COMPARTMENT	LF	LINEAR FEET (FOOT)
CONC	CONCRETE	LM	LUMEN
CONT	CONTINUE	LP	LIGHT POLE
CONTR	CONTRACTOR	LPS	LOW PRESSURE SODIUM
COORD	COORDINATE	LRA	LOCKED ROTOR AMPS
COR	CONTRACTING OFFICER'S REPRESENTATIVE	LT	LIGHT
CPT	CONTROL POWER TRANSFORMER	LTG	LIGHTING
CRI	COLOR RENDERING INDEX	LTG PNL	LIGHTING PANEL
CT	CURRENT TRANSFORMER	LTNG	LIGHTNING
CTV	CABLE TELEVISION	LV	LOW VOLTAGE
CU	COPPER	<b>M</b>	
CU FT	CUBIC FEET	MATV	MASTER ANTENNA TELEVISION SYSTEM
CUR	CURRENT	MAX	MAXIMUM
<b>D</b>		MC	METAL-CLAD
DB	DECIBEL	MCA	MINIMUM CIRCUIT AMPS
DC	DIRECT CURRENT	MCB	MAIN CIRCUIT BREAKER
DCP	DIMMER CONTROL PANEL	MCC	MOTOR CONTROL CENTER
DEG C	DEGREES CELSIUS	MDP	MAIN DISTRIBUTION PANEL
DEG F	DEGREES FAHRENHEIT	MECH	MECHANICAL
DEMO	DEMOLITION	MG	MOTOR GENERATOR
DIAG	DIAGRAM	MH	MANHOLE
DISC	DISCONNECT	<b>N</b>	
DISTR	DISTRIBUTION	NA	NOT APPLICABLE
DISTR PNL	DISTRIBUTION PANEL	NC	NORMALLY CLOSED
DNR SW	DIMMER SWITCH	NEC	NATIONAL ELECTRIC CODE
DN	DOWN	NEMA	NATIONAL ELECTRICAL MANUFACTURERS ASSOCIATION

MIN	MINIMUM	<b>N</b>	
MLO	MAIN LUGS ONLY	NEC	NATIONAL ELECTRIC CODE
MOCP	MAXIMUM OVERCURRENT PROTECTION	NEMA	NATIONAL ELECTRICAL MANUFACTURERS ASSOCIATION
MT	MOUNT	NEUT OR N	NEUTRAL
MTD	MOUNTED	NFPA	NATIONAL FIRE PROTECTION ASSOCIATION
MTG	MOUNTING	NIC	NOT IN CONTRACT
MTS	MANUAL TRANSFER SWITCH	NL	NIGHT LIGHT
MV	MEDIUM VOLTAGE	NO	NORMALLY OPEN
MVA	MEGAVOLT-AMPERE	NS	NO SCALE
MW	MEGAWATT	NTS	NOT TO SCALE
<b>O</b>		<b>O</b>	
OC	ON CENTER	OD	OUTSIDE DIAMETER
OD	OUTSIDE DIAMETER	OL	OVERLOAD
OL	OVERLOAD	<b>P</b>	
<b>P</b>		P	POLE
PA	PUBLIC ADDRESS	PA	PUBLIC ADDRESS
PB	PULL BOX OR PANEL BOARD	PBPU	PREFABRICATED BEDSIDE PATIENT UNIT
PBPU	PREFABRICATED BEDSIDE PATIENT UNIT	PCB	POLYCHLORINATED BIPHENYL
PCB	POLYCHLORINATED BIPHENYL	PEC	PHOTOELECTRIC CELL
PEC	PHOTOELECTRIC CELL	PED	PEDESTAL
PED	PEDESTAL	PEND	PENDANT
PEND	PENDANT	PF	POWER FACTOR
PF	POWER FACTOR	PH	PHASE
PH	PHASE	PNL	PANEL
PNL	PANEL	PT	POTENTIAL TRANSFORMER
PT	POTENTIAL TRANSFORMER	PVC	POLYVINYL CHLORIDE (PLASTIC)
PVC	POLYVINYL CHLORIDE (PLASTIC)	PWR	POWER
PWR	POWER	<b>R</b>	
<b>R</b>		RCP	REFLECTED CEILING PLAN
RCP	REFLECTED CEILING PLAN	REC	RECESSED
REC	RECESSED	RECPT	RECEPTACLE
RECPT	RECEPTACLE	REQ	REQUIRED
REQ	REQUIRED	RGS	RIGID GALVANIZED STEEL
RGS	RIGID GALVANIZED STEEL	RM	ROOM
RM	ROOM	RMS	ROOT MEAN SQUARE
RMS	ROOT MEAN SQUARE	<b>S</b>	
<b>S</b>		SCC	SHORT CIRCUIT CAPACITY
SD	SMOKE DETECTOR	SES	SERVICE ENTRANCE SECTION
SES	SERVICE ENTRANCE SECTION	SF	SQUARE FOOT (FEET)
SF	SQUARE FOOT (FEET)	SHT	SHEET
SHT	SHEET	SI	INTERNATIONAL SYSTEM OF UNITS
SI	INTERNATIONAL SYSTEM OF UNITS	SPEC	SPECIFICATION
SPEC	SPECIFICATION	SPST	SINGLE POLE, SINGLE THROW
SPST	SINGLE POLE, SINGLE THROW	SURF	SURFACE
SURF	SURFACE	SW	SWITCH
SW	SWITCH	SWBD	SWITCHBOARD
SWBD	SWITCHBOARD	SWGR	SWITCHGEAR
SWGR	SWITCHGEAR	<b>T</b>	
<b>T</b>		TEL	TELEPHONE
TEL	TELEPHONE	TP	TWISTED PAIR
TP	TWISTED PAIR	TPS	TWISTED PAIR SHIELDED
TPS	TWISTED PAIR SHIELDED	TTB	TELEPHONE TERMINAL BOARD
TTB	TELEPHONE TERMINAL BOARD	TV	TELEVISION
TV	TELEVISION	TYP	TYPICAL
TYP	TYPICAL	<b>U</b>	
<b>U</b>		UFD	UNDERFLOOR DUCT
UFD	UNDERFLOOR DUCT	UGND	UNDERGROUND
UGND	UNDERGROUND	UL	UNDERWRITERS LABORATORY
UL	UNDERWRITERS LABORATORY	UON	UNLESS OTHERWISE NOTED
UON	UNLESS OTHERWISE NOTED	UPS	UNINTERRUPTIBLE POWER SUPPLY
UPS	UNINTERRUPTIBLE POWER SUPPLY	UTIL	UTILITY
UTIL	UTILITY	<b>V</b>	
<b>V</b>		V	VOLT
V	VOLT	VA	VOLT-AMPERE
VA	VOLT-AMPERE	VAR	VOLT-AMPERE REACTIVE
VAR	VOLT-AMPERE REACTIVE	VFD	VARIABLE FREQUENCY DRIVE
VFD	VARIABLE FREQUENCY DRIVE	VHA	VETERANS HEALTH ADMINISTRATION
VHA	VETERANS HEALTH ADMINISTRATION	VOLT	VOLTAGE
VOLT	VOLTAGE	<b>W</b>	
<b>W</b>		W	WATT
W	WATT	WH	WATER HEATER
WH	WATER HEATER	WP	WEATHERPROOF
WP	WEATHERPROOF	<b>X</b>	
<b>X</b>		XFER	TRANSFER
XFER	TRANSFER	XFMR	TRANSFORMER
XFMR	TRANSFORMER		

# ELECTRICAL GENERAL NOTES

- SPECIFICATIONS TAKE PRECEDENCE OVER DRAWINGS.
- MULTI-GANG BACKBOXES FOR DIFFERENT VOLTAGES AND TYPES OF EMERGENCY AND NORMAL BRANCH WIRING DEVICES SHALL HAVE DIVIDERS BETWEEN DEVICES.
- CORE DRILL AND SAW CUT, AS REQUIRED, FOR FLOOR AND WALL PENETRATIONS. SEAL REMAINING ANNULUS WITH FIRE CAULK PER SPECIFICATIONS.
- PROVIDE ACCESS DOORS OR PANELS FOR INSTALLATION BY GENERAL CONTRACTOR IN WALLS AND CEILINGS WHERE ACCESS IS REQUIRED TO CONCEALED ELECTRICAL BOXES AND DEVICES.
- ARMORED CABLE (AC) MAY BE USED FOR LAY-IN FIXTURE PIGTAILS. ARMORED CABLE (AC) SHALL NOT BE USED FOR BRANCH CIRCUIT HOMERUNS. ARMORED CABLE (AC) SHALL NOT BE USED WHERE MORE THAN THREE CONDUCTORS (PHASE/NEUTRAL/GROUND) ARE REQUIRED, WHERE EXPOSED, OR IN LENGTHS EXCEEDING 20 FEET EXCEPT FOR TEMPORARY WIRING.
- PROVIDE ALL ELECTRICAL WORK IN ACCORDANCE WITH THE 2021 NATIONAL ELECTRICAL CODE AND THE REQUIREMENTS OF THE VHA.
- COORDINATE ALL OUTAGES WITH VHA COR PER SPECS PRIOR TO WORK BEING DONE.

## ELECTRICAL GENERAL NOTES - DEMOLITION

- SEE GENERAL AND MECHANICAL DRAWINGS AND SPECIFICATIONS FOR PHASES OF DEMOLITION AND CONSTRUCTION. COORDINATE WITH GENERAL CONSTRUCTION.
- DISCONNECT AND REMOVE CONDUIT AND WIRE BACK TO OVERCURRENT PROTECTIVE DEVICE. COMPLETELY CUT/CAP CONDUITS IN CONCRETE SLAB AND IN THE AREA OF WORK PERIMETER. DISCONNECT AND REMOVE ALL ABANDONED CIRCUITS AND CONDUITS. PROVIDE CONDUIT AND WIRE AS REQUIRED FOR CONTINUITY OF CIRCUITS TO ANY EXISTING DEVICES TO REMAIN. COORDINATE AND VERIFY REQUIREMENTS WITHIN NEW AREA OF WORK.

## KEYNOTES



KEYNOTE

## NEW - EXISTING AND DEMO LINE TYPES

- NEW LINE TYPE
- EXISTING LINE TYPE
- DEMO LINE TYPE
- DEMO HATCH

9/30/2024 4:10:15 PM  
E:\390\220\_H\_Albona\_PA\_Steam\_VEG\MEP\_R19.rvt

100% CONSTRUCTION DOCUMENTS - REV 1	09/30/2024
<b>Issued:</b>	<b>Date:</b>

**CONSULTANTS:**

**ARCHITECT/ENGINEERS:**

750 W HAMPTON AVE  
SUITE 300  
ENGLEWOOD, CO 80110  
(720) 950-6007  
WWW.VALHALLAENGINEERING.COM

**STAMP:**

10/01/2024



**Drawing Title**  
ELECTRICAL ABBREVIATIONS AND GENERAL NOTES

**Approved:** Project Director

**Phase**  
100% CONSTRUCTION DOCUMENT

**Project Title**  
REPLACE STEAM SYSTEMS

**Location**  
2907 PLEASANT VALLEY BLVD ALTOONA, PA 16602

**Issue Date**  
09/30/2024

**Checked**  
TL

**Drawn**  
MB

**Project Number**  
503-19-112

**Building Number**  
1

**Drawing Number**  
E-001



ELECTRICAL SYMBOLS - DIAGRAM

Table listing electrical symbols for diagrams: DELTA CONNECTION, MOTOR, SINGLE-PHASE, MOTOR, THREE-PHASE, TRANSFORMER, WYE CONNECTION, PULL BOX, MANHOLE, PRESSURE SWITCH-CLOSE ON INCREASE, PRESSURE SWITCH-OPEN ON INCREASE, SWITCH, MULTIPPOSITION, SWITCH, NORMALLY CLOSED FLOAT, SWITCH, NORMALLY CLOSED FOOT OPERATED, SWITCH, NORMALLY CLOSED LIMIT, SWITCH, NORMALLY CLOSED TEMPERATURE ACTIVATED, SWITCH, NORMALLY CLOSED TIME DELAY, SWITCH, NORMALLY OPEN FLOAT, SWITCH, NORMALLY OPEN LIMIT, SWITCH, NORMALLY OPEN TEMPERATURE ACTIVATED, SWITCH, NORMALLY OPEN TIME DELAY, SWITCH, SINGLE BREAK, NORMALLY CLOSED RELAY CONTACT, NORMALLY OPEN RELAY CONTACT, FUSE WITH RATING, MOLDED CASE CIRCUIT BREAKER, LOW-VOLTAGE DRAWOUT AIR CIRCUIT BREAKER, MEDIUM-VOLTAGE OIL CIRCUIT BREAKER, MEDIUM-VOLTAGE DRAWOUT AIR CIRCUIT BREAKER, SWITCH AND FUSE UNIT, FUSED DRAWOUT POTENTIAL TRANSFORMER, RELAY, LETTER INDICATES RELAY TYPE, DISCONNECT SWITCH, FUSED, DISCONNECT SWITCH, UNFUSED, VAV, FUSIBLE LINK, STARTER, COMBINATION WIDISCONNECT SWITCH, STARTER OR MOTOR CONTROLLER, VARIABLE FREQUENCY DRIVE, GENERATOR, POWER, BATTERY, CAPACITOR, POTHEAD, STRESS CONE, LIGHTNING ARRESTOR, RECTIFIER, CATHODIC PROTECTION, AMMETER, VOLTMETER, WATTMETER, WATT-HOUR METER, TRANSFORMER, PLAN, WYE CONNECTION, DUCT, CELL FLOOR HEADER, DUCT, TROLLEY, DUCT, UNDERFLOOR JUNCTION BOX, EARTH GROUND, JUNCTION BOX, LADDER CABLE TRAY

ELECTRICAL SYMBOLS - POWER PLAN

Table listing electrical symbols for power plans: BRANCH CIRCUIT HOMERUN, WIREWAY, RIGID CONDUIT LINE, DIRECT BURIAL CABLE, POWER DUCT, SUBSTATION, HI VOLTAGE SWITCH ON CONCRETE PAD, LOW VOLTAGE SWITCH ON CONCRETE PAD, DUAL POWER AND TELECOMMUNICATIONS MANHOLE, FLOOR OUTLET, RECEPTACLE, BUSWAY, FLOOR OUTLET, DATA COMMUNICATION, OUTLET, DATA COMMUNICATION, PUSH BUTTON / EMERGENCY SHUT OFF, DISTRIBUTION PANEL, LIGHTING PANEL, PANELBOARD CABINET, FLUSH MOUNTED, PANELBOARD CABINET, SURFACE MOUNTED, GROUNDING BAR, RECEPTACLE, CLOCK HANGER, RECEPTACLE, DUPLEX (MOUNT 18" AFF. UNLESS NOTED OTHERWISE), RECEPTACLE, DUPLEX ON EMERGENCY POWER, RECEPTACLE, DUPLEX WITH GROUND FAULT CIRCUIT INTERRUPTER, RECEPTACLE, DUPLEX COUNTER HEIGHT, RECEPTACLE, QUADRAPLEX, RECEPTACLE, SINGLE, RECEPTACLE, SINGLE WITH SWITCH, RECEPTACLE, QUADRAPLEX ON EMERGENCY POWER, RECEPTACLE, SPECIAL PURPOSE, RECEPTACLE, SWITCHED DUPLEX, DROP CORD, SINGLE CONVENIENCE OUTLET, ELECTRICAL STRIP MOLD, 3-GANG COMPARTMENT BOX, TIME CLOCK, VENTILATOR OR FAN COIL UNIT OUTLET, CONDUIT TERMINATED 6" AFF IN STANDARD BOX, CONDUIT TERMINATED W/COUPLING, SWITCH, FUSED SWITCH, KEY OPERATED, LOCK, LOW VOLTAGE MASTER, MANUAL MOTOR STARTING, MOMENTARY CONTACT, MOTOR SNAP WITH PILOT LIGHT, WITH PILOT LIGHT, EXPLOSION PROOF, HEADWALL, DUEL TECHNOLOGY

COMMUNICATION SYMBOLS:

Table listing communication symbols: CARD READER, ELECTRIC DOOR STRIKE, MAGNETIC DOOR POSITION SWITCH, VANDAL RESISTANT 1080P DOME IP CAMERA, FOUR SQUARE JUNCTION BOX, SECURITRON IMXDA MAGNETIC LOCK, USP HUB2SA REMOTE DOOR RELEASE BUTTON, REQUEST TO EXIT MOTION DETECTOR, CCTV SYSTEM WORKSTATION, DURESS BUTTON, CODE BLUE BUTTON INTEGRATED NURSE CALL SYSTEM, NURSE CALL MASTER CONSOLE, ETHERNET NETWORK SWITCH, WIRELESS ACCESS POINT, DATA BOX, OUTLET, COMBINATION TELEPHONE/DATA COMMUNICATION, CABLE TELEVISION LINE, CLOSED CIRCUIT TELEVISION LINE, FIBER OPTICS LINE, TELEPHONE LINE, INTERCOM LINE, SOUND LINE, NURSE CALL LINE, RADIO CONDUIT RUN, TELECOMMUNICATIONS MANHOLE, FLOOR RECEPTACLE, TELEPHONE, OUTLET TELEPHONE, OUTLET DATA ONLY, SPEAKER, CEILING MOUNTED, SPEAKER, WALL MOUNTED, RADIO CHANNEL SELECTOR FACILITIES, SPEAKER PROGRAM SELECTOR SWITCH & VOLUME CONTROL, OUTLET, TELEVISION, NURSE'S CALL MASTER STATION, NURSE CALL TERMINAL CABINET, NURSE CALL STATION, NURSE'S CALL DOME LIGHT, TELEPHONE TERMINAL CABINET, TELEPHONE BACKBOARD, 3-POLE TWIST-LOCK RECEPTACLE, REMOTE DICTATING OUTLET, INTERCOM STATION, INTERCOM STAFF STATION

ELECTRICAL SYMBOLS - LIGHTING PLAN

Table listing electrical symbols for lighting plans: SWITCH, RECESSED DOWNLIGHT FIXTURE, RECESSED TROFFER LIGHT FIXTURE, CEILING SURFACE MOUNTED LIGHT FIXTURE, WALL SURFACE MOUNTED LIGHT FIXTURE, LIGHT FIXTURE POWER CONNECTION DESIGNATIONS, OPEN - NORMAL POWER CIRCUIT, SHADED - LIFE SAFETY EMERGENCY POWER CIRCUIT, HATCHED - CRITICAL POWER CIRCUIT, DUAL PASSIVE INFRARED / MICROPHONIC TECHNOLOGY, EXIT SIGN, LIGHTING, LIGHTING, STREET LIGHT, LIGHT POLE, LIGHT POLE, LIGHTING, EXTERIOR BUILDING, EXTERIOR FLOOD LIGHT, LIGHT FIXTURE, BOLLARD, LIGHT FIXTURE, DIRECTIONAL, NURSE CALL STATION, NURSE'S CALL DOME LIGHT, TELEPHONE TERMINAL CABINET, TELEPHONE BACKBOARD, 3-POLE TWIST-LOCK RECEPTACLE, REMOTE DICTATING OUTLET, INTERCOM STATION, INTERCOM STAFF STATION

9/30/2024 4:10:15 PM  
E:\300\2024\14\_Albana\_PA\_Steam\VEG\MEP\_R19.rvt  
VA FORM 08 - 6231

100% CONSTRUCTION DOCUMENTS - REV 1 09/30/2024 CONSULTANTS: ARCHITECT/ENGINEERS: VALHALLA ENGINEERING GROUP, LLC 750 W HAMPODEN AVE SUITE 300 ENGLEWOOD, CO 80110 (720) 955-8307 WWW.VALLHALLAENGINEERING.COM STAMP: 10/01/2024 U.S. Department of Veterans Affairs Drawing Title: ELECTRICAL SYMBOLS Phase: 100% CONSTRUCTION DOCUMENT Project Title: REPLACE STEAM SYSTEMS Project Number: 503-19-112 Building Number: 1 Drawing Number: E-002 Location: 2907 PLEASANT VALLEY BLVD ALTOONA, PA 16602 Issue Date: 09/30/2024 Checked: TL Drawn: MB



A  
B  
C  
D  
E  
F

A.1 B.1 C.1 D.1 E.1 F.1 G.1



1 PLAN NORTH BASEMENT - ELECTRICAL DEMOLITION PLAN  
1/8" = 1'-0"

**GENERAL NOTES**

- A. REFER TO SPECIFICATIONS FOR FURTHER REQUIREMENTS IN THE SCOPE.
- B. REFER TO 'GC' SERIES SHEETS FOR WORK PHASING REQUIREMENTS.
- C. CONTRACTOR SHALL FIELD VERIFY EXISTING CONDITIONS AND REPORT DISCREPANCIES TO THE VHA COR BEFORE PROCEEDING WITH WORK.
- D. REFER TO E-001 AND E-002 FOR ADDITIONAL GENERAL NOTES AND SYMBOLS.
- E. REFER TO HAZARDOUS MATERIAL SURVEY IN THE SPECIFICATIONS. DO NOT PROCEED WITH DEMOLITION OR DISTURBANCE OF ITEMS CONTAINING HAZARDOUS MATERIALS UNTIL ABATEMENT IN ACCORDANCE WITH HAZARDOUS MATERIAL ABATEMENT SPECIFICATIONS HAS BEEN PERFORMED.
- F. CONTRACTOR SHALL RELABEL OCPD'S NOT REUSED FOR NEW CIRCUITS AS SPARE AND PROVIDE NEW UPDATED TYPE-WRITTEN PANEL DIRECTORY.

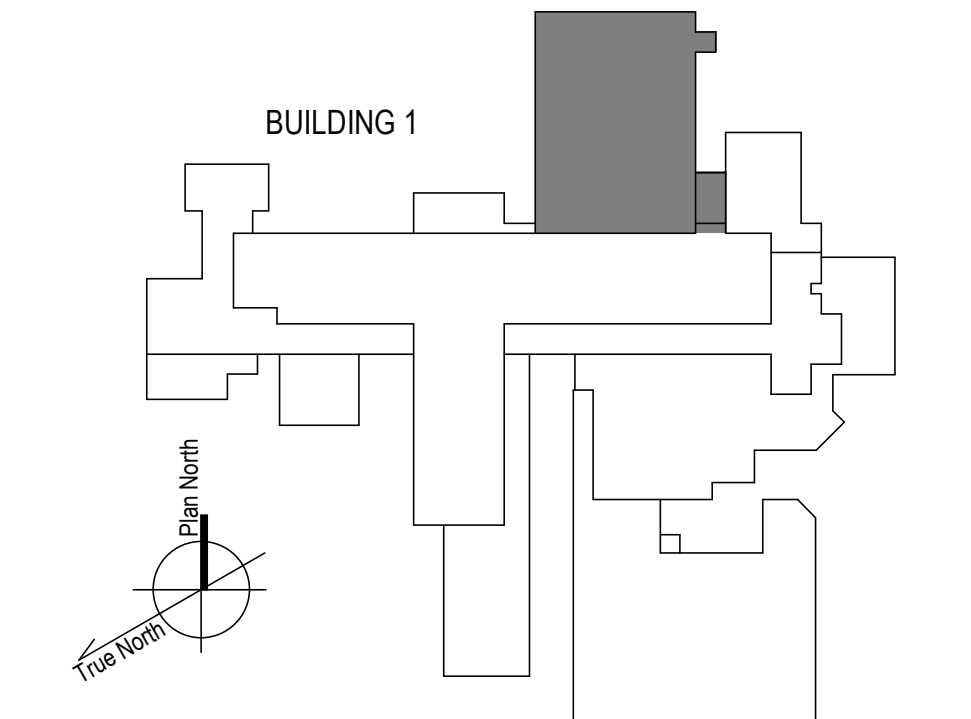
**KEYNOTES**

1. DISCONNECT AND REMOVE POWER FROM EXISTING ELECTRIC STEAM TRAP MONITOR BACK TO PANEL PH IN ROOM 1F62. PRESERVE CONDUIT AND PATHWAY FOR REUSE.

**FIRE-RESISTIVE RATED WALL TYPE LEGEND**

- - - - 2-HOUR FIRE SEPARATION
- - - - 1-HOUR FIRE SEPARATION
- - - - 1-HOUR SMOKE BARRIER
- - - - 0-HOUR SMOKE RESISTIVE

**KEY PLAN**



100% CONSTRUCTION DOCUMENTS - REV 1	09/30/2024
Issued:	Date:

**CONSULTANTS:**

**ARCHITECT/ENGINEERS:**

**VALHALLA ENGINEERING GROUP, LLC**

750 W HAMPODEN AVE  
SUITE 300  
ENGLEWOOD, CO 80110  
(720) 550-8307  
WWW.VALLHALLAENGINEERING.COM

VEG 20.14

**STAMP:**

MITCH BIBLE  
ENGINEER  
10/01/2024



Drawing Title  
**PLAN NORTH BASEMENT - ELECTRICAL DEMOLITION PLAN**

Approved: Project Director

Phase  
**100% CONSTRUCTION DOCUMENT**

Project Title REPLACE STEAM SYSTEMS	Project Number 503-19-112
Location 2907 PLEASANT VALLEY BLVD ALTOONA, PA 16602	Building Number 1
Issue Date 09/30/2024	Checked RA
	Drawn GH
	Drawing Number ED102

**GENERAL NOTES**

- A. REFER TO SPECIFICATIONS FOR FURTHER REQUIREMENTS IN THE SCOPE.
- B. REFER TO 'GC' SERIES SHEETS FOR WORK PHASING REQUIREMENTS.
- C. CONTRACTOR SHALL FIELD VERIFY EXISTING CONDITIONS AND REPORT DISCREPANCIES TO THE VHA COR BEFORE PROCEEDING WITH WORK.
- D. REFER TO E-001 AND E-002 FOR ADDITIONAL GENERAL NOTES AND SYMBOLS.
- E. REFER TO HAZARDOUS MATERIAL SURVEY IN THE SPECIFICATIONS. DO NOT PROCEED WITH DEMOLITION OR DISTURBANCE OF ITEMS CONTAINING HAZARDOUS MATERIALS UNTIL ABATEMENT IN ACCORDANCE WITH HAZARDOUS MATERIAL ABATEMENT SPECIFICATIONS HAS BEEN PERFORMED.
- F. CONTRACTOR SHALL RELABEL OCPD'S NOT REUSED FOR NEW CIRCUITS AS SPARE AND PROVIDE NEW UPDATED TYPE-WRITTEN PANEL DIRECTORY.

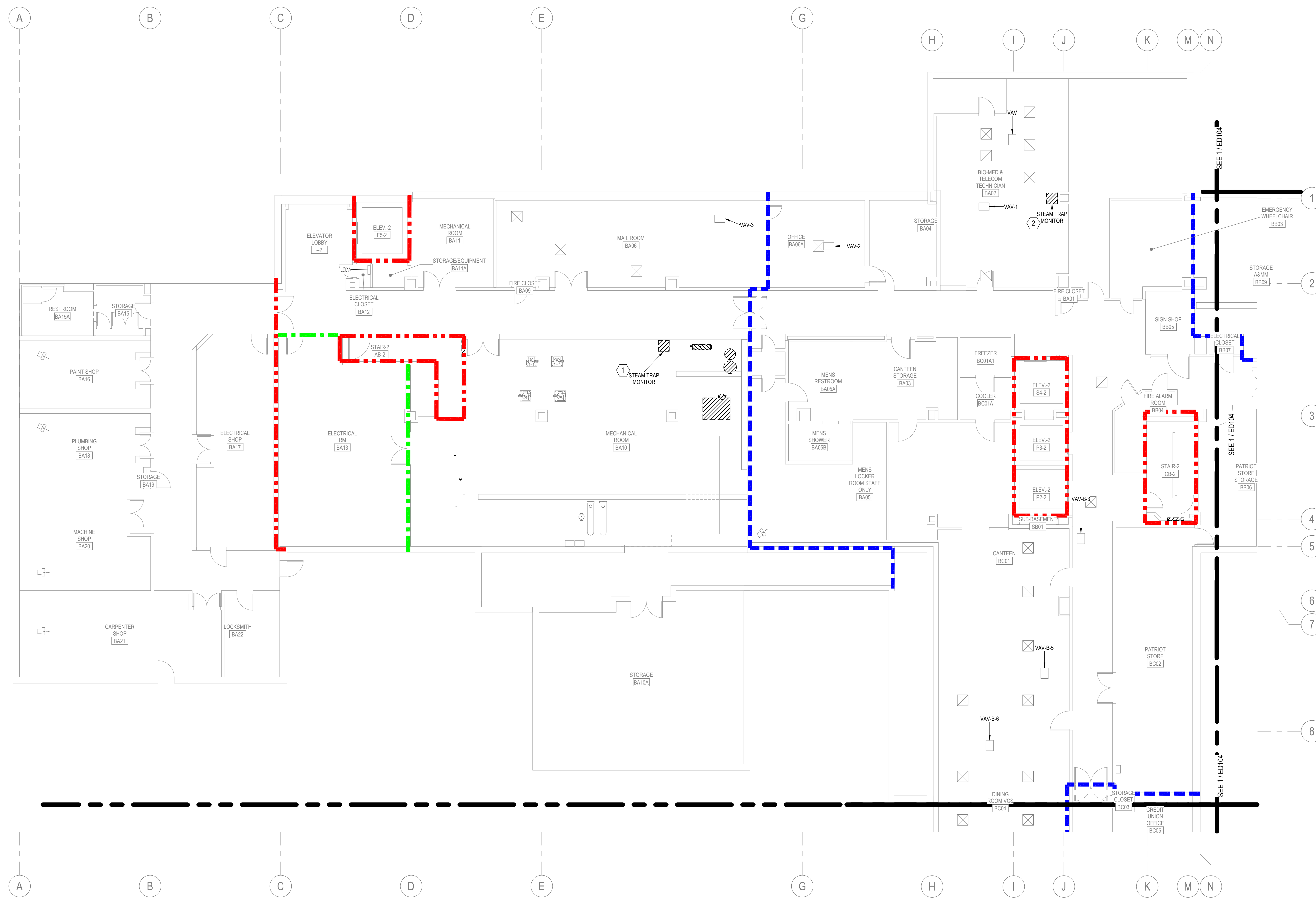
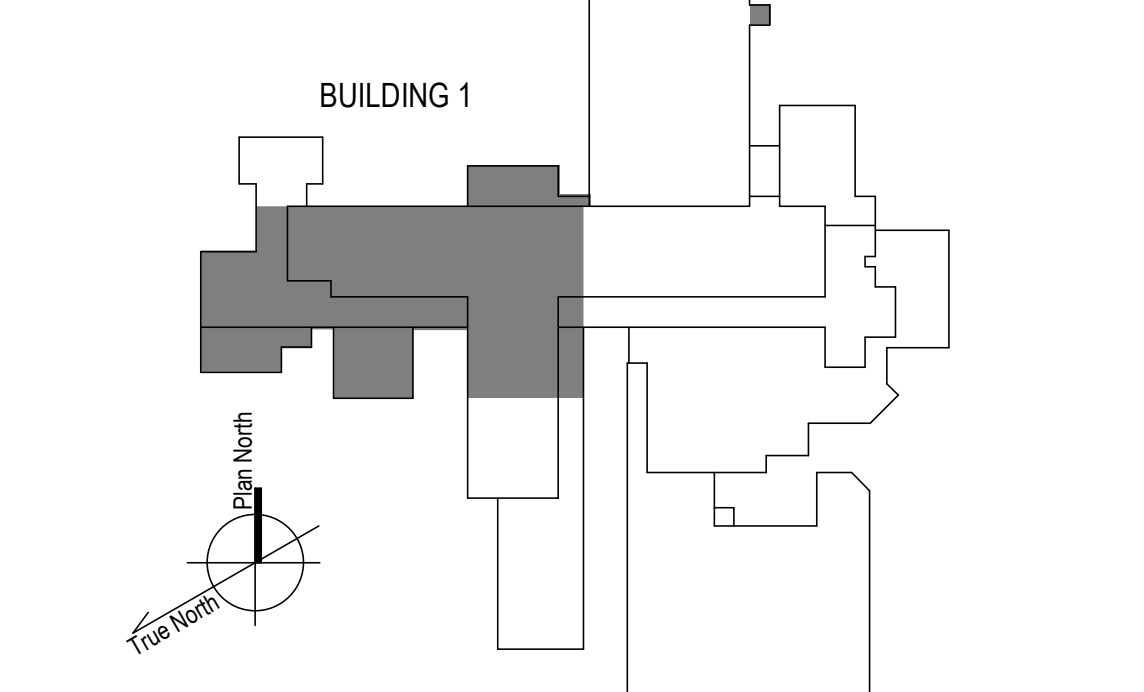
**KEYNOTES**

1. DISCONNECT AND REMOVE POWER FROM EXISTING ELECTRIC STEAM TRAP MONITOR BACK TO PANEL LBA-9. PRESERVE CONDUIT AND PATHWAY FOR REUSE.
2. DISCONNECT AND REMOVE POWER FROM EXISTING ELECTRIC STEAM TRAP MONITOR BACK TO PANEL SBD1-25. PRESERVE CONDUIT AND PATHWAY FOR REUSE.

**FIRE-RESISTIVE RATED WALL TYPE LEGEND**

- - - 2-HOUR FIRE SEPARATION
- - - 1-HOUR FIRE SEPARATION
- - - 1-HOUR SMOKE BARRIER
- - - 0-HOUR SMOKE RESISTIVE

**KEY PLAN**



1 PLAN WEST BASEMENT - ELECTRICAL DEMOLITION PLAN  
1/8" = 1'-0"

100% CONSTRUCTION DOCUMENTS - REV 1	09/30/2024
Issued:	Date:

**CONSULTANTS:**

**ARCHITECT/ENGINEERS:**

**VALHALLA ENGINEERING GROUP, LLC**

750 W HAMPODEN AVE  
SUITE 300  
ENGLEWOOD, CO 80110  
(720) 550-8307  
WWW.VALHALLAENGINEERING.COM

VEG 20.14

**STAMP:**

MITCH BIBLE  
ENGINEER  
10/01/2024



**Drawing Title**

PLAN WEST BASEMENT - ELECTRICAL DEMOLITION PLAN

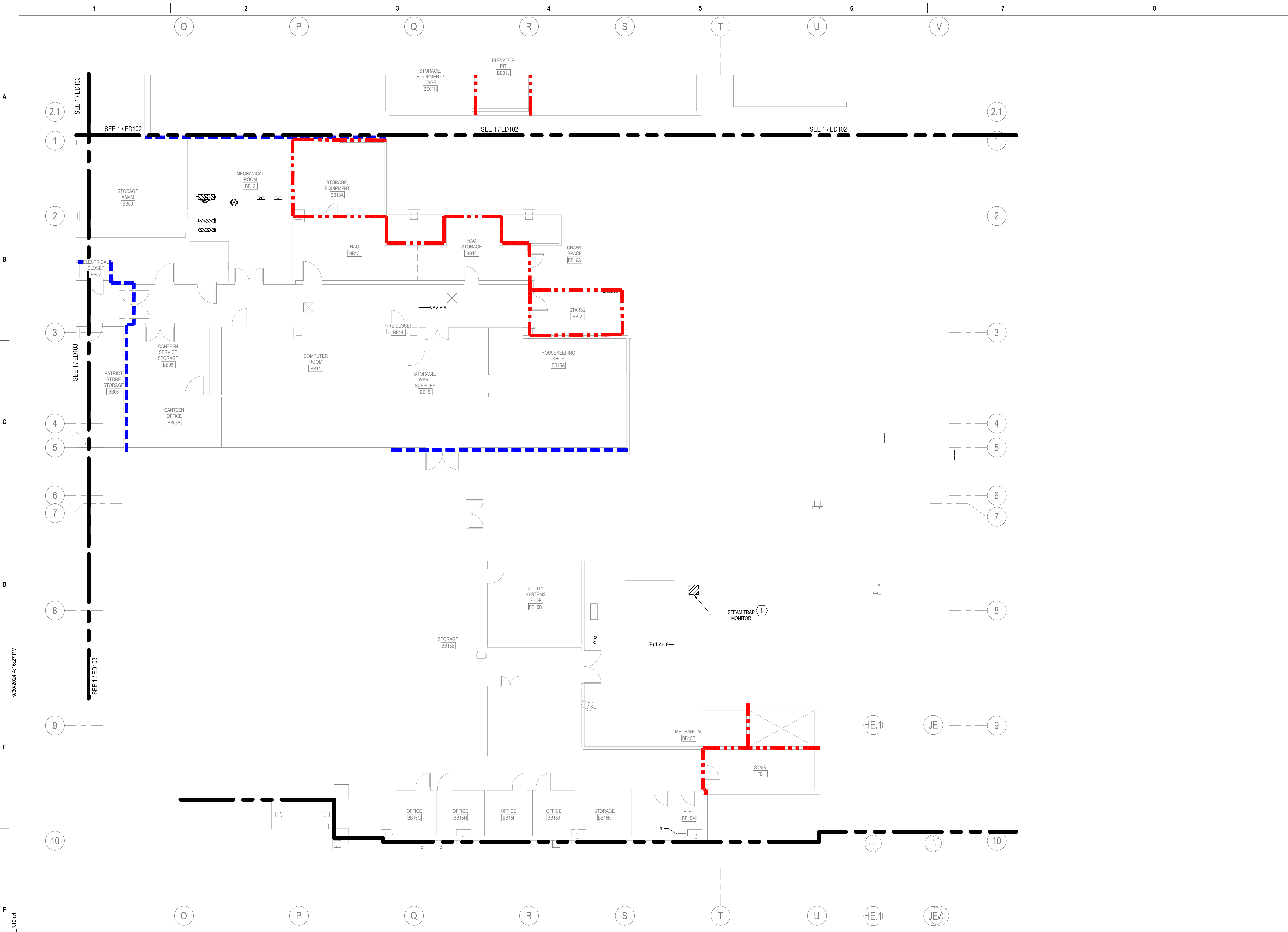
Approved: Project Director

**Phase**

100% CONSTRUCTION DOCUMENT

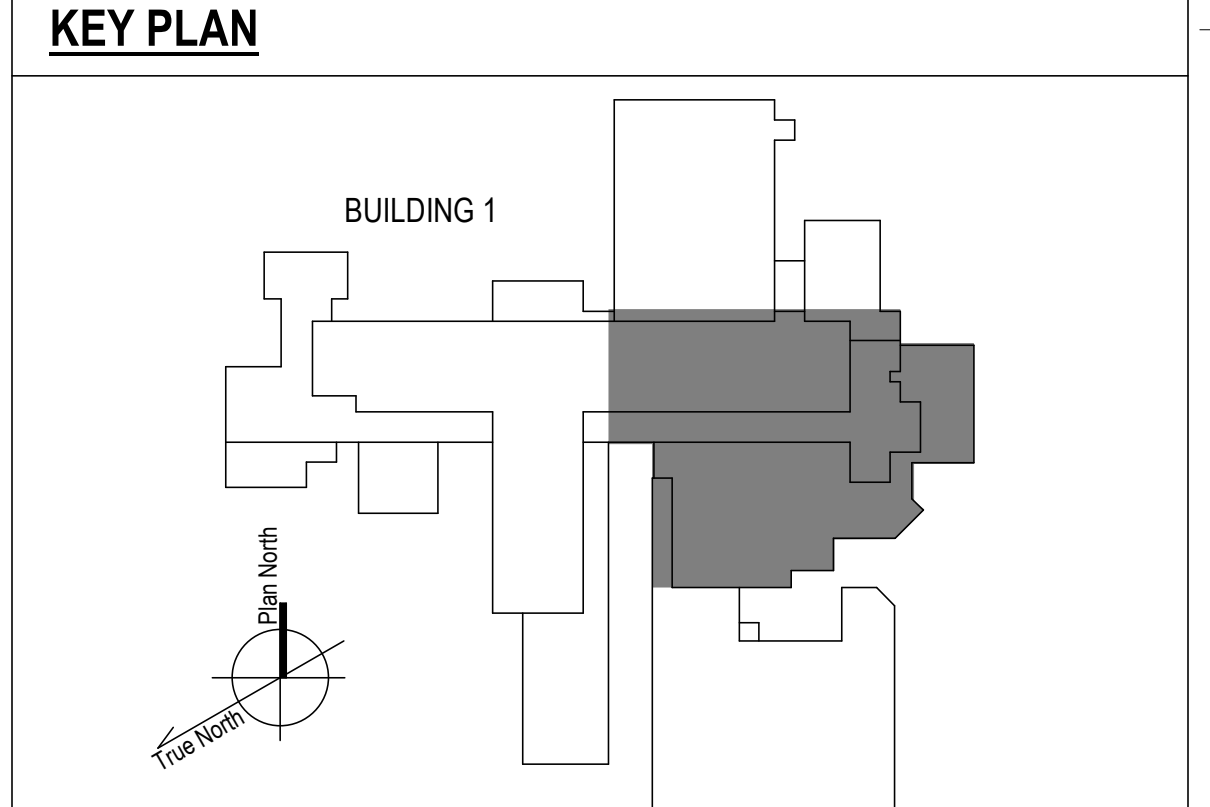
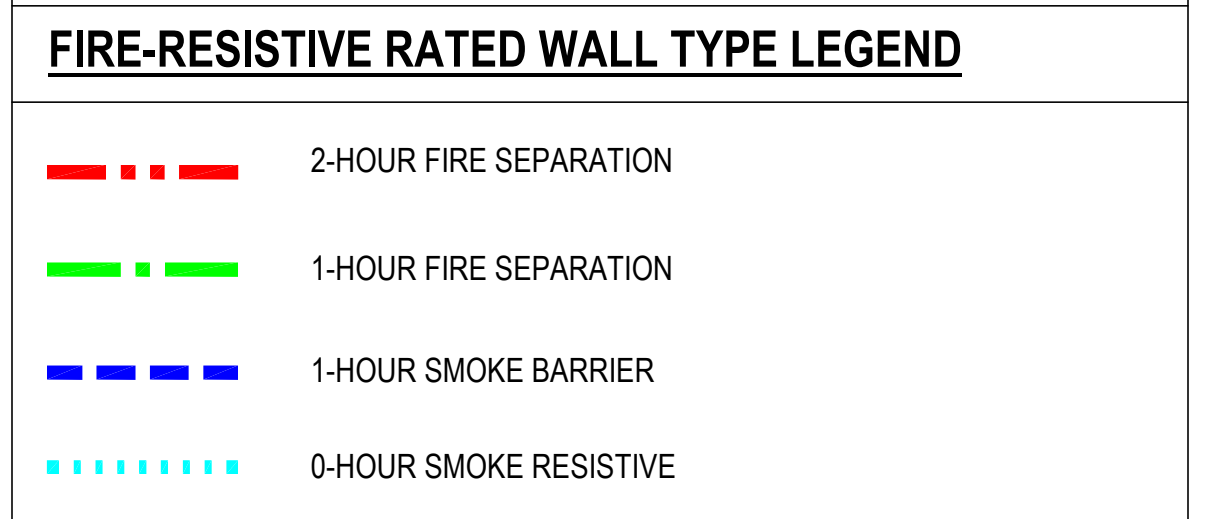
<b>Project Title</b>	REPLACE STEAM SYSTEMS	<b>Project Number</b>	503-19-112
<b>Location</b>	2907 PLEASANT VALLEY BLVD ALTOONA, PA 16602	<b>Building Number</b>	1
<b>Issue Date</b>	09/30/2024	<b>Checked</b>	RA
		<b>Drawn</b>	GH
		<b>Drawing Number</b>	ED103





- GENERAL NOTES**
- A. REFER TO SPECIFICATIONS FOR FURTHER REQUIREMENTS IN THE SCOPE.
  - B. REFER TO 'GC' SERIES SHEETS FOR WORK PHASING REQUIREMENTS.
  - C. CONTRACTOR SHALL FIELD VERIFY EXISTING CONDITIONS AND REPORT DISCREPANCIES TO THE VHA COR BEFORE PROCEEDING WITH WORK.
  - D. REFER TO E-001 AND E-002 FOR ADDITIONAL GENERAL NOTES AND SYMBOLS.
  - E. REFER TO HAZARDOUS MATERIAL SURVEY IN THE SPECIFICATIONS. DO NOT PROCEED WITH DEMOLITION OR DISTURBANCE OF ITEMS CONTAINING HAZARDOUS MATERIALS UNTIL ABATEMENT IN ACCORDANCE WITH HAZARDOUS MATERIAL ABATEMENT SPECIFICATIONS HAS BEEN PERFORMED.
  - F. CONTRACTOR SHALL RELABEL OCPD'S NOT REUSED FOR NEW CIRCUITS AS SPARE AND PROVIDE NEW UPDATED TYPE-WRITTEN PANEL DIRECTORY.

- KEYNOTES**
- 1. DISCONNECT AND REMOVE POWER FROM EXISTING ELECTRIC STEAM TRAP MONITOR BACK TO PANEL BP-25. PRESERVE CONDUIT AND PATHWAY FOR REUSE.



1 PLAN EAST BASEMENT - ELECTRICAL DEMOLITION PLAN  
1/8" = 1'-0"

100% CONSTRUCTION DOCUMENTS - REV 1		09/30/2024
Issued:	Date:	

**CONSULTANTS:**

**ARCHITECT/ENGINEERS:**

**VALHALLA ENGINEERING GROUP, LLC**

750 W HAMPTON AVE  
SUITE 300  
ENGLEWOOD, CO 80110  
(720) 550-8307  
WWW.VALHALLAENGINEERING.COM

VEG 20.14



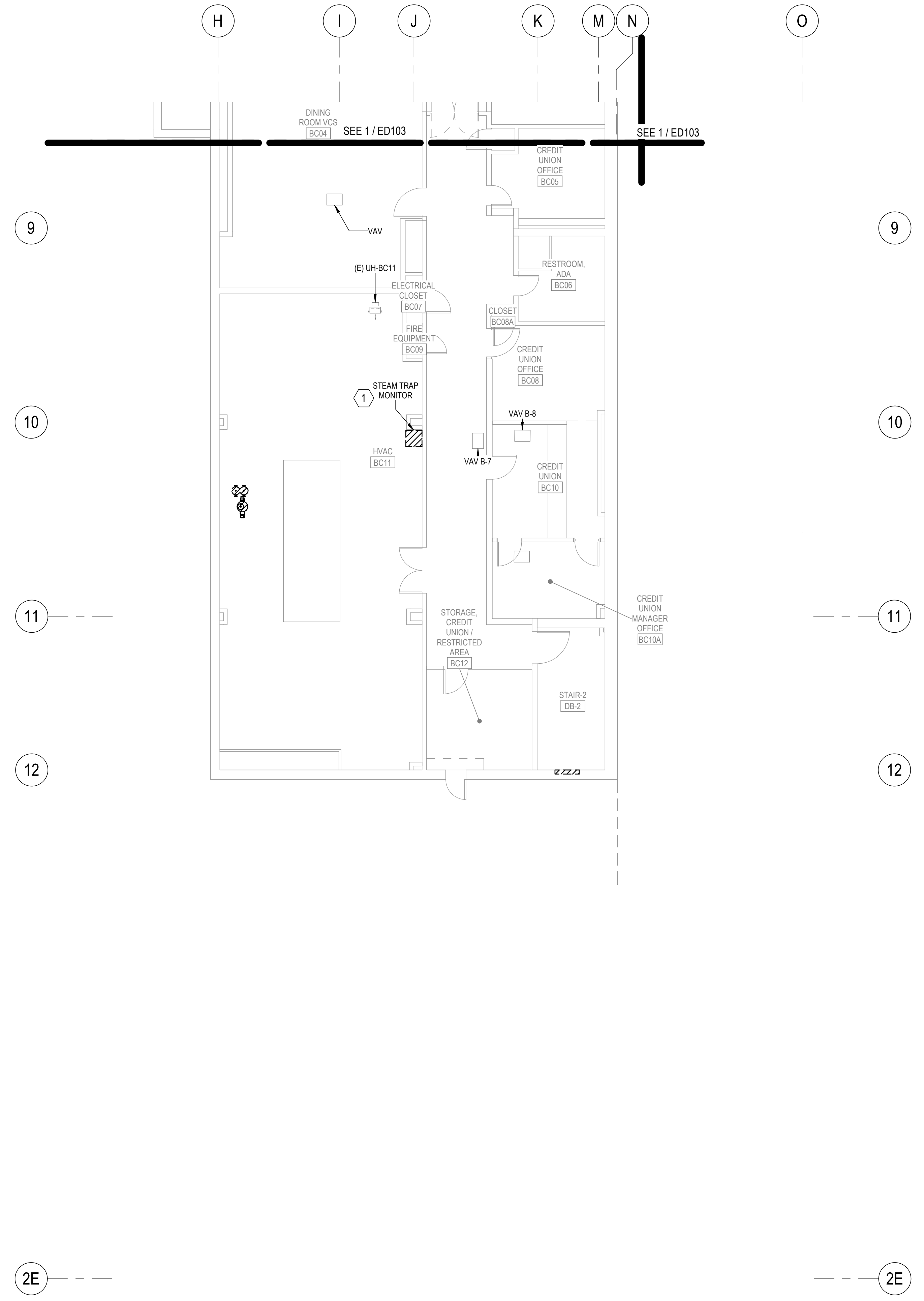
Drawing Title  
**PLAN EAST BASEMENT - ELECTRICAL DEMOLITION PLAN**

Approved: Project Director

Phase  
**100% CONSTRUCTION DOCUMENT**

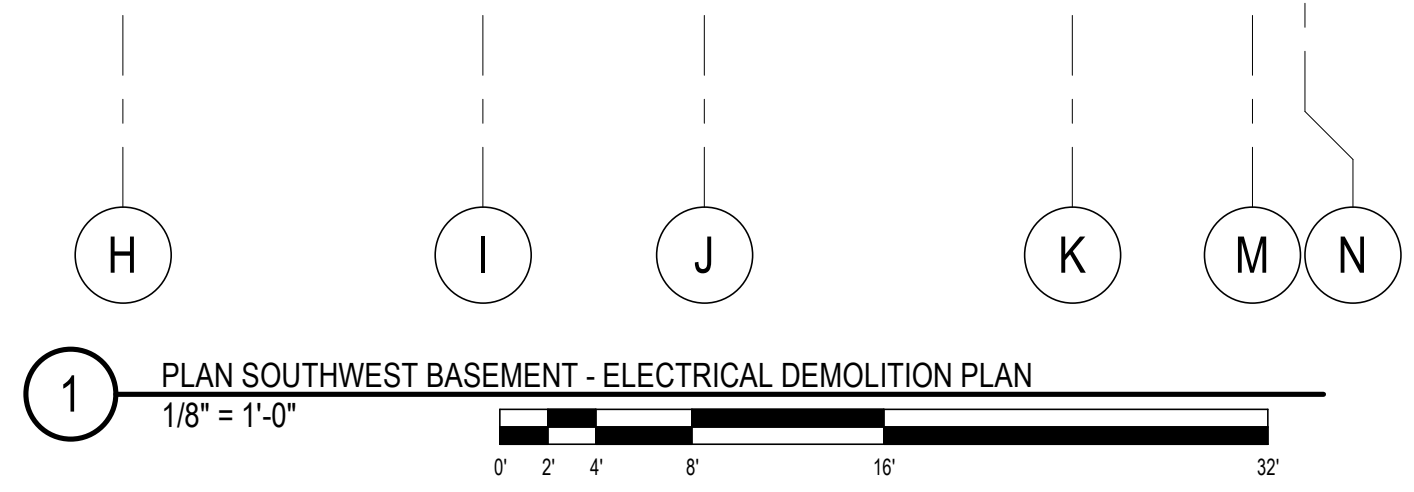
Project Title <b>REPLACE STEAM SYSTEMS</b>	Project Number <b>503-19-112</b>
Location 2907 PLEASANT VALLEY BLVD ALTOONA, PA 16602	Building Number <b>1</b>
Issue Date <b>09/30/2024</b>	Checked <b>RA</b>
	Drawn <b>GH</b>
Drawing Number <b>ED104</b>	

A  
B  
C  
D  
E  
F



- GENERAL NOTES**
- A. REFER TO SPECIFICATIONS FOR FURTHER REQUIREMENTS IN THE SCOPE.
  - B. REFER TO 'GC' SERIES SHEETS FOR WORK PHASING REQUIREMENTS.
  - C. CONTRACTOR SHALL FIELD VERIFY EXISTING CONDITIONS AND REPORT DISCREPANCIES TO THE VHA COR BEFORE PROCEEDING WITH WORK.
  - D. REFER TO E-001 AND E-002 FOR ADDITIONAL GENERAL NOTES AND SYMBOLS.
  - E. REFER TO HAZARDOUS MATERIAL SURVEY IN THE SPECIFICATIONS. DO NOT PROCEED WITH DEMOLITION OR DISTURBANCE OF ITEMS CONTAINING HAZARDOUS MATERIALS UNTIL ABATEMENT IN ACCORDANCE WITH HAZARDOUS MATERIAL ABATEMENT SPECIFICATIONS HAS BEEN PERFORMED.
  - F. CONTRACTOR SHALL RELABEL OCPD'S NOT REUSED FOR NEW CIRCUITS AS SPARE AND PROVIDE NEW UPDATED TYPE-WRITTEN PANEL DIRECTORY.

- KEYNOTES**
- 1. DISCONNECT AND REMOVE POWER FROM EXISTING ELECTRIC STEAM TRAP MONITOR TRAP BACK TO PANEL. PRESERVE CONDUIT AND PATHWAY FOR REUSE.



1 PLAN SOUTHWEST BASEMENT - ELECTRICAL DEMOLITION PLAN  
1/8" = 1'-0"

100% CONSTRUCTION DOCUMENTS - REV 1	09/30/2024	CONSULTANTS:	ARCHITECT/ENGINEERS: <b>VALHALLA ENGINEERING GROUP, LLC</b> 750 W HAMPODEN AVE SUITE 300 ENGLEWOOD, CO 80110 (720) 550-6307 WWW.VALHALLAENGINEERING.COM	STAMP: 		Drawing Title	Phase	Project Title	Project Number
	Issued:					Date:	PLAN SOUTHWEST BASEMENT - ELECTRICAL DEMOLITION PLAN	100% CONSTRUCTION DOCUMENT	REPLACE STEAM SYSTEMS
VA FORM 08 - 6231	1	2	3	4	5	6	7	8	9
						Approved: Project Director		Location 2907 PLEASANT VALLEY BLVD ALTOONA, PA 16602	Building Number 1
								Issue Date 09/30/2024	Checked RA
								Drawn GH	Drawing Number ED105

9/30/2024 4:16:31 PM  
B:\300\20\_14\_Altونا\_PA\_Sham20\_14\_Altونا\_PA\_Sham20\_14\_VEG\MEP\_R19.rvt





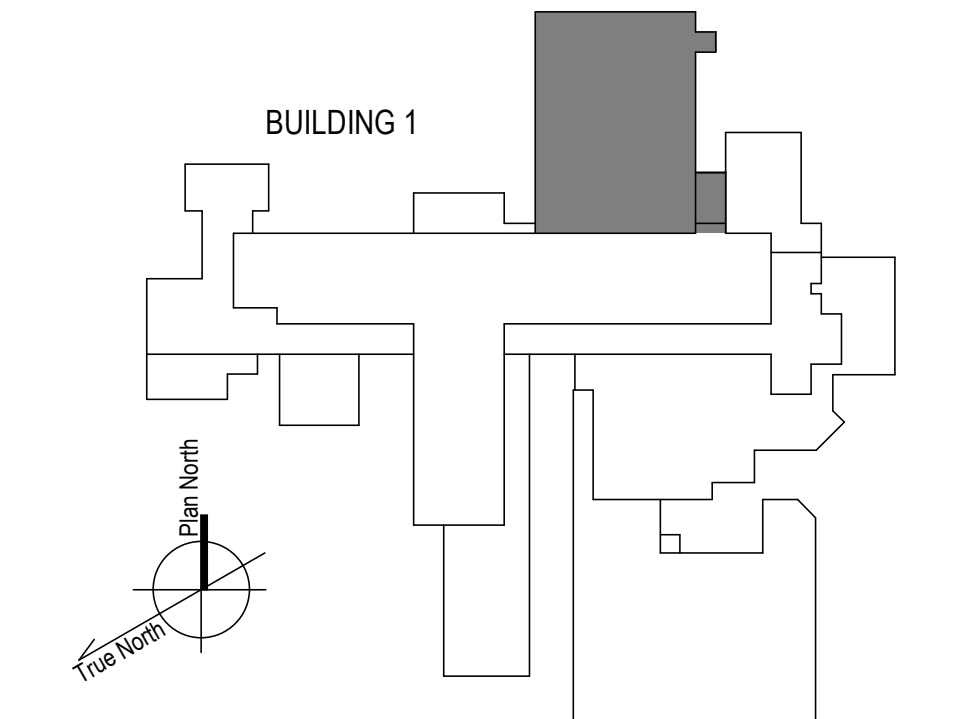
**GENERAL NOTES**

- A. REFER TO SPECIFICATIONS FOR FURTHER REQUIREMENTS IN THE SCOPE.
- B. REFER TO 'GC' SERIES SHEETS FOR WORK PHASING REQUIREMENTS.
- C. CONTRACTOR SHALL FIELD VERIFY EXISTING CONDITIONS AND REPORT DISCREPANCIES TO THE VHA COR BEFORE PROCEEDING WITH WORK.
- D. REFER TO E-001 AND E-002 FOR ADDITIONAL GENERAL NOTES AND SYMBOLS.
- E. REFER TO HAZARDOUS MATERIAL SURVEY IN THE SPECIFICATIONS. DO NOT PROCEED WITH DEMOLITION OR DISTURBANCE OF ITEMS CONTAINING HAZARDOUS MATERIALS UNTIL ABATEMENT IN ACCORDANCE WITH HAZARDOUS MATERIAL ABATEMENT SPECIFICATIONS HAS BEEN PERFORMED.
- F. CONTRACTOR SHALL RELABEL OCPD'S NOT REUSED FOR NEW CIRCUITS AS SPARE AND PROVIDE NEW UPDATED TYPE-WRITTEN PANEL DIRECTORY.

**KEYNOTES**

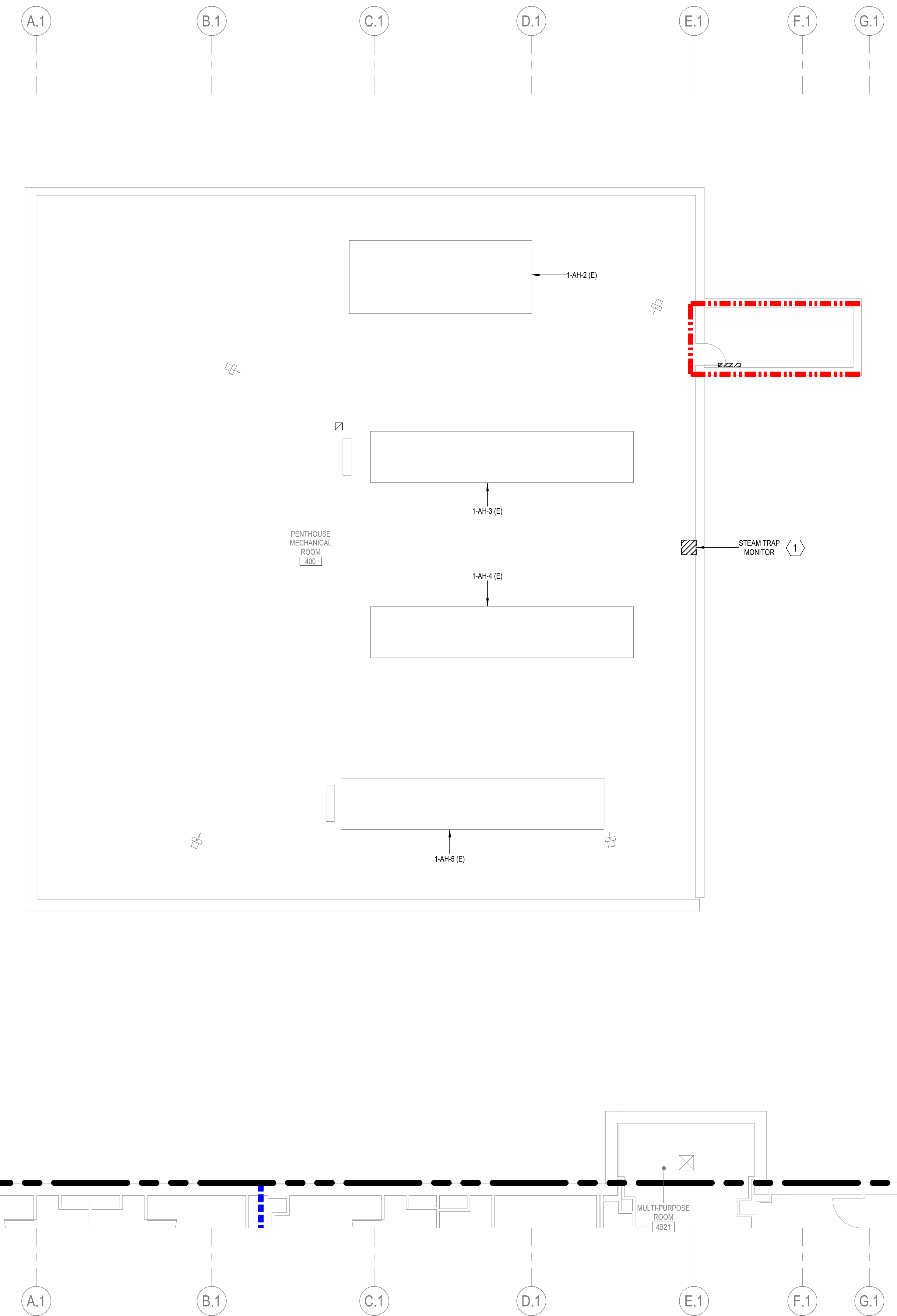
1. DISCONNECT AND REMOVE POWER FROM EXISTING ELECTRIC STEAM TRAP MONITOR BACK TO PANEL C6P1E-24 IN ROOM 1G03. PRESERVE CONDUIT AND PATHWAY FOR REUSE.

**KEY PLAN**

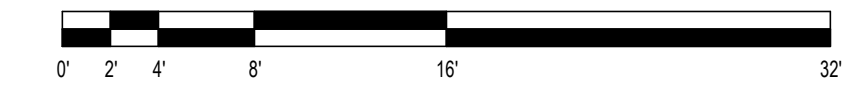


<p>100% CONSTRUCTION DOCUMENTS - REV 1</p> <p>09/30/2024</p> <p>Issued: _____ Date: _____</p>	<p><b>CONSULTANTS:</b></p>	<p><b>ARCHITECT/ENGINEERS:</b></p> <p><b>VALHALLA ENGINEERING GROUP, LLC</b></p> <p>750 W HAMPODEN AVE SUITE 300 ENGLEWOOD, CO 80110 (720) 550-6307 WWW.VALHALLAENGINEERING.COM</p> <p>VEG 20.14</p>	<p><b>STAMP:</b></p>	<p>U.S. Department of Veterans Affairs</p>	<p>Drawing Title</p> <p><b>PLAN NORTH 1ST FLOOR - ELECTRICAL DEMOLITION PLAN</b></p> <p>Approved: Project Director</p>	<p>Phase</p> <p><b>100% CONSTRUCTION DOCUMENT</b></p>	<p>Project Title</p> <p><b>REPLACE STEAM SYSTEMS</b></p> <p>Location 2907 PLEASANT VALLEY BLVD ALTOONA, PA 16602</p> <p>Issue Date 09/30/2024</p> <p>Checked RA</p> <p>Drawn GH</p>	<p>Project Number 503-19-112</p> <p>Building Number 1</p> <p>Drawing Number <b>ED112</b></p>
---	----------------------------	--	----------------------	--	--	---	---	--

9/30/2024 4:10:38 PM  
B:\300\20\_14\_Albana\_PA\_Sham\20\_14\_Albana\_Sham\_VEG MEP\_R19.rvt



1 PLAN NORTH 4TH FLOOR - ELECTRICAL DEMOLITION PLAN  
1/8" = 1'-0"



**GENERAL NOTES**

- A. REFER TO SPECIFICATIONS FOR FURTHER REQUIREMENTS IN THE SCOPE.
- B. REFER TO 'GC' SERIES SHEETS FOR WORK PHASING REQUIREMENTS.
- C. CONTRACTOR SHALL FIELD VERIFY EXISTING CONDITIONS AND REPORT DISCREPANCIES TO THE VHA COR BEFORE PROCEEDING WITH WORK.
- D. REFER TO E-001 AND E-002 FOR ADDITIONAL GENERAL NOTES AND SYMBOLS.
- E. REFER TO HAZARDOUS MATERIAL SURVEY IN THE SPECIFICATIONS. DO NOT PROCEED WITH DEMOLITION OR DISTURBANCE OF ITEMS CONTAINING HAZARDOUS MATERIALS UNTIL ABATEMENT IN ACCORDANCE WITH HAZARDOUS MATERIAL ABATEMENT SPECIFICATIONS HAS BEEN PERFORMED.
- F. CONTRACTOR SHALL RELABEL OCPD'S NOT REUSED FOR NEW CIRCUITS AS SPARE AND PROVIDE NEW UPDATED TYPE-WRITTEN PANEL DIRECTORY.

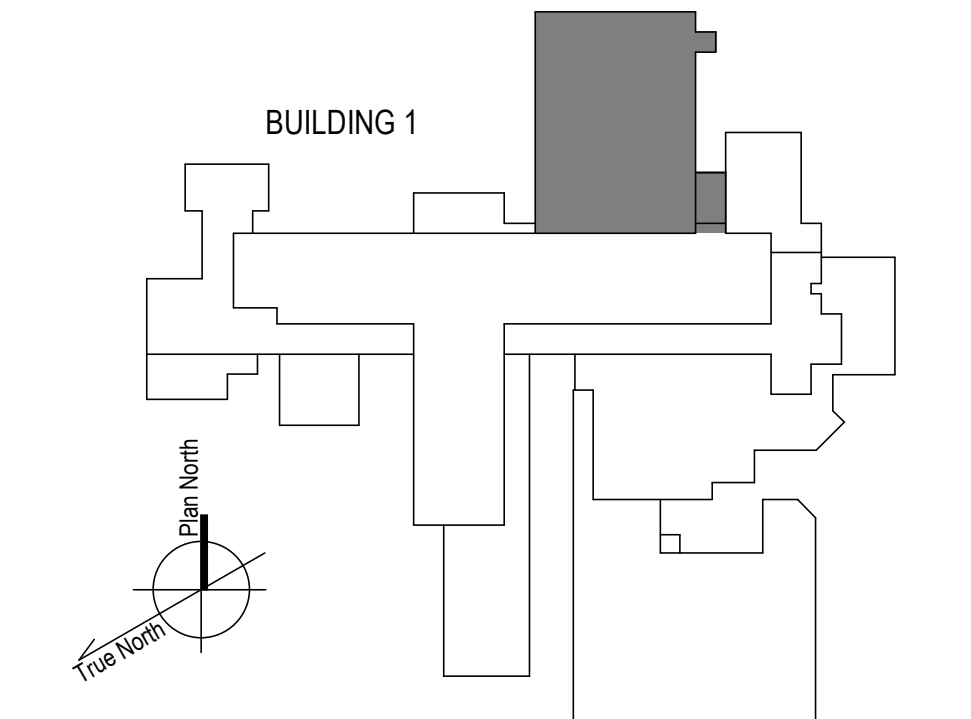
**KEYNOTES**

1. DISCONNECT AND REMOVE POWER FROM EXISTING ELECTRIC STEAM TRAP MONITOR BACK TO PANEL SP4F. PRESERVE CONDUIT AND PATHWAY FOR REUSE.

**FIRE-RESISTIVE RATED WALL TYPE LEGEND**

- - - 2-HOUR FIRE SEPARATION
- - - 1-HOUR FIRE SEPARATION
- - - 1-HOUR SMOKE BARRIER
- - - 0-HOUR SMOKE RESISTIVE

**KEY PLAN**



<p>100% CONSTRUCTION DOCUMENTS - REV 1</p> <p>09/30/2024</p> <p>Issued: _____ Date: _____</p>	<p><b>CONSULTANTS:</b></p>	<p><b>ARCHITECT/ENGINEERS:</b></p> <p><b>VALHALLA ENGINEERING GROUP, LLC</b></p> <p>750 W HAMPODEN AVE SUITE 300 ENGLEWOOD, CO 80110 (720) 550-8307 WWW.VALHALLAENGINEERING.COM</p> <p>VEG 20.14</p>	<p><b>STAMP:</b></p> <p>10/01/2024</p>	<p>U.S. Department of Veterans Affairs</p>	<p>Drawing Title</p> <p><b>PLAN NORTH 4TH FLOOR - ELECTRICAL DEMOLITION PLAN</b></p> <p>Approved: Project Director</p>	<p>Phase</p> <p><b>100% CONSTRUCTION DOCUMENT</b></p>	<p>Project Title</p> <p><b>REPLACE STEAM SYSTEMS</b></p> <p>Location 2907 PLEASANT VALLEY BLVD ALTOONA, PA 16602</p> <p>Issue Date 09/30/2024</p> <p>Checked RA</p> <p>Drawn GH</p>	<p>Project Number</p> <p>503-19-112</p> <p>Building Number</p> <p>1</p> <p>Drawing Number</p> <p><b>ED142</b></p>
---	----------------------------	--	--	--	--	---	---	---





A

B

C

D

E

F



1 BUILDING 3 - BOILER PLANT ELECTRICAL DEMOLITION PLAN  
 1/4" = 1'-0"  
 0 1 2 4 8 16'  
 North  
 True North

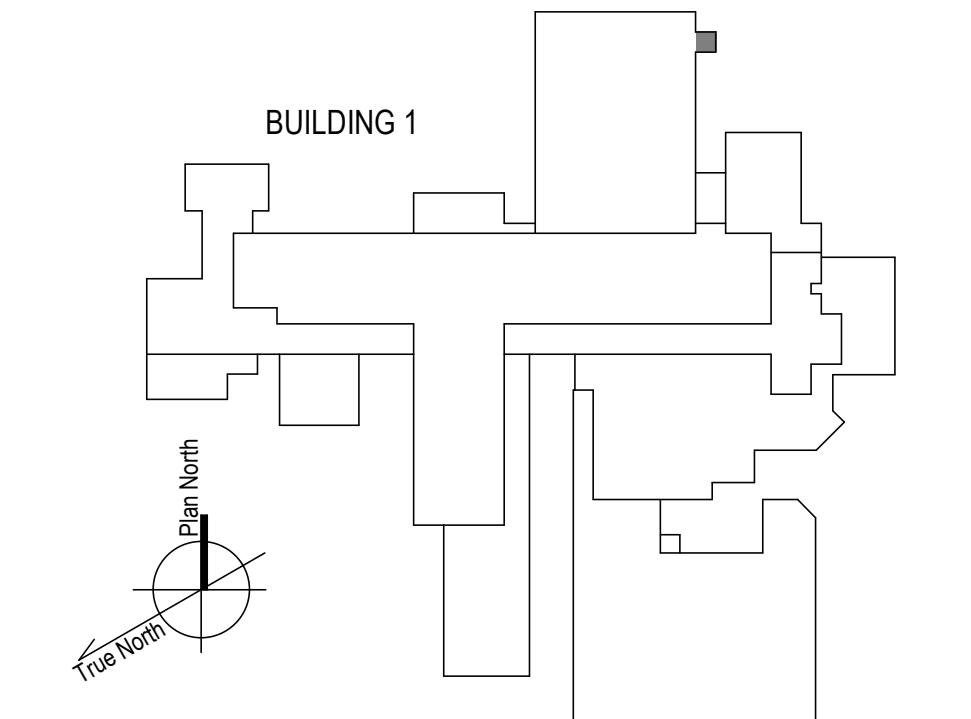
**GENERAL NOTES**

- A. REFER TO SPECIFICATIONS FOR FURTHER REQUIREMENTS IN THE SCOPE.
- B. REFER TO 'GC' SERIES SHEETS FOR WORK PHASING REQUIREMENTS.
- C. CONTRACTOR SHALL FIELD VERIFY EXISTING CONDITIONS AND REPORT DISCREPANCIES TO THE VHA COR BEFORE PROCEEDING WITH WORK.
- D. REFER TO E-001 AND E-002 FOR ADDITIONAL GENERAL NOTES AND SYMBOLS.
- E. REFER TO HAZARDOUS MATERIAL SURVEY IN THE SPECIFICATIONS. DO NOT PROCEED WITH DEMOLITION OR DISTURBANCE OF ITEMS CONTAINING HAZARDOUS MATERIALS UNTIL ABATEMENT IN ACCORDANCE WITH HAZARDOUS MATERIAL ABATEMENT SPECIFICATIONS HAS BEEN PERFORMED.
- F. CONTRACTOR SHALL RELABEL OCPD'S NOT REUSED FOR NEW CIRCUITS AS SPARE AND PROVIDE NEW UPDATED TYPE-WRITTEN PANEL DIRECTORY.

**KEYNOTES**

- 1. DISCONNECT AND REMOVE POWER FROM EXISTING ELECTRIC STEAM TRAP MONITOR BACK TO PANEL L-26. PRESERVE CONDUIT AND PATHWAY FOR REUSE.

**KEY PLAN**



9/30/2024 4:16:47 PM  
 BIM 360/220\_H\_Albama\_PA\_Schem20\_H\_Albama\_Steam\_VEG MEP\_R19.rvt  
 Issued: Date:

100% CONSTRUCTION DOCUMENTS - REV 1		09/30/2024		CONSULTANTS:		ARCHITECT/ENGINEERS:		STAMP:		Drawing Title		Phase		Project Title		Project Number	
						VALHALLA ENGINEERING GROUP, LLC 750 W HAMPTDEN AVE SUITE 300 ENGLEWOOD, CO 80110 (720) 555-6307 WWW.VALHALLAENGINEERING.COM		U.S. Department of Veterans Affairs		BUILDING 3 - BOILER PLANT ELECTRICAL DEMOLITION PLAN		100% CONSTRUCTION DOCUMENT		REPLACE STEAM SYSTEMS		503-19-112	
								MITCH BIBLE ENGINEER PE092820 10/01/2024		Approved: Project Director				Location 2907 PLEASANT VALLEY BLVD ALTOONA, PA 16602		Building Number 3	
														Issue Date 09/30/2024		Drawing Number ED301	
														Checked RA		Drawn GH	









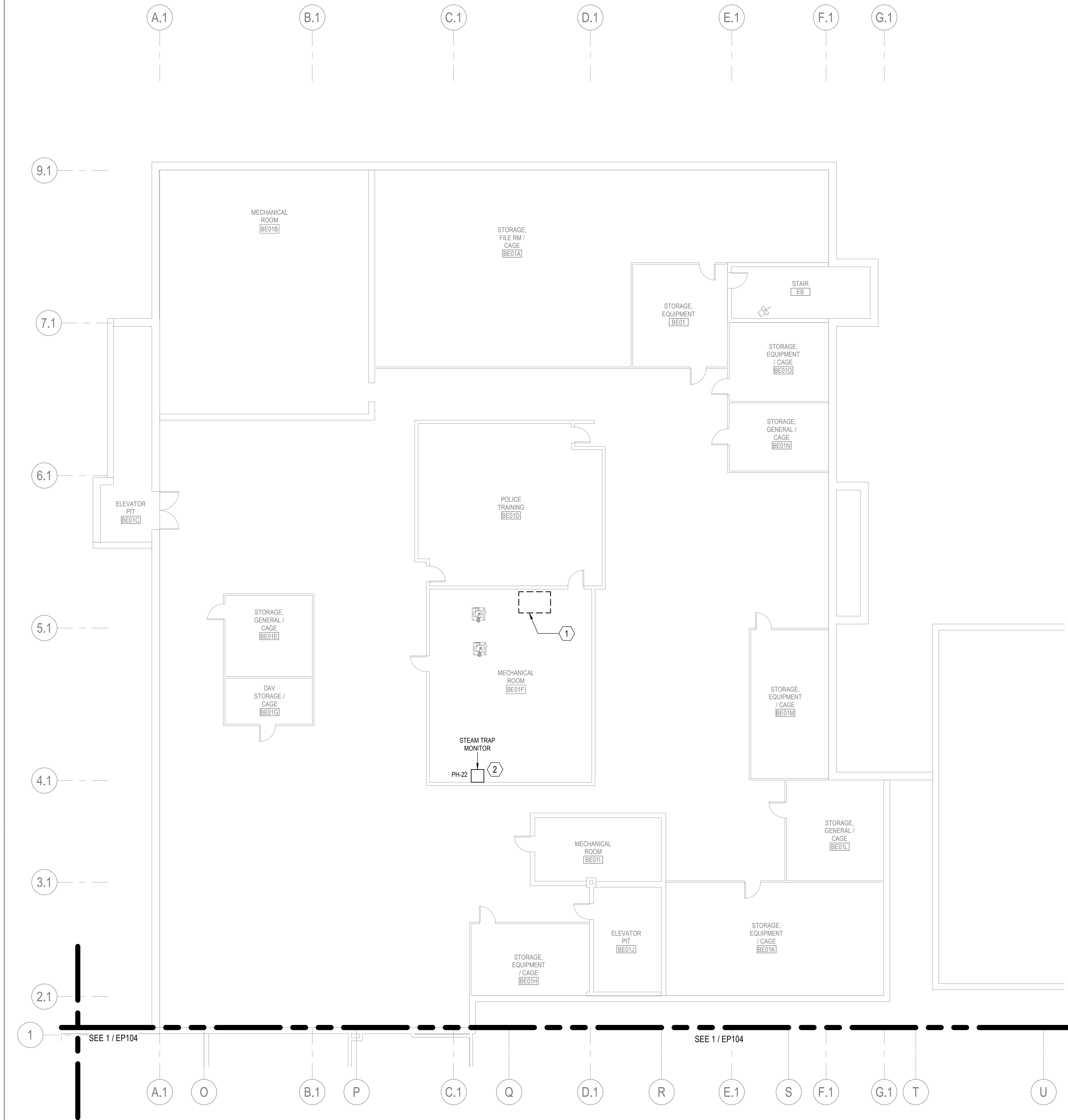
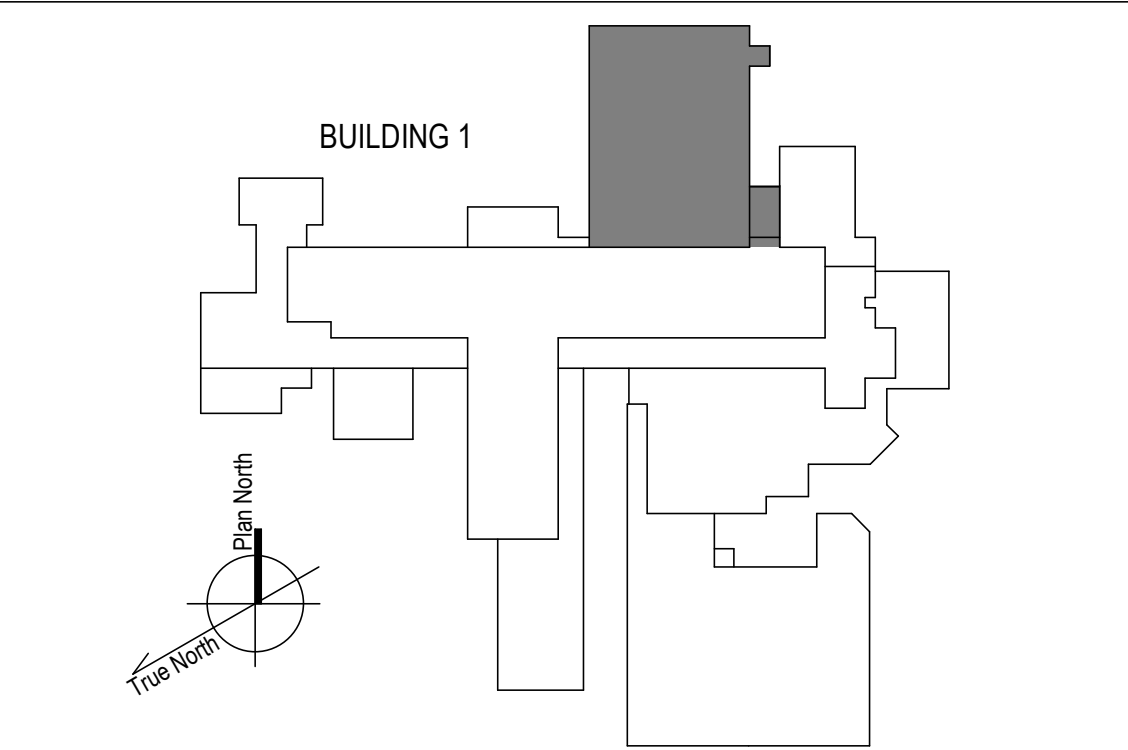
GENERAL NOTES

- A. REFER TO SPECIFICATIONS FOR FURTHER REQUIREMENTS IN THE SCOPE.
- B. REFER TO 'GC' SERIES SHEETS FOR WORK PHASING REQUIREMENTS.
- C. CONTRACTOR SHALL FIELD VERIFY EXISTING CONDITIONS AND REPORT DISCREPANCIES TO THE VHA COR BEFORE PROCEEDING WITH WORK.
- D. REFER TO E-001 AND E-002 FOR ADDITIONAL GENERAL NOTES AND SYMBOLS.
- E. REFER TO HAZARDOUS MATERIAL SURVEY IN THE SPECIFICATIONS. DO NOT PROCEED WITH DEMOLITION OR DISTURBANCE OF ITEMS CONTAINING HAZARDOUS MATERIALS UNTIL ABATEMENT IN ACCORDANCE WITH HAZARDOUS MATERIAL ABATEMENT SPECIFICATIONS HAS BEEN PERFORMED.
- F. CONTRACTOR SHALL RELABEL OCPD'S NOT REUSED FOR NEW CIRCUITS AS SPARE AND PROVIDE NEW UPDATED TYPE-WRITTEN PANEL DIRECTORY.

KEYNOTES

- DISCONNECT AND REMOVE POWER FROM EXISTING ELECTRIC CONDENSATE PUMP BACK TO SERVING PANEL. NEW STEAM-POWERED PUMP PROVIDED BY MECHANICAL CONTRACTOR. ASSUME DISTANCE OF 50 FEET FOR BIDDING PURPOSES.
- PROVIDE NEW CIRCUIT IN EXISTING CONDUIT TO NEW STEAM TRAP MONITOR. REUSE CIRCUIT IN PANEL PH, FED FROM ROOM 1F62, PROVIDE NEW BREAKER AND CONDUCTOR.

KEY PLAN



1 BASEMENT FLOOR - NORTH NEW WORK PLAN ELECTRICAL  
 1/8" = 1'-0"

100% CONSTRUCTION DOCUMENTS - REV 1	09/30/2024
Issued:	Date:

CONSULTANTS:

ARCHITECT/ENGINEERS:

**VALHALLA ENGINEERING GROUP, LLC**

750 W HAMPODEN AVE  
 SUITE 300  
 ENGLEWOOD, CO 80110  
 (720) 550-8307  
 WWW.VALHALLAENGINEERING.COM

VEG 20.14

STAMP:

MITCH BIBLE  
 ENGINEER  
 10/01/2024



Drawing Title  
**PLAN NORTH BASEMENT ELECTRICAL NEW WORK PLAN**

Approved: Project Director

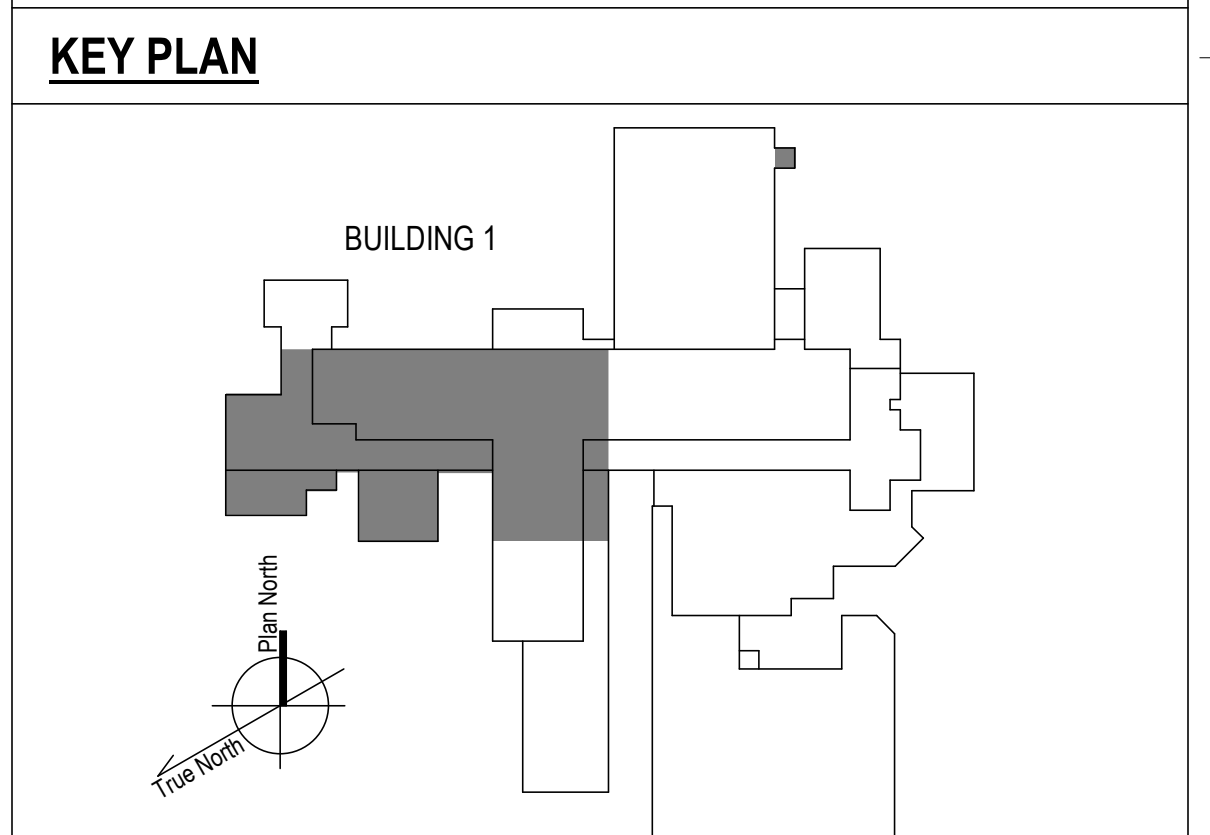
Phase  
**100% CONSTRUCTION DOCUMENT**

Project Title REPLACE STEAM SYSTEMS	Project Number 503-19-112
Location 2907 PLEASANT VALLEY BLVD ALTOONA, PA 16602	Building Number 1
Issue Date 09/30/2024	Checked TL
Drawn AB	Drawing Number EP102



- GENERAL NOTES**
- A. REFER TO SPECIFICATIONS FOR FURTHER REQUIREMENTS IN THE SCOPE.
  - B. REFER TO 'GC' SERIES SHEETS FOR WORK PHASING REQUIREMENTS.
  - C. CONTRACTOR SHALL FIELD VERIFY EXISTING CONDITIONS AND REPORT DISCREPANCIES TO THE VHA COR BEFORE PROCEEDING WITH WORK.
  - D. REFER TO E-001 AND E-002 FOR ADDITIONAL GENERAL NOTES AND SYMBOLS.
  - E. REFER TO HAZARDOUS MATERIAL SURVEY IN THE SPECIFICATIONS. DO NOT PROCEED WITH DEMOLITION OR DISTURBANCE OF ITEMS CONTAINING HAZARDOUS MATERIALS UNTIL ABATEMENT IN ACCORDANCE WITH HAZARDOUS MATERIAL ABATEMENT SPECIFICATIONS HAS BEEN PERFORMED.
  - F. CONTRACTOR SHALL RELABEL OCPD'S NOT REUSED FOR NEW CIRCUITS AS SPARE AND PROVIDE NEW UPDATED TYPE-WRITTEN PANEL DIRECTORY.

- KEYNOTES**
1. DISCONNECT AND REMOVE POWER FROM EXISTING ELECTRIC CONDENSATE PUMP BACK TO SERVING PANEL. NEW STEAM-POWERED PUMP PROVIDED BY MECHANICAL CONTRACTOR. ASSUME DISTANCE OF 100 FEET FOR BIDDING PURPOSES.
  2. PROVIDE NEW CIRCUIT IN EXISTING CONDUIT TO NEW STEAM TRAP MONITOR FROM PANEL LEBA-9. PROVIDE NEW BREAKER AND CONDUCTOR.
  3. PROVIDE NEW CIRCUIT IN EXISTING CONDUIT TO NEW STEAM TRAP MONITOR FROM PANEL SPBD1-25. PROVIDE NEW BREAKER AND CONDUCTOR.
  4. ONGOING PROJECT TO ADD CONDENSATE PUMP. PROVIDE ALLOWANCE TO RELOCATE EXISTING PUMP WITH EMERGENCY POWER. SEE MECHANICAL SHEET SERIES FOR LOCATION.



1 BASEMENT FLOOR - WEST POWER PLAN  
1/8" = 1'-0"

100% CONSTRUCTION DOCUMENTS - REV 1	09/30/2024	CONSULTANTS:	ARCHITECT/ENGINEERS: <b>VALHALLA ENGINEERING GROUP, LLC</b> 750 W HAMPODEN AVE SUITE 300 ENGLEWOOD, CO 80110 (720) 550-8307 WWW.VALLHALLAENGINEERING.COM	STAMP: 		Drawing Title <b>PLAN WEST BASEMENT ELECTRICAL PLAN</b>	Phase <b>100% CONSTRUCTION DOCUMENT</b>	Project Title <b>REPLACE STEAM SYSTEMS</b>	Project Number <b>503-19-112</b>
	Issued:					Date:	Approved: Project Director		Location 2907 PLEASANT VALLEY BLVD ALTOONA, PA 16602

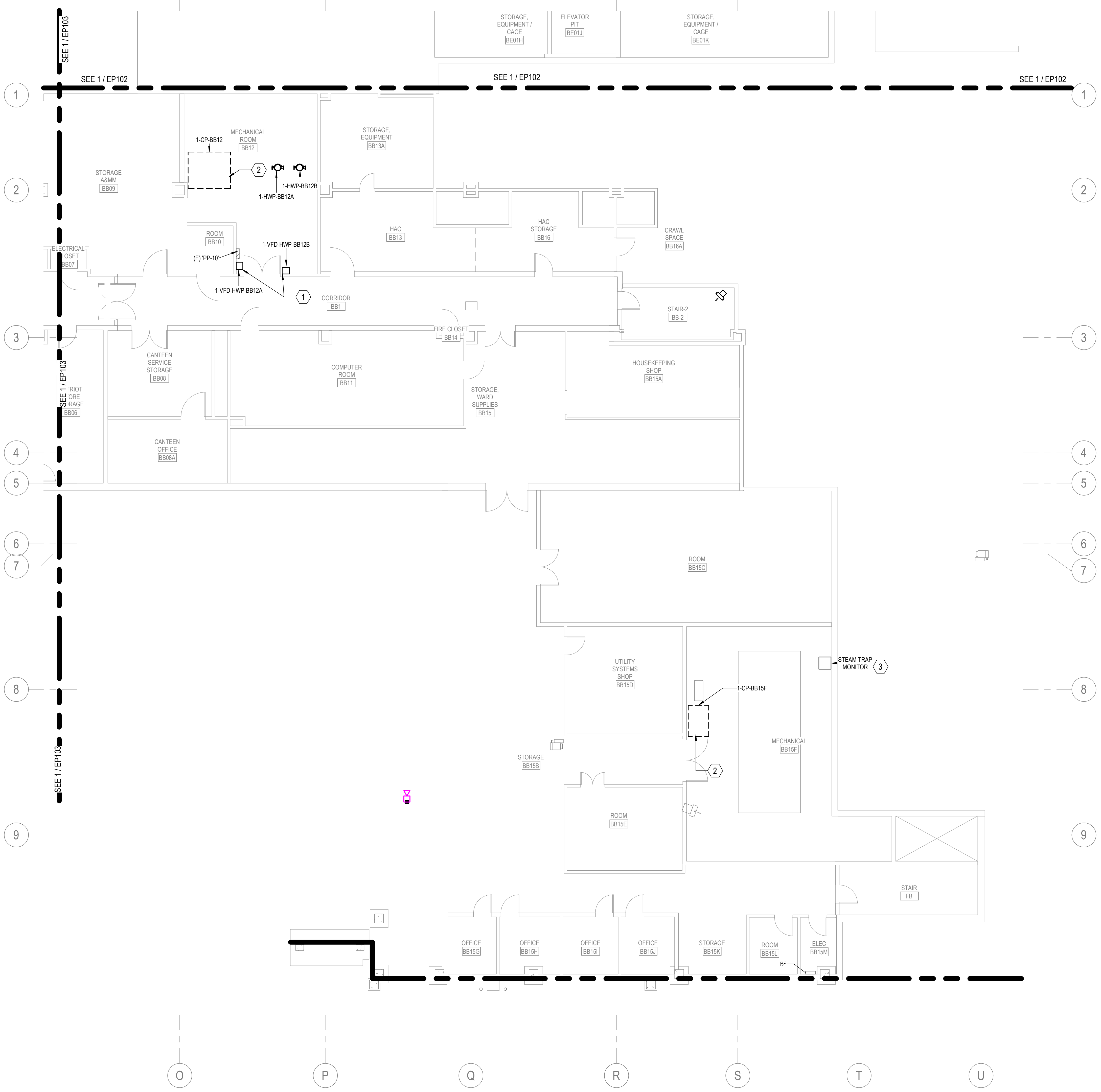
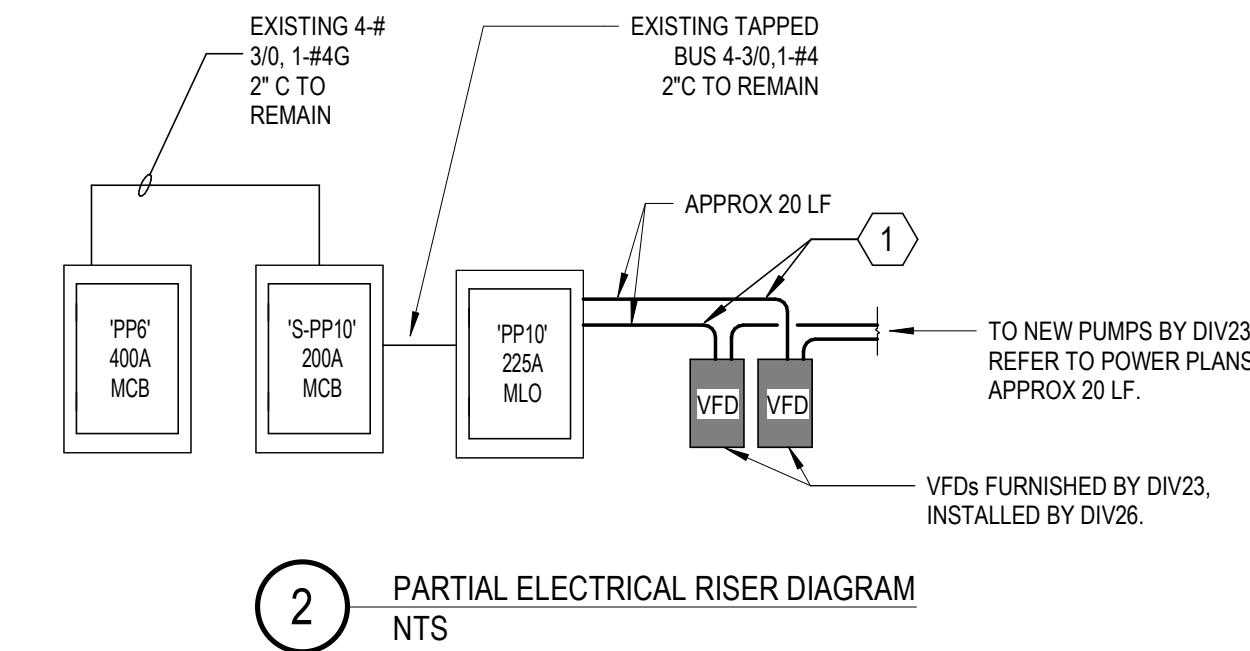


**GENERAL NOTES**

- A. REFER TO SPECIFICATIONS FOR FURTHER REQUIREMENTS IN THE SCOPE.
- B. REFER TO 'GC' SERIES SHEETS FOR WORK PHASING REQUIREMENTS.
- C. CONTRACTOR SHALL FIELD VERIFY EXISTING CONDITIONS AND REPORT DISCREPANCIES TO THE VHA COR BEFORE PROCEEDING WITH WORK.
- D. REFER TO E-001 AND E-002 FOR ADDITIONAL GENERAL NOTES AND SYMBOLS.
- E. REFER TO HAZARDOUS MATERIAL SURVEY IN THE SPECIFICATIONS. DO NOT PROCEED WITH DEMOLITION OR DISTURBANCE OF ITEMS CONTAINING HAZARDOUS MATERIALS UNTIL ABATEMENT IN ACCORDANCE WITH HAZARDOUS MATERIAL ABATEMENT SPECIFICATIONS HAS BEEN PERFORMED.
- F. CONTRACTOR SHALL RELABEL OCPD'S NOT REUSED FOR NEW CIRCUITS AS SPARE AND PROVIDE NEW UPDATED TYPE-WRITTEN PANEL DIRECTORY.

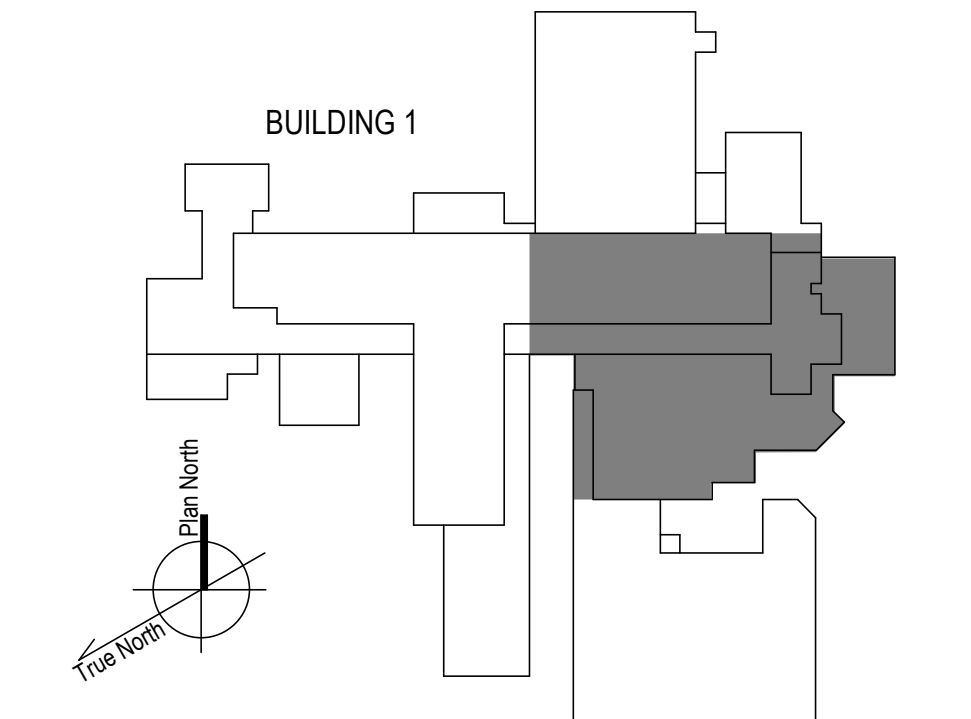
**KEYNOTES**

- 1. INSTALL NEW VFDs FURNISHED BY DIV23. FOR EACH, PROVIDE NEW 50A/3P CB IN PLACE OF EXISTING 30A/3P CB IN EXISTING 'PP-10'. PROVIDE 3-#6, 1-#10G IN 1" C TO VFD AND ON TO RESPECTIVE NEW PUMPS.
- 2. DISCONNECT AND REMOVE POWER FROM EXISTING ELECTRIC CONDENSATE PUMP BACK TO SERVING PANEL. NEW STEAM-POWERED PUMP PROVIDED BY MECHANICAL CONTRACTOR. ASSUME DISTANCE OF 20 FEET FOR BIDDING PURPOSES.
- 3. PROVIDE NEW CIRCUIT IN EXISTING CONDUIT TO NEW STEAM TRAP MONITOR FROM PANEL BP-25. PROVIDE NEW BREAKER AND CONDUCTOR.



1 BASEMENT FLOOR - EAST POWER PLAN  
1/8" = 1'-0"

**KEY PLAN**



100% CONSTRUCTION DOCUMENTS - REV 1

09/30/2024

CONSULTANTS:

ARCHITECT/ENGINEERS:

**VALHALLA ENGINEERING GROUP, LLC**  
750 W HAMPDEN AVE SUITE 300 ENGLEWOOD, CO 80110 (720) 550-8307 WWW.VALHALLAENGINEERING.COM

STAMP:

Professional Engineer Stamp for MITCH BIBLE, License No. PE092820, dated 10/01/2024.



Drawing Title  
**BASEMENT ELECTRICAL POWER PLAN**

Approved: Project Director

Phase  
**100% CONSTRUCTION DOCUMENT**

Project Title  
**REPLACE STEAM SYSTEMS**

Location  
2907 PLEASANT VALLEY BLVD ALTOONA, PA 16602

Issue Date: 09/30/2024  
Checked: TL  
Drawn: MB

Project Number  
**503-19-112**

Building Number  
**1**

Drawing Number  
**EP104**





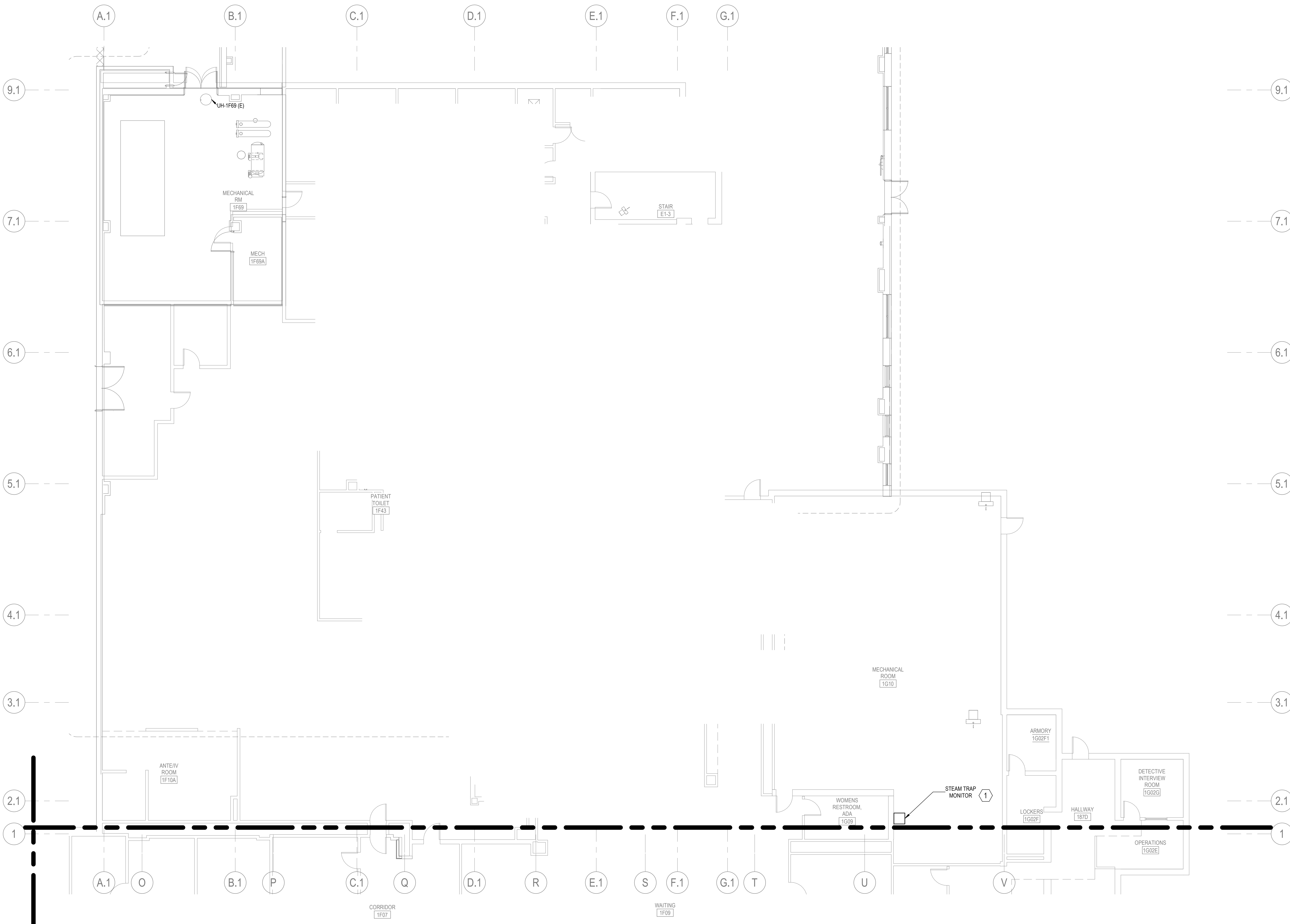
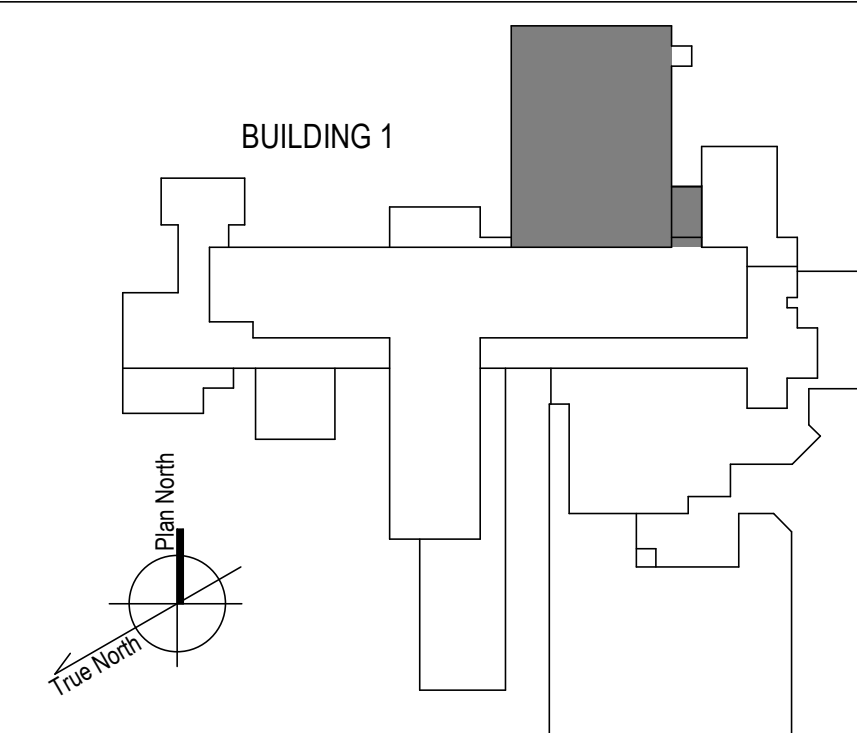
**GENERAL NOTES**

- A. REFER TO SPECIFICATIONS FOR FURTHER REQUIREMENTS IN THE SCOPE.
- B. REFER TO 'GC' SERIES SHEETS FOR WORK PHASING REQUIREMENTS.
- C. CONTRACTOR SHALL FIELD VERIFY EXISTING CONDITIONS AND REPORT DISCREPANCIES TO THE VHA COR BEFORE PROCEEDING WITH WORK.
- D. REFER TO E-001 AND E-002 FOR ADDITIONAL GENERAL NOTES AND SYMBOLS.
- E. REFER TO HAZARDOUS MATERIAL SURVEY IN THE SPECIFICATIONS. DO NOT PROCEED WITH DEMOLITION OR DISTURBANCE OF ITEMS CONTAINING HAZARDOUS MATERIALS UNTIL ABATEMENT IN ACCORDANCE WITH HAZARDOUS MATERIAL ABATEMENT SPECIFICATIONS HAS BEEN PERFORMED.
- F. CONTRACTOR SHALL RELABEL OCPD'S NOT REUSED FOR NEW CIRCUITS AS SPARE AND PROVIDE NEW UPDATED TYPE-WRITTEN PANEL DIRECTORY.

**KEYNOTES**

1. PROVIDE NEW CIRCUIT IN EXISTING CONDUIT TO NEW STEAM TRAP MONITOR FROM PANEL C6P1E-24 IN ROOM 1G03. PROVIDE NEW BREAKER AND CONDUCTOR.

**KEY PLAN**



1 PLAN NORTH 1ST FLOOR - ELECTRICAL PLAN  
NTS

100% CONSTRUCTION DOCUMENTS - REV 1	09/30/2024
Issued:	Date:

**CONSULTANTS:**

**ARCHITECT/ENGINEERS:**

**VALHALLA ENGINEERING GROUP, LLC**

750 W HAMPODEN AVE  
SUITE 300  
ENGLEWOOD, CO 80110  
(720) 550-8307  
WWW.VALHALLAENGINEERING.COM

**STAMP:**

MITCH BIBLE  
ENGINEER  
10/01/2024

VEG 20.14



**Drawing Title**

PLAN NORTH 1ST FLOOR - ELECTRICAL POWER PLAN

Approved: Project Director

**Phase**

100% CONSTRUCTION DOCUMENT

<b>Project Title</b>	REPLACE STEAM SYSTEMS	<b>Project Number</b>	503-19-112
<b>Location</b>	2907 PLEASANT VALLEY BLVD ALTOONA, PA 16602	<b>Building Number</b>	1
<b>Issue Date</b>	09/30/2024	<b>Checked</b>	RA
		<b>Drawn</b>	GH
		<b>Drawing Number</b>	EP112

**GENERAL NOTES**

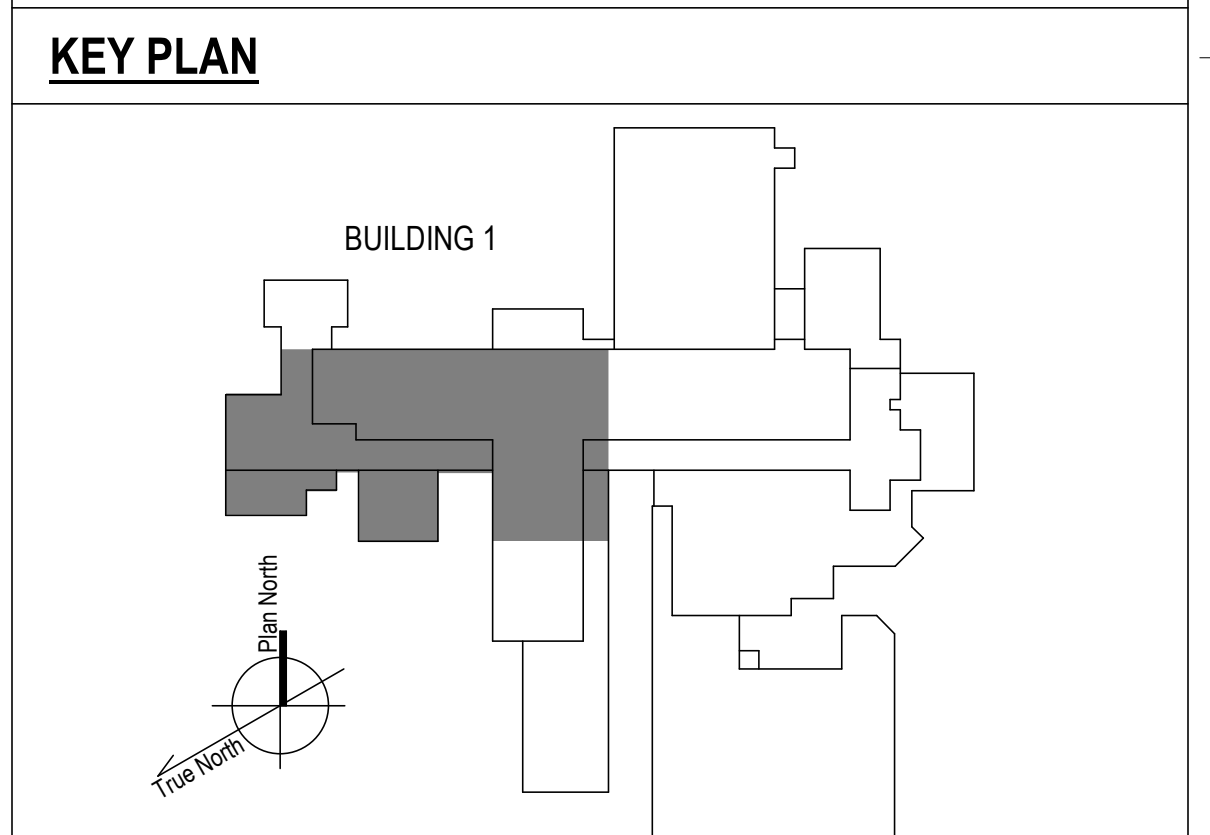
- REFER TO SPECIFICATIONS FOR FURTHER REQUIREMENTS IN THE SCOPE.
- REFER TO 'GC' SERIES SHEETS FOR WORK PHASING REQUIREMENTS.
- CONTRACTOR SHALL FIELD VERIFY EXISTING CONDITIONS AND REPORT DISCREPANCIES TO THE VHA COR BEFORE PROCEEDING WITH WORK.
- REFER TO E-001 AND E-002 FOR ADDITIONAL GENERAL NOTES AND SYMBOLS.
- REFER TO HAZARDOUS MATERIAL SURVEY IN THE SPECIFICATIONS. DO NOT PROCEED WITH DEMOLITION OR DISTURBANCE OF ITEMS CONTAINING HAZARDOUS MATERIALS UNTIL ABATEMENT IN ACCORDANCE WITH HAZARDOUS MATERIAL ABATEMENT SPECIFICATIONS HAS BEEN PERFORMED.
- CONTRACTOR SHALL RELABEL OCPD'S NOT REUSED FOR NEW CIRCUITS AS SPARE AND PROVIDE NEW UPDATED TYPE-WRITTEN PANEL DIRECTORY.

**KEYNOTES**

- PROVIDE 20A CIRCUIT FROM PANEL SP1A. PROVIDE SNAPSWITCH DISCONNECT FOR UNIT HEATER UNLESS UNIT HAS INTEGRAL DISCONNECT.
- PROVIDE 20A CIRCUIT FROM PANEL LP1F. PROVIDE SNAPSWITCH DISCONNECT FOR UNIT HEATER UNLESS UNIT HAS INTEGRAL DISCONNECT.



1 PLAN WEST 1ST FLOOR - ELECTRICAL POWER PLAN  
1/8" = 1'-0"



100% CONSTRUCTION DOCUMENTS - REV 1 09/30/2024 Issued: _____ Date: _____	<b>CONSULTANTS:</b>  	<b>ARCHITECT/ENGINEERS:</b>  750 W HAMPODEN AVE SUITE 300 ENGLEWOOD, CO 80110 (720) 550-8307 WWW.VALHALLAENGINEERING.COM	<b>STAMP:</b>  10/01/2024	 U.S. Department of Veterans Affairs	Drawing Title <b>PLAN WEST 1ST FLOOR - ELECTRICAL PLAN</b> Approved: Project Director	Phase <b>100% CONSTRUCTION DOCUMENT</b>	Project Title <b>REPLACE STEAM SYSTEMS</b>	Project Number <b>503-19-112</b>
	Location 2907 PLEASANT VALLEY BLVD ALTOONA, PA 16602	Issue Date <b>09/30/2024</b>	Checked <b>RA</b>	Drawn <b>GH</b>	Building Number <b>1</b>	Drawing Number <b>EP113</b>		



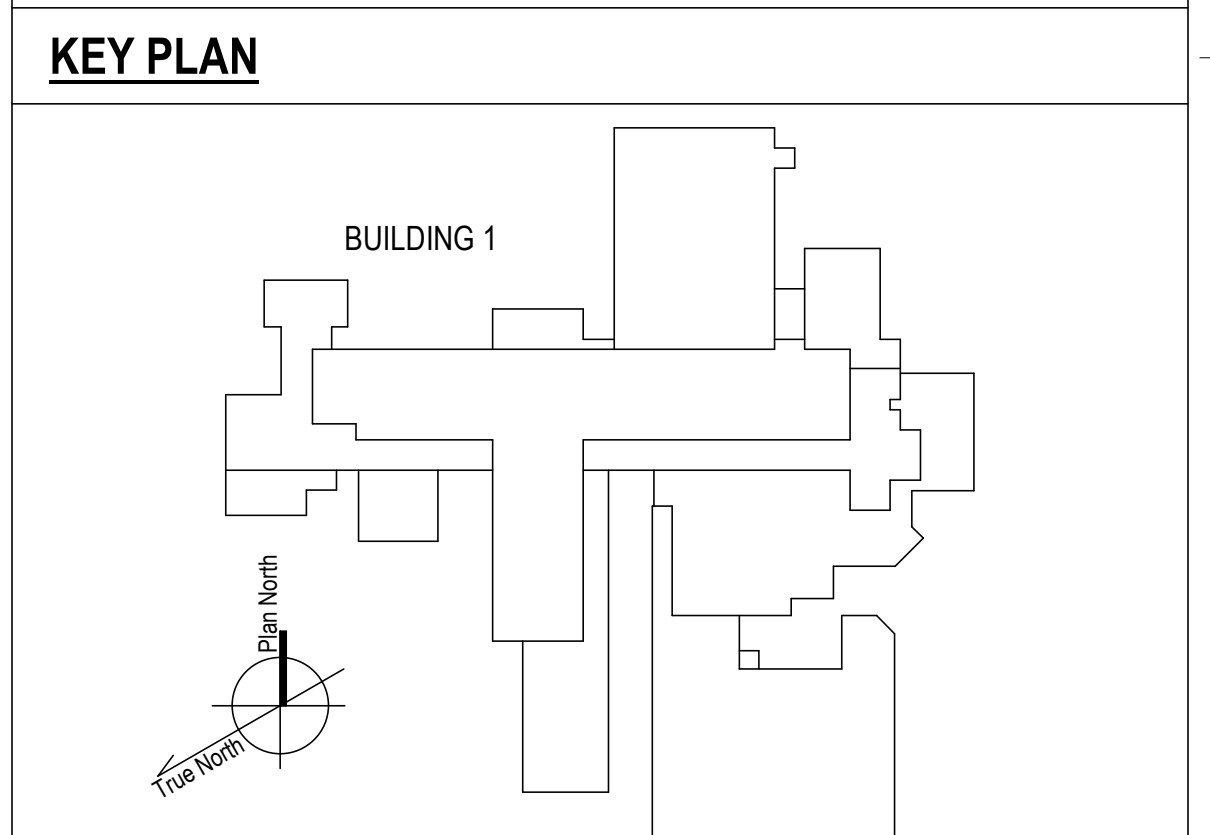
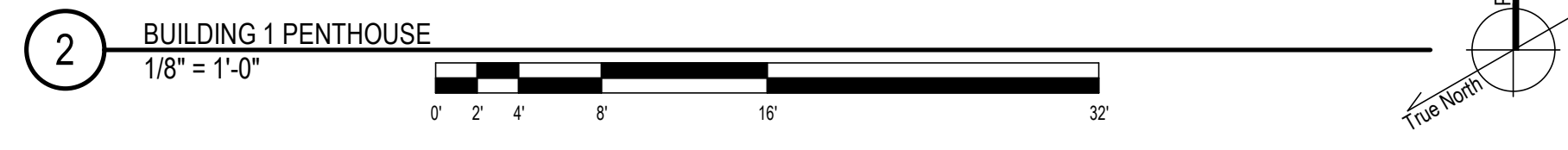
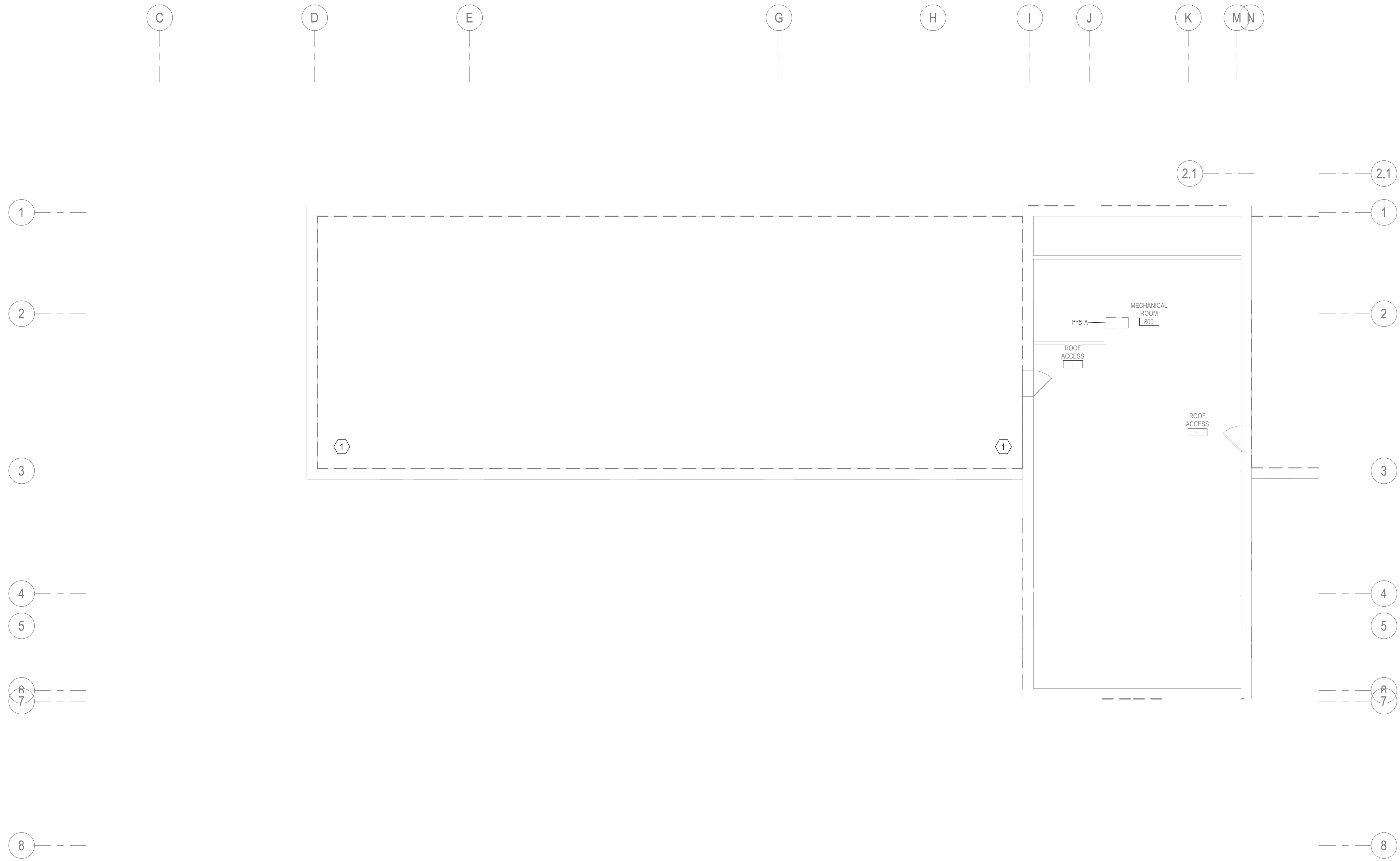


**GENERAL NOTES**

- A. REFER TO SPECIFICATIONS FOR FURTHER REQUIREMENTS IN THE SCOPE.
- B. REFER TO 'GC' SERIES SHEETS FOR WORK PHASING REQUIREMENTS.
- C. CONTRACTOR SHALL FIELD VERIFY EXISTING CONDITIONS AND REPORT DISCREPANCIES TO THE VHA COR BEFORE PROCEEDING WITH WORK.
- D. REFER TO E-001 AND E-002 FOR ADDITIONAL GENERAL NOTES AND SYMBOLS.
- E. REFER TO HAZARDOUS MATERIAL SURVEY IN THE SPECIFICATIONS. DO NOT PROCEED WITH DEMOLITION OR DISTURBANCE OF ITEMS CONTAINING HAZARDOUS MATERIALS UNTIL ABATEMENT IN ACCORDANCE WITH HAZARDOUS MATERIAL ABATEMENT SPECIFICATIONS HAS BEEN PERFORMED.
- F. CONTRACTOR SHALL RELABEL OCPD'S NOT REUSED FOR NEW CIRCUITS AS SPARE AND PROVIDE NEW UPDATED TYPE-WRITTEN PANEL DIRECTORY.

**KEYNOTES**

- 1. PROVIDE STEAM TRAP REPEATER ON WALL DIRECTED TOWARD BUILDING
- 3. CONTRACTOR TO PERFORM SIGNAL STRENGTH SURVEY TO DETERMINE REPEATER PLACEMENT.



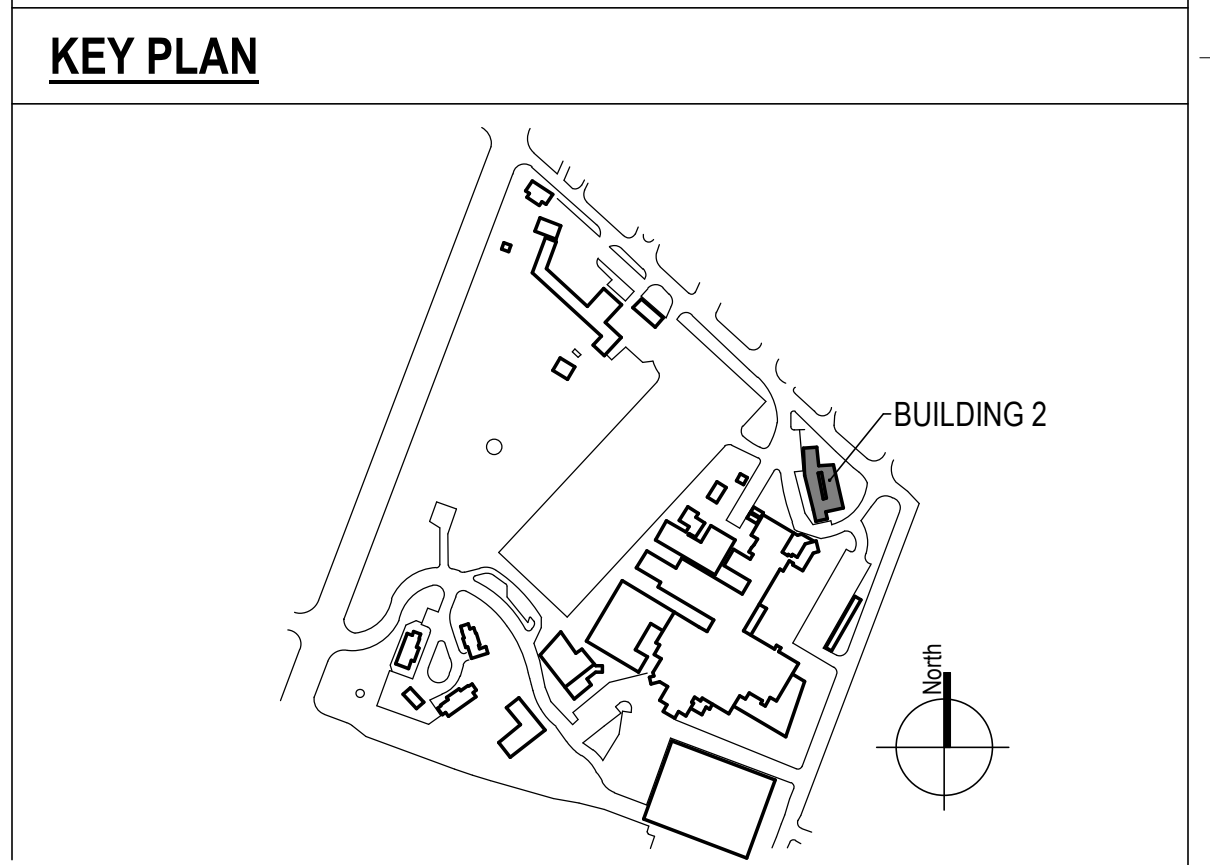
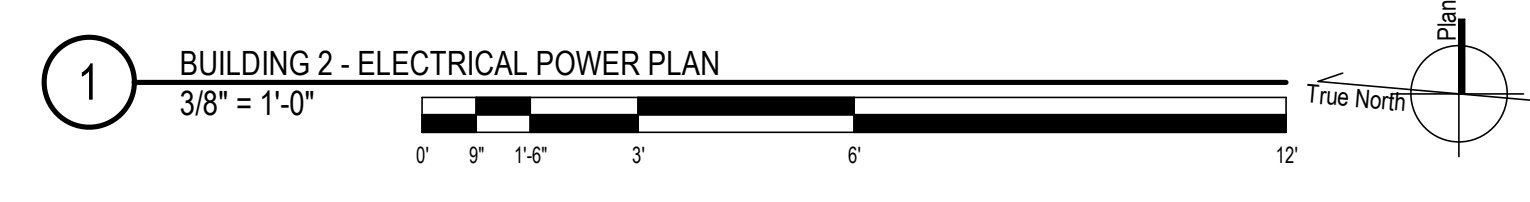
100% CONSTRUCTION DOCUMENTS - REV 1	09/30/2024	CONSULTANTS:	ARCHITECT/ENGINEERS: <b>VALHALLA ENGINEERING GROUP, LLC</b> 750 W HAMPODEN AVE SUITE 300 ENGLEWOOD, CO 80110 (720) 550-8307 WWW.VALHALLAENGINEERING.COM	STAMP: 		Drawing Title	Phase	Project Title	Project Number
							<b>BUILDING 1 PENTHOUSE</b>	<b>100% CONSTRUCTION DOCUMENT</b>	<b>REPLACE STEAM SYSTEMS</b>
Issued:	Date:					Approved: Project Director		Location	Building Number
								2907 PLEASANT VALLEY BLVD ALTOONA, PA 16602	<b>1</b>
								Issue Date	Drawing Number
								09/30/2024	<b>EP181</b>
								Checked	Drawn
								RA	GH

9/30/2024 4:17:26 PM B:\360\20\_14\_Albana\_PA\_Sham20\_14\_Albana\_Sham\_VEG\MEP\_R18.rvt



- GENERAL NOTES**
- A. REFER TO SPECIFICATIONS FOR FURTHER REQUIREMENTS IN THE SCOPE.
  - B. REFER TO 'GC' SERIES SHEETS FOR WORK PHASING REQUIREMENTS.
  - C. CONTRACTOR SHALL FIELD VERIFY EXISTING CONDITIONS AND REPORT DISCREPANCIES TO THE VHA COR BEFORE PROCEEDING WITH WORK.
  - D. REFER TO E-001 AND E-002 FOR ADDITIONAL GENERAL NOTES AND SYMBOLS.
  - E. REFER TO HAZARDOUS MATERIAL SURVEY IN THE SPECIFICATIONS. DO NOT PROCEED WITH DEMOLITION OR DISTURBANCE OF ITEMS CONTAINING HAZARDOUS MATERIALS UNTIL ABATEMENT IN ACCORDANCE WITH HAZARDOUS MATERIAL ABATEMENT SPECIFICATIONS HAS BEEN PERFORMED.
  - F. CONTRACTOR SHALL RELABEL OCPD'S NOT REUSED FOR NEW CIRCUITS AS SPARE AND PROVIDE NEW UPDATED TYPE-WRITTEN PANEL DIRECTORY.

- KEYNOTES**
- 1. PROVIDE NEW CIRCUIT IN EXISTING CONDUIT TO NEW STEAM TRAP MONITOR FROM PANEL LE0BA-17. PROVIDE NEW BREAKER AND CONDUCTOR.



100% CONSTRUCTION DOCUMENTS - REV 1	09/30/2024	CONSULTANTS:	ARCHITECT/ENGINEERS: <b>VALHALLA ENGINEERING GROUP, LLC</b> 750 W HAMPODEN AVE SUITE 300 ENGLEWOOD, CO 80110 (720) 550-8307 WWW.VALHALLAENGINEERING.COM	STAMP: 		Drawing Title	Phase	Project Title	Project Number		
	Issued:					Date:	BUILDING 2 - ELECTRICAL POWER PLAN	100% CONSTRUCTION DOCUMENT	REPLACE STEAM SYSTEMS	503-19-112	
VA FORM 08 - 6231						Approved: Project Director		Location	Building Number		
								2907 PLEASANT VALLEY BLVD ALTOONA, PA 16602	2		
								Issue Date	Checked	Drawn	Drawing Number <b>EP201</b>
								09/30/2024	RA	GH	



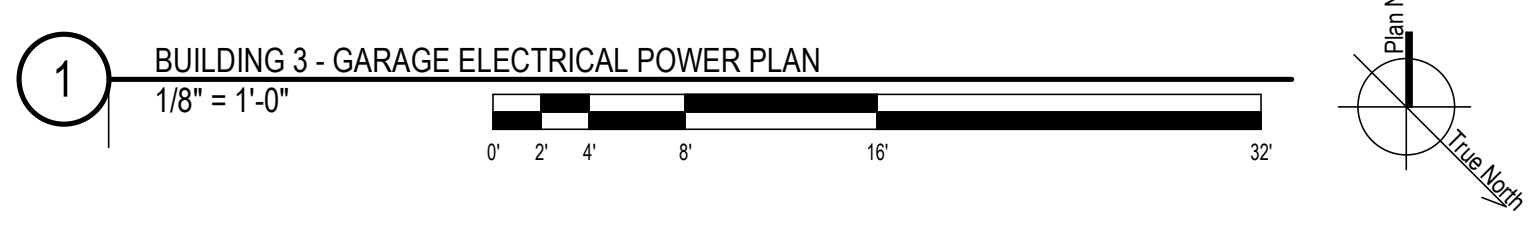
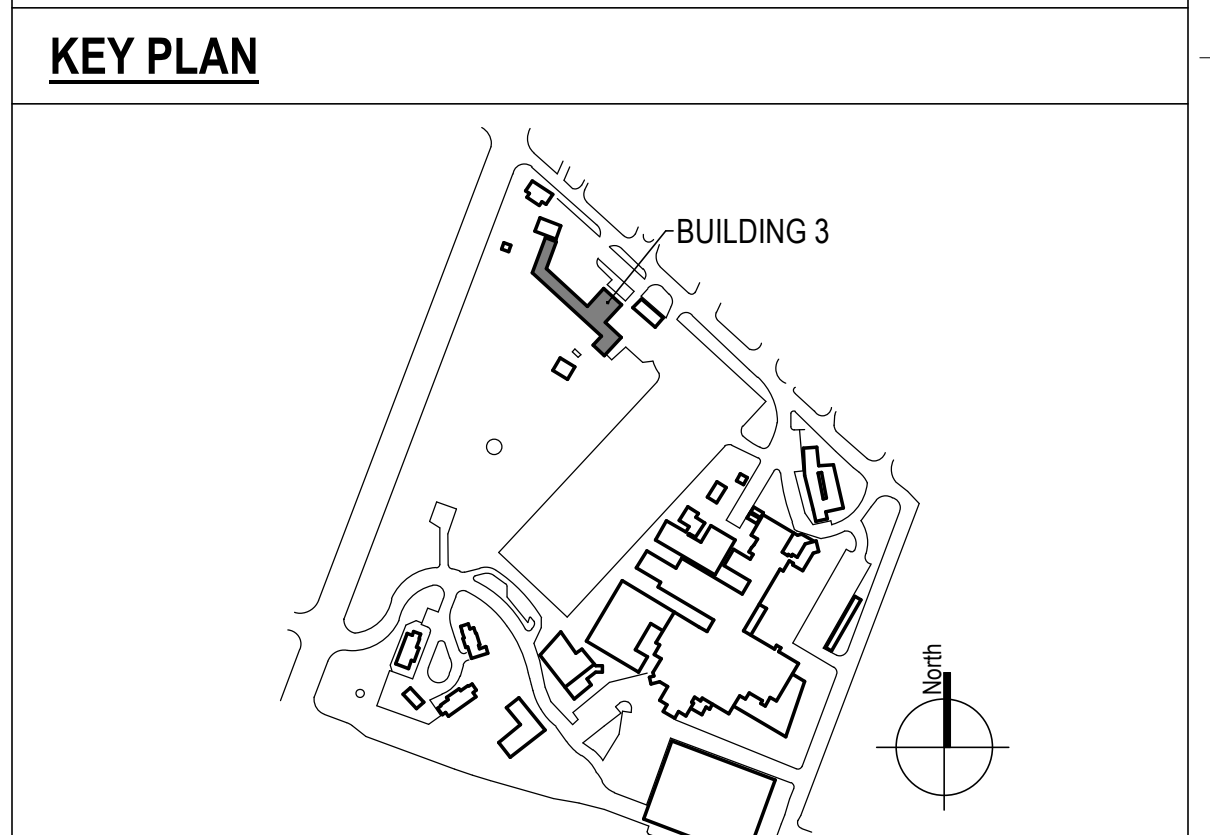


**GENERAL NOTES**

- A. REFER TO SPECIFICATIONS FOR FURTHER REQUIREMENTS IN THE SCOPE.
- B. REFER TO 'GC' SERIES SHEETS FOR WORK PHASING REQUIREMENTS.
- C. CONTRACTOR SHALL FIELD VERIFY EXISTING CONDITIONS AND REPORT DISCREPANCIES TO THE VHA COR BEFORE PROCEEDING WITH WORK.
- D. REFER TO E-001 AND E-002 FOR ADDITIONAL GENERAL NOTES AND SYMBOLS.
- E. REFER TO HAZARDOUS MATERIAL SURVEY IN THE SPECIFICATIONS. DO NOT PROCEED WITH DEMOLITION OR DISTURBANCE OF ITEMS CONTAINING HAZARDOUS MATERIALS UNTIL ABATEMENT IN ACCORDANCE WITH HAZARDOUS MATERIAL ABATEMENT SPECIFICATIONS HAS BEEN PERFORMED.
- F. CONTRACTOR SHALL RELABEL OCPD'S NOT REUSED FOR NEW CIRCUITS AS SPARE AND PROVIDE NEW UPDATED TYPE-WRITTEN PANEL DIRECTORY.

**KEYNOTES**

1. PROVIDE NEW CIRCUIT IN EXISTING CONDUIT TO NEW STEAM TRAP MONITOR FROM PANEL LBH2-30. PROVIDE NEW BREAKER AND CONDUCTOR.



100% CONSTRUCTION DOCUMENTS - REV 1	09/30/2024	CONSULTANTS:	<b>ARCHITECT/ENGINEERS:</b>  750 W HAMPODEN AVE SUITE 300 ENGLEWOOD, CO 80110 (720) 555-6307 WWW.VALHALLAENGINEERING.COM	<b>STAMP:</b> 	 U.S. Department of Veterans Affairs	Drawing Title	Phase	Project Title	Project Number		
							BUILDING 3 - GARAGE ELECTRICAL POWER PLAN	100% CONSTRUCTION DOCUMENT	REPLACE STEAM SYSTEMS	503-19-112	
Issued:	Date:					Approved: Project Director		Location	Building Number		
								2907 PLEASANT VALLEY BLVD ALTOONA, PA 16602	3		
								Issue Date	Checked	Drawn	Drawing Number
								09/30/2024	RA	GH	EP302

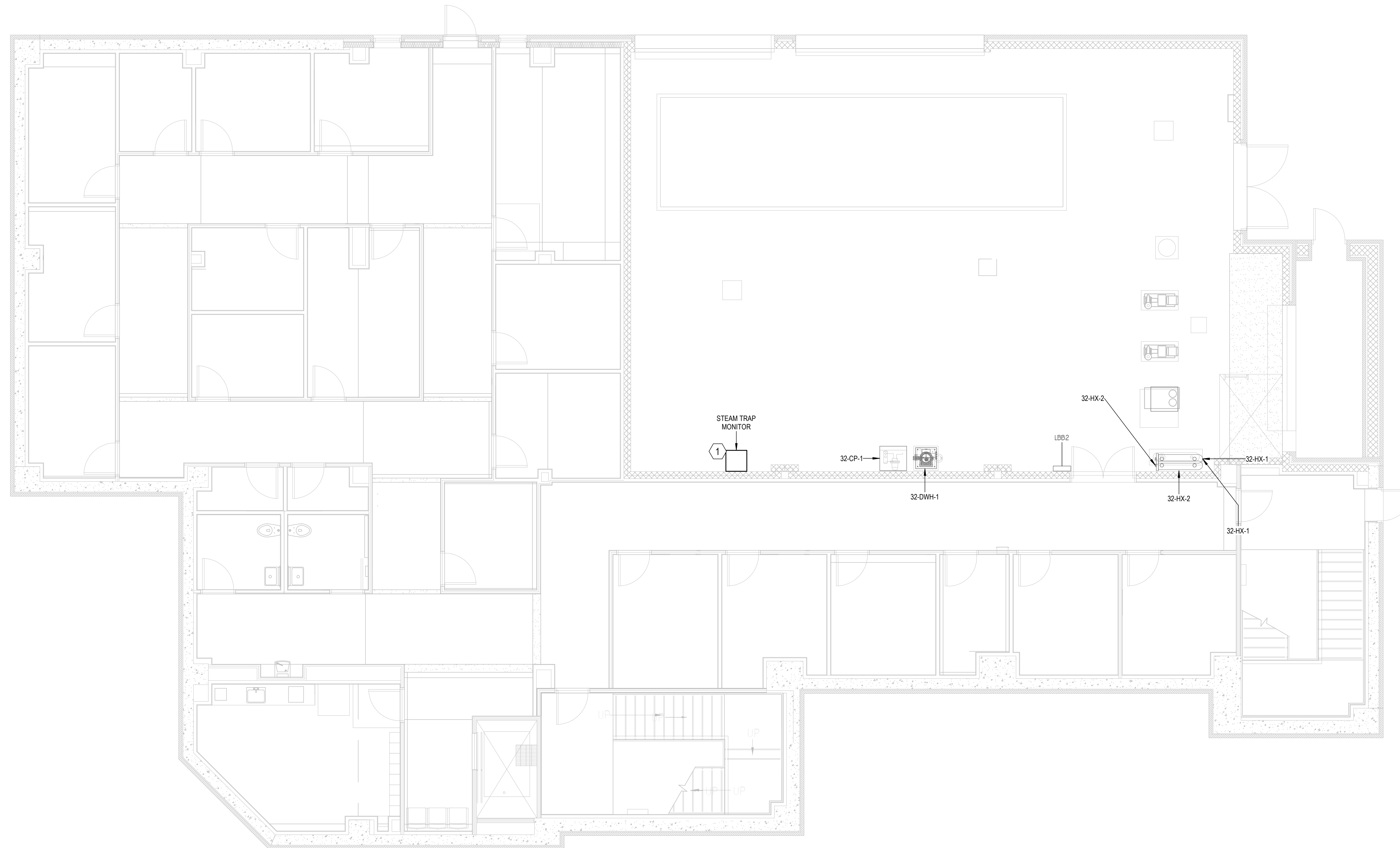
9/30/2024 4:17:41 PM  
 B:\300\20\_14\_Altونا\_PA\_Schem\20\_14\_Altونا\_PA\_Schem\VEG MEP\_R13.rvt

**GENERAL NOTES**

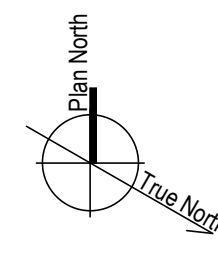
- A. REFER TO SPECIFICATIONS FOR FURTHER REQUIREMENTS IN THE SCOPE.
- B. REFER TO 'GC' SERIES SHEETS FOR WORK PHASING REQUIREMENTS.
- C. CONTRACTOR SHALL FIELD VERIFY EXISTING CONDITIONS AND REPORT DISCREPANCIES TO THE VHA COR BEFORE PROCEEDING WITH WORK.
- D. REFER TO E-001 AND E-002 FOR ADDITIONAL GENERAL NOTES AND SYMBOLS.
- E. REFER TO HAZARDOUS MATERIAL SURVEY IN THE SPECIFICATIONS. DO NOT PROCEED WITH DEMOLITION OR DISTURBANCE OF ITEMS CONTAINING HAZARDOUS MATERIALS UNTIL ABATEMENT IN ACCORDANCE WITH HAZARDOUS MATERIAL ABATEMENT SPECIFICATIONS HAS BEEN PERFORMED.
- F. CONTRACTOR SHALL RELABEL OCPD'S NOT REUSED FOR NEW CIRCUITS AS SPARE AND PROVIDE NEW UPDATED TYPE-WRITTEN PANEL DIRECTORY.

**KEYNOTES**

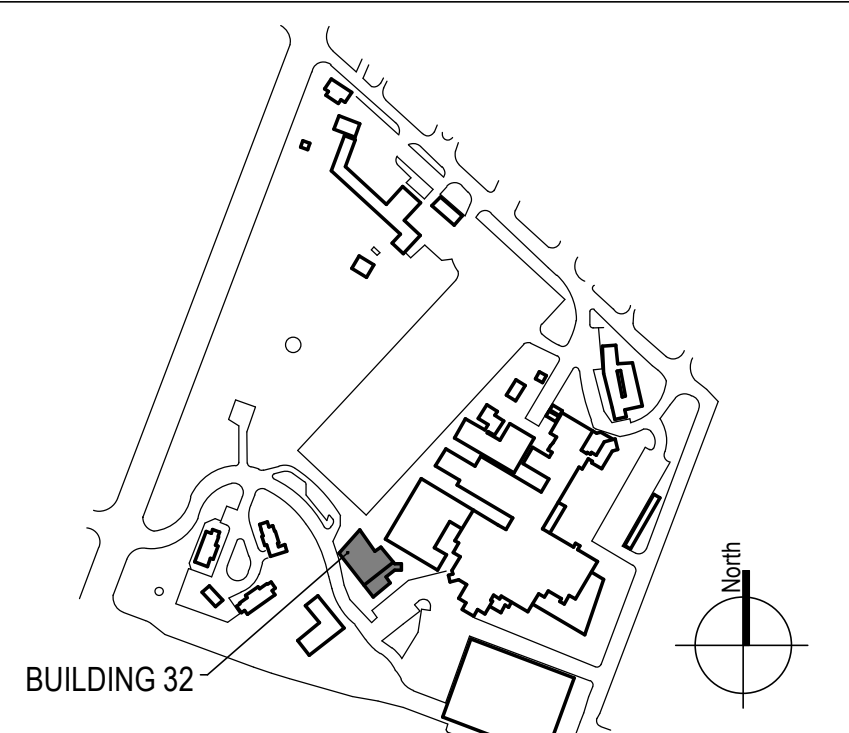
- 1. PROVIDE NEW CIRCUIT IN NEW CONDUIT TO NEW STEAM TRAP MONITOR. PROVIDE NEW BREAKER AND CONDUCTOR FROM NEARBY PANEL LBB2.



1 BUILDING 32 - ELECTRICAL POWER PLAN  
 3/16" = 1'-0"



**KEY PLAN**



100% CONSTRUCTION DOCUMENTS - REV 1	09/30/2024	CONSULTANTS:	ARCHITECT/ENGINEERS: VALHALLA ENGINEERING GROUP, LLC 750 W HAMPODEN AVE SUITE 300 ENGLEWOOD, CO 80110 (720) 555-8307 WWW.VALHALLAENGINEERING.COM	STAMP: 		Drawing Title BUILDING 32 - ELECTRICAL POWER PLAN	Phase 100% CONSTRUCTION DOCUMENT	Project Title REPLACE STEAM SYSTEMS	Project Number 503-19-112	
	Issued:					Date:	Approved: Project Director		Location 2907 PLEASANT VALLEY BLVD ALTOONA, PA 16602	Building Number 32
VA FORM 08 - 6231	1	2	3	4	5	6	7	8	9	10



A

B

C

D

E

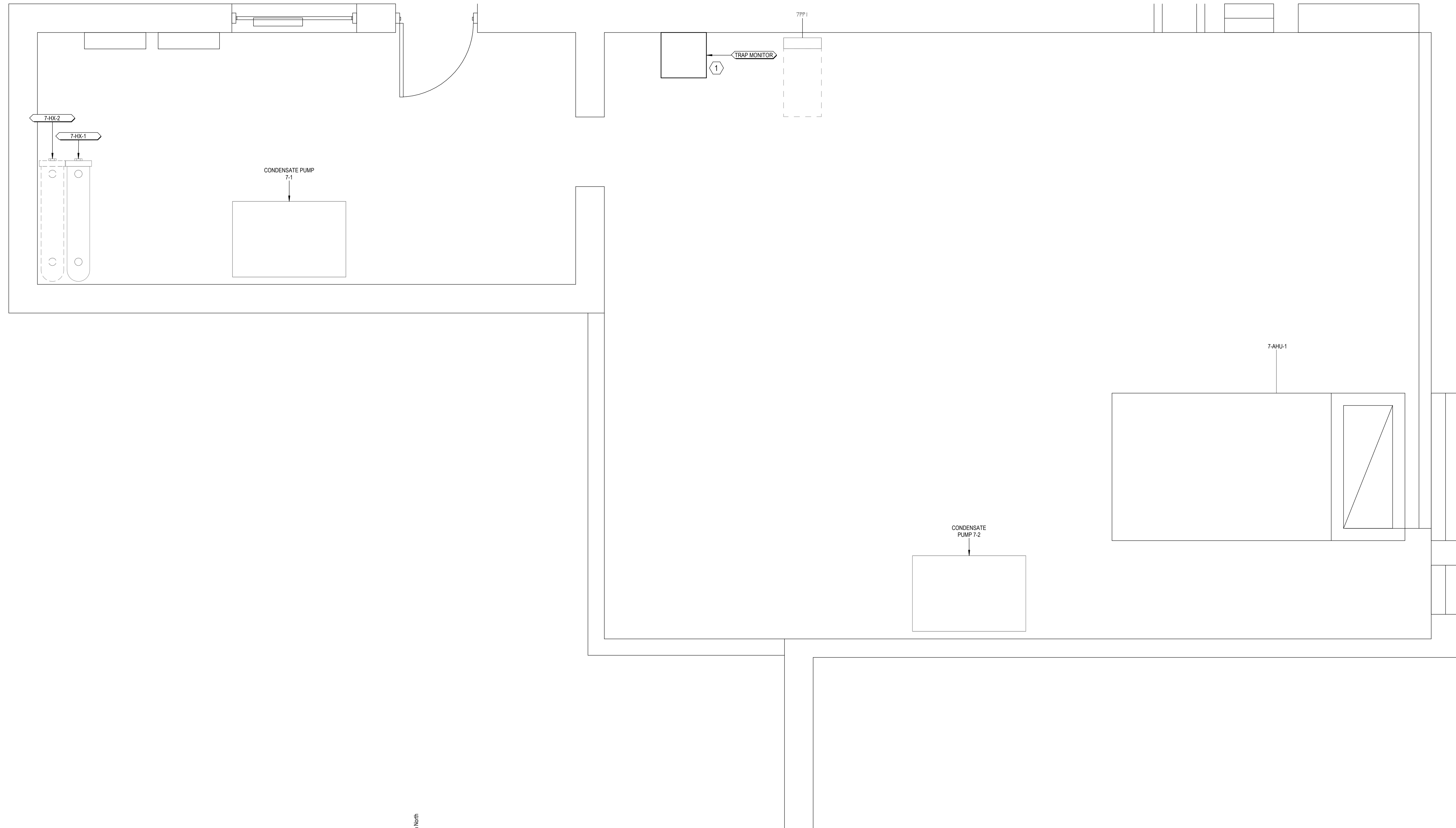
F

**GENERAL NOTES**

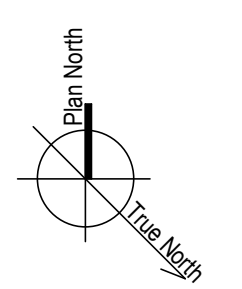
- A. REFER TO SPECIFICATIONS FOR FURTHER REQUIREMENTS IN THE SCOPE.
- B. REFER TO 'GC' SERIES SHEETS FOR WORK PHASING REQUIREMENTS.
- C. CONTRACTOR SHALL FIELD VERIFY EXISTING CONDITIONS AND REPORT DISCREPANCIES TO THE VHA COR BEFORE PROCEEDING WITH WORK.
- D. REFER TO E-001 AND E-002 FOR ADDITIONAL GENERAL NOTES AND SYMBOLS.
- E. REFER TO HAZARDOUS MATERIAL SURVEY IN THE SPECIFICATIONS. DO NOT PROCEED WITH DEMOLITION OR DISTURBANCE OF ITEMS CONTAINING HAZARDOUS MATERIALS UNTIL ABATEMENT IN ACCORDANCE WITH HAZARDOUS MATERIAL ABATEMENT SPECIFICATIONS HAS BEEN PERFORMED.
- F. CONTRACTOR SHALL RELABEL OCPD'S NOT REUSED FOR NEW CIRCUITS AS SPARE AND PROVIDE NEW UPDATED TYPE-WRITTEN PANEL DIRECTORY.

**KEYNOTES**

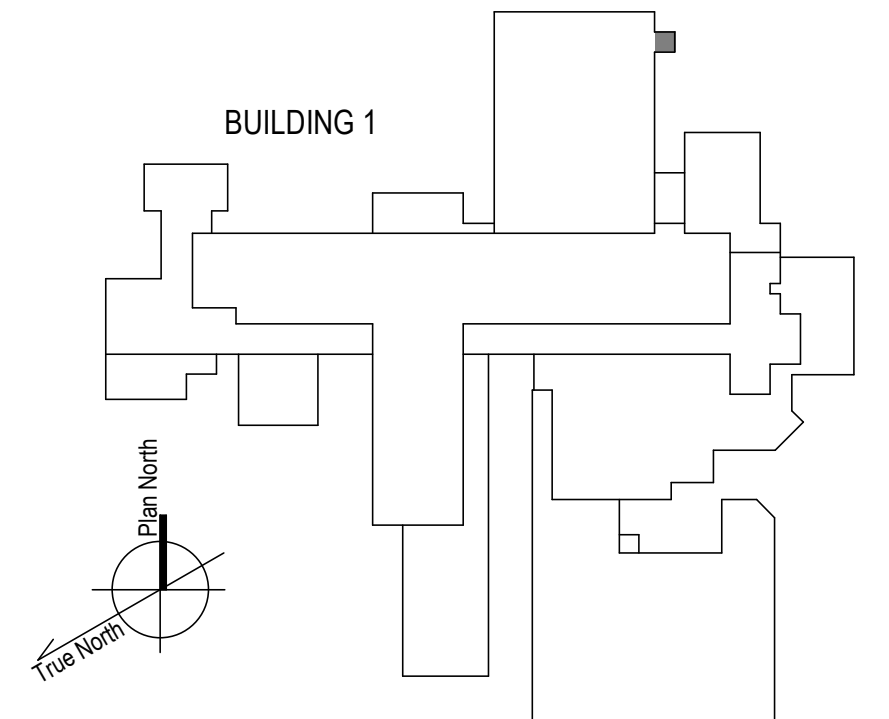
- 1. PROVIDE NEW CIRCUIT IN EXISTING CONDUIT TO NEW STEAM TRAP MONITOR FROM PANEL 7PP1-3. PROVIDE NEW BREAKER AND CONDUCTOR.



1 BUILDING 7 - ELECTRICAL POWER PLAN  
 1/2" = 1'-0"



**KEY PLAN**



100% CONSTRUCTION DOCUMENTS - REV 1	09/30/2024	CONSULTANTS:	<b>ARCHITECT/ENGINEERS:</b>  VALHALLA ENGINEERING GROUP, LLC 750 W HAMPODEN AVE SUITE 300 ENGLEWOOD, CO 80110 (720) 550-6307 WWW.VALHALLAENGINEERING.COM	<b>STAMP:</b> 	 U.S. Department of Veterans Affairs	Drawing Title	Phase	Project Title	Project Number
	Issued:					Date:	BUILDING 7 - ELECTRICAL POWER PLAN	100% CONSTRUCTION DOCUMENT	REPLACE STEAM SYSTEMS
					Approved: Project Director		Location		Building Number
							2907 PLEASANT VALLEY BLVD ALTOONA, PA 16602		7
							Issue Date	Checked	Drawn
							09/30/2024	RA	GH
									Drawing Number
									EP701

9/30/2024 4:17:50 PM  
E:\300\2024\_14\_Albana\_PA\_Steam\_VEG\MEP\_R19.rvt