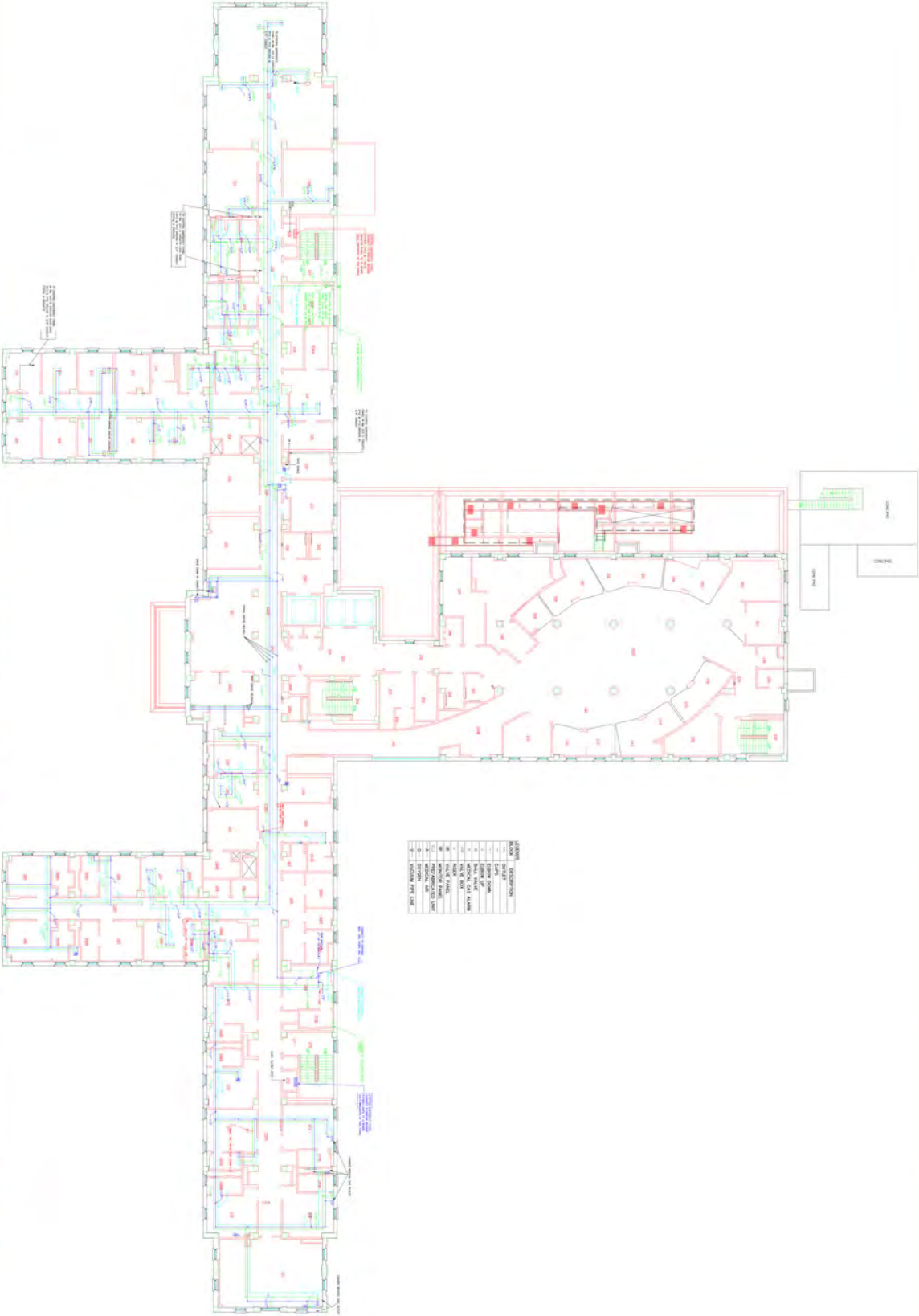


NO.	DESCRIPTION
1	1" = 1/8" PLAN
2	1" = 1/8" SECTION
3	1" = 1/8" ELEVATION
4	1" = 1/8" EXTERIOR
5	1" = 1/8" INTERIOR
6	1" = 1/8" FINISH
7	1" = 1/8" MECHANICAL
8	1" = 1/8" ELECTRICAL
9	1" = 1/8" PLUMBING
10	1" = 1/8" PAVEMENT
11	1" = 1/8" ROOFING
12	1" = 1/8" SITES
13	1" = 1/8" UTILITIES
14	1" = 1/8" VENTILATION
15	1" = 1/8" WATER
16	1" = 1/8" WASTE
17	1" = 1/8" GAS
18	1" = 1/8" HEATING
19	1" = 1/8" COOLING
20	1" = 1/8" INSULATION
21	1" = 1/8" LIGHTING
22	1" = 1/8" SOUND
23	1" = 1/8" SECURITY
24	1" = 1/8" ACCESSIBILITY
25	1" = 1/8" SIGNAGE
26	1" = 1/8" FURNITURE
27	1" = 1/8" EQUIPMENT
28	1" = 1/8" STORAGE
29	1" = 1/8" OFFICE
30	1" = 1/8" LABORATORY
31	1" = 1/8" OPERATING ROOM
32	1" = 1/8" RADIOLOGY
33	1" = 1/8" PHARMACY
34	1" = 1/8" RECEPTION
35	1" = 1/8" WAITING
36	1" = 1/8" CONFERENCE
37	1" = 1/8" STORAGE
38	1" = 1/8" OFFICE
39	1" = 1/8" LABORATORY
40	1" = 1/8" OPERATING ROOM
41	1" = 1/8" RADIOLOGY
42	1" = 1/8" PHARMACY
43	1" = 1/8" RECEPTION
44	1" = 1/8" WAITING
45	1" = 1/8" CONFERENCE
46	1" = 1/8" STORAGE
47	1" = 1/8" OFFICE
48	1" = 1/8" LABORATORY
49	1" = 1/8" OPERATING ROOM
50	1" = 1/8" RADIOLOGY
51	1" = 1/8" PHARMACY
52	1" = 1/8" RECEPTION
53	1" = 1/8" WAITING
54	1" = 1/8" CONFERENCE
55	1" = 1/8" STORAGE
56	1" = 1/8" OFFICE
57	1" = 1/8" LABORATORY
58	1" = 1/8" OPERATING ROOM
59	1" = 1/8" RADIOLOGY
60	1" = 1/8" PHARMACY
61	1" = 1/8" RECEPTION
62	1" = 1/8" WAITING
63	1" = 1/8" CONFERENCE
64	1" = 1/8" STORAGE
65	1" = 1/8" OFFICE
66	1" = 1/8" LABORATORY
67	1" = 1/8" OPERATING ROOM
68	1" = 1/8" RADIOLOGY
69	1" = 1/8" PHARMACY
70	1" = 1/8" RECEPTION
71	1" = 1/8" WAITING
72	1" = 1/8" CONFERENCE
73	1" = 1/8" STORAGE
74	1" = 1/8" OFFICE
75	1" = 1/8" LABORATORY
76	1" = 1/8" OPERATING ROOM
77	1" = 1/8" RADIOLOGY
78	1" = 1/8" PHARMACY
79	1" = 1/8" RECEPTION
80	1" = 1/8" WAITING
81	1" = 1/8" CONFERENCE
82	1" = 1/8" STORAGE
83	1" = 1/8" OFFICE
84	1" = 1/8" LABORATORY
85	1" = 1/8" OPERATING ROOM
86	1" = 1/8" RADIOLOGY
87	1" = 1/8" PHARMACY
88	1" = 1/8" RECEPTION
89	1" = 1/8" WAITING
90	1" = 1/8" CONFERENCE
91	1" = 1/8" STORAGE
92	1" = 1/8" OFFICE
93	1" = 1/8" LABORATORY
94	1" = 1/8" OPERATING ROOM
95	1" = 1/8" RADIOLOGY
96	1" = 1/8" PHARMACY
97	1" = 1/8" RECEPTION
98	1" = 1/8" WAITING
99	1" = 1/8" CONFERENCE
100	1" = 1/8" STORAGE

Architect/Engineer/Consultant
Vlogic
 V Logic Systems Inc.
 2352 Main Street, Suite 207
 Concord, MA 01742
 Phone: 978-341-9000
 www.vlogicsystems.com

Project Title: **BUILDING OF FIRST FLOOR PLAN MEDICAL GAS**
 Approved Project Director: _____
 Project Title: **AS-BUILT DRAWINGS**
 Location: 1700 South Lincoln Avenue, Arlington, MA 02464-7582
 Date: 05-05-2009
 File Name: **1B-01-01W2**
 Project Number: **01**
 Building Number: _____
 Drawing Number: _____
 Date: _____ of _____

Office of Construction and Facilities Management



NO.	SYMBOL	DESCRIPTION
1	(Symbol)	DOOR
2	(Symbol)	WINDOW
3	(Symbol)	PLUMBING FIXTURE
4	(Symbol)	ELECTRICAL PANEL
5	(Symbol)	PLUMBING PIPING
6	(Symbol)	ELECTRICAL CONDUIT
7	(Symbol)	PLUMBING PIPING
8	(Symbol)	ELECTRICAL PANEL
9	(Symbol)	PLUMBING PIPING
10	(Symbol)	ELECTRICAL CONDUIT
11	(Symbol)	PLUMBING PIPING
12	(Symbol)	ELECTRICAL PANEL
13	(Symbol)	PLUMBING PIPING
14	(Symbol)	ELECTRICAL CONDUIT
15	(Symbol)	PLUMBING PIPING
16	(Symbol)	ELECTRICAL PANEL
17	(Symbol)	PLUMBING PIPING
18	(Symbol)	ELECTRICAL CONDUIT
19	(Symbol)	PLUMBING PIPING
20	(Symbol)	ELECTRICAL PANEL

Final Submission:
 Review:
 Date: 03-02-2010

Architect/Engineer/Consultant:
 Vlogic Systems Inc.
 2352 Main Street, Suite 207
 Concord, MA 01742
 Phone: 978-341-9000
 www.vlogicsystems.com

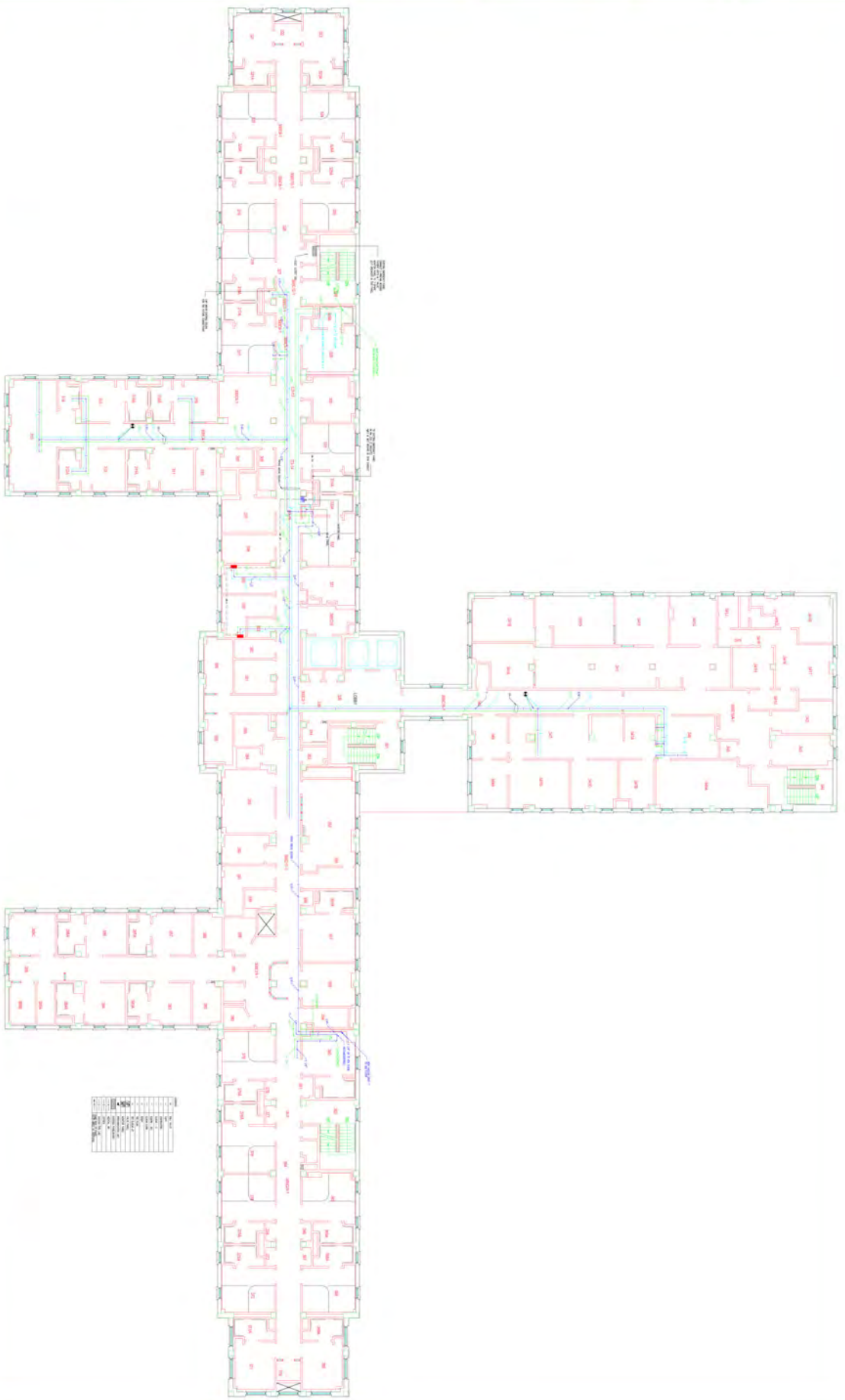
Vlogic
 V Logic Systems Inc.
 2352 Main Street, Suite 207
 Concord, MA 01742
 Phone: 978-341-9000
 www.vlogicsystems.com

Project Title:
 Approved Project Number:
 BUILDING OF SECOND FLOOR PLAN
 MEDICAL GAS

Project Title:
 Location:
 Address:
 City:
 State:
 Zip:
 AS-BUILT DRAWINGS
 1700 South Lincoln Avenue
 RA 12942-7582
 VT
 05-02-2010

Project Number:
 Building Number:
 Drawing Number:
 01
 01
 Office of Construction and Facilities Management





LEGEND		
—	WALL	0.5" = 1'-0"
—	FLOOR	1" = 1'-0"
—	DOOR	1" = 1'-0"
—	WINDOW	1" = 1'-0"
—	ELECTRICAL	1/8" = 1'-0"
—	GAS	1/8" = 1'-0"
—	MEDIA	1/8" = 1'-0"
—	PLUMBING	1/8" = 1'-0"
—	MATERIAL	1/8" = 1'-0"

Project Administration	Review	Date
		11-30-2006

Architect/Engineer/Consultant



V Logic Systems Inc.
2352 Main Street, Suite 207
Concord, MA 01742
Phone: 978-341-9000
www.vlogicsystems.com

Owner/Title

BUILDING OF THIRD FLOOR PLAN
MEDICAL GAS

Approved Project Designer

Project Title

AS-BUILT DRAWINGS

Location: 1700 South Lincoln Avenue, Lebanon, NH 03801

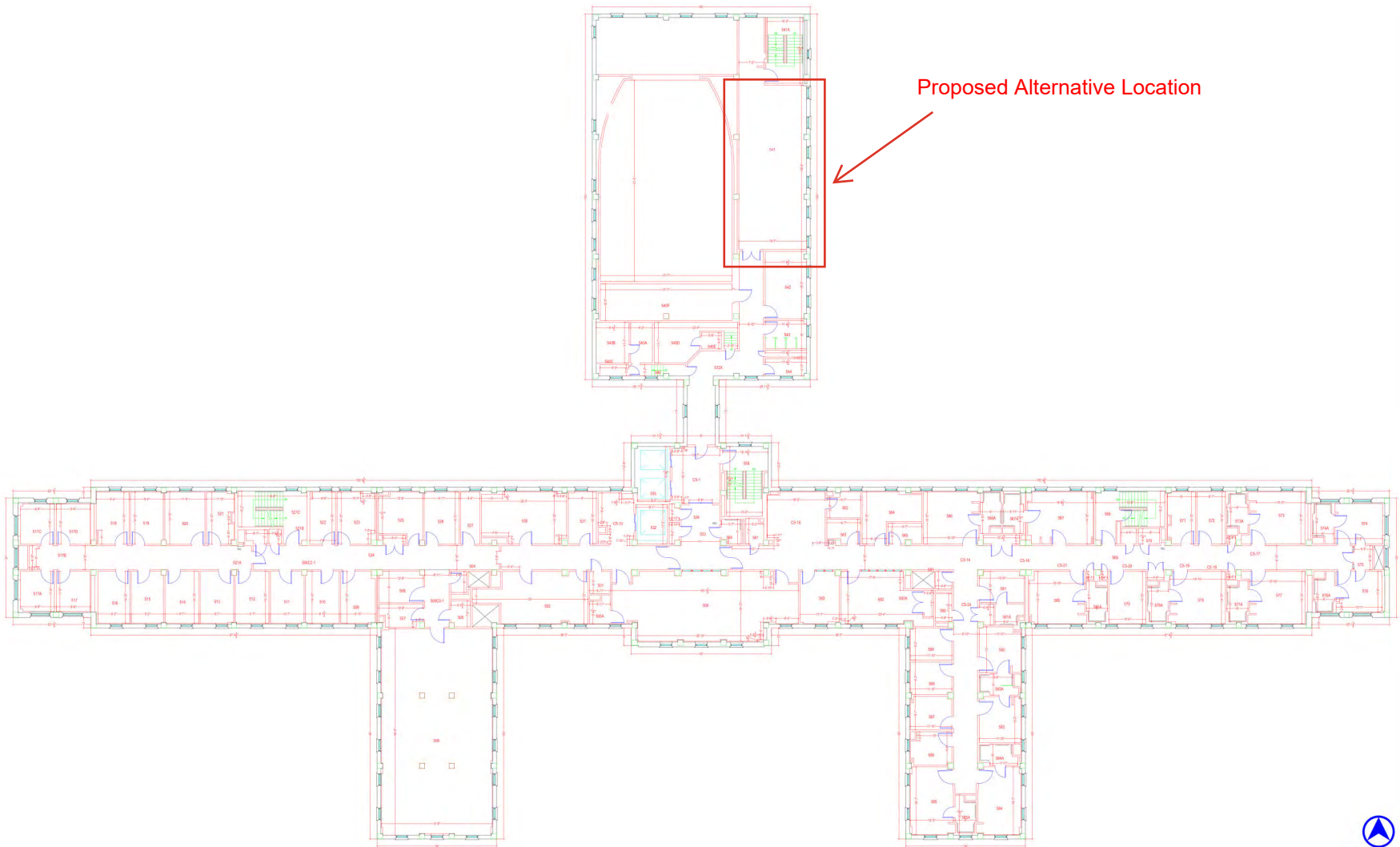
Date: 11-30-2006

Project Number

Building Number: 07
Drawing Number:

Page: 14 of

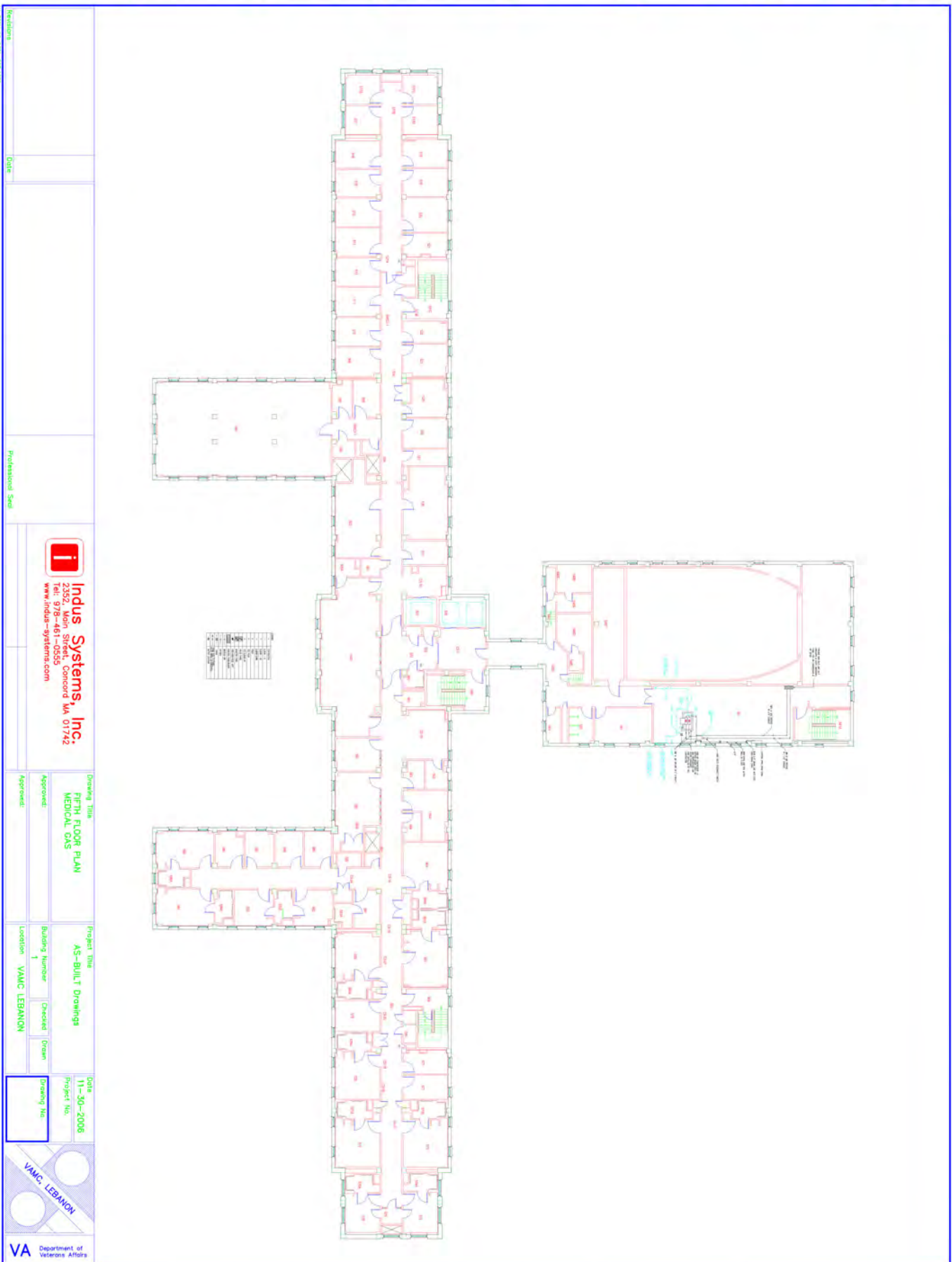
Office of Construction and Facilities Management



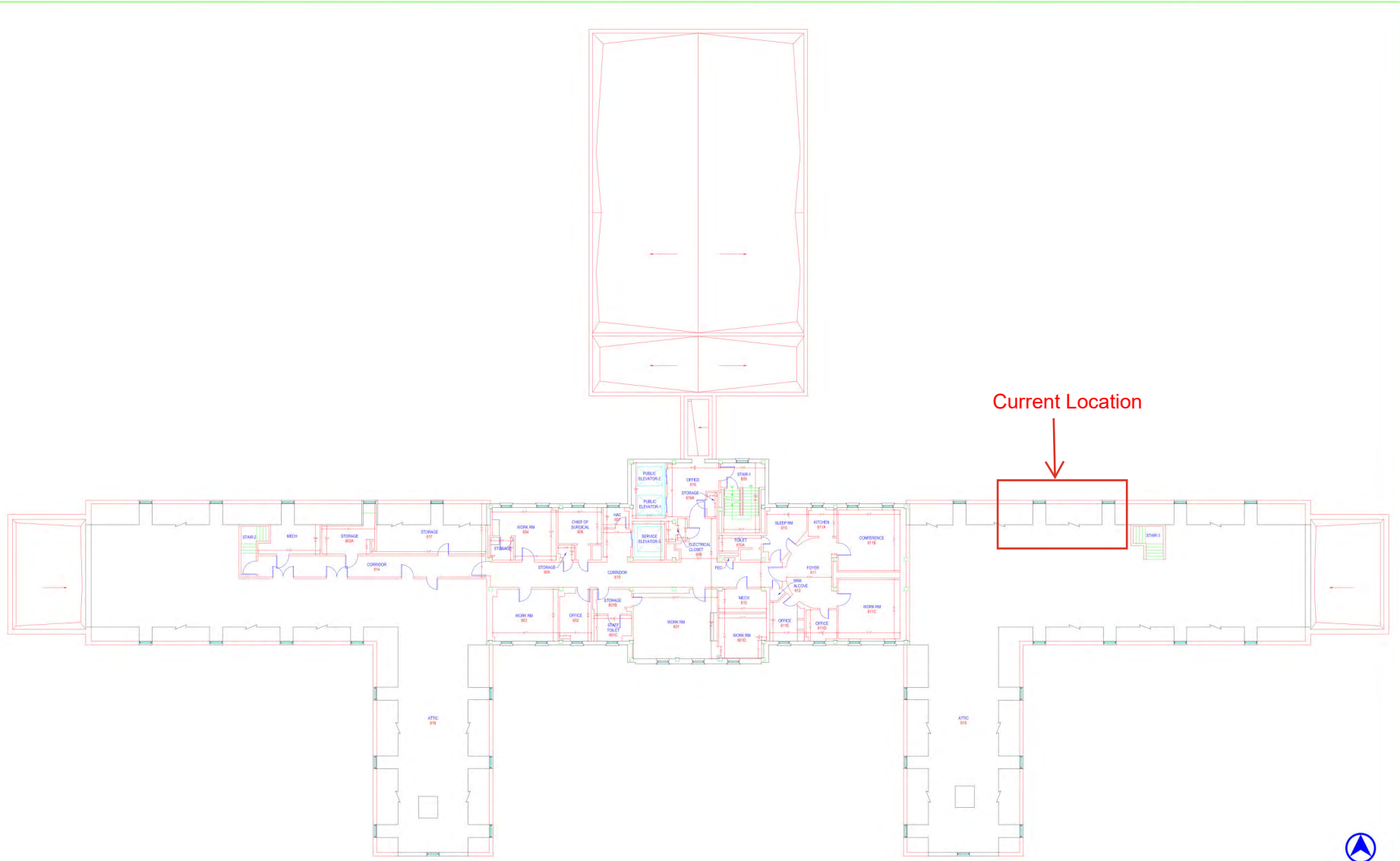
Proposed Alternative Location



Architects/Engineers/Consultants: 		 <p>V Logic Systems Inc. 2352 Main Street, Suite 207 Concord, MA 01742 Phone: 978-341-9000 www.vlogicsystems.com</p>	Drawing Title BUILDING 01 FIFTH FLOOR PLAN ARCHITECTURAL		Project Title AS-BUILT DRAWINGS		Project Number: 		
Final Submission Revisions			Approved Project Director: 		Location: 1700 South Lincoln Avenue, Lebanon, PA 17042-7528 Date: 08-16-2024 Checked:		File Name: LB-01-05AR Drawn: VL		Building Number: 01 Drawing Number: Dwg. of
08-16-2024 Date		Professional Seal		Office of Construction and Facilities Management					



Revisions	Date	Professional Seal	 Indus Systems, Inc. 2352 Main Street, Concord MA 01742 Tel: 978-461-0555 www.indus-systems.com	Drawing Title: FIFTH FLOOR PLAN MEDICAL GAS	Project Title: AS-BUILT Drawings	Date: 11-30-2006
No. Rev. Description Date 1 			Approved: 	Building Number: 1	Checked: <input type="checkbox"/> Open	Project No.:
			Approved: 	Location: VAMC LEBANON	Drawing No.: 	
						




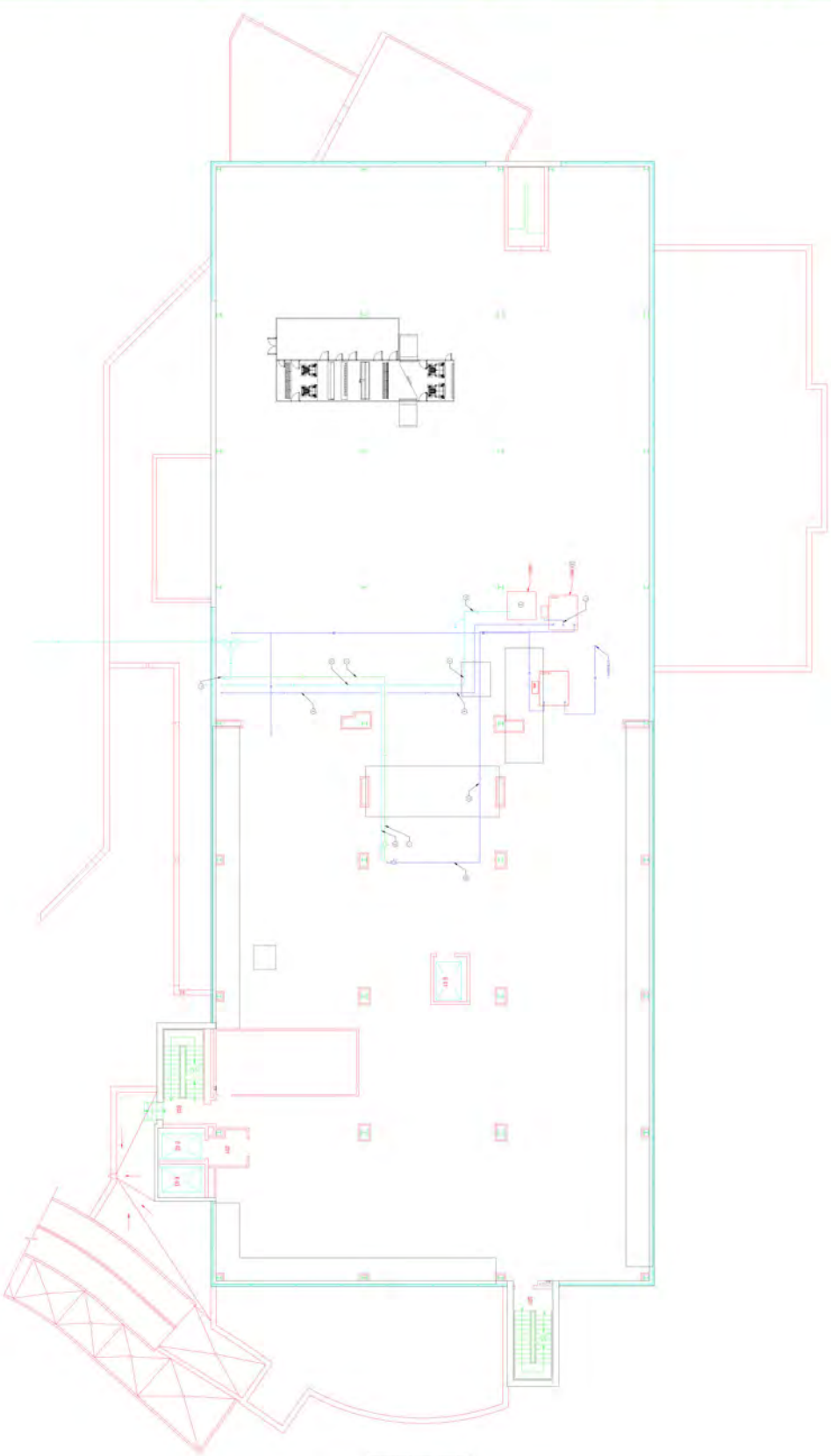
Current Location
↓



Architects/Engineers/Consultants:		 <p>V Logic Systems Inc. 2352 Main Street, Suite 207 Concord, MA 01742 Phone: 978-341-9000 www.vlogicsystems.com</p>	Drawing Title BUILDING 01 SIXTH FLOOR PLAN ARCHITECTURAL		Project Title AS-BUILT DRAWINGS		Project Number: 01		<p>Office of Construction and Facilities Management</p> 
Final Submission	08-16-2024		Approved Project Director:		Location: 1700 South Lincoln Avenue, Lebanon, PA 17042-7528		File Name: LB-01-06AR		
Revisions	Date	Professional Seal			Date: 08-16-2024	Drawn: VL	Dwg. of		



Revisions	Date	Professional Seal	 Indus Systems, Inc. 2352 Main Street, Concord MA 01742 Tel: 978-461-0555 www.indus-systems.com	Drawing Title SIXTH FLOOR PLAN MEDICAL GAS	Project Title AS-BUILT Drawings	Date 05-02-2014
No. Rev. Description 1				Approved: Approved:	Building Number 1	Project No.
				Approved: Approved:	Checked: <input type="checkbox"/> Open <input checked="" type="checkbox"/> Drawn	Drawing No.
					Location VAMC LEBANON	
						



SYMBOL	DESCRIPTION
(Symbol)	MECHANICAL
(Symbol)	ELECTRICAL
(Symbol)	PLUMBING
(Symbol)	STRUCTURAL
(Symbol)	GENERAL
(Symbol)	VACUUM PIPING

Final Submission
 Review
 11-23-2021
 Date

Architect/Engineer/Consultant
 V Logic Systems Inc.
 2352 Main Street, Suite 207
 Concord, MA 01742
 Phone: 978-341-9000
 www.vlogicsystems.com

V Logic
 V Logic Systems Inc.
 2352 Main Street, Suite 207
 Concord, MA 01742
 Phone: 978-341-9000
 www.vlogicsystems.com

Drawing Title
 BUILDING 104 FIRST INTERSTITIAL
 MEDICAL GAS

Project Title
 AS-BUILT DRAWINGS

Location: 770 South
 Lincoln Ave.
 Leiston, Vermont
 11-23-2021

Project Number:
 Building Number:
 Drawing Number:
 Date: 11-23-2021

Office of
 Facilities
 Management



Scale: 1/8" = 1'-0"