

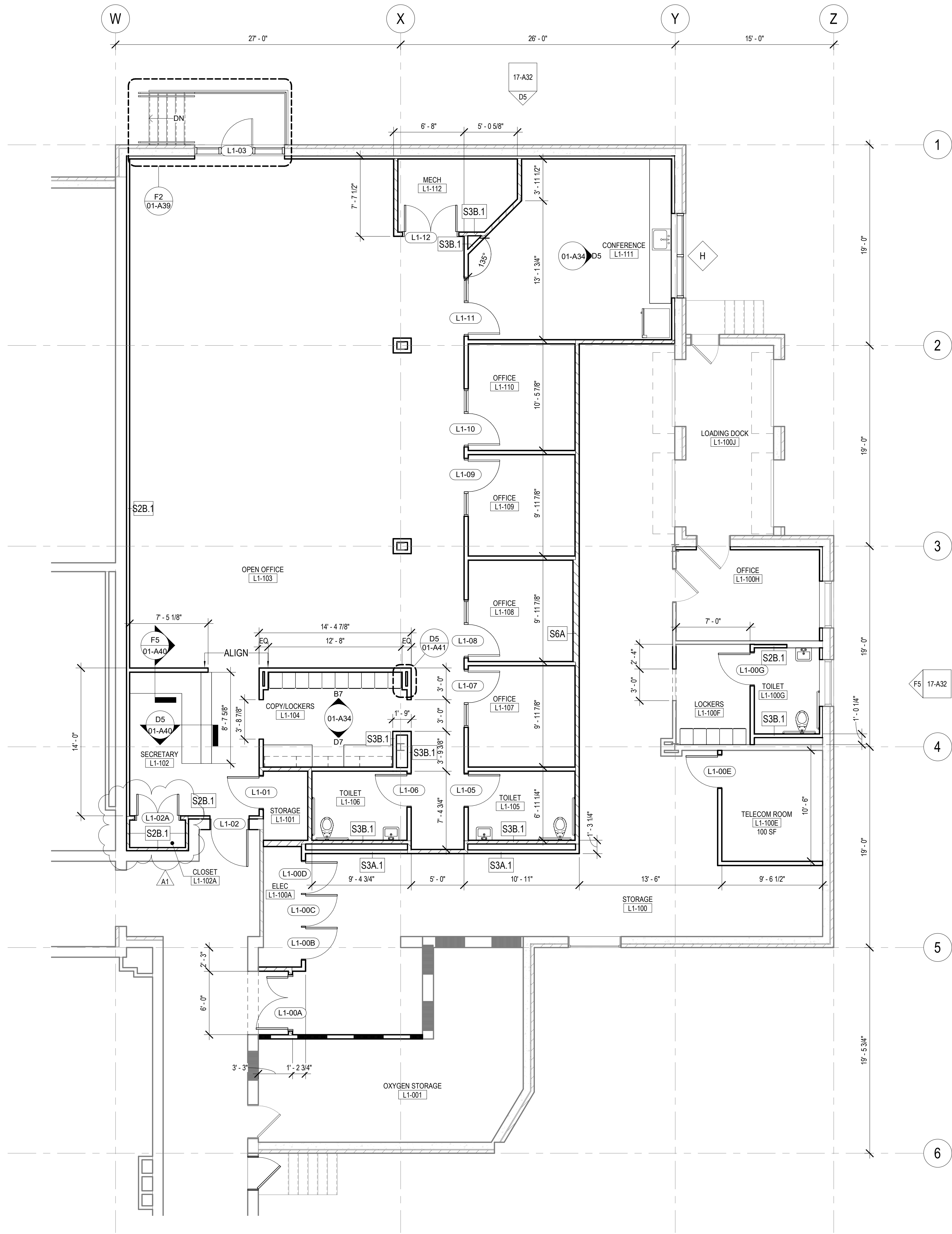






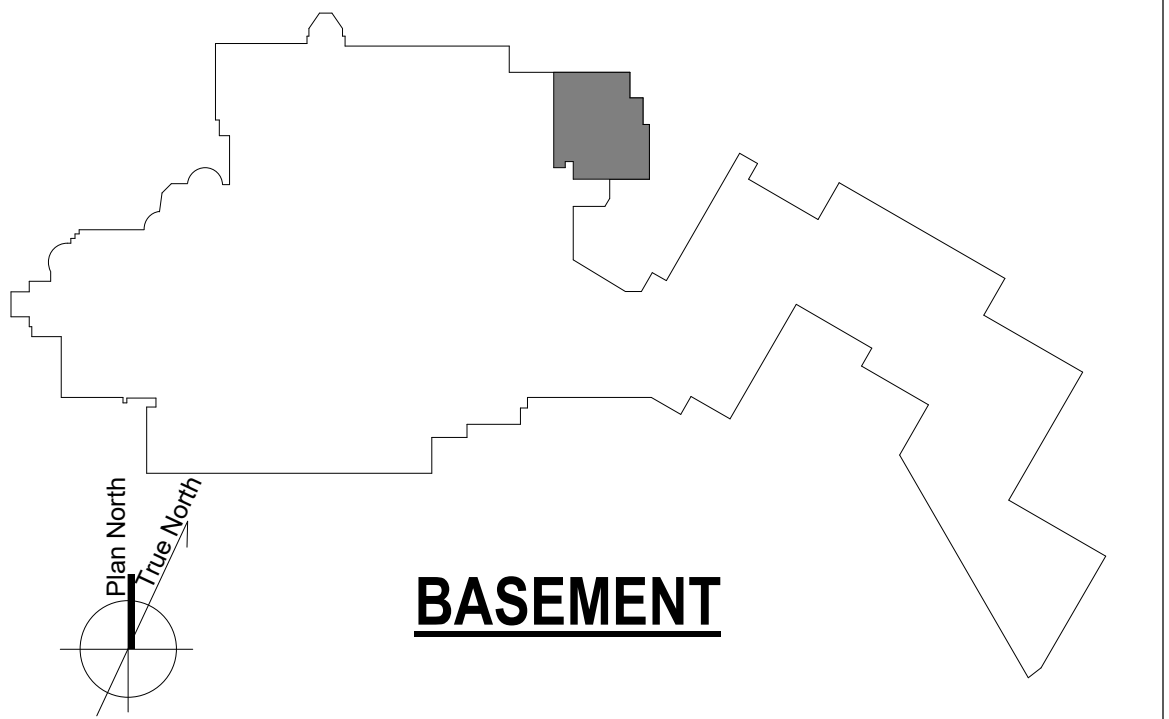
**GENERAL NOTES**

- A. REFER TO SHEET 01-13 FOR ADDITIONAL GENERAL NOTES THAT ARE APPLICABLE.
- B. REFER TO ENLARGED FLOOR PLANS FOR ADDITIONAL INFORMATION AND DIMENSIONS.
- C. ALIGN NEW PARTITIONS WITH ADJACENT EXISTING PARTITIONS WHERE NEW PARTITION EXTENDS IN THE SAME DIRECTION.
- D. ALIGN CENTER OR FINISH FACE OF PARTITION WITH CENTER OF WINDOW MULLION, UNLESS NOTED OTHERWISE.
- E. PARTITIONS TO BE TYPE S3B, UNLESS NOTED OTHERWISE. FURRING ALONG EXTERIOR WALLS TO BE S2B.1, UNLESS NOTED OTHERWISE.
- F. REFER TO WINDOW TYPES FOR DIMENSIONS AND ADDITIONAL INFORMATION.



F4 WAREHOUSE FLOOR PLAN  
3/16" = 1'-0"

**KEY PLAN**



**BASEMENT**

1  
2  
3  
4  
5  
6  
7  
8  
9  
10  
 A  
B  
C  
D  
E  
F  
 7/10/2024 10:35:51 AM  
 C:\Rev\2024\17-015\_ARCH\17-015\_ARCH\17-015\_ARCH\F4.dwg  
 VA FORM 88 - 6231

Number	Revisions	Date
0	100% CONSTRUCTION DOCUMENTS	04/18/2023
A1	ADDENDUM 1	06/28/2024

**CONSULTANTS:**

**ARCHITECT/ENGINEERS:**

**VALHALLA ENGINEERING GROUP, LLC**

750 W HAMPTON AVE  
SUITE 300  
ENGLEWOOD, CO 80110  
(720) 590-6307  
WWW.VALHALLAENGINEERING.COM

**STAMP:**

VEG 19.25



**Drawing Title**

FLOOR PLAN - WAREHOUSE

**Approved:** Project Director

**Phase**

100% CONSTRUCTION DOCUMENTS

<b>Project Title</b>	RENOVATE 9TH FLOOR MENTAL HEALTH	<b>Project Number</b>	693-19-106
<b>Location</b>	1111 EAST END BLVD, WILKES-BARRE, PA 18711	<b>Building Number</b>	17
<b>Issue Date</b>	04/18/2023	<b>Checked</b>	DR
		<b>Drawn</b>	ZAM
		<b>Drawing Number</b>	17-A15
			DWG 15 of 53

FINAL DRAWINGS SUBMITTAL









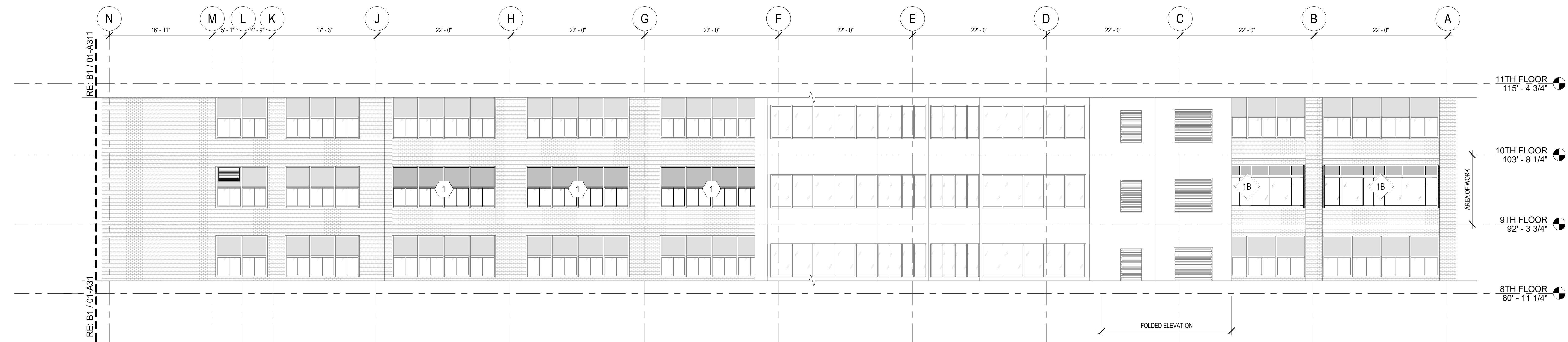
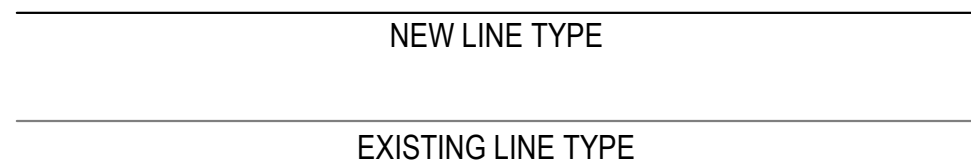
**GENERAL NOTES**

- A. REFER TO SHEET 01-13 AND 01-A1 FOR ADDITIONAL GENERAL NOTES THAT ARE APPLICABLE.
- B. EXTERIOR WINDOW PROFILES FOR SOUTH AND WEST ELEVATIONS ARE REPRESENTATIVE OF INFORMATION FROM DRAWINGS PROVIDED TO VALHALLA FROM VHA COR ON 02/10/2020 FROM VHA PROJECT #693-13-111. WINDOW SIZES HAVE BEEN MODIFIED TO MATCH EXISTING OPENINGS AS UNDERSTOOD BY VALHALLA AND ARE TO BE VERIFIED IN FIELD.
- C. REFER TO WINDOW TYPES FOR DIMENSIONS AND ADDITIONAL INFORMATION.

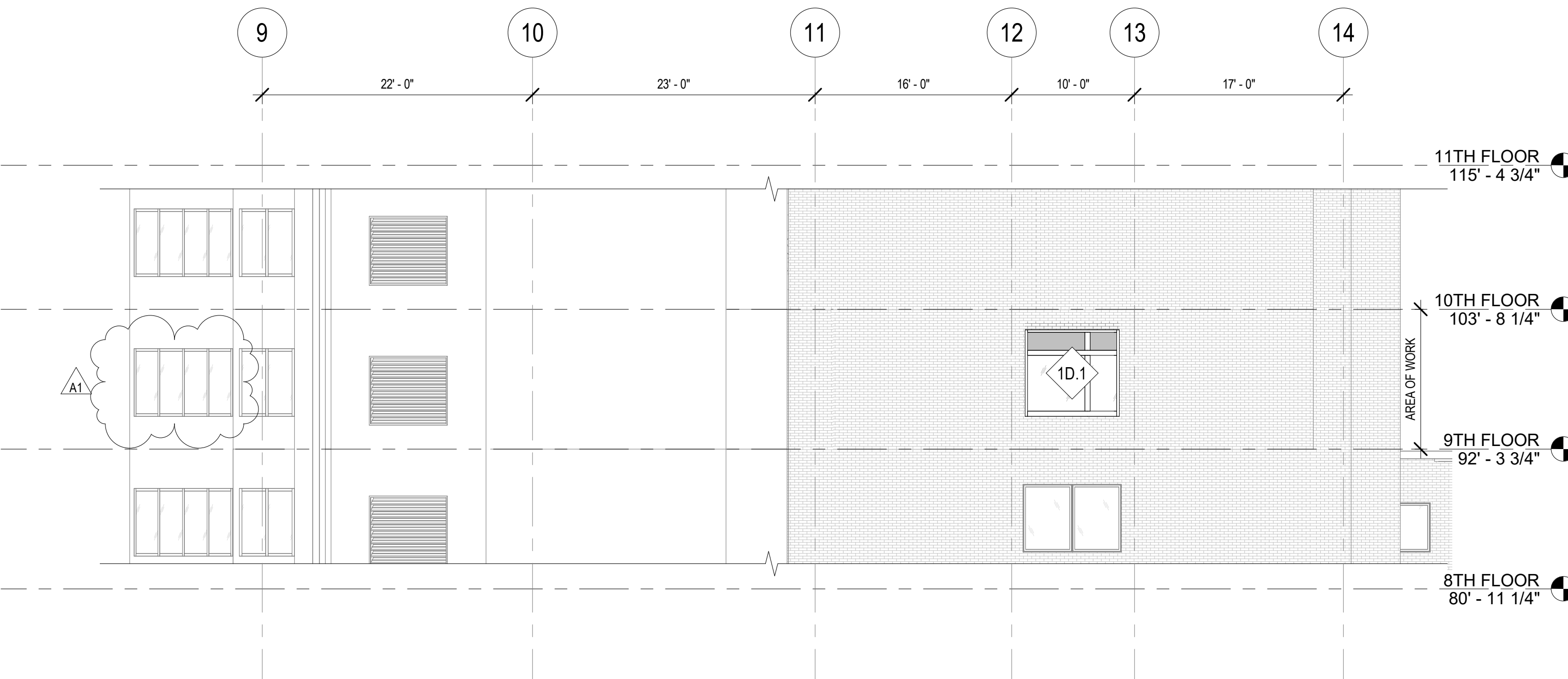
**KEYNOTES**

- 1 INSTALL NEW LAMINATED GLAZING AND SPANDREL PANELS IN EXISTING WINDOW FRAME TO MATCH EXISTING LAYOUT. WINDOWS TO HAVE INTEGRAL BLINDS BETWEEN LAYERS OF GLAZING.

**EXTERIOR ELEVATION LEGEND**



**B1** NORTH ELEVATION - WEST  
1/8" = 1'-0"



**D5** WEST ELEVATION  
1/8" = 1'-0"



**F1** SOUTH ELEVATION - WEST  
1/8" = 1'-0"

0	100% CONSTRUCTION DOCUMENTS	04/18/2023
A1	ADDENDUM 1	06/28/2024
Number:	Revisions:	Date:

**CONSULTANTS:**

**ARCHITECT/ENGINEERS:**

750 W HAMPTON AVE  
SUITE 300  
ENGLEWOOD, CO 80110  
(720) 590-6307  
WWW.VALHALLAENGINEERING.COM

**STAMP:**

VEG 19.25

**Drawing Title:**  
EXTERIOR ELEVATIONS

**Approved:** Project Director

**Phase:**  
100% CONSTRUCTION DOCUMENTS

<b>Project Title:</b> RENOVATE 9TH FLOOR MENTAL HEALTH	<b>Project Number:</b> 693-19-106
<b>Location:</b> 1111 EAST END BLVD, WILKES-BARRE, PA 18711	<b>Building Number:</b> 01
<b>Issue Date:</b> 04/18/2023	<b>Checked:</b> DR
<b>Drawn:</b> ZAM	<b>Drawing Number:</b> 01-A30
	<b>DWG 30 of 53</b>

FINAL DRAWINGS SUBMITTAL









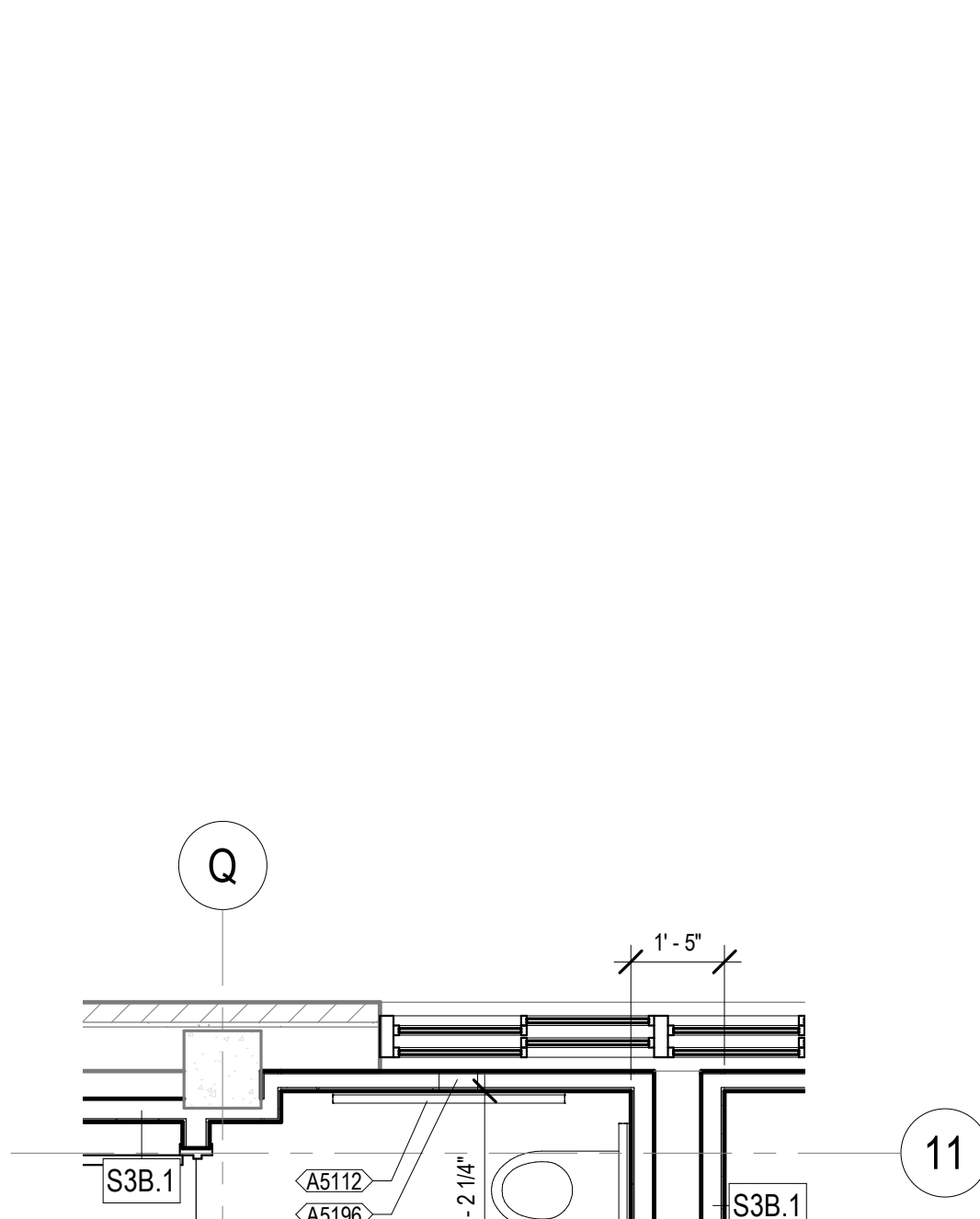




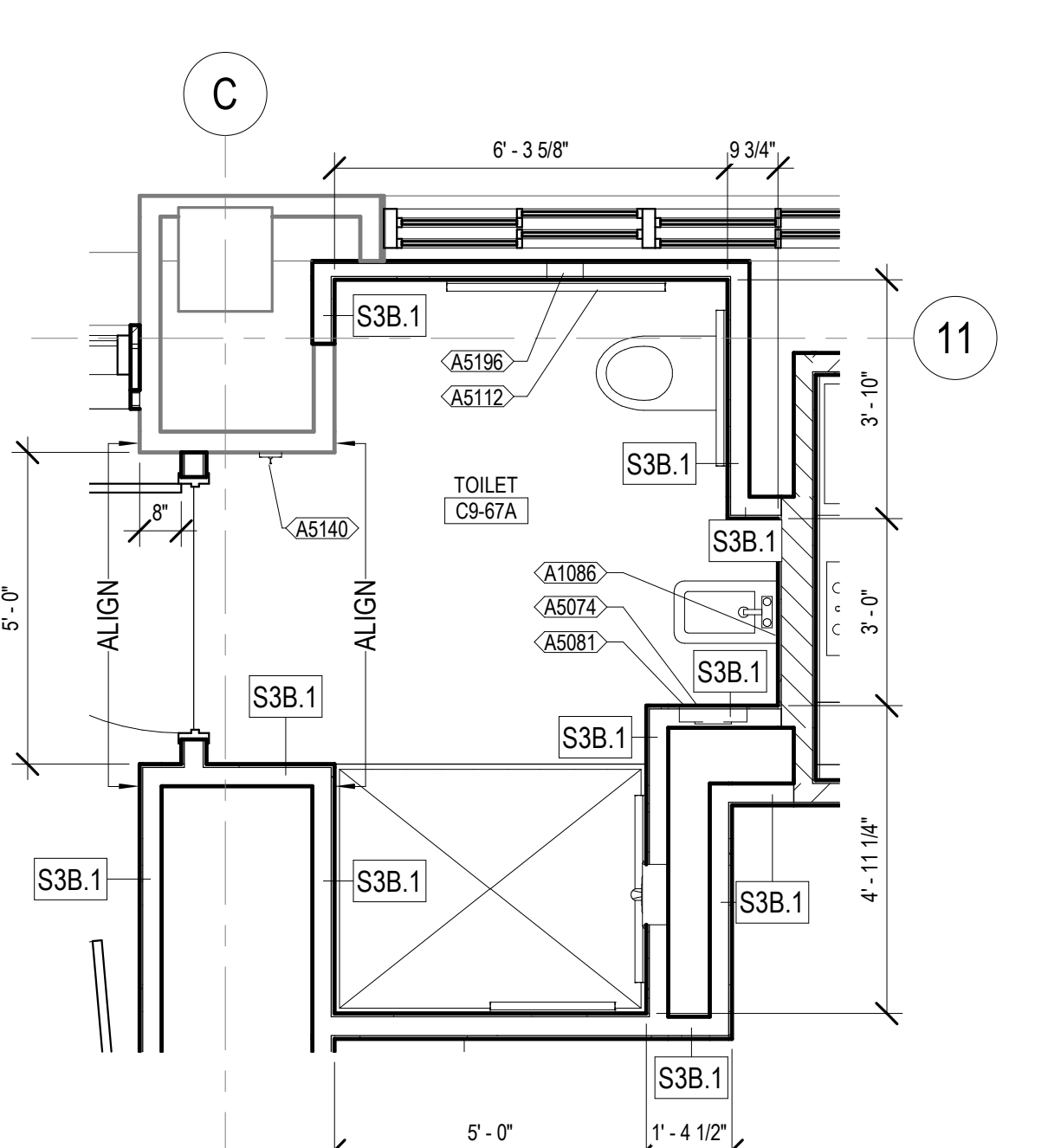


**GENERAL NOTES**

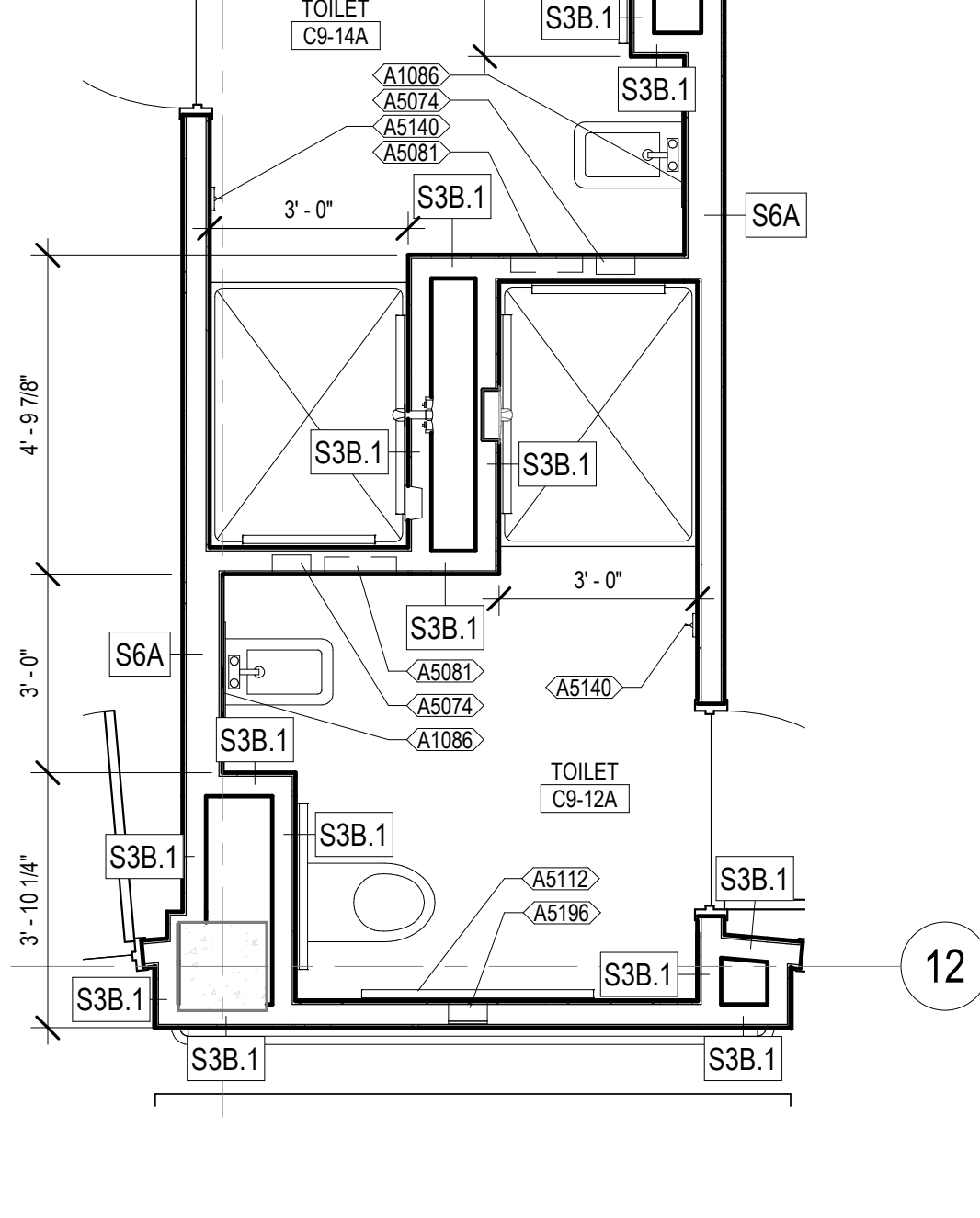
- A. REFER TO STRUCTURAL, MECHANICAL, PLUMBING AND ELECTRICAL DRAWINGS FOR MORE INFORMATION.
- B. REFER TO SHEET 01-13 FOR ADDITIONAL GENERAL NOTES THAT ARE APPLICABLE.
- C. REFER TO SHEET 01-14 ACCESSIBILITY GUIDELINES FOR MOUNTING HEIGHTS OF FIXTURES AND ACCESSORIES.
- D. ALIGN NEW WALLS WITH ADJACENT EXISTING WALLS WHERE NEW WALL EXTENDS IN THE SAME DIRECTION.
- E. ALIGN CENTER OF DEMISING WALLS OR FINISH FACE OF CHASE WALLS WITH CENTER OF WINDOW MULLION, UNLESS NOTED OTHERWISE.
- F. PARTITIONS TO BE TYPE S3A, UNLESS NOTED OTHERWISE. FURRING ALONG EXTERIOR WALLS TO BE S2B.1, UNLESS NOTED OTHERWISE.
- G. REFER TO WINDOW TYPES FOR DIMENSIONS AND ADDITIONAL INFORMATION.



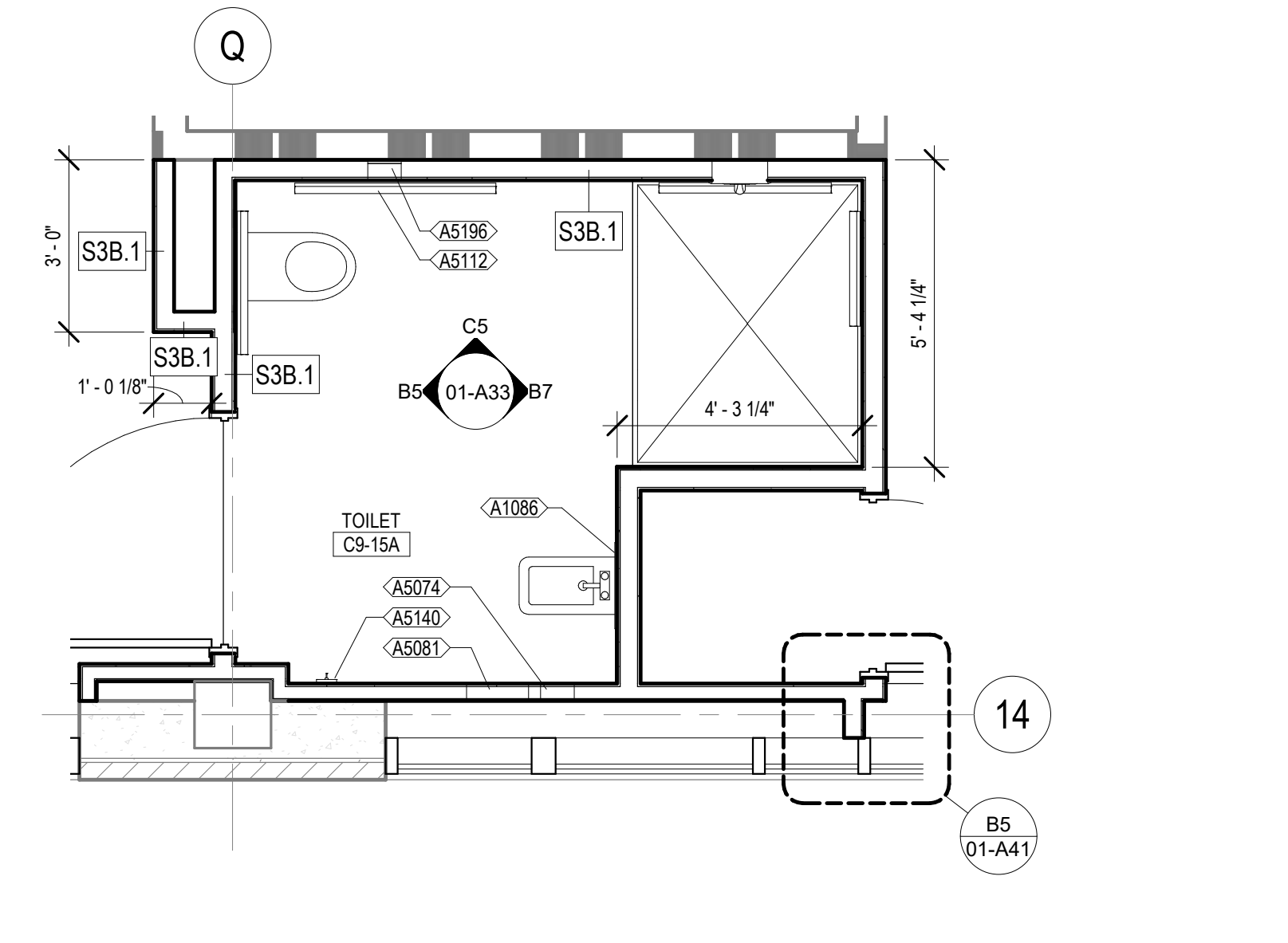
**B3** ENLARGED RESTROOM PLAN - C9-05 AND C9-08A  
3/8" = 1'-0"



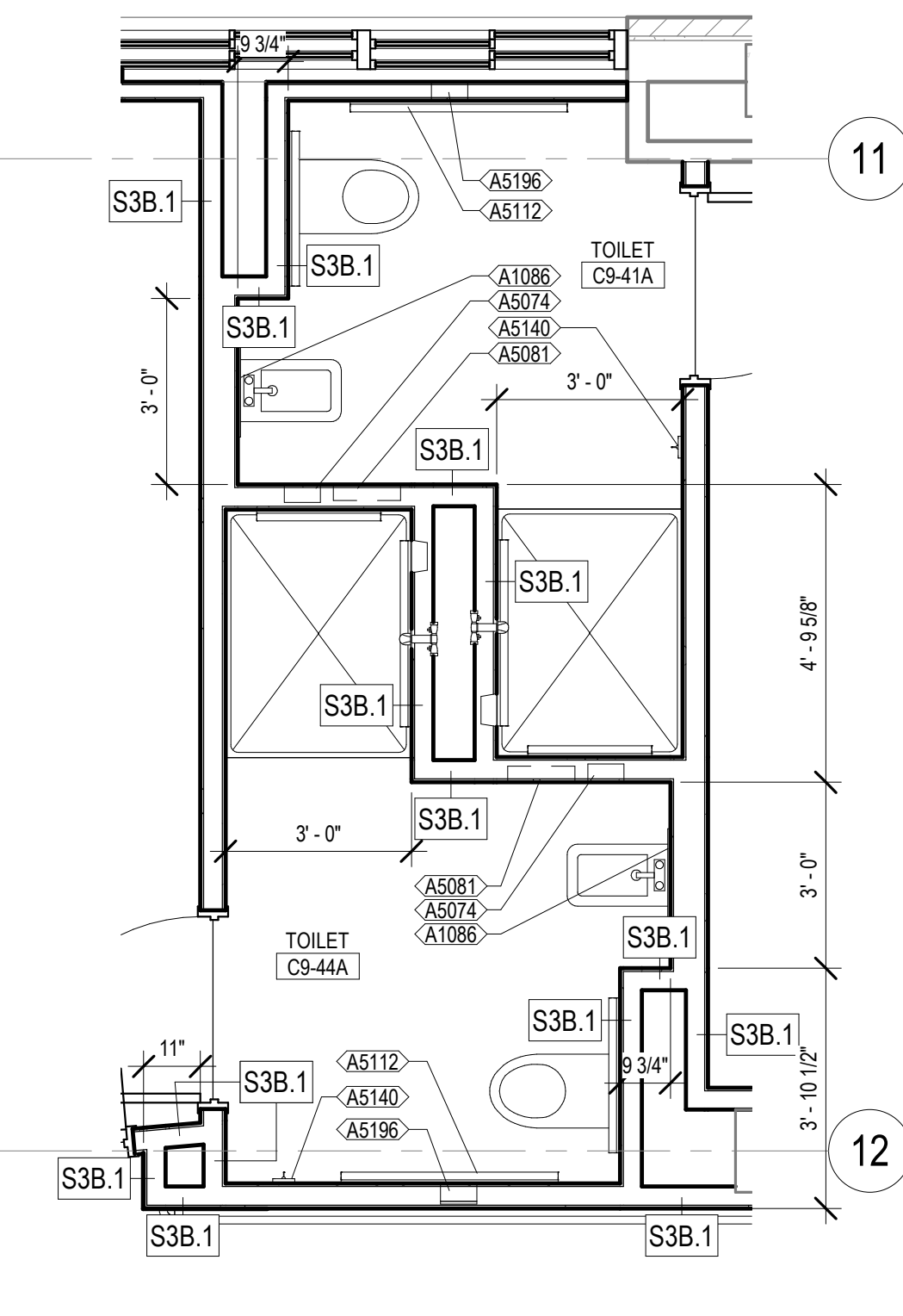
**B7** ENLARGED RESTROOM PLAN - C9-67A  
3/8" = 1'-0"



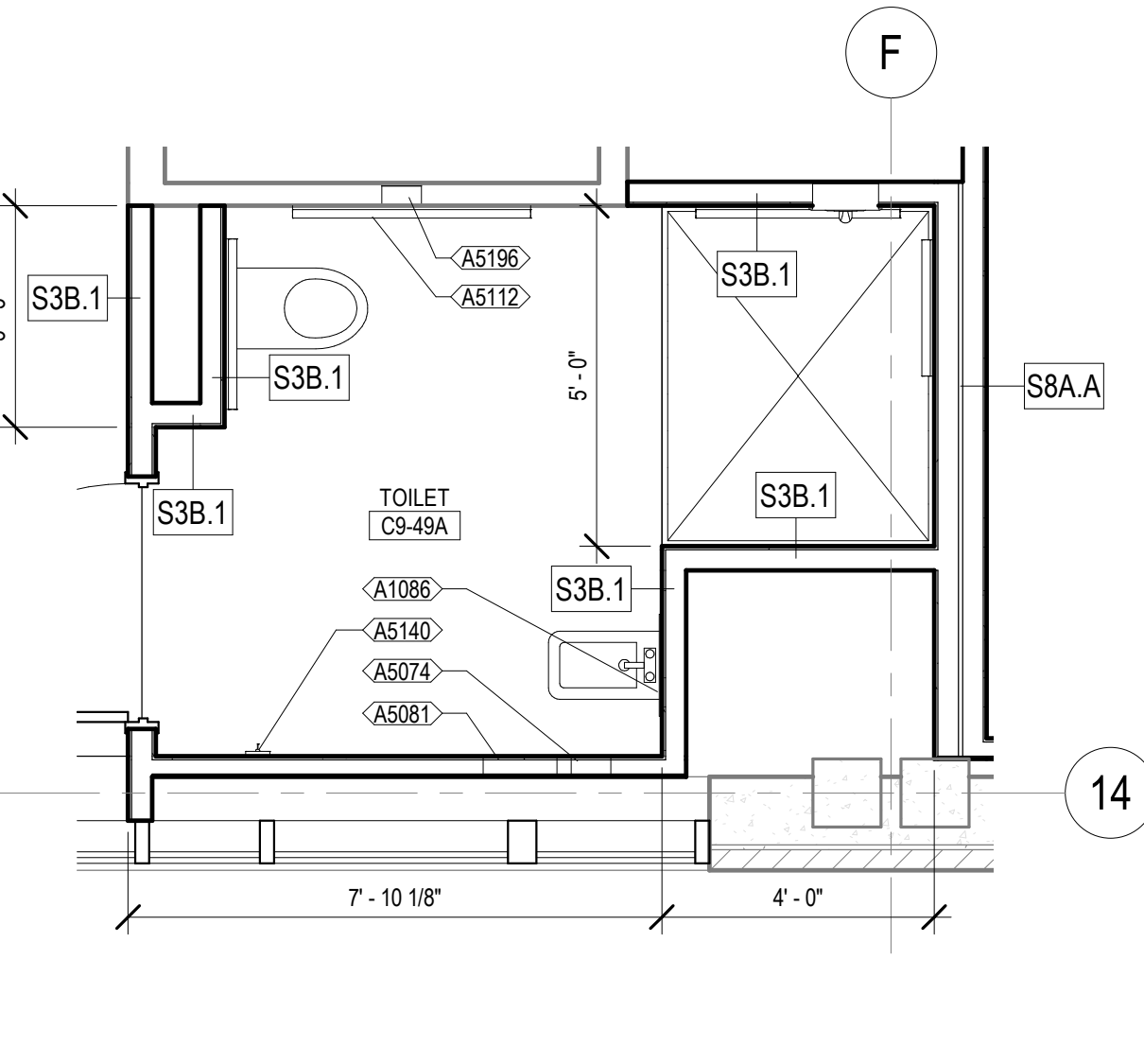
**D1** ENLARGED RESTROOM PLAN - C9-12A AND C9-14A  
3/8" = 1'-0"



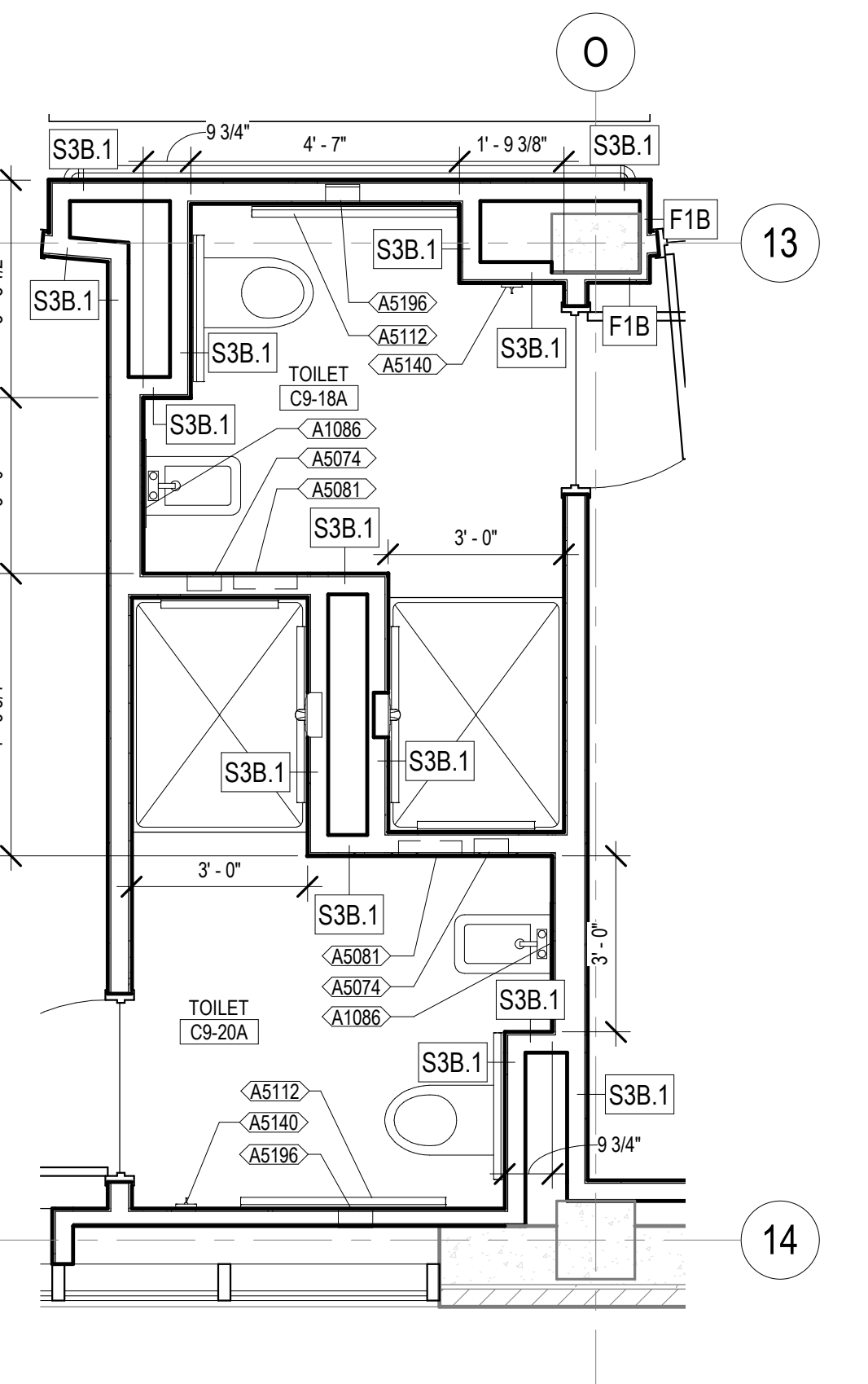
**D3** ENLARGED RESTROOM PLAN - C9-15A  
3/8" = 1'-0"



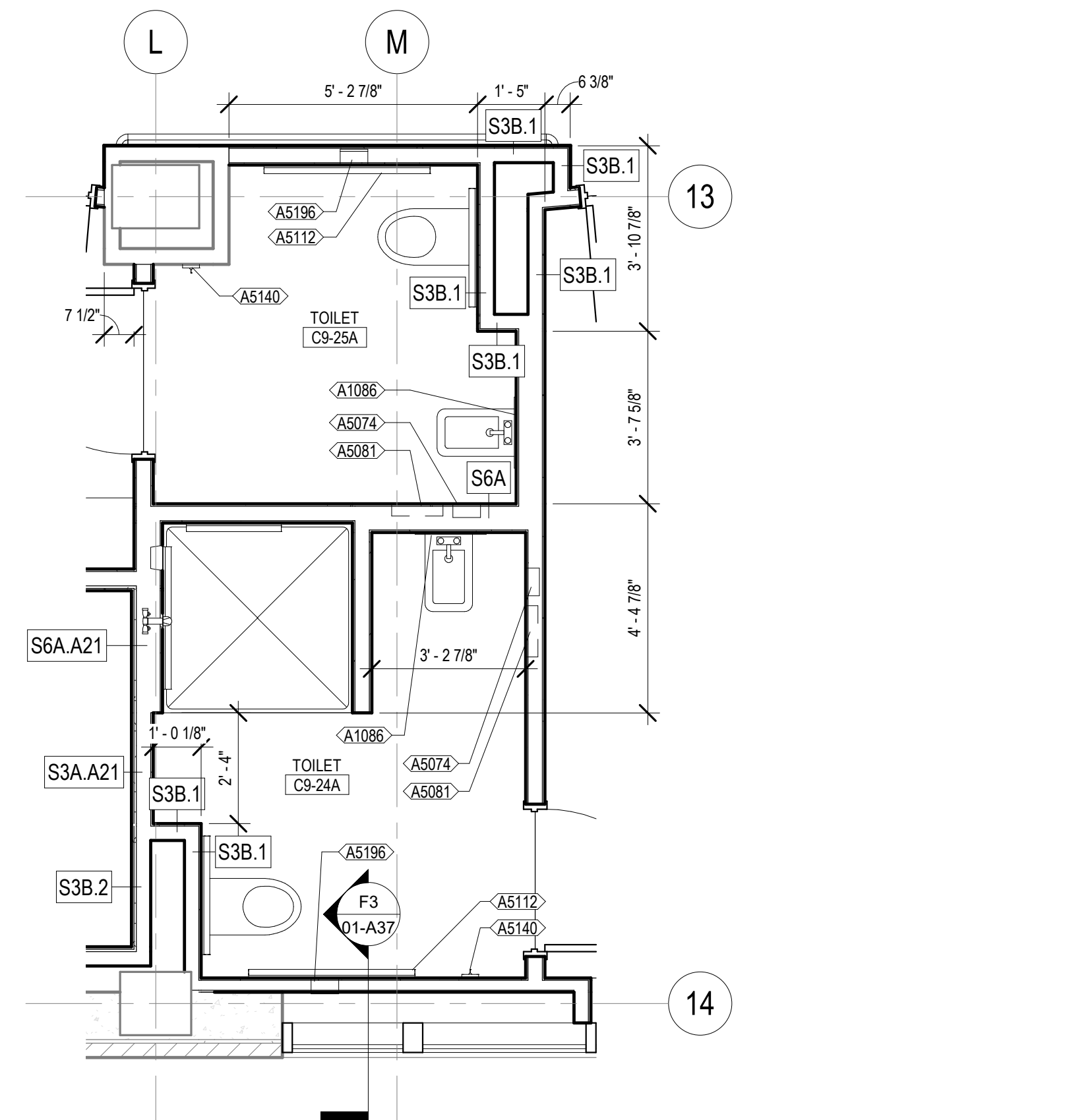
**D5** ENLARGED RESTROOM PLAN - C9-41A AND C9-44A  
3/8" = 1'-0"



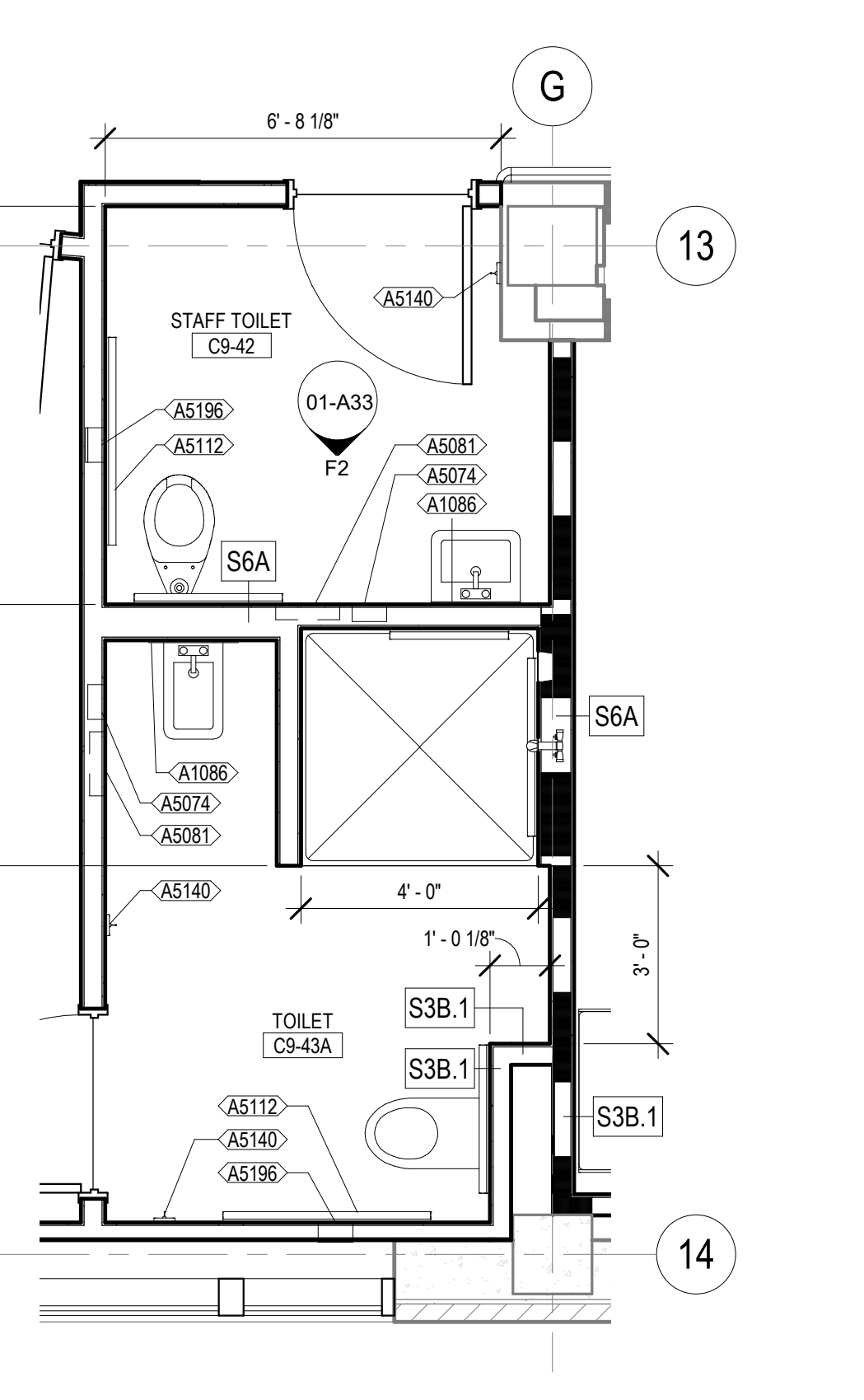
**D7** ENLARGED RESTROOM PLAN - C9-49A  
3/8" = 1'-0"



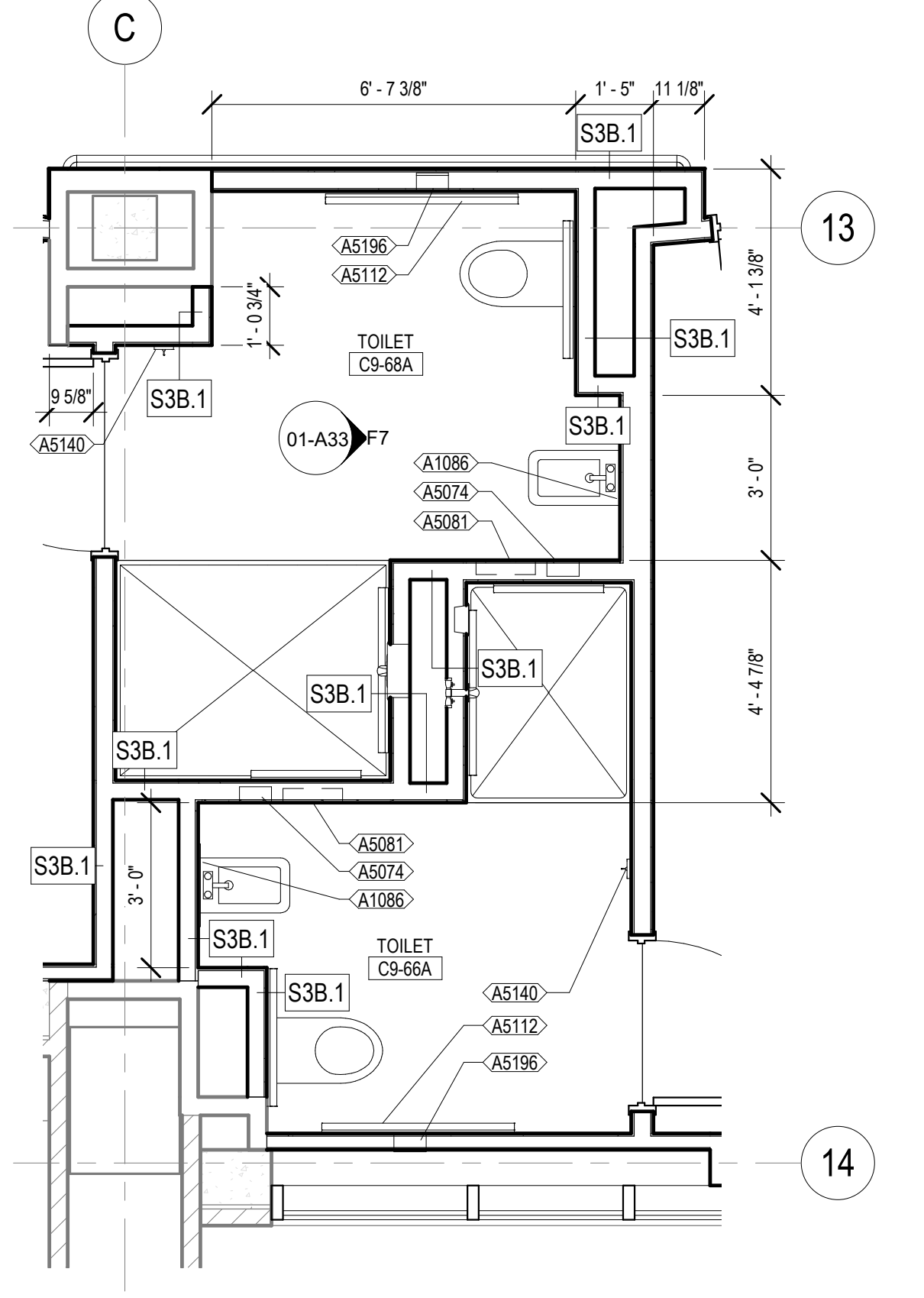
**F1** ENLARGED RESTROOM PLAN - C9-18A AND C9-20A  
3/8" = 1'-0"



**F3** ENLARGED RESTROOM PLAN - C9-24A AND C9-25A  
3/8" = 1'-0"



**F5** ENLARGED RESTROOM PLAN - C9-42 AND C9-43A  
3/8" = 1'-0"



**F7** ENLARGED RESTROOM PLAN - C9-66A AND C9-68A  
3/8" = 1'-0"

TOILET ROOM ACCESSORY SCHEDULE		
JSN	DESCRIPTION	REMARKS
A5196	DISPENSER, TOILET TISSUE, PSYCHIATRIC	
A1086	MIRROR, SAFETY, PSYCHIATRIC	
A5081	DISPENSER, PAPER TOWEL, PSYCHIATRIC	
A5074	SOAP DISH, RECESSED, SS, PSYCHIATRIC	
A5109	GRAB BAR, 1-1/4" DIA, SS, 2 WALL, W/C ACCESSIBLE	
A5140	HOOK, GARMENT, SECURITY	

0	100% CONSTRUCTION DOCUMENTS	04/18/2023
A1	ADDENDUM 1	06/28/2024
Number:	Revisions:	Date:

**CONSULTANTS:**

**ARCHITECT/ENGINEERS:**

**VALHALLA ENGINEERING GROUP, LLC**

750 W HAMPDEN AVE  
SUITE 300  
ENGLEWOOD, CO 80110  
(720) 560-6307  
WWW.VALHALLAENGINEERING.COM

VEG 19.25

**STAMP:**

U.S. Department of Veterans Affairs

Drawing Title  
**ENLARGED FLOOR PLANS**

Approved: Project Director

Phase  
**100% CONSTRUCTION DOCUMENTS**

Project Title <b>RENOVATE 9TH FLOOR MENTAL HEALTH</b>	Project Number <b>693-19-106</b>
Location 1111 EAST END BLVD, WILKES-BARRE, PA 18711	Building Number <b>01</b>
Issue Date <b>04/18/2023</b>	Checked <b>DR</b>
Drawn <b>ZAM</b>	Drawing Number <b>01-A38</b>
	DWG 38 of 53

FINAL DRAWINGS SUBMITTAL















**GENERAL NOTES**

- A. REFER TO SHEET 01-13 AND 01-A1 FOR ADDITIONAL GENERAL NOTES THAT ARE APPLICABLE.
- B. EXTERIOR WINDOW PROFILES FOR SOUTH AND WEST ELEVATIONS ARE REPRESENTATIVE OF INFORMATION FROM DRAWINGS PROVIDED TO VALHALLA FROM VHA COR ON 02/10/2020 FROM VHA PROJECT #693-13-111. WINDOW SIZES HAVE BEEN MODIFIED TO MATCH EXISTING OPENINGS AS UNDERSTOOD BY VALHALLA AND ARE TO BE VERIFIED IN FIELD.

**GLAZING TYPE SCHEDULE**

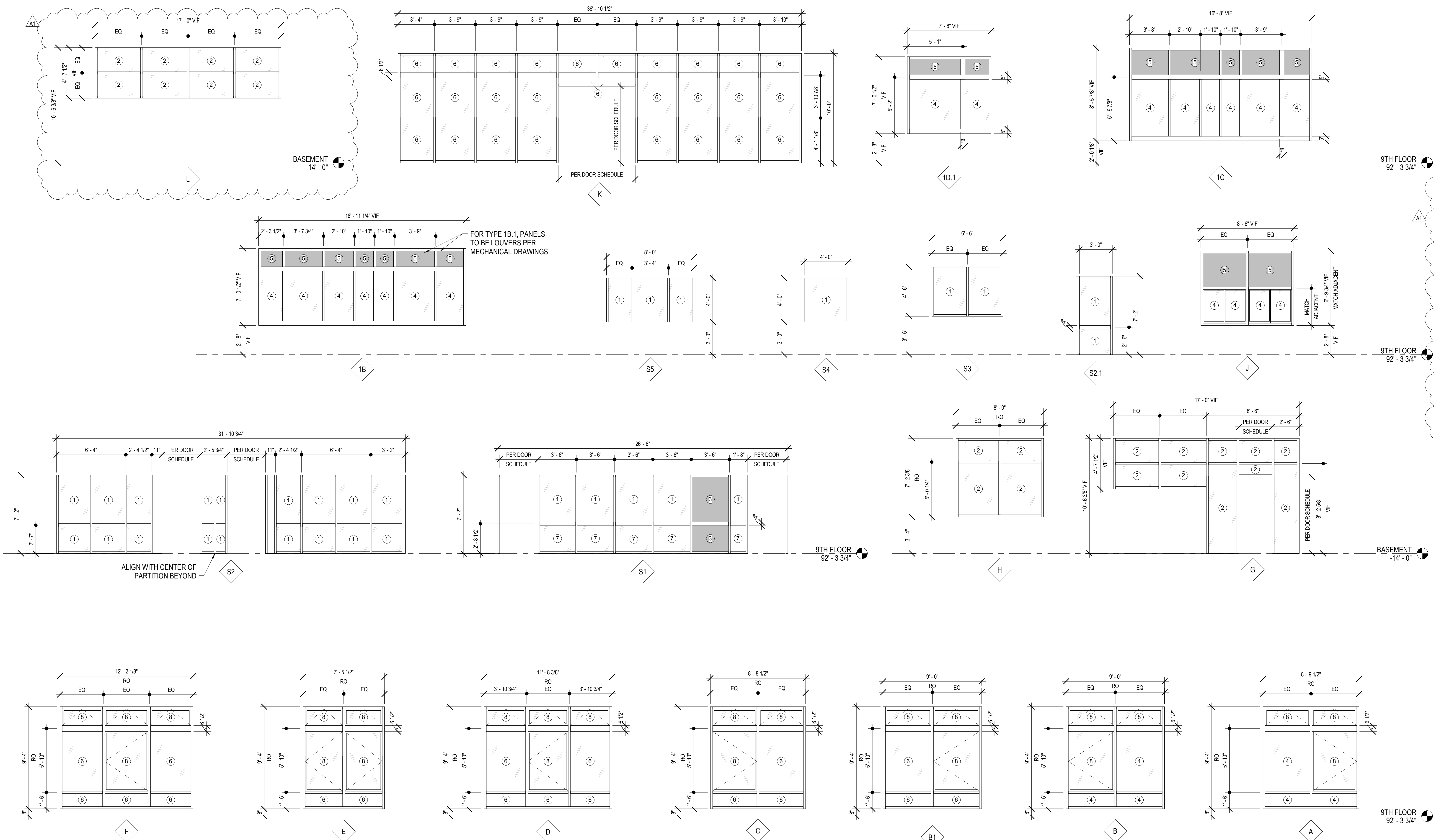
TYPE	IMAGE	DESCRIPTION
1		3/8" POLYCARBONATE, CLEAR
2		DOUBLE PANED, LOW-E, ARGON FILLED GLAZING, CLEAR
3		7/16" LAMINATED SPANDREL PANEL
4		DOUBLE PANED, LOW-E, ARGON FILLED GLAZING WITH 3/8" POLYCARBONATE ON INTERIOR, CLEAR
5		INSULATED SPANDREL GLAZING UNIT, DOUBLE PANED, ARGON FILLED
6		DOUBLE PANED, LOW-E, ARGON FILLED GLAZING WITH 3/8" POLYCARBONATE BOTH PANES, CLEAR
7		3/8" POLYCARBONATE, BOD: LUMICOR LUMIFORM NATURAL - COASTAL
8		OPERABLE PANE, GLAZING TYPE TO MATCH REST OF SYSTEM, BOD: KAWNEER GLASSVENT WINDOWS FOR CURTAIN WALL

**STOREFRONT/CURTAIN WALL SCHEDULE**

TYPE	FRAME TYPE	HEAD DETAIL	JAMB DETAIL	SILL DETAIL
1B	2	E3/01-A48	E3/01-A48 SIM	F3/01-A48
1B.1	2	E3/01-A48	E3/01-A48 SIM	F3/01-A48
1C	2	E3/01-A48	E3/01-A48 SIM	F3/01-A48
1D.1	2	E3/01-A48	E3/01-A48 SIM	F3/01-A48
A	1	C5/01-A44	RE: 01-A41	RE: 01-A43
B	1	C5/01-A44	RE: 01-A41	RE: 01-A43
B1	1	F5/01-A44	RE: 01-A41	RE: 01-A43
C	1	F5/01-A44	RE: 01-A41	RE: 01-A43
D	1	C1/01-A44	RE: 01-A41	RE: 01-A43
E	1	C1/01-A44	RE: 01-A41	RE: 01-A43
F	1	C1/01-A44	RE: 01-A41	RE: 01-A43
G	1	E7/01-A48	E5/01-A48	F5 & F7/01-A48
H	1	E7/01-A48	E5/01-A48	F7/01-A48
J	4	C5/01-A48	C5/01-A48 SIM	C5/01-A48
K	1	F1/01-A44	RE: 01-A41	C7/01-A48
L	1	E7/01-A48	E5/01-A48	F7/01-A48
S1	3	E1/01-A48	D7 & C7/01-A42	F1/01-A48
S2	3	E1/01-A48	C1/01-A48	F1/01-A48
S2.1	3	E1/01-A48	C1/01-A48	F1/01-A48
S3	3	C1/01-A48	C1/01-A48	C1/01-A48
S4	3	C1/01-A48	C1/01-A48	C1/01-A48
S5	3	C1/01-A48	C1/01-A48	C1/01-A48

**STOREFRONT/CURTAIN WALL FRAME SCHEDULE**

FRAME TYPE	DESCRIPTION
1	BOD: KAWNEER 1600 WALL SYSTEM 1, 7 1/2" D x 2 1/2" W. ANODIZED
2	MATCH MANUFACTURER, PRODUCT LINE, AND FINISH OF PROJECT NO 693-13-111 - REPLACE EXTERIOR WINDOWS.
3	BOD: KAWNEER TRIFAB 400, 4" D x 1 3/4" W. ANODIZED
4	BOD: MATCH EXISTING NORTH WINDOW FRAMES



Number	Revisions	Date
0	100% CONSTRUCTION DOCUMENTS	04/18/2023
A1	ADDENDUM 1	06/28/2024

**CONSULTANTS:**

**ARCHITECT/ENGINEERS:**

**VALHALLA ENGINEERING GROUP, LLC**

750 W HAMPODEN AVE  
SUITE 300  
ENGLEWOOD, CO 80110  
(720) 550-6307  
WWW.VALHALLAENGINEERING.COM

VEG 19.25

**STAMP:**



Drawing Title  
**WINDOW FRAME TYPES**

Approved: Project Director

Phase  
**100% CONSTRUCTION DOCUMENTS**

Project Title <b>RENOVATE 9TH FLOOR MENTAL HEALTH</b>	Project Number <b>693-19-106</b>
Location 1111 EAST END BLVD, WILKES-BARRE, PA 18711	Building Number <b>01 &amp; 17</b>
Issue Date <b>04/18/2023</b>	Checked <b>DR</b>
Drawn <b>ZAM</b>	Drawing Number <b>01-A47</b>
DWG 46 of 53	

FINAL DRAWINGS SUBMITTAL

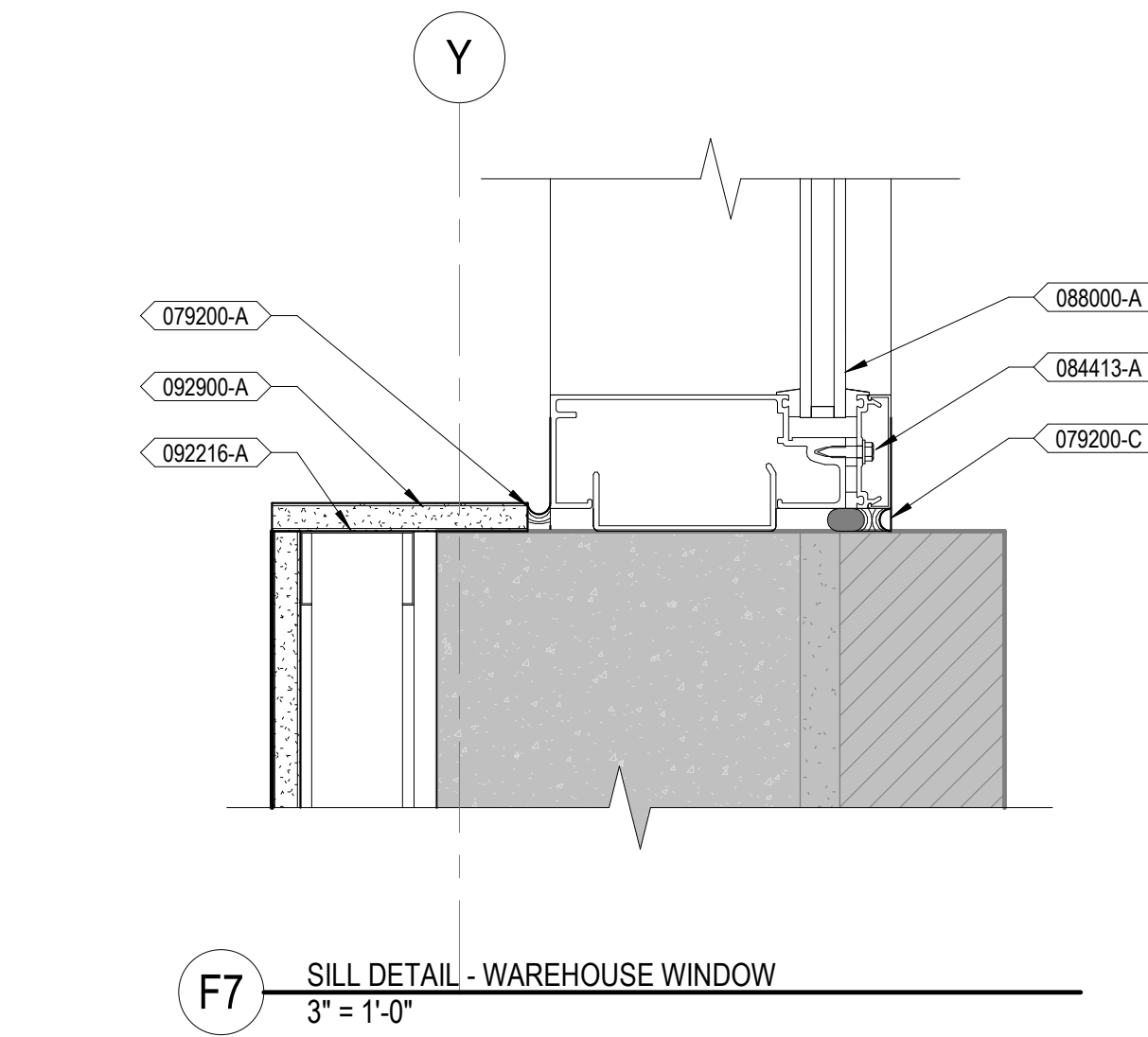
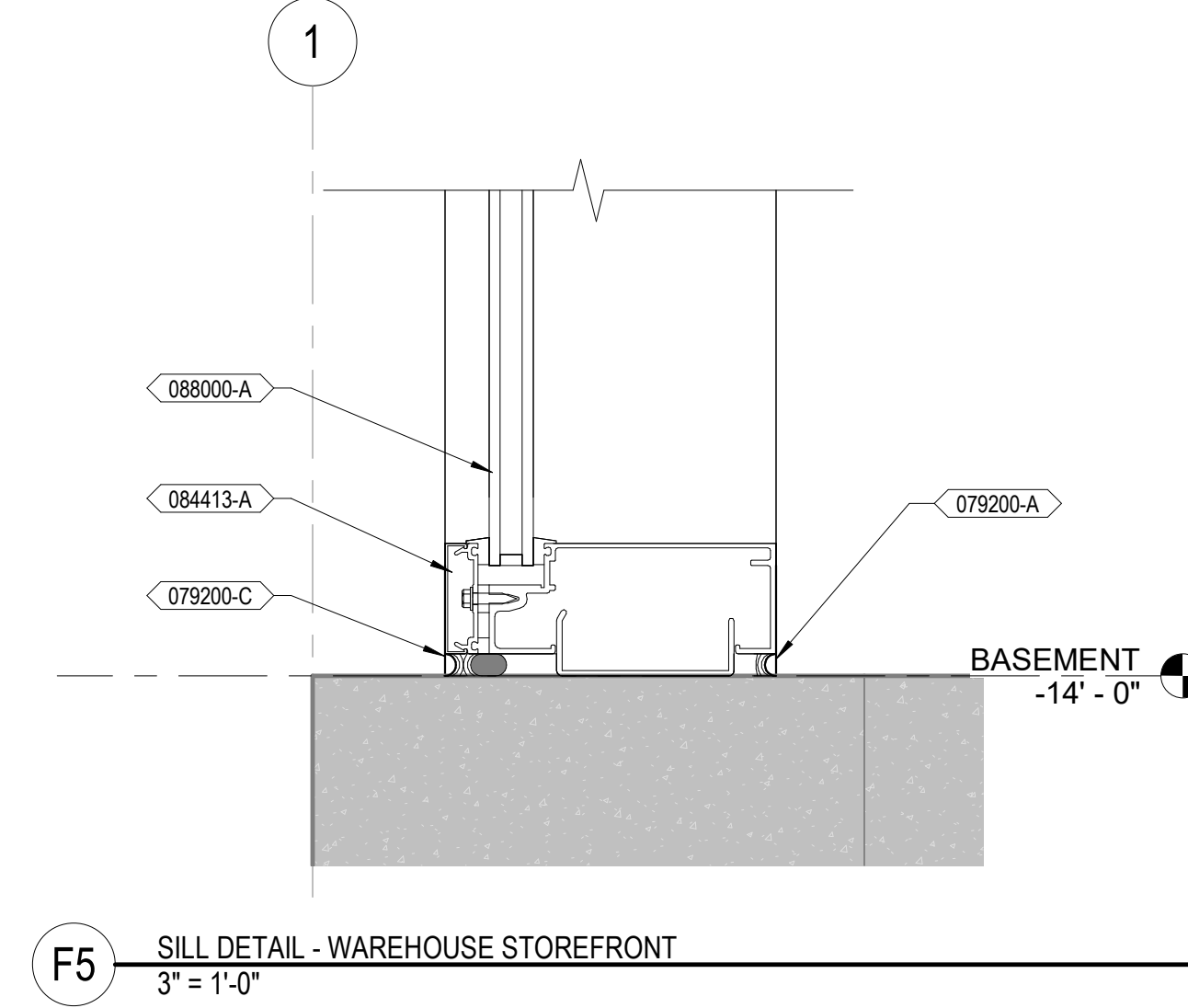
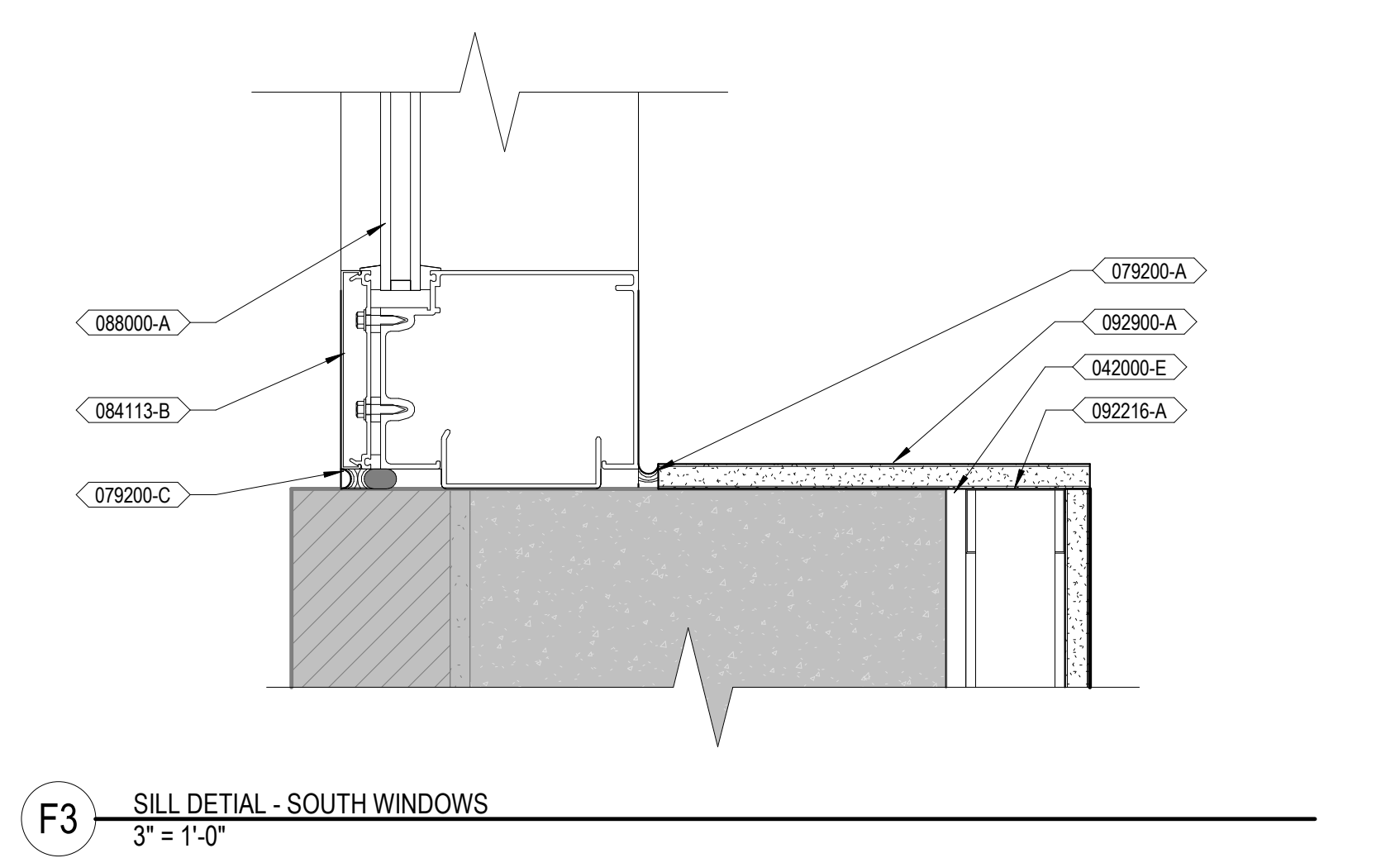
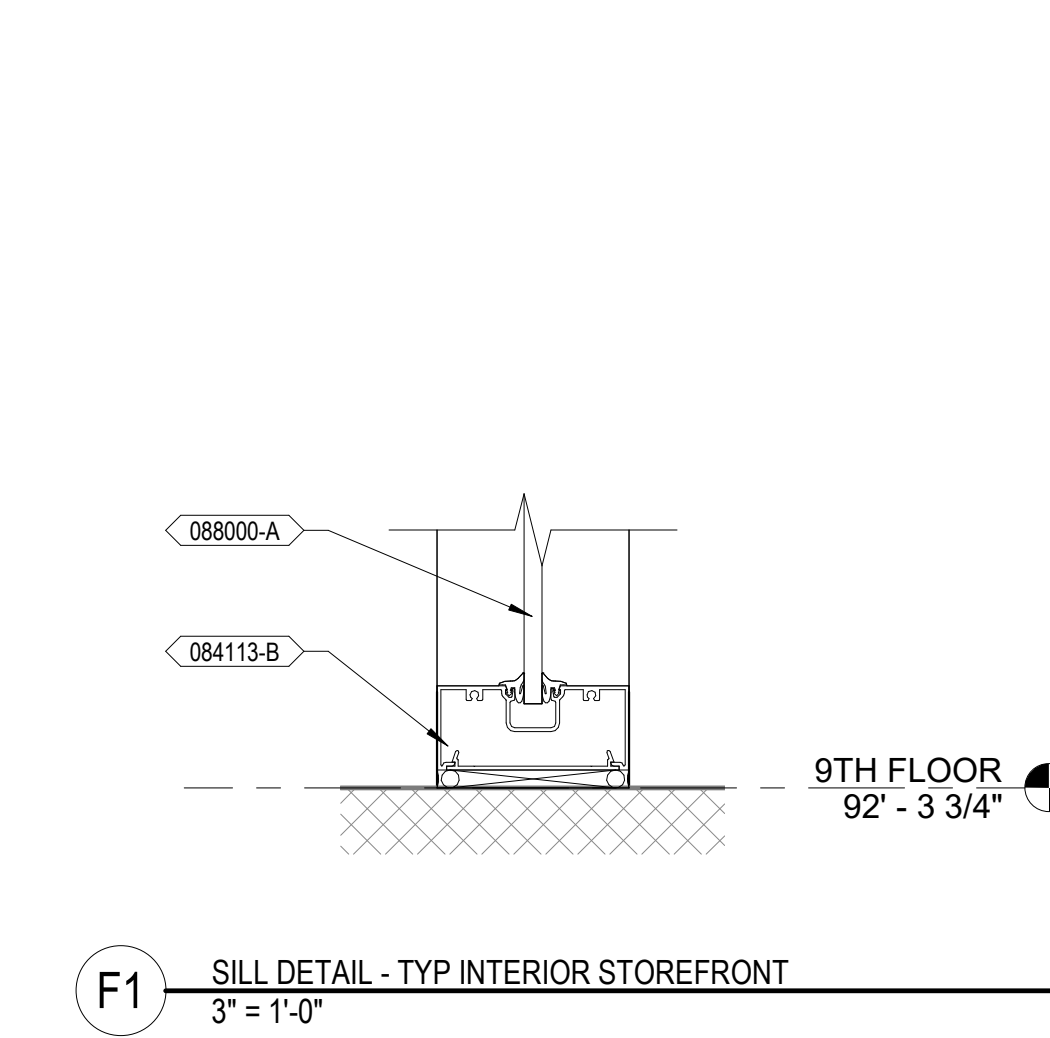
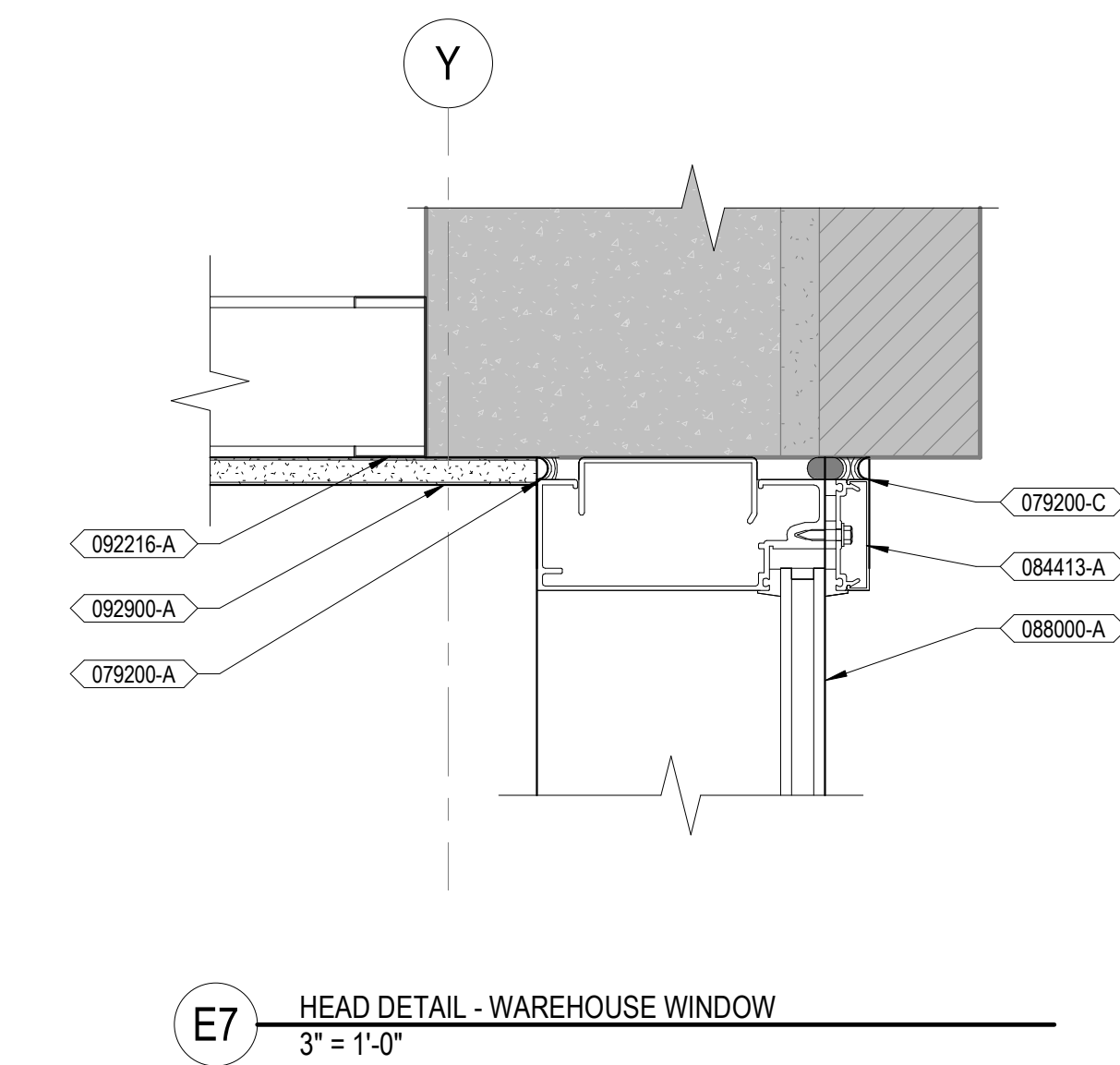
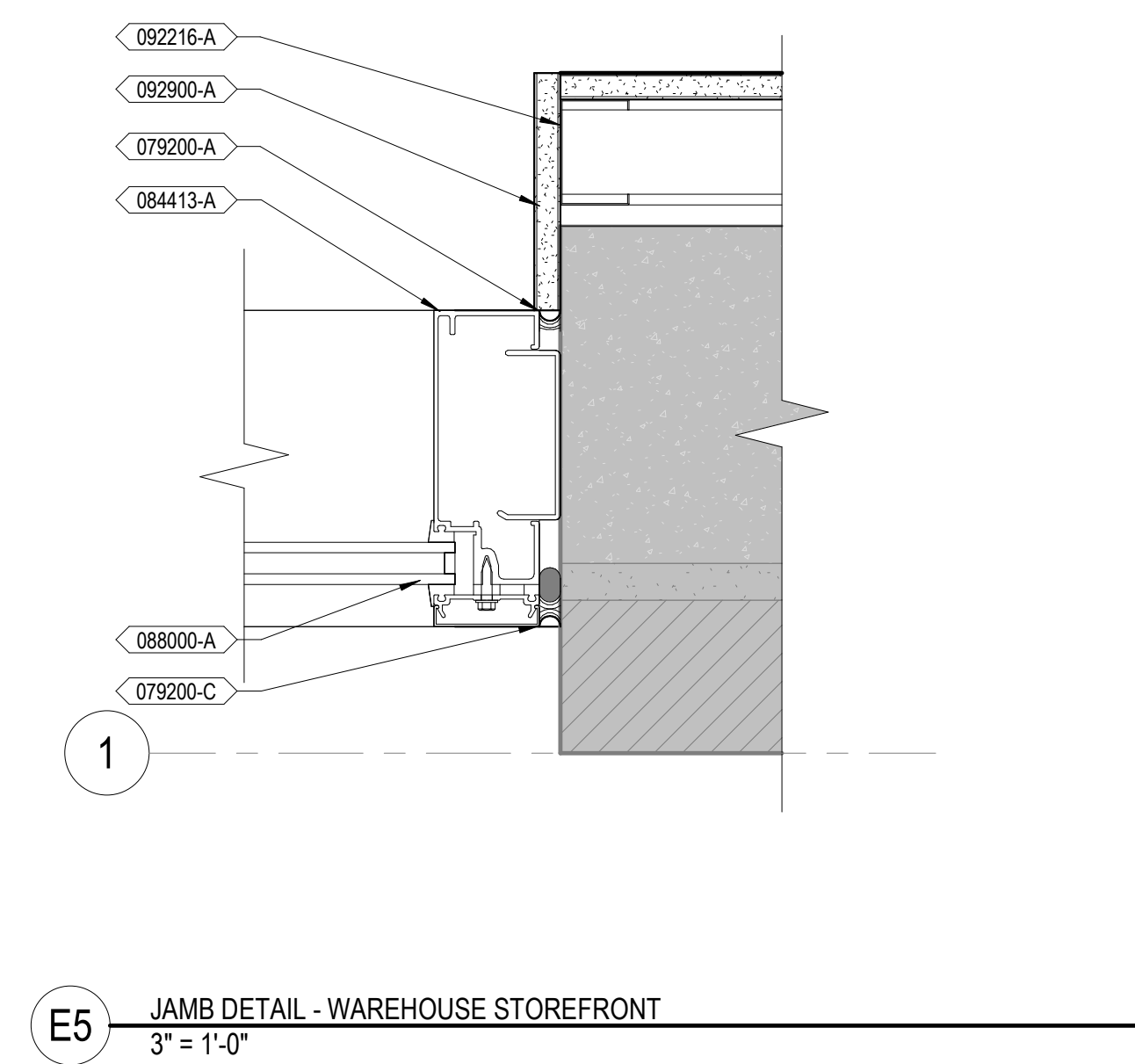
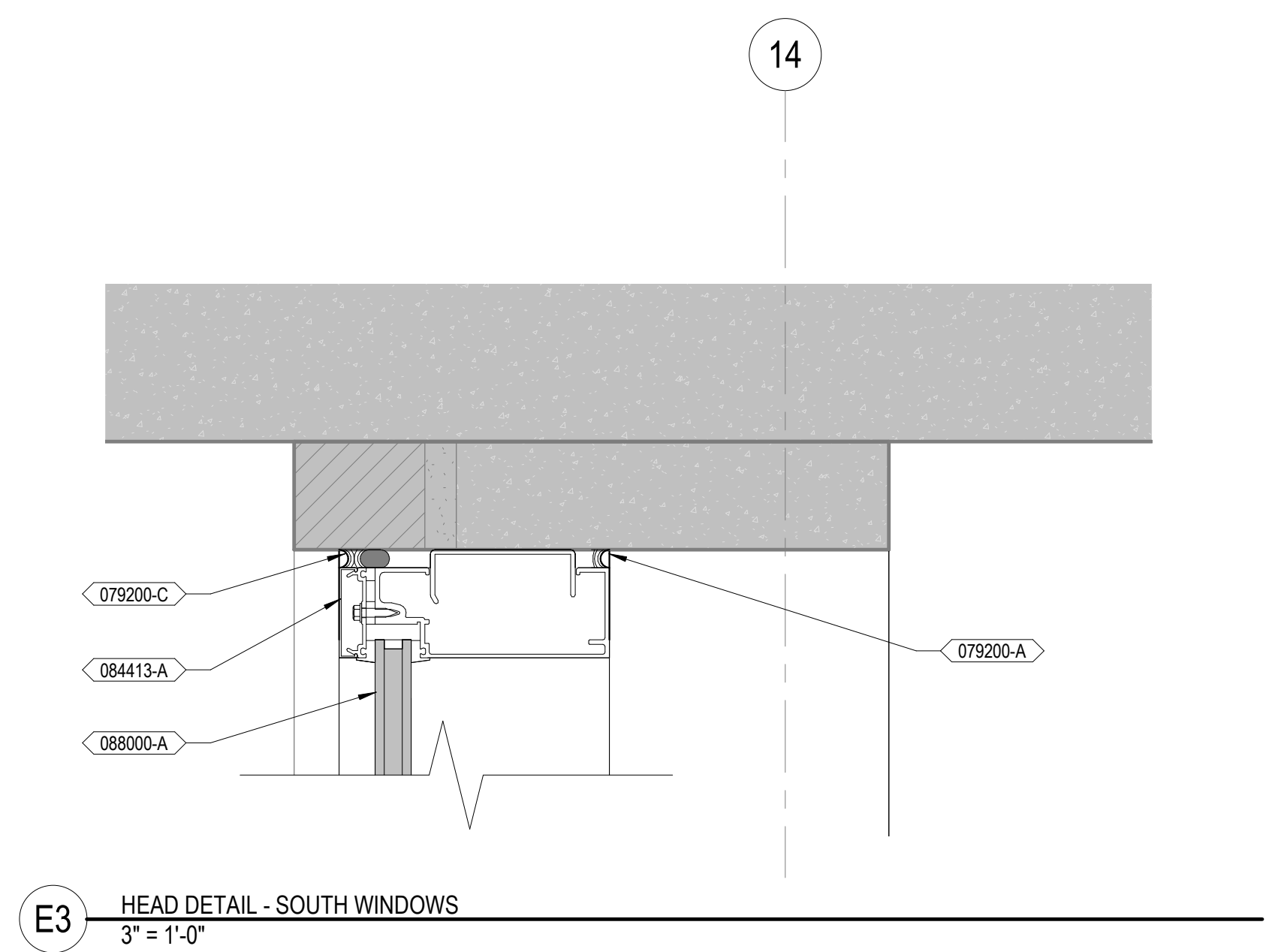
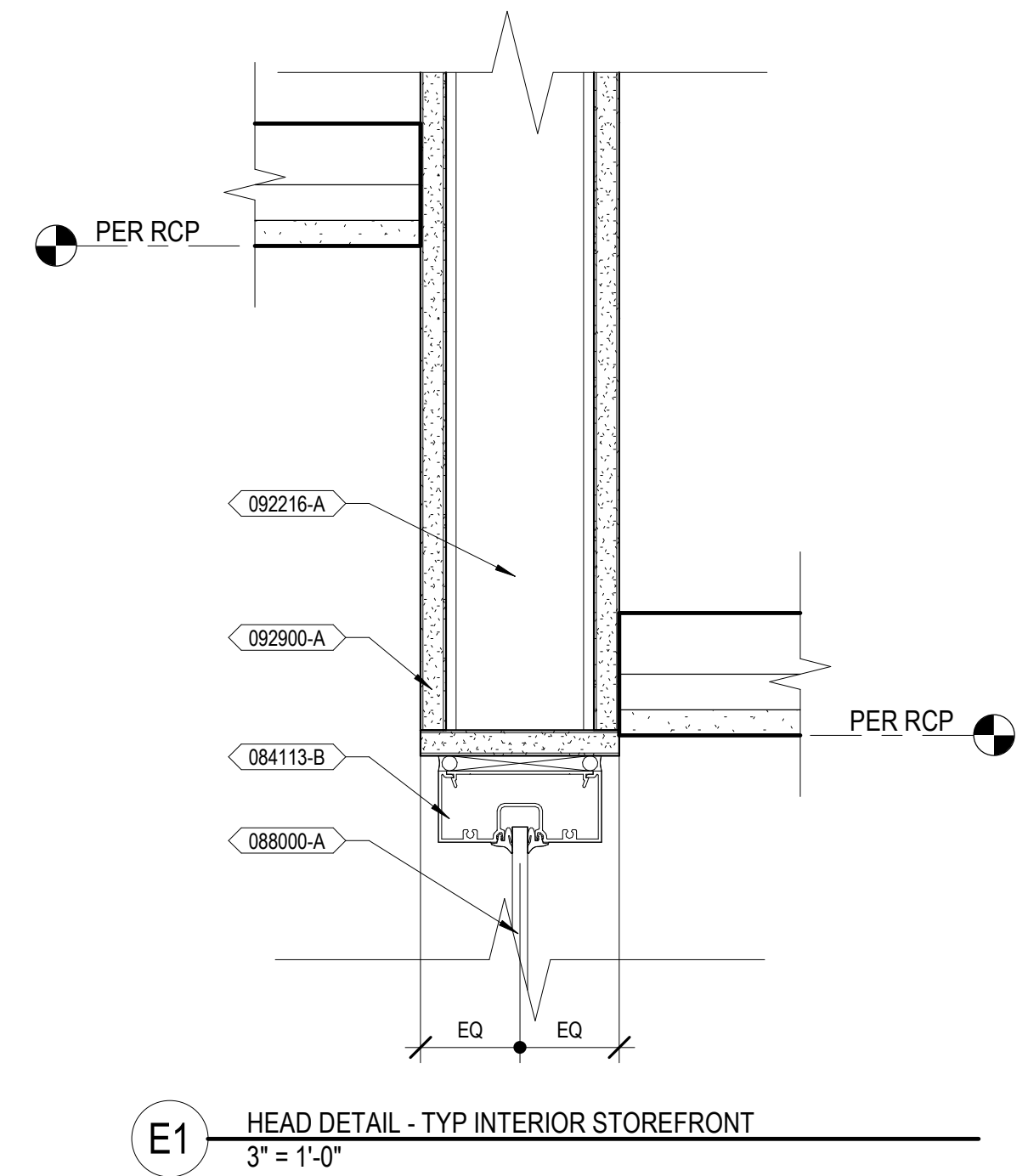
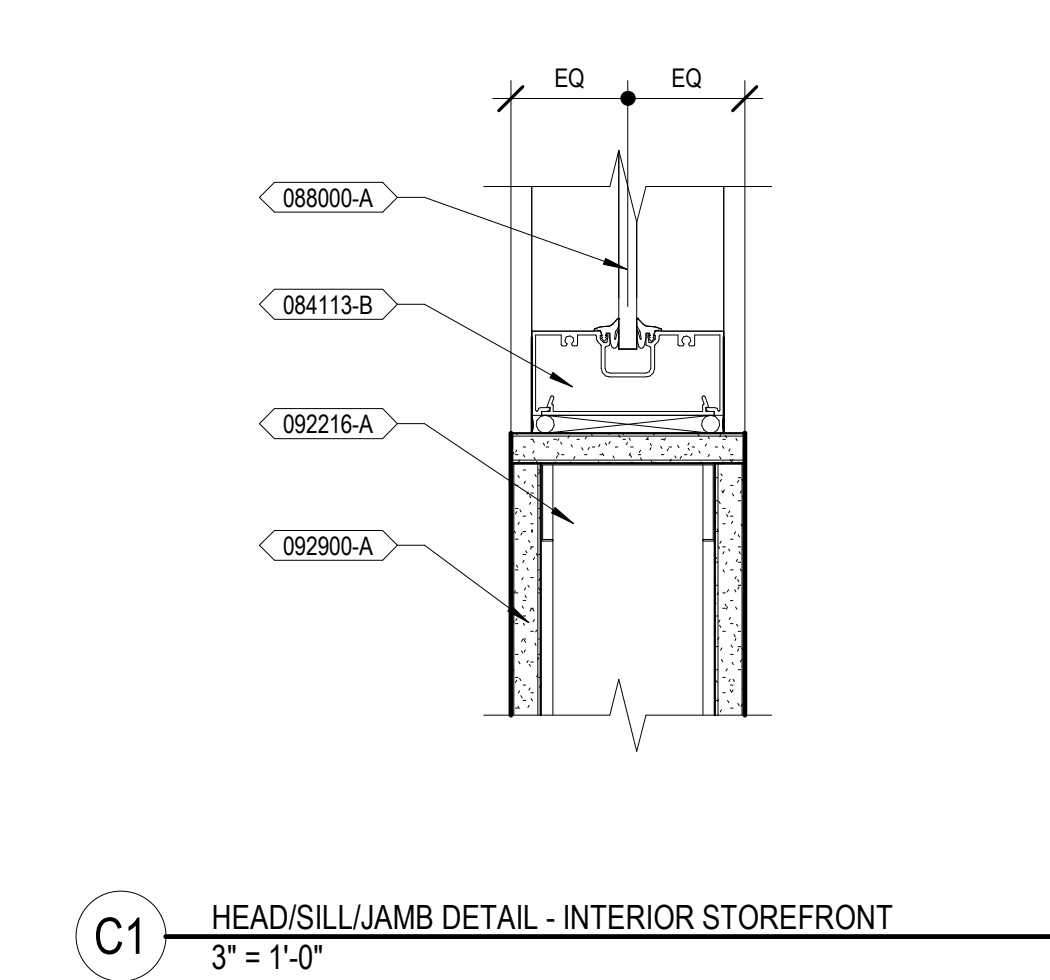
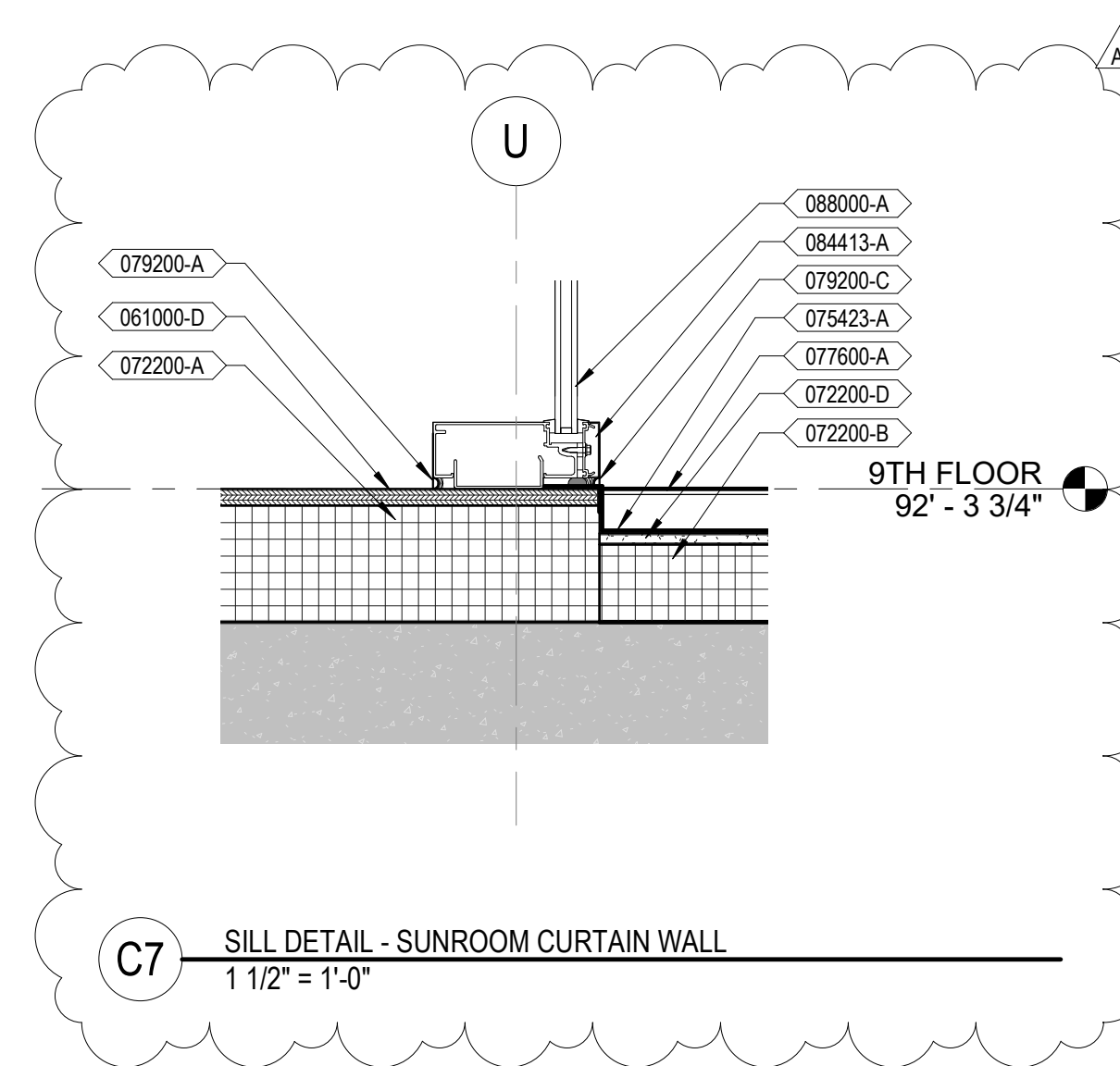
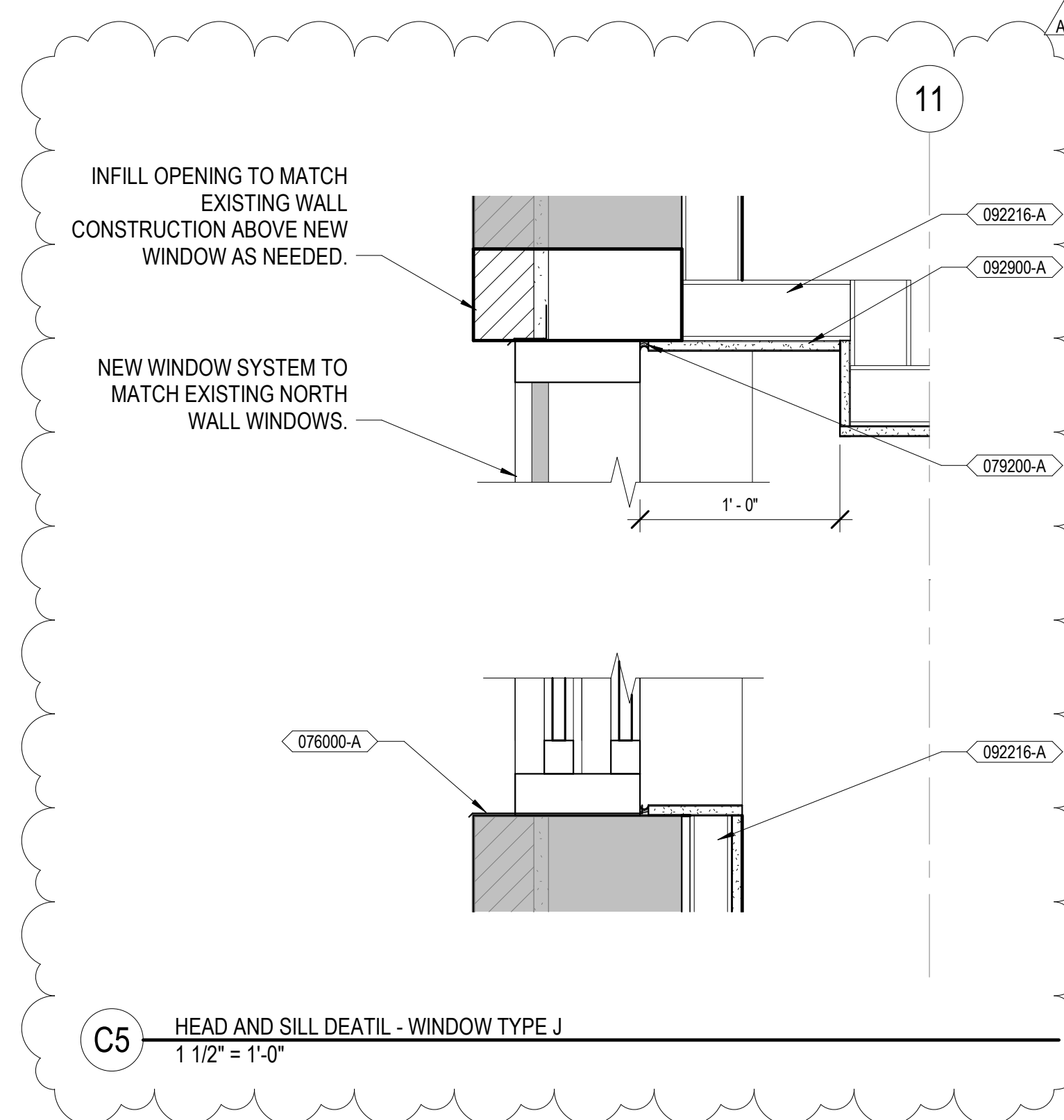


**GENERAL NOTES**

- A. REFER TO SHEET 01-13 AND 01-A1 FOR ADDITIONAL GENERAL NOTES THAT ARE APPLICABLE.
- B. EXTERIOR WINDOW PROFILES FOR SOUTH AND WEST ELEVATIONS ARE REPRESENTATIVE OF INFORMATION FROM DRAWINGS PROVIDED TO VALHALLA FROM VHA COR ON 02/10/2020 FROM VHA PROJECT #693-13-111. WINDOW SIZES HAVE BEEN MODIFIED TO MATCH EXISTING OPENINGS AS UNDERSTOOD BY VALHALLA AND ARE TO BE VERIFIED IN FIELD.

**KEYNOTES**

- 042000-E AIR GAP
- 061000-D PLYWOOD SHEATHING
- 072200-A RIGID ROOF INSULATION
- 072200-B TAPERED ROOF INSULATION
- 072200-D GLASS MAT, WATER-RESISTANT GYPSUM ROOF BOARD
- 075423-A THERMOPLASTIC POLYOLEFIN (TPO) ROOFING SYSTEM
- 076000-A PREFINISHED SHEET METAL FLASHING
- 077600-A ROOFTOP TURF PAVER SYSTEM
- 079200-A JOINT SEALANT
- 079200-C BACKER ROD AND SEALANT
- 084113-B ALUMINUM-FRAMED STOREFRONT SYSTEM
- 084413-A GLAZED ALUMINUM CURTAIN WALL
- 088000-A GLAZING PER GLAZING SCHEDULE
- 092216-A METAL STUDS, RE WALL TYPE
- 092900-A GYPSUM BOARD



0	100% CONSTRUCTION DOCUMENTS	04/18/2023
A1	ADDENDUM 1	06/28/2024
Number:	Revisions:	Date:

**CONSULTANTS:**

**ARCHITECT/ENGINEERS:**  
  
 VALHALLA ENGINEERING GROUP, LLC  
 750 W HAMPTON AVE SUITE 300  
 ENGLEWOOD, CO 80110  
 (720) 590-6307  
 WWW.VALHALLAENGINEERING.COM  
 VEG 19.25

**STAMP:**



Drawing Title  
**WINDOW DETAILS**  
 Approved: Project Director

Phase  
**100% CONSTRUCTION DOCUMENTS**

Project Title RENOVATE 9TH FLOOR MENTAL HEALTH	Project Number 693-19-106
Location 1111 EAST END BLVD, WILKES-BARRE, PA 18711	Building Number 01 & 17
Issue Date 04/18/2023	Drawn ZAM
Checked DR	DWG 47 of 53

FINAL DRAWINGS SUBMITTAL



FINISH SCHEDULE - 9TH FLOOR										
ROOM NUMBER	ROOM NAME	FLOORS				WALLS			CEILING	WALL PROTECTION
		FLOOR	BASE	NORTH	EAST	SOUTH	WEST			
C9-00	COURTYARD	PVR-1/TRF-1	-	-	-	-	-	OPEN		
C9-01	EAST SUNROOM	WSF-1/WSF-2	RB-1	-	-	-	EXIST	PNT-C1		
C9-02	HAC	RES-6A	RCB-1	PNT-SC1	PNT-SC1	PNT-SC1	PNT-SC1	ACT-SP	RWC-1	
C9-03	GROUP COUNSELING ROOM	WSF-2	RB-1	PNT-1	PNT-1	PNT-1	PNT-1	PNT-C1		
C9-04	MENS	WSF-2	WSF-2	PNT-2	PNT-2	PNT-2	PNT-3	PNT-C1		
C9-04A	TOILET	PT-1	PT-1	WP-1	WP-1	WP-1	WP-1	PNT-SC2		
C9-05	TOILET	PT-2	PT-2	PT-2/PT-3/ PNT-SC1	PT-2/PT-3/ PNT-SC1	PT-2/PT-3/ PNT-SC1	PT-2/PT-3/ PNT-SC1	PNT-C1		
C9-06	MECHANICAL	EXIST	EXIST	EXIST	EXIST	EXIST	EXIST	EXIST		
C9-06A	ELEC	EXIST	EXIST	EXIST	EXIST	EXIST	EXIST	EXIST		
C9-07	OFFICE	WSF-2	RB-1	PNT-2	PNT-3	PNT-2	PNT-2	ACT-1		
C9-08	MENS BARIATRIC	WSF-2	WSF-2	PNT-2	PNT-2	PNT-2	PNT-3	PNT-C1		
C9-08A	TOILET	PT-1	PT-1	WP-1	WP-1	WP-1	WP-1	PNT-SC2		
C9-09	ELEC	EXIST	EXIST	EXIST	EXIST	EXIST	EXIST	EXIST		
C9-10	LAUNDRY	RES-6A	RCB-1	PNT-2	PNT-2	PNT-2	PNT-2	PNT-C1	RWC-1	
C9-11	QUIET ROOM	HSF-1	HSF-1	PNT-1	PNT-1	PNT-1	PNT-1	PNT-C1		
C9-12	MENS	WSF-2	WSF-2	PNT-2	PNT-3	PNT-2	PNT-2	PNT-C1		
C9-12A	TOILET	PT-1	PT-1	WP-1	WP-1	WP-1	WP-1	PNT-SC2		
C9-13	SOILED UTILITY	RES-6A	RCB-1	PNT-SC1	PNT-SC1	PNT-SC1	PNT-SC1	ACT-SP	RWC-1	
C9-14	MENS	WSF-2	WSF-2	PNT-2	PNT-2	PNT-2	PNT-3	PNT-C1		
C9-14A	TOILET	PT-1	PT-1	WP-1	WP-1	WP-1	WP-1	PNT-SC2		
C9-15	MENS BARIATRIC	WSF-2	WSF-2	PNT-2	PNT-2	PNT-2	PNT-3	PNT-C1		
C9-15A	TOILET	PT-1	PT-1	WP-1	WP-1	WP-1	WP-1	PNT-SC2		
C9-16	DINING/ ACTIVITIES	WSF-2	RB-1	PNT-1/ PNT-4	PNT-1/ PNT-4	PNT-1/ PNT-4	RWC-5	PNT-C1	RWC-2, CG-2	
C9-17	GROUP THERAPY	WSF-2	RB-1	PNT-1	PNT-1	PNT-1	PNT-1	PNT-C1		
C9-18	MENS	WSF-2	WSF-2	PNT-2	PNT-3	PNT-2	PNT-2	PNT-C1		
C9-18A	TOILET	PT-1	PT-1	WP-1	WP-1	WP-1	WP-1	PNT-SC2		
C9-19	ELEC	EXIST	EXIST	EXIST	EXIST	EXIST	EXIST	EXIST		
C9-20	MENS	WSF-2	WSF-2	PNT-2	PNT-2	PNT-2	PNT-3	PNT-C1		
C9-20A	TOILET	PT-1	PT-1	WP-1	WP-1	WP-1	WP-1	PNT-SC2		
C9-21	SALLY PORT	RES-6A	RCB-1	PNT-1	PNT-1	PNT-1	PNT-1	PNT-C1	CG-1, RWC-1	
C9-22	SERVING KITCHEN	RES-6A	RCB-1	PNT-2	PNT-2	PNT-2	PNT-2	ACT-1	RWC-1	
C9-23	ELEVATOR LOBBY	RES-6A	RCB-1	PNT-1	PNT-1	PNT-1	PNT-1	ACT-1	CG-1, RWC-1	
C9-24	MENS	WSF-2	WSF-2	PNT-2	PNT-3	PNT-2	PNT-2	PNT-C1		
C9-24A	TOILET	PT-1	PT-1	WP-1	WP-1	WP-1	WP-1	PNT-SC2		
C9-25	ANTE ROOM	WSF-2	RB-1	PNT-2	PNT-2	PNT-2	PNT-2	PNT-C1		
C9-25A	TOILET	PT-1	PT-1	WP-1	WP-1	WP-1	WP-1	PNT-SC2		
C9-25B	SECLUSION ROOM	HSF-1	HSF-1	RES-W1	RES-W1	RES-W1	RES-W1	PNT-C1		
C9-26	LOBBY	WSF-1/WSF-2	RB-1	PNT-5	PNT-5	PNT-5	PNT-5	PNT-C2/ PNT-C3	RWC-2, CG-2	
C9-27	NURSE'S STATION	WSF-1	RB-2	PNT-1	PNT-1	PNT-1	PNT-1	ACT-1 & PNT-C2		
C9-27A	NURSE'S WORKROOM	WSF-1	RB-2	PNT-1	PNT-1	PNT-1	PNT-1	ACT-1		
C9-28	SALLY PORT	WSF-2	RB-1	PNT-1	PNT-1	PNT-1	PNT-1	PNT-C2	RWC-1	
C9-29	INTERVIEW	WSF-2	RB-1	PNT-2	PNT-2	PNT-2	PNT-1	PNT-C1		
C9-30	ELEVATOR LOBBY	WSF-1/WSF-2	RB-1	PNT-1	PNT-1	PNT-1	PNT-1	ACT-1 & PNT-C2	CG-1, RWC-1	
C9-31	TELECOM ROOM	N/A	RB-1	PNT-2	PNT-2	PNT-2	PNT-2	OPEN		
C9-32	MECHANICAL	N/A	RB-1	PNT-2	PNT-2	PNT-2	PNT-2	OPEN		
C9-33	STAFF TOILET	PT-2	PT-2	PT-2/PT-3/ PNT-SC1	PT-2/PT-3/ PNT-SC1	PT-2/PT-3/ PNT-SC1	PT-2/PT-3/ PNT-SC1	PNT-SC2		
C9-34	ELEC	EXIST	EXIST	EXIST	EXIST	EXIST	EXIST	EXIST		
C9-34A	ELEC	EXIST	EXIST	EXIST	EXIST	EXIST	EXIST	EXIST		
C9-35	NURSE'S LOUNGE	LVT-1	RB-2	PNT-1	PNT-1	PNT-1	PNT-3	ACT-1 & PNT-C1		
C9-35A	LOCKERS	LVT-1	RB-2	PNT-1	PNT-1	PNT-1	PNT-1	ACT-1		
C9-35B	CLOSET	LVT-1	RB-2	PNT-2	PNT-2	PNT-2	PNT-2	PNT-C1		
C9-36	MECH	EXIST	EXIST	EXIST	EXIST	EXIST	EXIST	EXIST		
C9-37	TEAMING/ COUNSELING	WSF-2	RB-1	PNT-1	PNT-1	PNT-1	PNT-5	PNT-C1		
C9-38	EXAM/ INTAKE	WSF-2	WSF-2	PNT-1	PNT-1	PNT-1	-	PNT-C1		
C9-39	HEAD NURSE OFFICE	WSF-1	RB-2	PNT-3	PNT-2	PNT-2	PNT-2	ACT-1		
C9-40	MED	WSF-2	RB-1	PNT-2	PNT-2	PNT-2	PNT-2	ACT-1		
C9-41	WOMEN'S	WSF-2	WSF-2	PNT-2	PNT-3	PNT-2	PNT-2	PNT-C1		
C9-41A	TOILET	PT-1	PT-1	WP-1	WP-1	WP-1	WP-1	PNT-SC2		
C9-42	STAFF TOILET	PT-2	PT-2	PT-2/PT-3/ PNT-SC1	PT-2/PT-3/ PNT-SC1	PT-2/PT-3/ PNT-SC1	PT-2/PT-3/ PNT-SC1	PNT-SC2		
C9-43	WOMEN'S	WSF-2	WSF-2	PNT-2	PNT-2	PNT-2	PNT-3	PNT-C1		
C9-43A	TOILET	PT-1	PT-1	WP-1	WP-1	WP-1	WP-1	PNT-SC2		
C9-44	WOMEN'S	WSF-2	WSF-2	PNT-2	PNT-2	PNT-2	PNT-3	PNT-C1		
C9-44A	TOILET	PT-1	PT-1	WP-1	WP-1	WP-1	WP-1	PNT-SC2		
C9-45	PATIENT STORAGE	RES-6A	RCB-1	PNT-2	PNT-2	PNT-2	PNT-2	PNT-C1		
C9-46	LINEN	RES-6A	RCB-1	PNT-SC1	PNT-SC1	PNT-SC1	PNT-SC1	PNT-SC2		
C9-47	OFFICE/ GROUP ROOM	WSF-2	RB-1	PNT-2	PNT-2	PNT-2	PNT-2	PNT-C1		
C9-47A	STORAGE	WSF-2	RB-1	PNT-1	PNT-1	PNT-1	PNT-1	PNT-C1		
C9-48	LAUNDRY	RES-6A	RCB-1	PNT-2	PNT-2	PNT-2	PNT-2	PNT-C1	RWC-1	
C9-49	WOMEN'S BARIATRIC	WSF-2	WSF-2	PNT-2	PNT-2	PNT-2	PNT-3	PNT-C1		
C9-49A	TOILET	PT-1	PT-1	WP-1	WP-1	WP-1	WP-1	PNT-SC2		
C9-50	MEETING	WSF-2	RB-1	PNT-2	PNT-2	PNT-2	PNT-2	PNT-C1		
C9-51	HAC	RES-6A	RCB-1	PNT-SC1	PNT-SC1	PT-2/PNT-2	PNT-SC1	ACT-SP	RWC-1	
C9-52	SALLY PORT	WSF-1	RB-2	PNT-1	PNT-1	PNT-1	PNT-1	PNT-C1	RWC-1	
C9-53	ELEC	EXIST	EXIST	EXIST	EXIST	EXIST	EXIST	EXIST		
C9-54	ELEVATOR LOBBY	WSF-1/WSF-2	RB-1	PNT-1	PNT-1	PNT-1	PNT-1	ACT-1 & PNT-C2	CG-1, RWC-1	
C9-55	MECHANICAL	EXIST	EXIST	EXIST	EXIST	EXIST	EXIST	EXIST		
C9-56	CLEAN STORAGE	RES-6A	RCB-1	PNT-SC1	PNT-SC1	PNT-SC1	PNT-SC1	ACT-SP		
C9-57	HAC	RES-6A	RCB-1	PNT-SC1	PNT-SC1	PNT-SC1	PNT-SC1	ACT-SP	RWC-1	
C9-58	ELECTRICAL	EXIST	EXIST	EXIST	EXIST	EXIST	EXIST	EXIST		
C9-59	PREFUNCTION/ COLLABORATION	LVT-1	RB-2	PNT-1	PNT-1	PNT-1	PNT-1	ACT-1 & PNT-C1		
C9-60	CONFERENCE	LVT-1	RB-2	PNT-1	PNT-1	PNT-1	PNT-4	ACT-1		
C9-61	WORKSTATIONS	LVT-1	RB-2	PNT-1	PNT-1	PNT-1	PNT-1	ACT-1		
C9-62	ELEC	EXIST	EXIST	EXIST	EXIST	EXIST	EXIST	EXIST		
C9-63	ELEC	EXIST	EXIST	EXIST	EXIST	EXIST	EXIST	EXIST		
C9-64	NURSE'S STATION	WSF-1	RB-2	PNT-1	RWC-2	PNT-1	PNT-1	ACT-1 & PNT-C2		
C9-65	MED	WSF-1	RB-2	PNT-2	PNT-2	PNT-2	PNT-2	ACT-1		
C9-66	GERIATRIC	WSF-2	WSF-2	PNT-2	PNT-3	PNT-2	PNT-2	PNT-C1		
C9-66A	TOILET	PT-1	PT-1	WP-1	WP-1	WP-1	WP-1	PNT-SC2		
C9-67	BARIATRIC GERIATRIC	WSF-2	WSF-2	PNT-2	PNT-2	PNT-2	PNT-3	PNT-C1		
C9-67A	TOILET	PT-1	PT-1	WP-1	WP-1	WP-1	WP-1	PNT-SC2		
C9-68	BARIATRIC GERIATRIC	WSF-2	WSF-2	PNT-2	PNT-2	PNT-2	PNT-3	PNT-C1		
C9-68A	TOILET	PT-1	PT-1	WP-1	WP-1	WP-1	WP-1	PNT-SC2		
C9-69	OFFICE	WSF-2	RB-1	PNT-2	PNT-3	PNT-2	PNT-2	PNT-C1		
C9-70	CLEAN UTILITY	RES-6A	RCB-1	PNT-SC1	PNT-SC1	PNT-SC1	PNT-SC1	PNT-SC2		
C9-71	GROUP THERAPY	WSF-2	RB-1	PNT-1	PNT-1	PNT-1	PNT-1	PNT-C1		
C9-72	DAY/TV	WSF-2	RB-1	PNT-1	PNT-1	PNT-1	PNT-1	PNT-C1		

FINISH SCHEDULE - 9TH FLOOR										
ROOM NUMBER	ROOM NAME	FLOORS				WALLS			CEILING	WALL PROTECTION
		FLOOR	BASE	NORTH	EAST	SOUTH	WEST			
C9-72A	GERIATRIC DINING	WSF-2	RB-1	PNT-1	PNT-1	PNT-1	PNT-1	PNT-C1		
C9-001	CORRIDOR	WSF-1/WSF-2	RB-1	RE ELEVATIONS	PNT-1/ RWC-3	RE ELEVATIONS	PNT-1	PNT-C1/ PNT-C2	HR-1, CG-1, ECG-1, RE ELEVATIONS	
C9-002	CORRIDOR	WSF-2	RB-1	PNT-1	PNT-1	PNT-1	PNT-1	PNT-C1	RWC-1	
C9-003	CORRIDOR	WSF-1/WSF-2	RB-1	RE ELEVATIONS	PNT-1	RE ELEVATIONS	RWC-3	PNT-C1/ PNT-C2/ PNT-C3	HR-1, CG-1, ECG-1, RE ELEVATIONS	
C9-004	CORRIDOR	WSF-2	RB-1	PNT-1	PNT-1	PNT-1	PNT-1	PNT-C2	CG-1, RWC-1	
C9-005	CORRIDOR	WSF-1	RB-2	PNT-1	PNT-1	PNT-5	PNT-1	ACT-1		
C9-006	CORRIDOR	WSF-1/WSF-2	RB-1	RE ELEVATIONS	PNT-1/RWC-3	RE ELEVATIONS	PNT-1	PNT-C1/ PNT-C2/ PNT-C3	HR-1, CG-1, ECG-1, RE ELEVATIONS	
C9-007	CORRIDOR	WSF-2	RB-1	PNT-1	PNT-1	PNT-1	PNT-1	PNT-C2	RWC-1	
C9-008	CORRIDOR	WSF-1/WSF-2	RB-1	RE ELEVATIONS	RWC-3	RE ELEVATIONS	PNT-1	PNT-C2/ PNT-C3	HR-1, CG-1, ECG-1, RE ELEVATIONS	
C9-009	CORRIDOR	WSF-1/WSF-2	RB-1	RE ELEVATIONS	PNT-1	RE ELEVATIONS	PNT-1/ RWC-3	PNT-C1	HR-1, CG-1, ECG-1, RE ELEVATIONS	

FINISH SCHEDULE - WAREHOUSE													
ROOM NUMBER	ROOM NAME	FLOORS				WALLS			CEILING	WALL PROTECTION			
		FLOOR	BASE	NORTH	EAST	SOUTH	WEST						
L1-001	OXYGEN STORAGE	EXIST	EXIST	EXIST	EXIST	EXIST	EXIST	EXIST					
L1-100	STORAGE	EXIST	RB-3	PNT-2	PNT-2	PNT-2	PNT-2	OPEN					
L1-100A	ELEC	EXIST	RB-3	PNT-2	PNT-2	PNT-2	PNT-2	OPEN					
L1-100E	TELECOM ROOM	EXIST	RB-3	PNT-2	PNT-2	PNT-2	PNT-2	OPEN					
L1-100F	LOCKERS	LVT-1	RB-3	PNT-2	PNT-2	PNT-2	PNT-2	PNT-C1					
L1-100G	TOILET	PT-2	PT-2	PT-2/PT-3/ PNT-SC1	PT-2/PT-3/ PNT-SC1	PT-2/PT-3/ PNT-SC1	PT-2/PT-3/ PNT-SC1	PT-2/PT-3/ PNT-SC1					
L1-100H	OFFICE	LVT-1	RB-3	PNT-2	PNT-2	PNT-2	PNT-2	ACT-1					
L1-100J	LOADING DOCK	EXIST	RB-3	PNT-2	PNT-2	PNT-2	PNT-2	EXIST					
L1-101	STORAGE	CPT-1	EXIST	PNT-2	PNT-2	PNT-2	PNT-2	ACT-1					
L1-102	SECRETARY	CPT-3	RB-3	PNT-2	PNT-2	PNT-2	PNT-3	ACT-1					
L1-102A	CLOSET	CPT-3	RB-3	PNT-2	PNT-2	PNT-2	PNT-2	PNT-C1					
L1-103	OPEN OFFICE	CPT-1/CPT-2	RB-3	PNT-3	PNT-2	PNT-2	PNT-2	ACT-1 & PNT-C1					
L1-104	COPYLOCKERS	CPT-1	RB-3	PNT-2	PNT-2	PNT-2	PNT-2	ACT-1 & PNT-C1					
L1-105	TOILET	PT-2	PT-2	PT-2/PT-3/ PNT-SC1	PT-2/PT-3/ PNT-SC1	PT-2/PT-3/ PNT-SC1	PT-2/PT-3/ PNT-SC1	PT-2/PT-3/ PNT-SC1					
L1-106	TOILET	PT-2	PT-2	PT-2/PT-3/ PNT-SC1	PT-2/PT-3/ PNT-SC1	PT-2/PT-3/ PNT-SC1	PT-2/PT-3/ PNT-SC1	PT-2/PT-3/ PNT-SC1					
L1-107	OFFICE	CPT-1	RB-3	PNT-2	PNT-2	PNT-3	PNT-2	ACT-1					
L1-108	OFFICE	CPT-1	RB-3	PNT-3	PNT-2	PNT-2	PNT-2	ACT-1					
L1-109	OFFICE	CPT-1	RB-3	PNT-2	PNT-2	PNT-3	PNT-2	ACT-1					
L1-110	OFFICE	CPT-1	RB-3	PNT-3	PNT-2	PNT-2	PNT-2	ACT-1					
L1-111	CONFERENCE	CPT-2	RB-3	PNT-3	PNT-2	PNT-2	PNT-2	ACT-1 & PNT-C1					
L1-112	MECH	EXIST	RB-3	PNT-2	PNT-2	PNT-2	PNT-2	OPEN					

FINISH LEGEND					
SYMBOL	MATERIAL	MANUFACTURER	TYPE	COLOR	COMMENTS
ACT-1	ACOUSTIC CEILING TILE	ARMSTRONG	ULTIMA 24 X 24" SQUARE LAY-IN	WHITE	PRELUDE XL 15/16" EXPOSED TEE GRID, WHITE
ACT-SP	ACOUSTIC CEILING TILE - SPECIAL FACED	ARMSTRONG	CALLA HEALTH ZONE 24" X 24" SQUARE LAY-IN	WHITE	
CG-1	CORNER GUARD	ACROVYN	FS-10N	PARCHMENT - #253	PROVIDE AT OUTSIDE CORNERS IN SCHEDULED ROOMS
CG-2	CORNER GUARD	ACROVYN	FS-10N	SMOKEY BLUE - #1576	PROVIDE AT OUTSIDE CORNERS IN SCHEDULED ROOMS AND WHERE INDICATED ON AE640
CG-3	CORNER GUARD	ACROVYN	FS-10N	SMOKEY BLUE - #1576	PROVIDE WHERE INDICATED ON FINISH PLANS
CPT-1	CARPET TILE	MANNINGTON	EXCHANGE 2 - TRANSMIT	CHAT 35648	
CPT-2	CARPET TILE	MANNINGTON	EXCHANGE 2 - TRANSMIT	HAPTICS 13143	