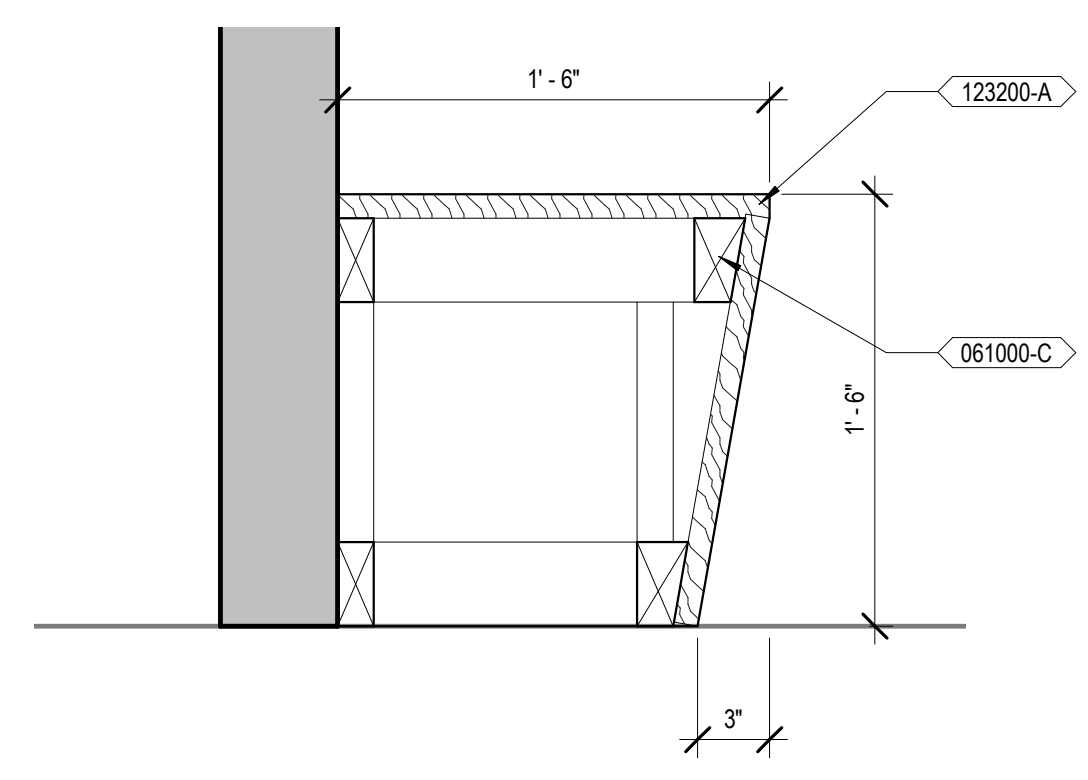


GENERAL NOTES

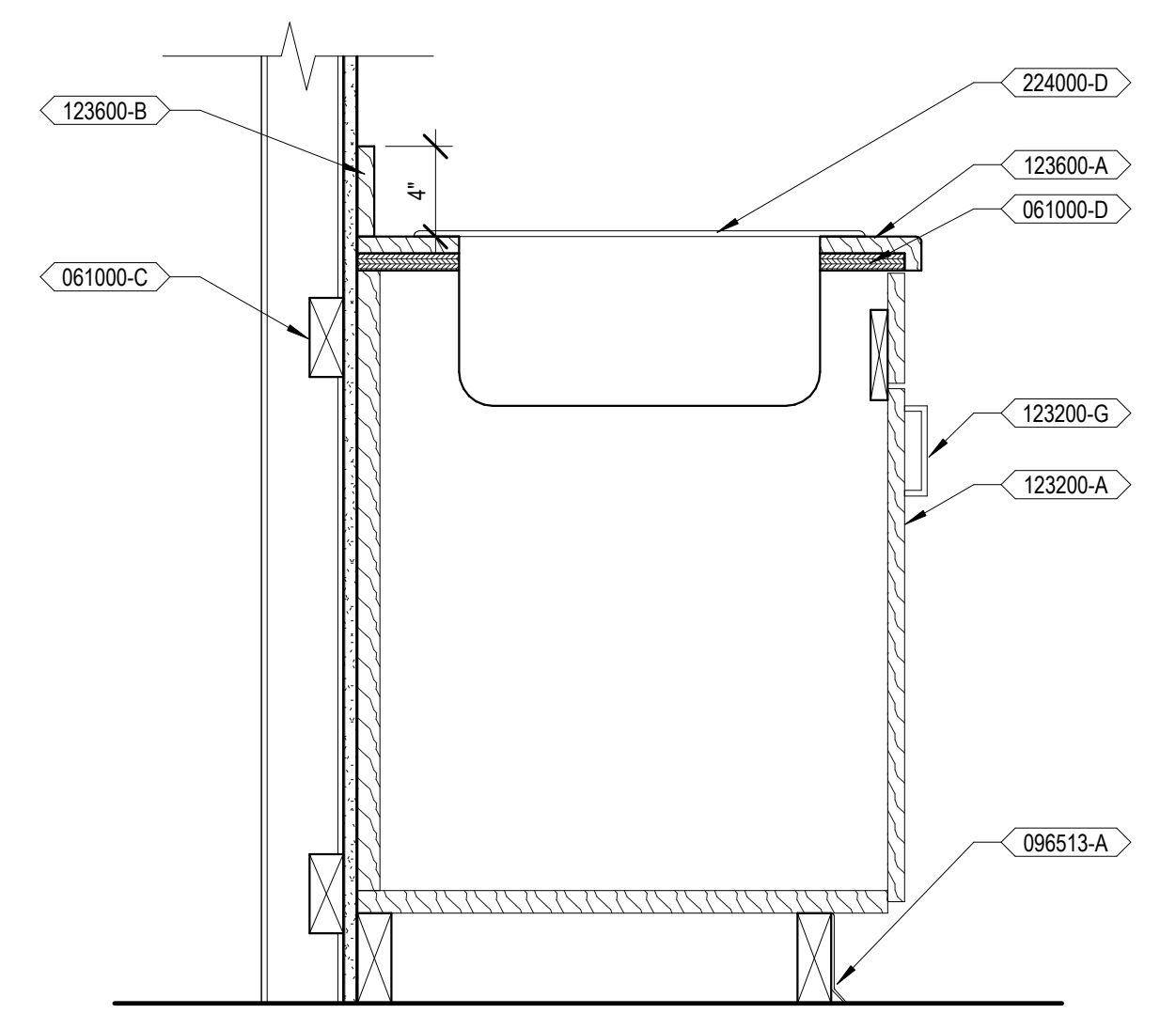
- A. REFER TO FINISH LEGEND AND FINISH SCHEDULE FOR SPECIFIC FINISH INFORMATION.
- B. ALL MILLWORK/ CASEWORK CONSTRUCTION SHALL MEET AWI PREMIUM STANDARDS, UNLESS NOTED OR SPECIFIED OTHERWISE.
- C. ALL EXPOSED MILLWORK/ CASEWORK SURFACES SHALL BE FINISHED W/ PLASTIC LAMINATE TO MATCH ADJACENT PLASTIC LAMINATE SURFACES, UNLESS NOTED OTHERWISE.
- D. ALL CASEWORK INTERIORS SHALL BE WHITE MELAMINE, UNLESS NOTED OTHERWISE.
- E. ALL FILLER PANELS SHALL BE 1-1/2 INCH WIDE MINIMUM, FINISHED TO MATCH ADJACENT FINISH SURFACES, AND SCRIBED TO FIT ADJACENT WALL, UNLESS NOTED OTHERWISE.
- F. ALL BACKSPLASH FINISHES SHALL MATCH COUNTERTOP MATERIAL AND FINISH, UNLESS NOTED OTHERWISE. PLASTIC LAMINATE SIDE/BACKSPLASHES TO HAVE SELF EDGE LAMINATE, UNLESS NOTED OTHERWISE.
- G. CONTRACTOR SHALL APPLY CLEAR MILDEW RESISTANT SILICONE SEALANT WHERE BACKSPLASH MEETS WALL AND COUNTERTOP.
- H. THE UNDERSIDE OF COUNTERTOPS WITH KNEE OPENINGS, MUST HAVE A WHITE MELAMINE FINISH, UNLESS NOTED OTHERWISE.
- I. WATER AND SUPPLY DRAIN PIPES UNDER LAVATORIES AND SINKS SHALL BE INSULATED OR OTHERWISE CONFIGURED TO PROTECT AGAINST CONTACT. THERE SHALL BE NO SHARP OF ABRASIVE SURFACES UNDER LAVATORIES AND SINKS.

KEYNOTES

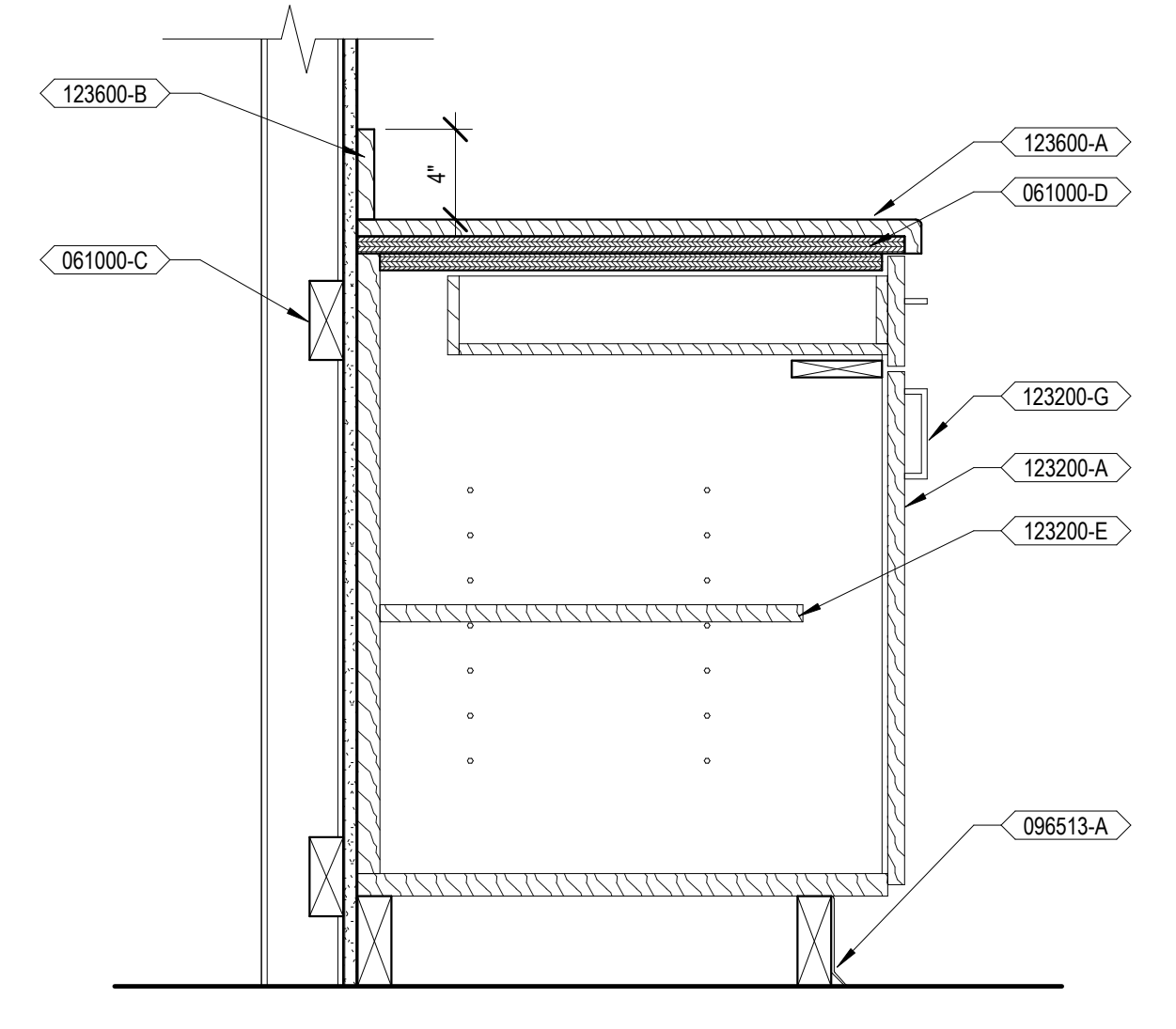
- 061000-C WOOD BLOCKING
- 061000-D PLYWOOD SHEATHING
- 088000-B SECURITY GLAZING
- 092216-A METAL STUDS, RE WALL TYPE
- 092900-A GYPSUM BOARD
- 096513-A RESILIENT BASE, RE FINISH SCHEDULE
- 123200-A PLASTIC LAMINATE CASEWORK
- 123200-E ADJUSTABLE SHELF
- 123200-G WIRE PULL
- 123600-A PLASTIC LAMINATE COUNTERTOP
- 123600-B PLASTIC LAMINATE BACKSPLASH
- 123600-C COUNTER BRACKET
- 224000-D HAND SINK, RE PLUMBING



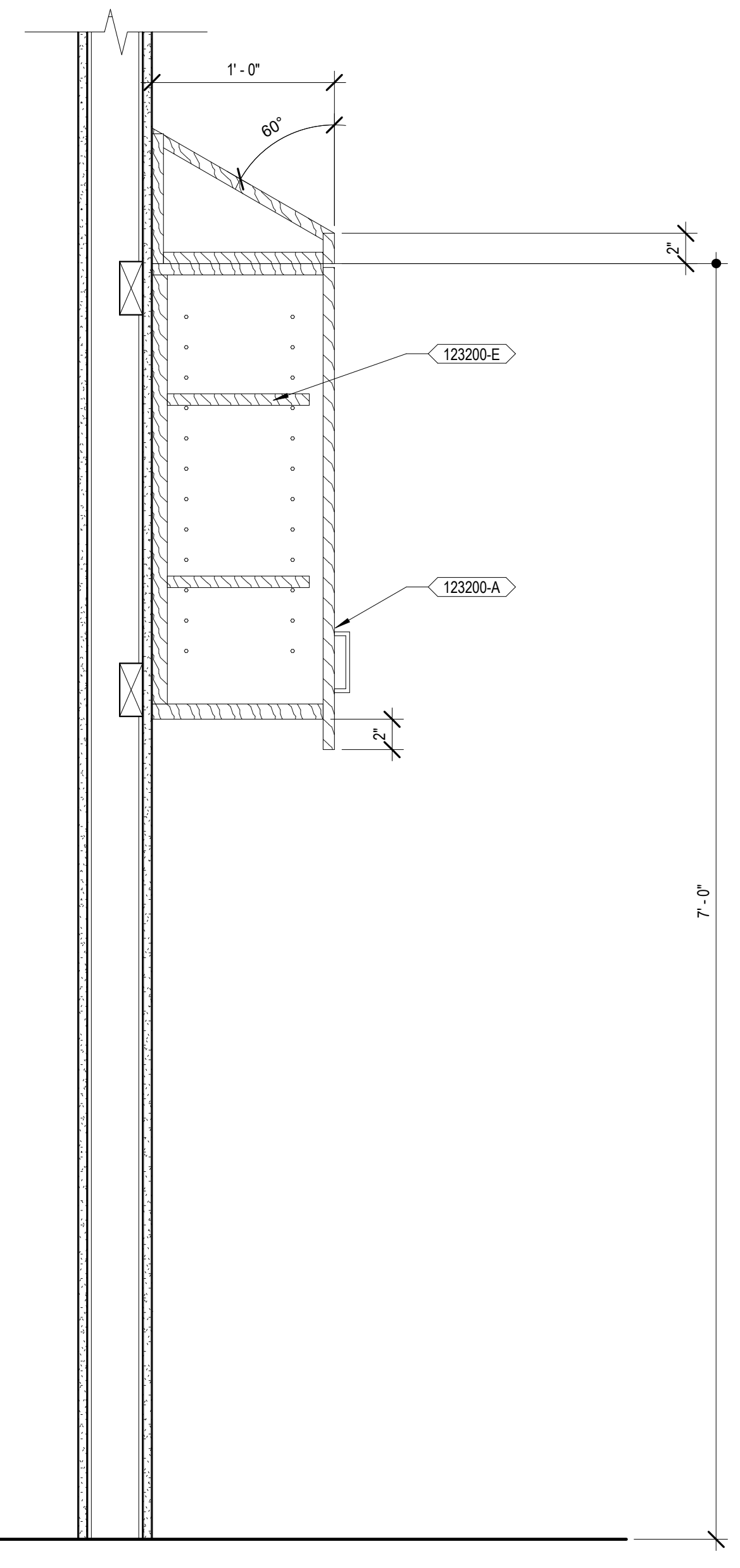
B7 CORRIDOR BENCH DETAIL
1 1/2" = 1'-0"



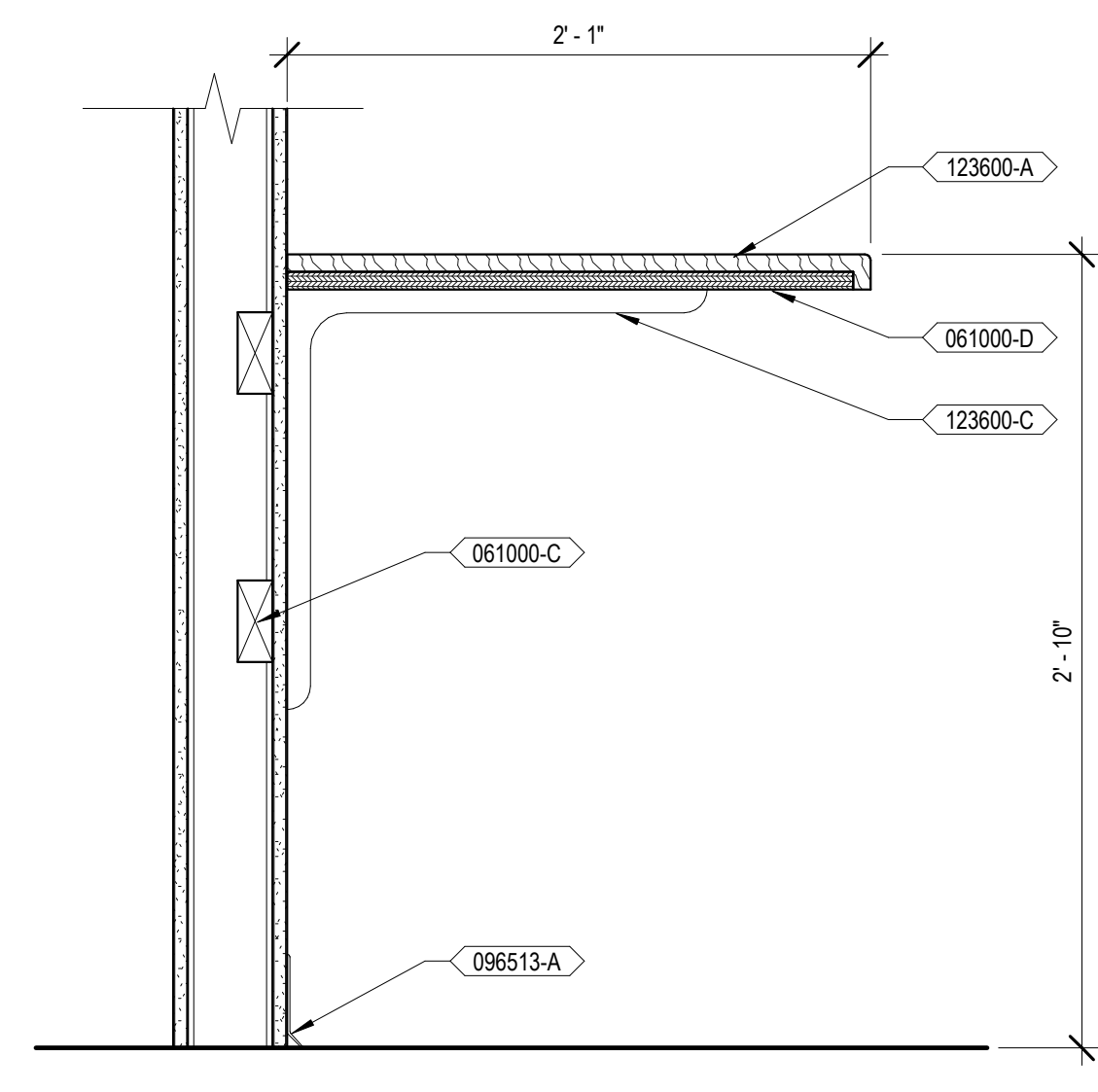
D7 CASEWORK SECTION - CDS 152
1 1/2" = 1'-0"



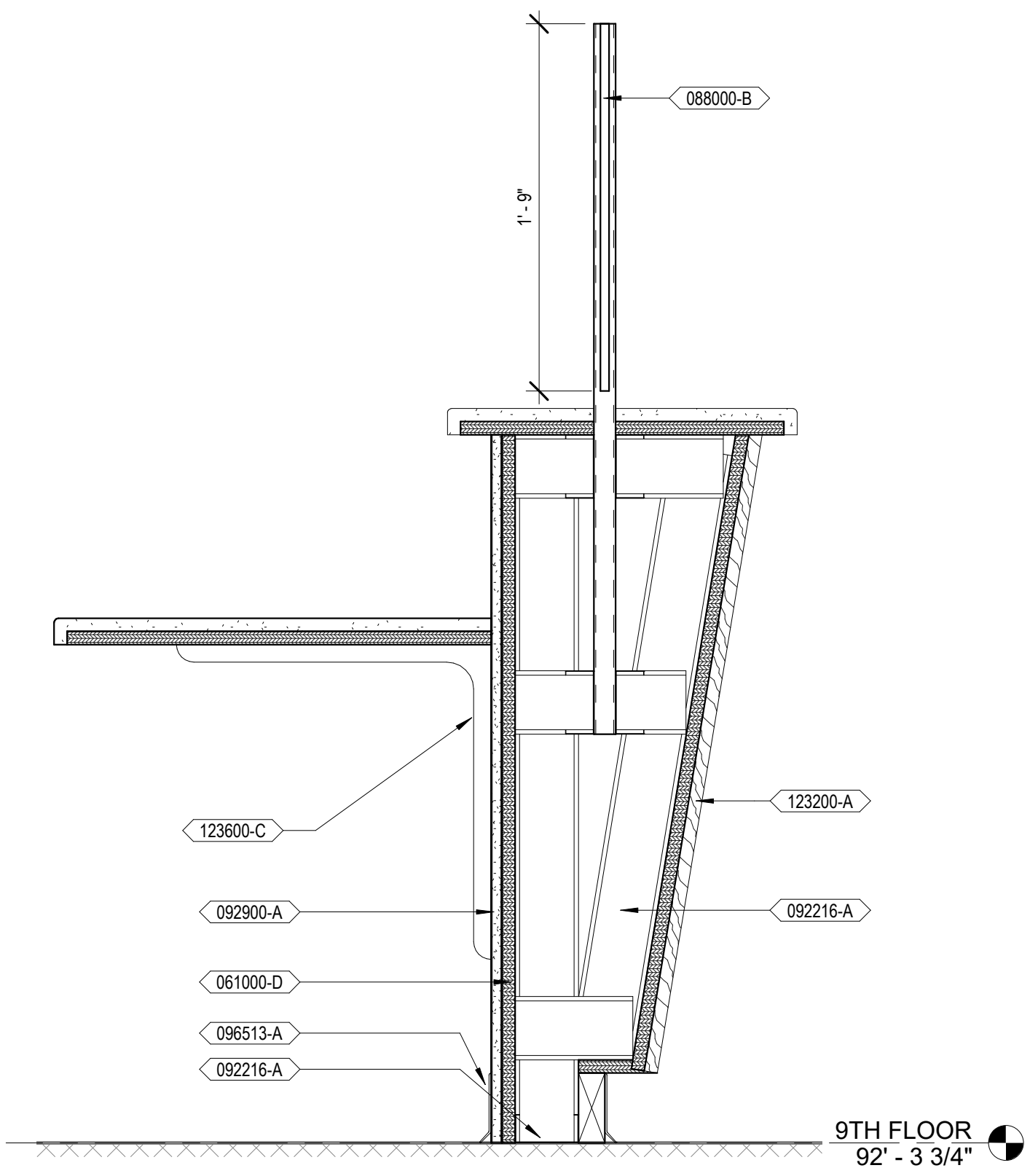
F7 CASEWORK SECTION - CDS 211 & 222
1 1/2" = 1'-0"



F3 CASEWORK SECTION - CDS 301 & 302
1 1/2" = 1'-0"



F5 CASEWORK SECTION - CDS 900
1 1/2" = 1'-0"



F1 CASEWORK SECTION - NURSE STATION
1 1/2" = 1'-0"

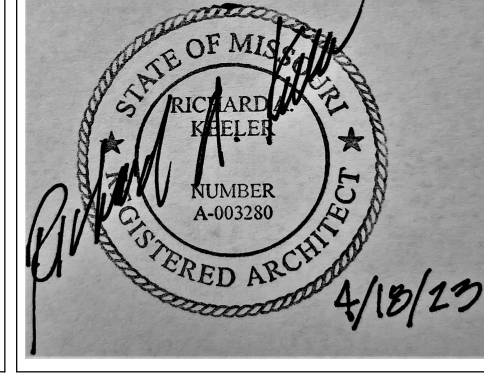
A
B
C
D
E
F
 1
2
3
4
5
6
7
8
9
10
 3/32" = 1'-0"
1/8" = 1'-0"
1/4" = 1'-0"
3/16" = 1'-0"
1/2" = 1'-0"
5/8" = 1'-0"
3/4" = 1'-0"
7/8" = 1'-0"
1" = 1'-0"
1 1/8" = 1'-0"
1 1/4" = 1'-0"
1 1/2" = 1'-0"
1 3/4" = 1'-0"
2" = 1'-0"
2 1/4" = 1'-0"
2 1/2" = 1'-0"
2 3/4" = 1'-0"
3" = 1'-0"
3 1/4" = 1'-0"
3 1/2" = 1'-0"
3 3/4" = 1'-0"
4" = 1'-0"
4 1/4" = 1'-0"
4 1/2" = 1'-0"
4 3/4" = 1'-0"
5" = 1'-0"
5 1/4" = 1'-0"
5 1/2" = 1'-0"
5 3/4" = 1'-0"
6" = 1'-0"
6 1/4" = 1'-0"
6 1/2" = 1'-0"
6 3/4" = 1'-0"
7" = 1'-0"
7 1/4" = 1'-0"
7 1/2" = 1'-0"
7 3/4" = 1'-0"
8" = 1'-0"
8 1/4" = 1'-0"
8 1/2" = 1'-0"
8 3/4" = 1'-0"
9" = 1'-0"
9 1/4" = 1'-0"
9 1/2" = 1'-0"
9 3/4" = 1'-0"
10" = 1'-0"
 4/20/2023 10:51:30 AM
 0
1
2
3
4
5
6
7
8
9
10
 1/8" = 1'-0"
1/4" = 1'-0"
3/8" = 1'-0"
1/2" = 1'-0"
5/8" = 1'-0"
3/4" = 1'-0"
7/8" = 1'-0"
1" = 1'-0"
1 1/8" = 1'-0"
1 1/4" = 1'-0"
1 1/2" = 1'-0"
1 3/4" = 1'-0"
2" = 1'-0"
2 1/4" = 1'-0"
2 1/2" = 1'-0"
2 3/4" = 1'-0"
3" = 1'-0"
3 1/4" = 1'-0"
3 1/2" = 1'-0"
3 3/4" = 1'-0"
4" = 1'-0"
4 1/4" = 1'-0"
4 1/2" = 1'-0"
4 3/4" = 1'-0"
5" = 1'-0"
5 1/4" = 1'-0"
5 1/2" = 1'-0"
5 3/4" = 1'-0"
6" = 1'-0"
6 1/4" = 1'-0"
6 1/2" = 1'-0"
6 3/4" = 1'-0"
7" = 1'-0"
7 1/4" = 1'-0"
7 1/2" = 1'-0"
7 3/4" = 1'-0"
8" = 1'-0"
8 1/4" = 1'-0"
8 1/2" = 1'-0"
8 3/4" = 1'-0"
9" = 1'-0"
9 1/4" = 1'-0"
9 1/2" = 1'-0"
9 3/4" = 1'-0"
10" = 1'-0"
 C:\Rev\2023\125_ARCH\102_millwork\125.dwg
 Number: Revisions: Date:
 VA FORM 88-6221

CONSULTANTS:

ARCHITECT/ENGINEERS:

VALHALLA ENGINEERING GROUP, LLC
 750 W HAMPTON AVE
 SUITE 300
 ENGLEWOOD, CO 80110
 (720) 590-6307
 WWW.VALHALLAENGINEERING.COM

STAMP:



Drawing Title
MILLWORK SECTIONS

Approved: Project Director

Phase
100% CONSTRUCTION DOCUMENTS

Project Title
RENOVATE 9TH FLOOR MENTAL HEALTH

Location
1111 EAST END BLVD, WILKES-BARRE, PA 18711

Issue Date
04/18/2023

Checked
DR

Drawn
ZAM

Project Number
693-19-106

Building Number
01 & 17

Drawing Number
01-A40

DWG 40 of 53

FINAL DRAWINGS SUBMITTAL