

DATE: January 15, 2025

DEPARTMENT OF GENERAL SERVICES  
BUREAU OF CAPITAL PROJECT DESIGN MANAGEMENT  
1800 HERR STREET  
HARRISBURG, PENNSYLVANIA

**ADDENDUM NO. 7**

on

**PROJECT NO. DGS C-0503-0027 PHASE 001**  
**PROJECT TITLE - Danville State Hospital - Replace Steam Generation Equipment**  
**PROFESSIONAL:**

CJL Engineering  
232 Horner St  
Johnstown, Pennsylvania, 15902

**If you submitted a bid prior to this Addendum being issued, your bid has been discarded and you must re-submit your bid(s) prior to the bid opening date and time.**

ADMINISTRATIVE CHANGES – .1 GENERAL CONSTRUCTION AND .4 ELECTRICAL CONSTRUCTION CONTRACTS

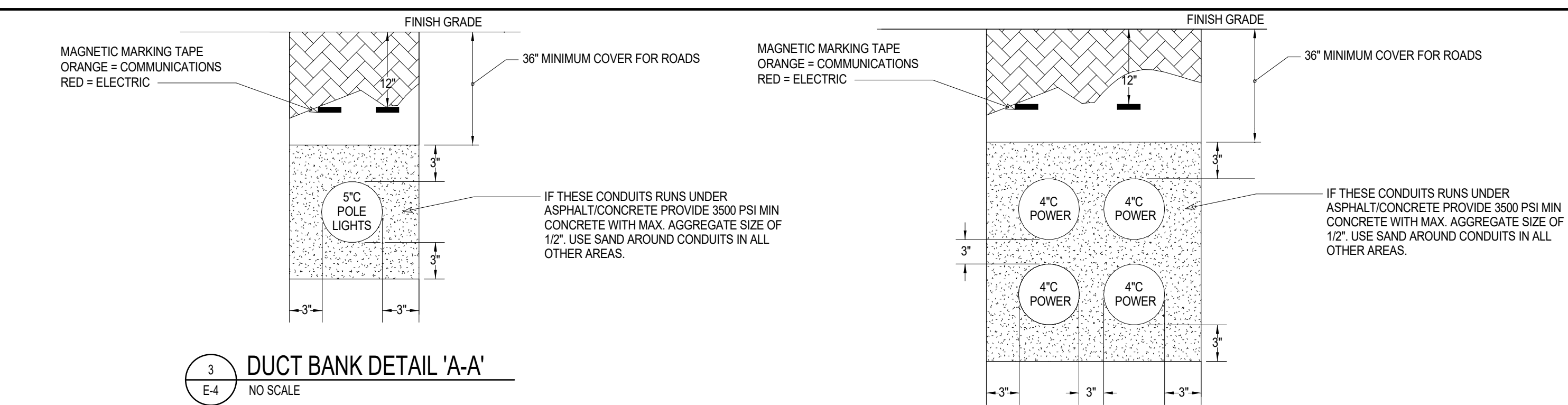
Item 1 - The .1 General Construction Contactor shall provide and install removable protective bollards shown on drawing E-4. Removable Concrete Bollard Detail has been added to drawing S-6. Drawing E-4 number note 4 has been revised to indicate the .1 contractor is to provide and install removable concrete bollards. Detail 5 on drawing E-4 has been removed. Drawing E-4 number note 3 has been revised to include UPS and battery pack for extended runtime specification requirements.

SPECIFICATION CHANGES – ALL CONTRACTS

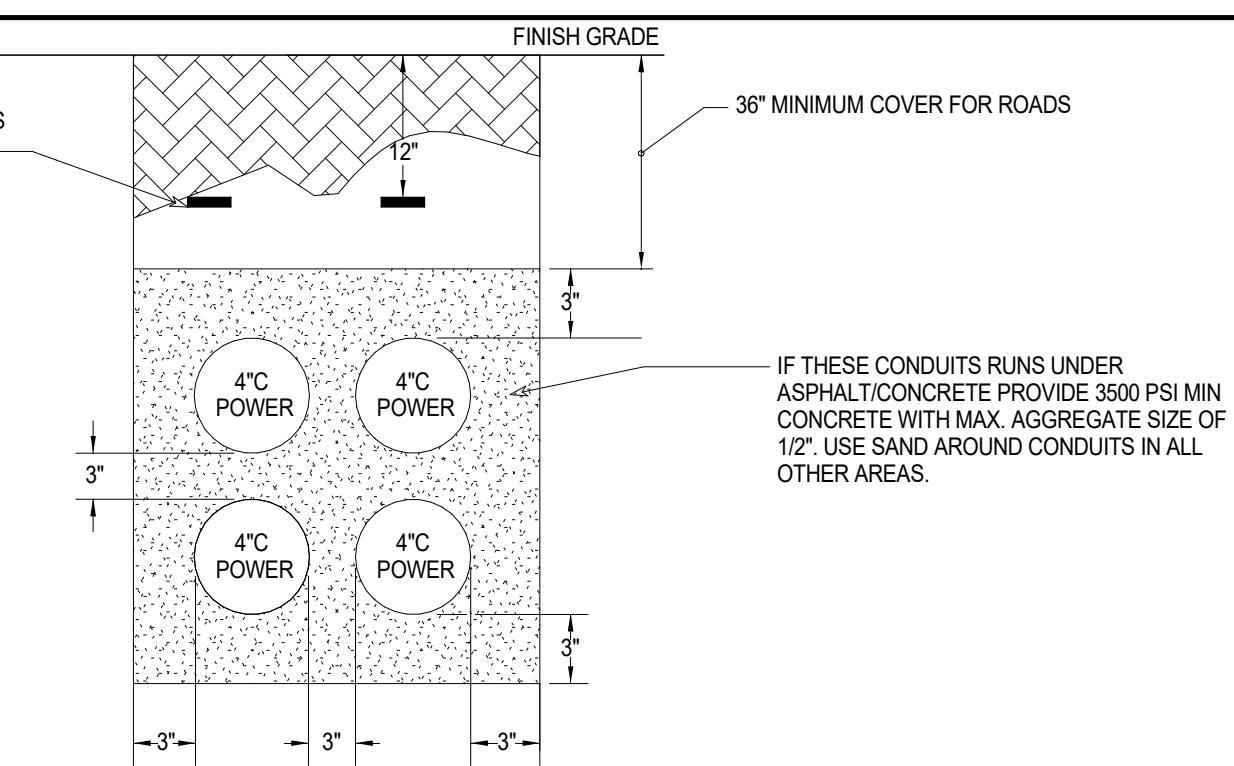
Item 1 - N/A

DRAWING CHANGES – .1 GENERAL CONSTRUCTION AND .4 ELECTRICAL CONSTRUCTION CONTRACTS

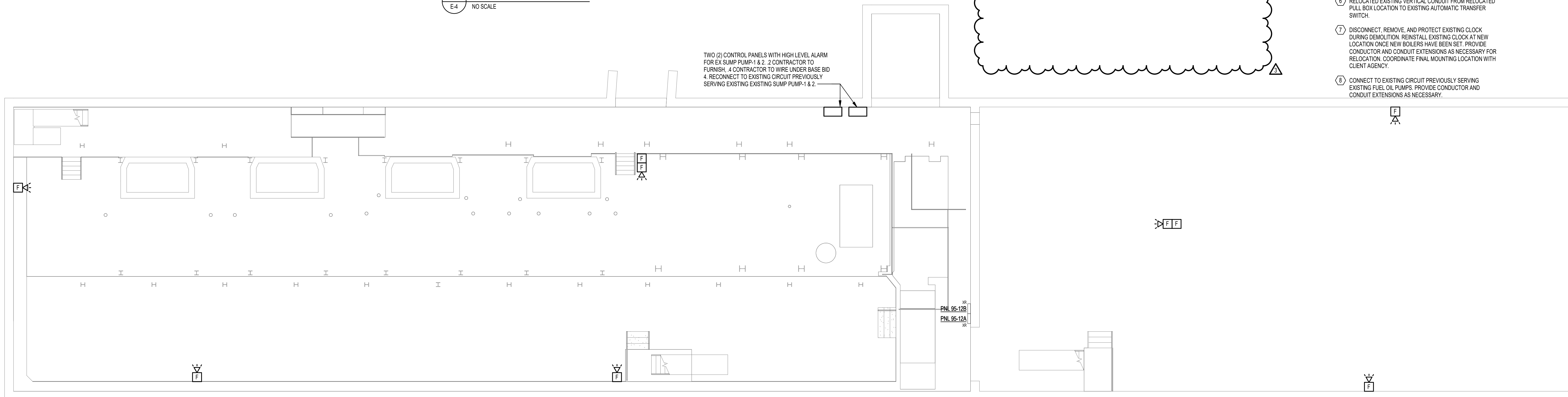
Item 1 - S-6  
Item 2 - E-4



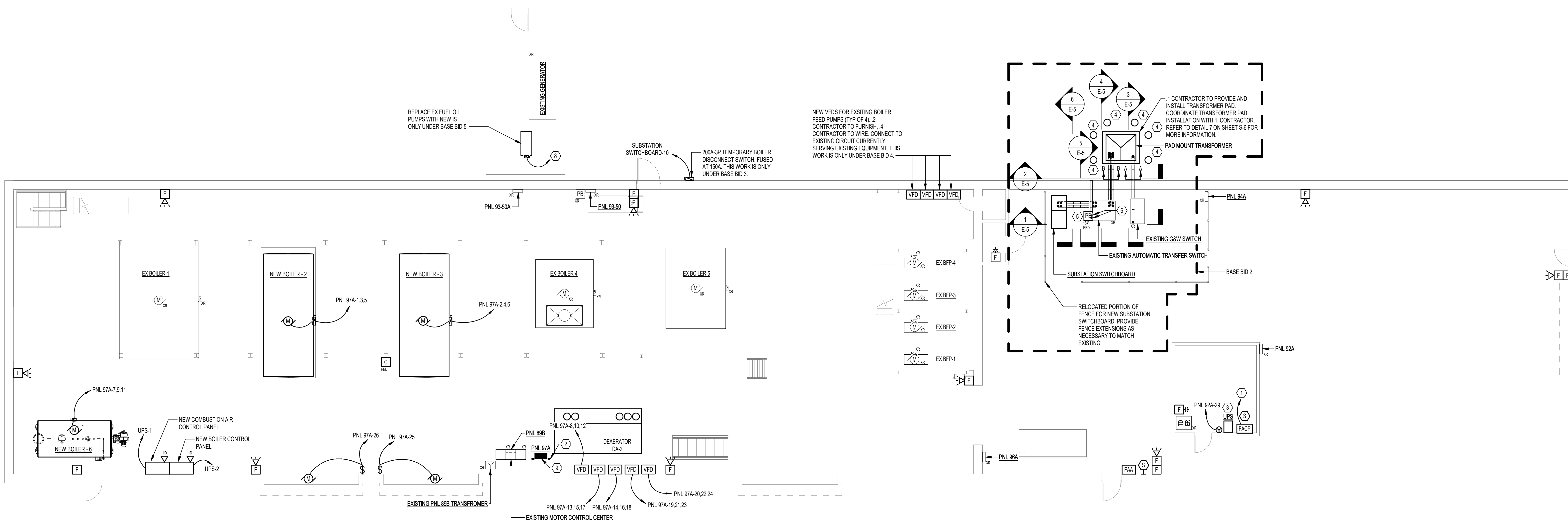
3 DUCT BANK DETAIL 'A-A'  
NO SCALE



4 DUCT BANK DETAIL 'B-B'  
NO SCALE



1 BASEMENT PLAN - POWER & SYSTEMS  
1/8" = 1'-0"



2 LEVEL 1 PLAN - POWER & SYSTEMS  
1/8" = 1'-0"

NUMBERED NOTES

- 1 CONNECT TO EXISTING CIRCUIT PREVIOUSLY SERVING EXISTING FIRE ALARM CONTROL PANEL. PROVIDE CONDUCTOR AND CONDUIT EXTENSIONS AS NECESSARY.
- 2 PROVIDE ALL NECESSARY MOUNTING HARDWARE INCLUDING HOUSE KEEPING PAD, UNISTRUT, ETC FOR MOUNTING OF NEW 1200A DISTRIBUTION PANELBOARD 97A UNDER BASE BID 1. PROVIDE UNISTRUT FOR MOUNTING OF NEW 600A DISTRIBUTION PANELBOARD 97B UNDER BASE BID 1.
- 3 PROVIDE 3000VA UPS. PROVIDE RACK FOR MOUNTING OF UPS. UPS SHALL HAVE A MINIMUM RUN TIME OF 15 MINUTES. PROVIDE LS-8IP RECEPTACLE FOR INPUT CONNECTION TO UPS. PROVIDE (1) BATTERY PACK FOR EXTENDED RUNTIME (APC SRT3000). MANUFACTURER APC MODEL NUMBER: SRT3000XLAUS
- 4 PROTECTIVE BOLLARDS TO BE PROVIDED AND INSTALLED BY THE O.I. CONTRACTOR.
- 5 RELOCATED EXISTING PULL BOX. PROVIDE ALL NECESSARY MOUNTING HARDWARE.
- 6 RELOCATED EXISTING VERTICAL CONDUIT FROM RELOCATED PULL BOX LOCATION TO EXISTING AUTOMATIC TRANSFER SWITCH.
- 7 DISCONNECT, REMOVE, AND PROTECT EXISTING CLOCK DURING DEMOLITION. REINSTALL EXISTING CLOCK AT NEW LOCATION ONCE NEW BOILERS HAVE BEEN SET. PROVIDE CONDUCTOR AND CONDUIT EXTENSIONS AS NECESSARY FOR RELOCATION. COORDINATE FINAL MOUNTING LOCATION WITH CLIENT AGENCY.
- 8 CONNECT TO EXISTING CIRCUIT PREVIOUSLY SERVING EXISTING FUEL OIL PUMPS. PROVIDE CONDUCTOR AND CONDUIT EXTENSIONS AS NECESSARY.

BASE BID 1:

- 1. INSTALLATION OF POWER TO NEW BOILERS B-2, B-3, & B-4 WITH ASSOCIATED WIRING AND CONDUIT.
- 2. INSTALLATION OF POWER TO NEW BOILER FEED PUMPS AND NEW CONDENSATE TRANSFER PUMPS WITH ASSOCIATED WIRING AND CONDUIT.
- 3. DEMOLITION OF EXISTING BOILER CONTROL PANELS AND INSTALLATION OF POWER TO NEW BOILER CONTROL PANELS.
- 4. INSTALLATION OF POWER TO NEW ROLLUP GARAGE DOORS TO SERVE NEW BOILERS B-2&3.
- 5. INSTALLATION OF AN UNINTERRUPTIBLE POWER SUPPLY (UPS) TO BACK UP THE MASTER CONTROL PANEL, BOILER CONTROL PANEL, NETWORK COMPUTER SYSTEM.
- 6. DEMOLITION OF EXISTING MOTOR CONTROL CENTER (MCC) AND EXTENSION OF EXISTING CIRCUITS TO NEW PANELBOARD AND/OR EXISTING MCC THAT IS TO REMAIN.

BASE BID 2:

- 1. ALL WORK DESCRIBED IN BASE BID 1.
- 2. DEMOLITION OF EXISTING SUBSTATION SWITCHBOARD AND INSTALLATION OF NEW SUBSTATION SWITCHBOARD, INCLUDING EXTENSION OF EXISTING CIRCUITS PREVIOUSLY FED FROM EXISTING SUBSTATION SWITCHBOARD.
- 3. DEMOLITION OF EXISTING SUBSTATION TRANSFORMER AND INSTALLATION OF NEW LIQUID FILLED PAD MOUNTED TRANSFORMER.

BASE BID 3:

- 1. ALL WORK DESCRIBED IN BASE BID 2.
- 2. INSTALLATION OF EMERGENCY PORT FUSED DISCONNECT SWITCH FOR TEMPORARY BOILER.

BASE BID 4:

- 1. ALL WORK DESCRIBED IN BASE BID 3.
- 2. WIRING AND CONNECTION OF NEW CONTROL PANELS WITH HIGH LEVEL ALARM FOR SEWER PUMPS IN BASEMENT.
- 3. WIRING AND CONNECTION OF NEW VFDS FOR EXISTING BOILER FEED PUMPS.
- 4. DEMOLITION OF EXISTING FIRE ALARM SYSTEM AND INSTALLATION OF NEW FIRE ALARM SYSTEM.

BASE BID 5:

- 1. ALL WORK DESCRIBED IN BASE BID 4.
- 2. DEMOLITION OF POWER TO EXISTING FUEL PUMP ASSEMBLY AND INSTALLATION OF POWER TO NEW FUEL PUMP ASSEMBLY.

CAMPUS / KEY PLAN

3	ADDENDUM 7 - 1/15/2025		
RECORD REVISIONS			

CONSTRUCTION DOCUMENTS

PROFESSIONAL SEAL  
TIMOTHY C. BERTOLINO  
REGISTERED PROFESSIONAL ENGINEER  
10-14-2024  
DATE

**GJL ENGINEERING**  
2322 Homer Street  
Johnstown, PA 15902  
ph: (814) 536-1653 fax: (814) 536-6732

COMMONWEALTH OF PENNSYLVANIA  
DEPARTMENT OF GENERAL SERVICES  
HARRISBURG, PENNSYLVANIA

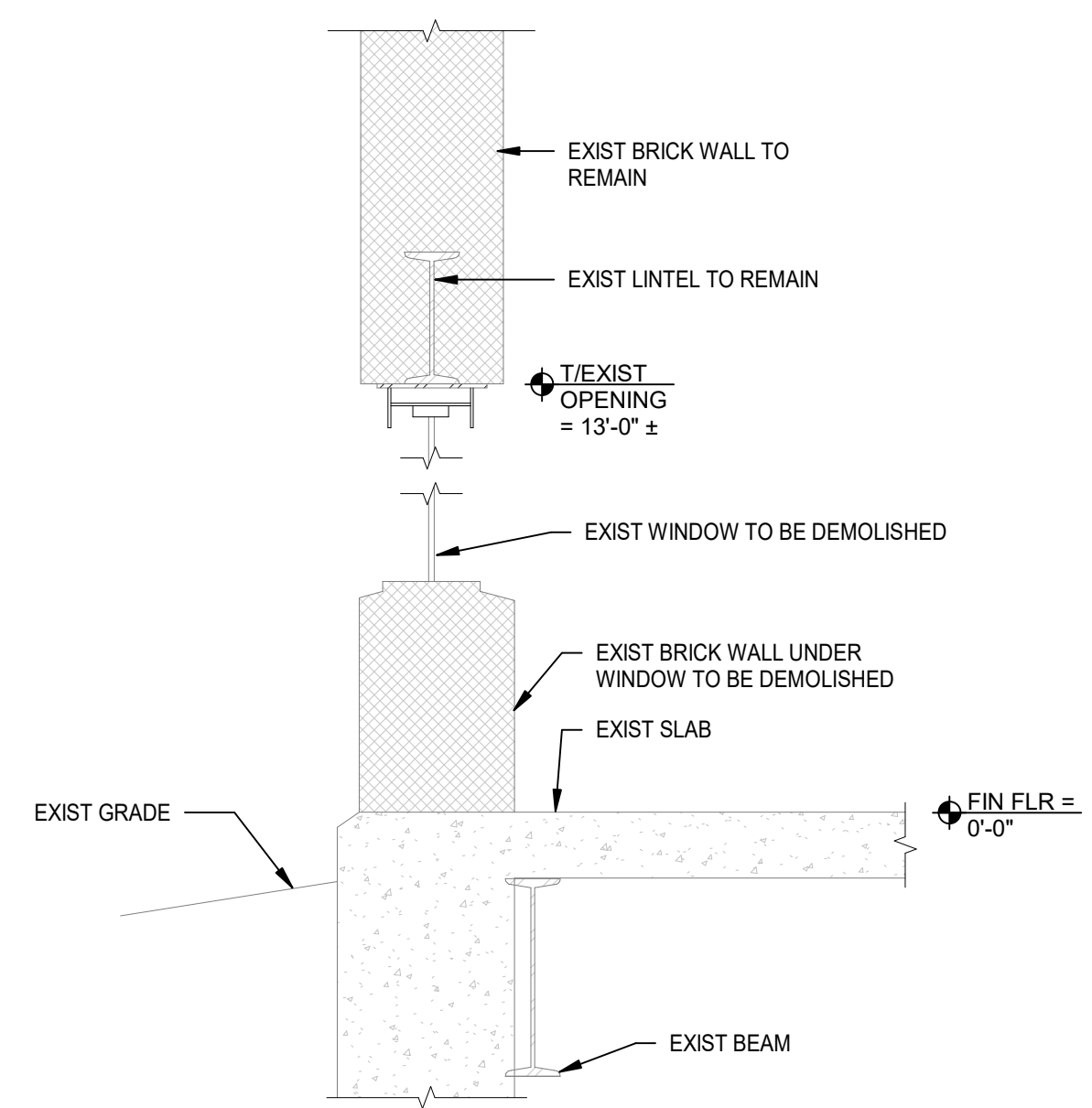
D.G.S. PROJECT No. DGS C-0503-0027 Phase 001

Danville State Hospital  
Replace Steam Generation  
Equipment

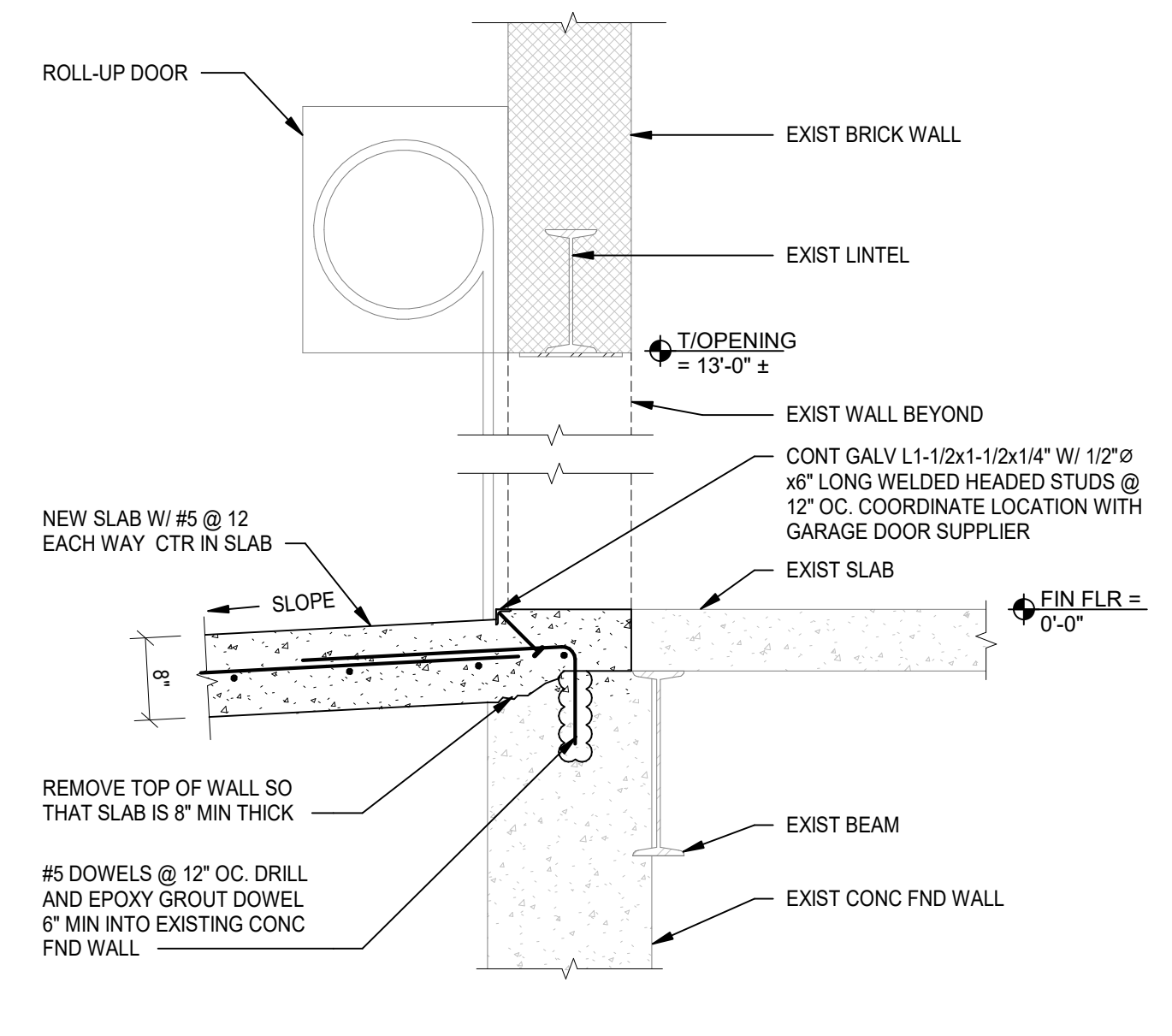
PLANS - POWER & SYSTEMS

DRAWN BY D. BOYER	DATE 10-14-2024	SHEET No. <b>E-4</b>
CHECKED BY T. BERTOLINO	SCALE As indicated	

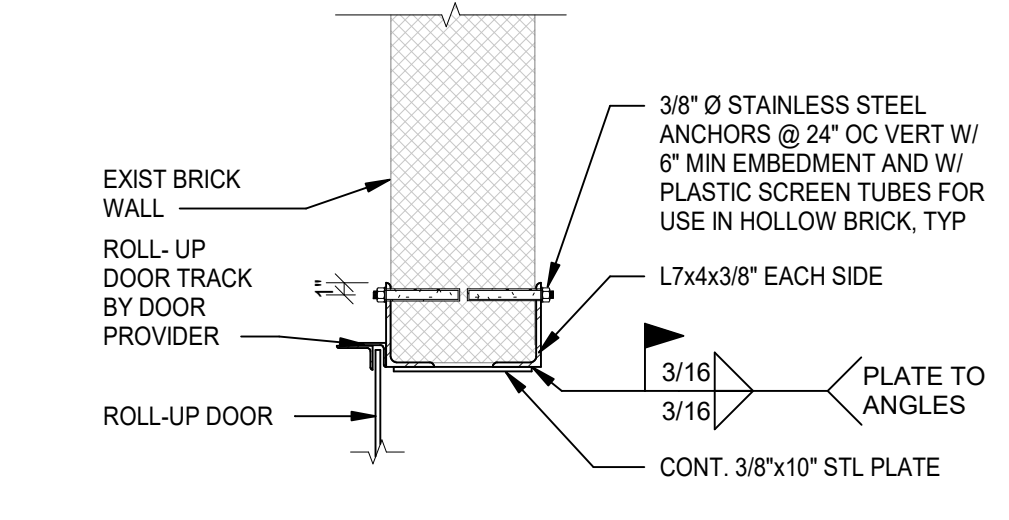
**VERIFY SCALE**  
BAR IS ONE (1) INCH LONG ON ORIGINAL DRAWING.  
IF BAR IS NOT ONE (1) INCH LONG ADJUST SCALE ACCORDINGLY.  
CONTRACTOR SHALL FIELD VERIFY ALL DIMENSIONS. VARIANCE FROM CONTRACT DOCUMENTS NOT PERMITTED WITHOUT PROFESSIONAL & BUREAU OF CONSTRUCTION APPROVAL.



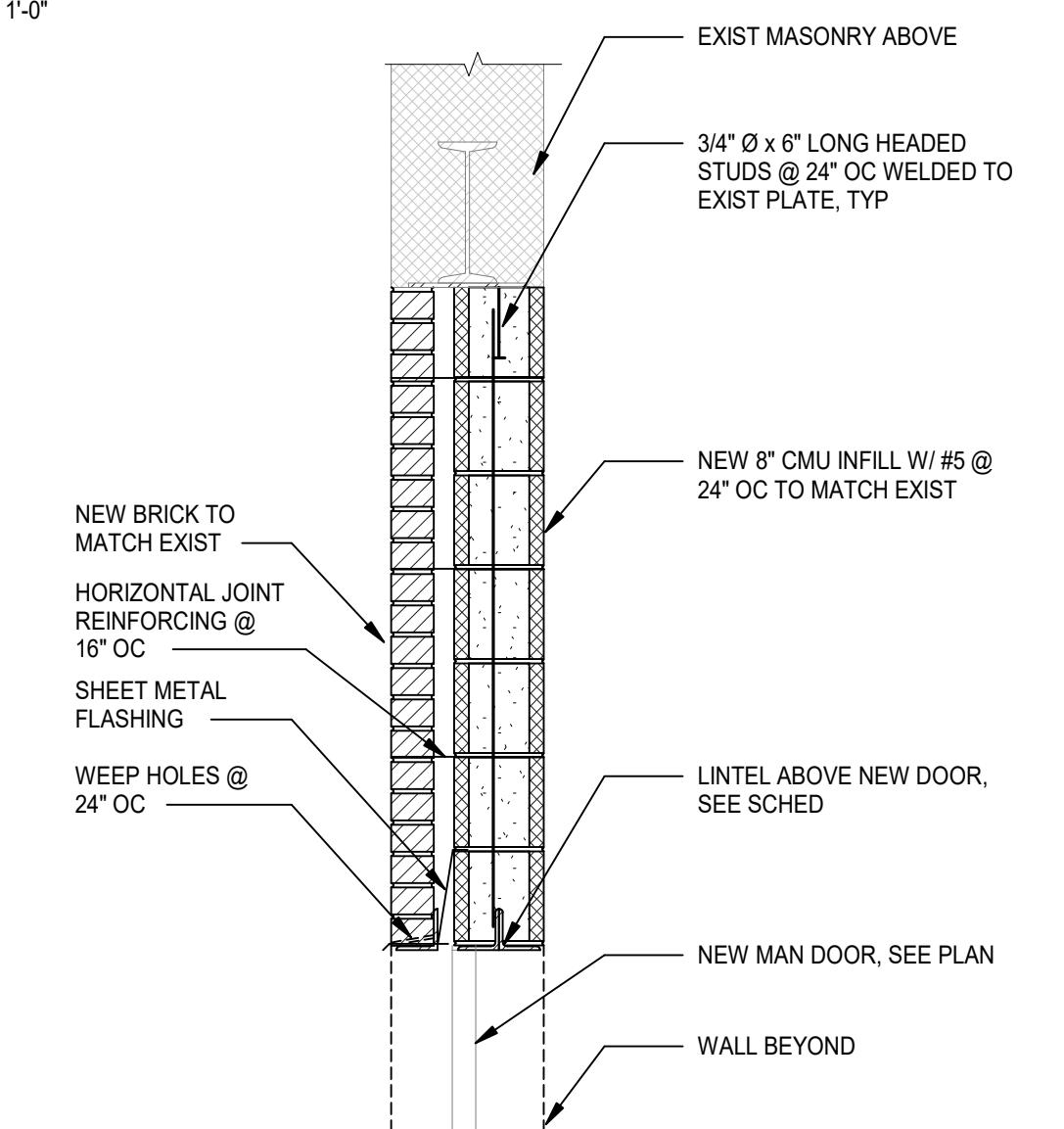
1 SECTION  
S-6 3/4" = 1'-0"



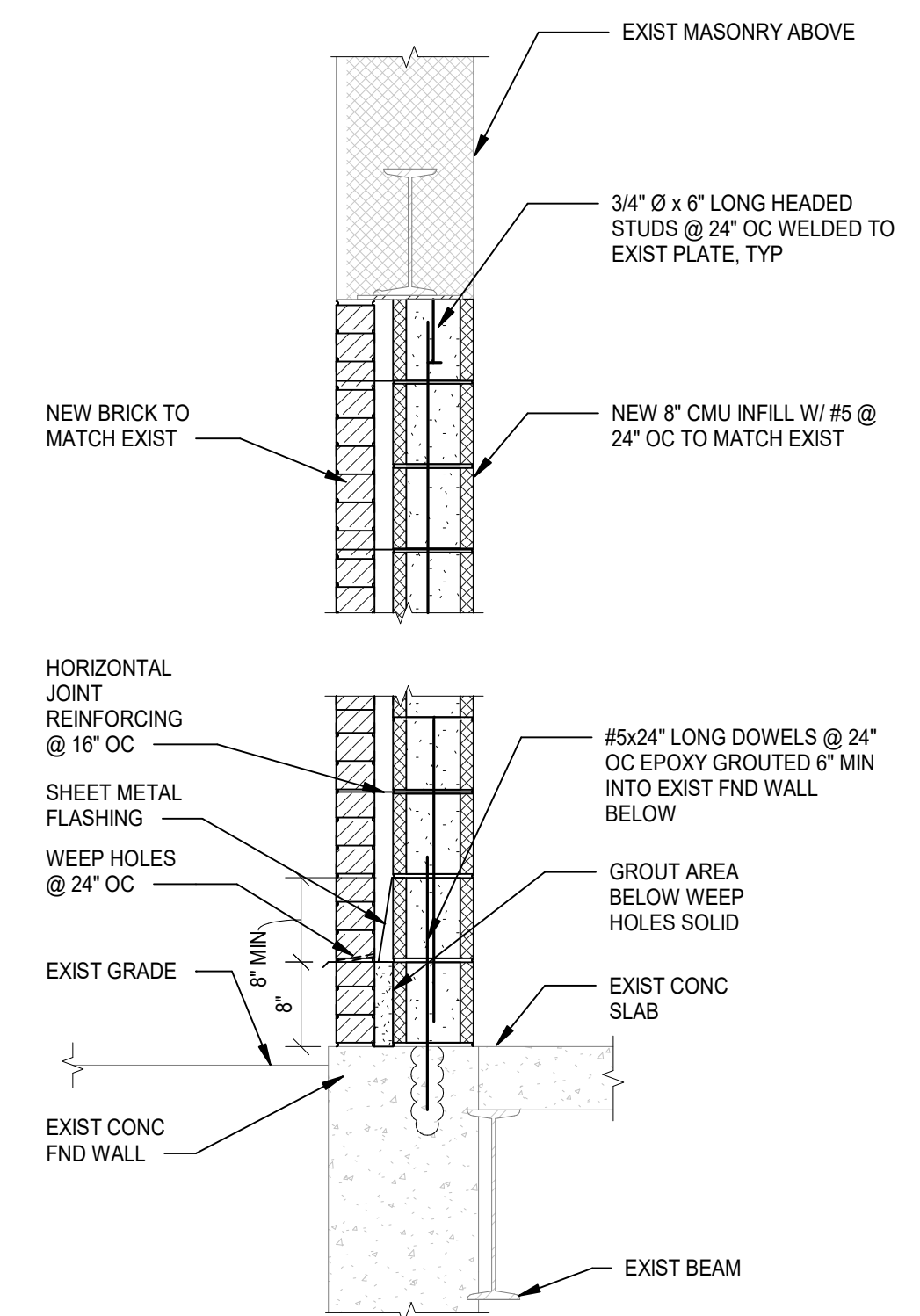
2 SECTION  
S-6 3/4" = 1'-0"



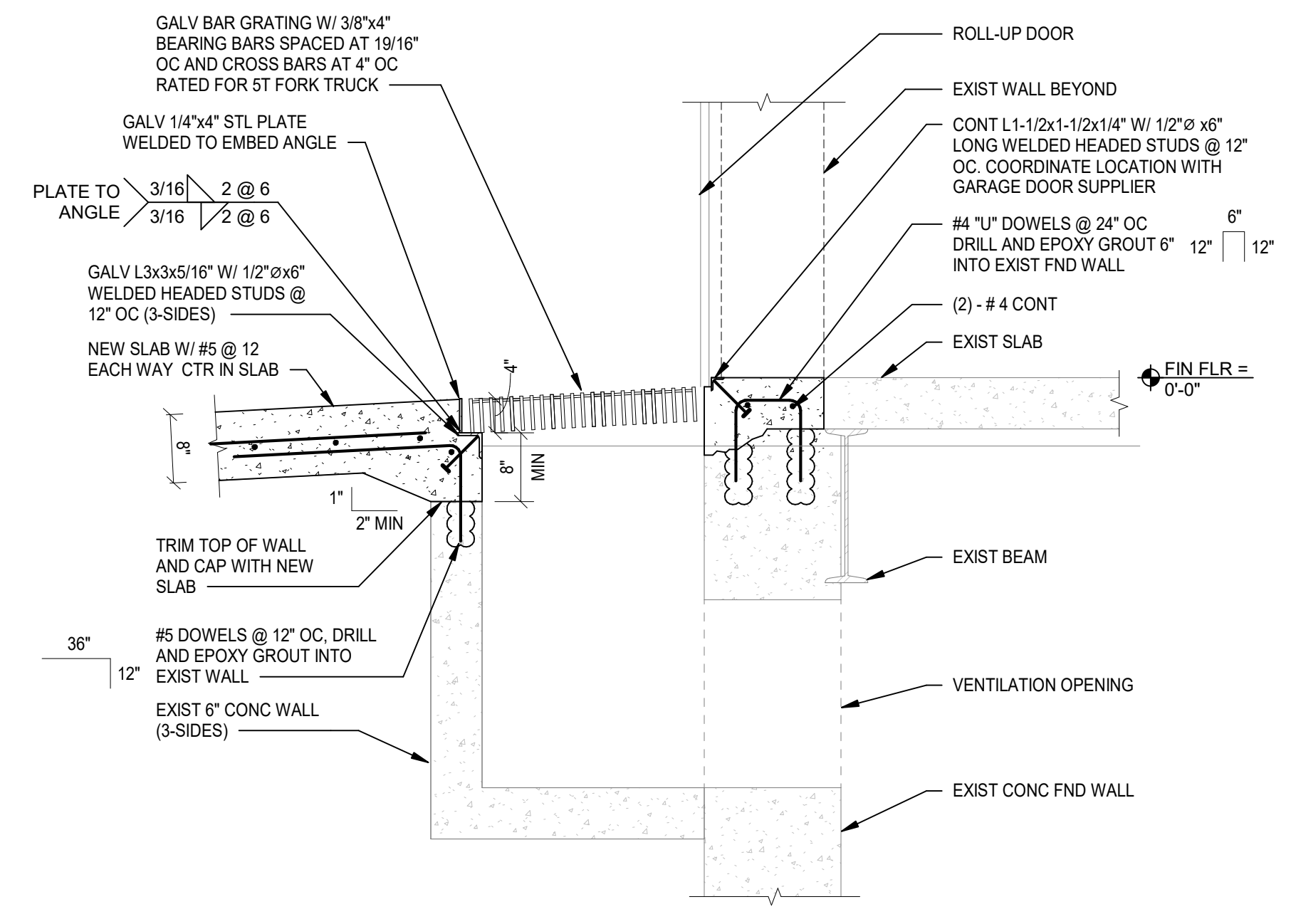
3 DOOR JAMB AT NEW ROLL-UP DOOR DETAIL  
S-6 3/4" = 1'-0"



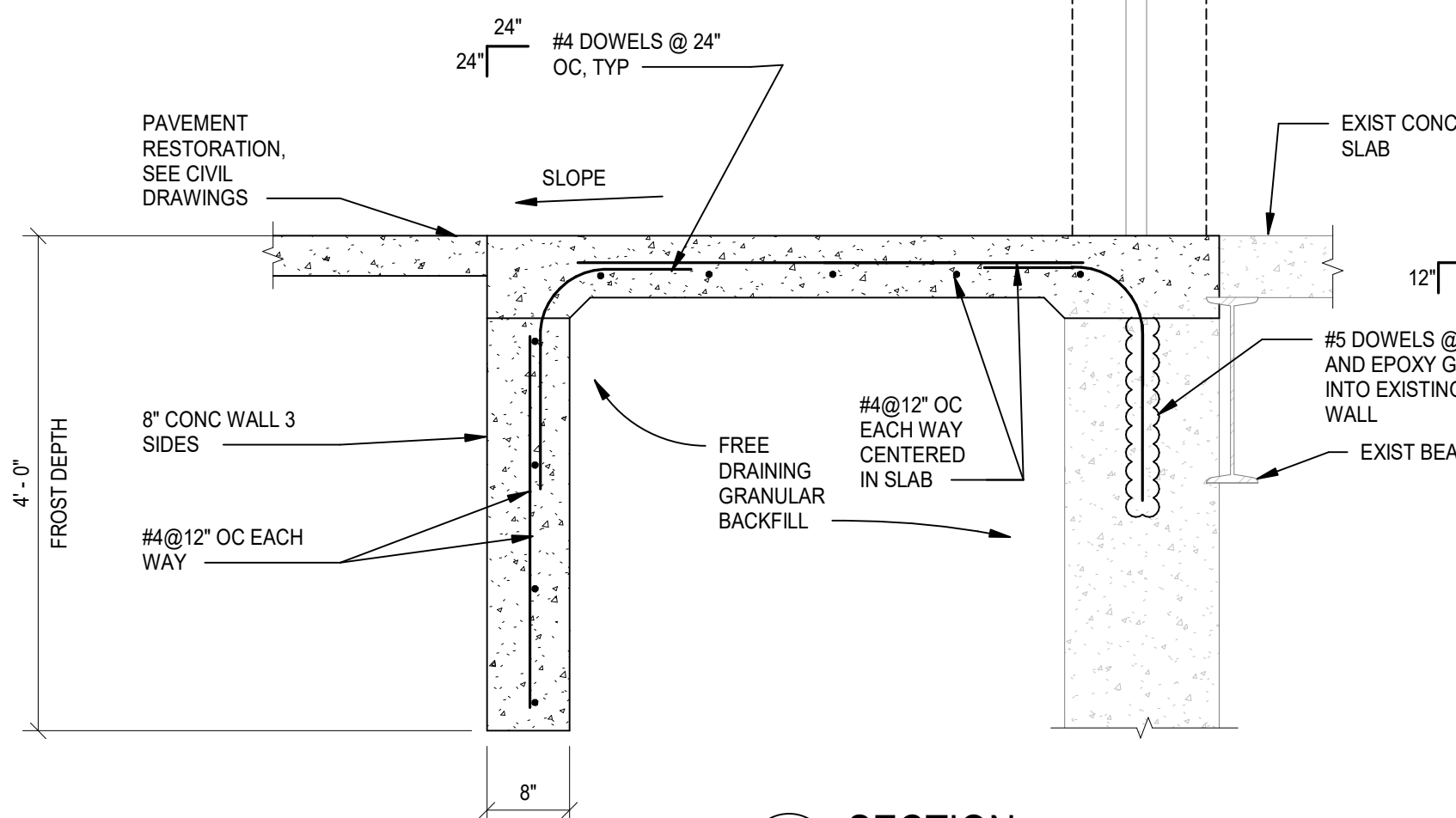
4 SECTION  
S-6 3/4" = 1'-0"



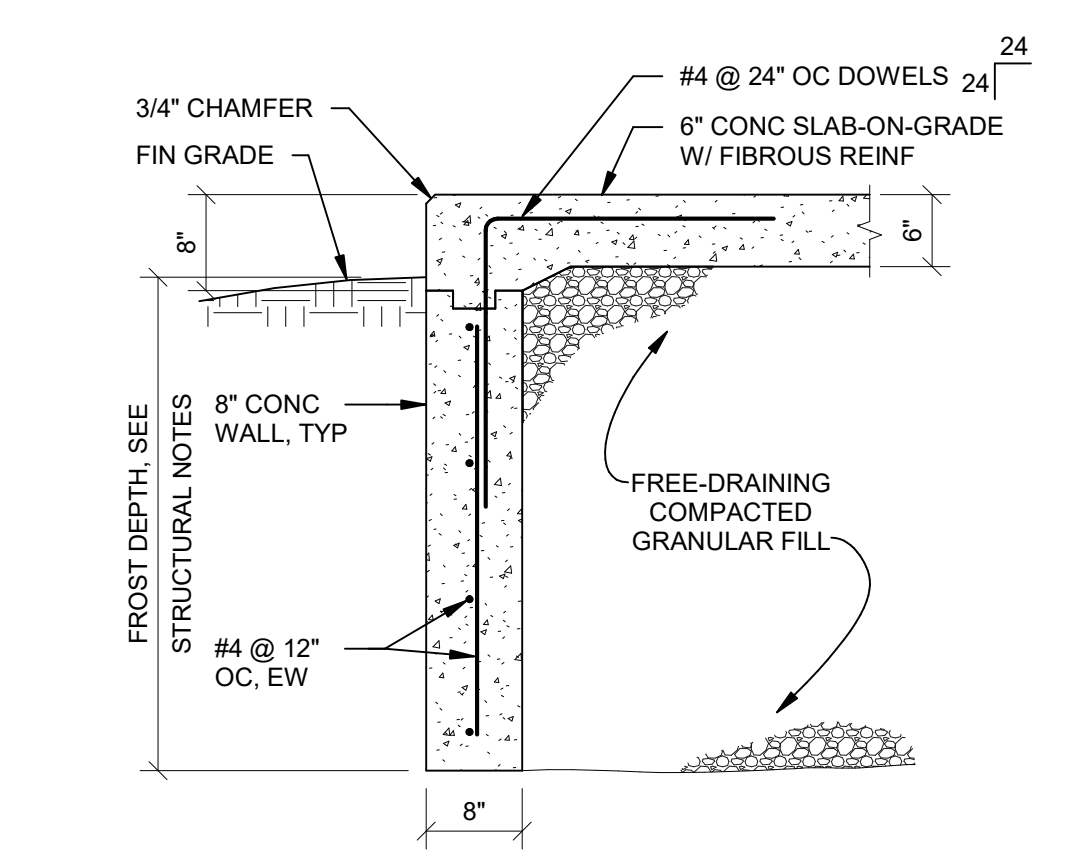
5 SECTION  
S-6 3/4" = 1'-0"



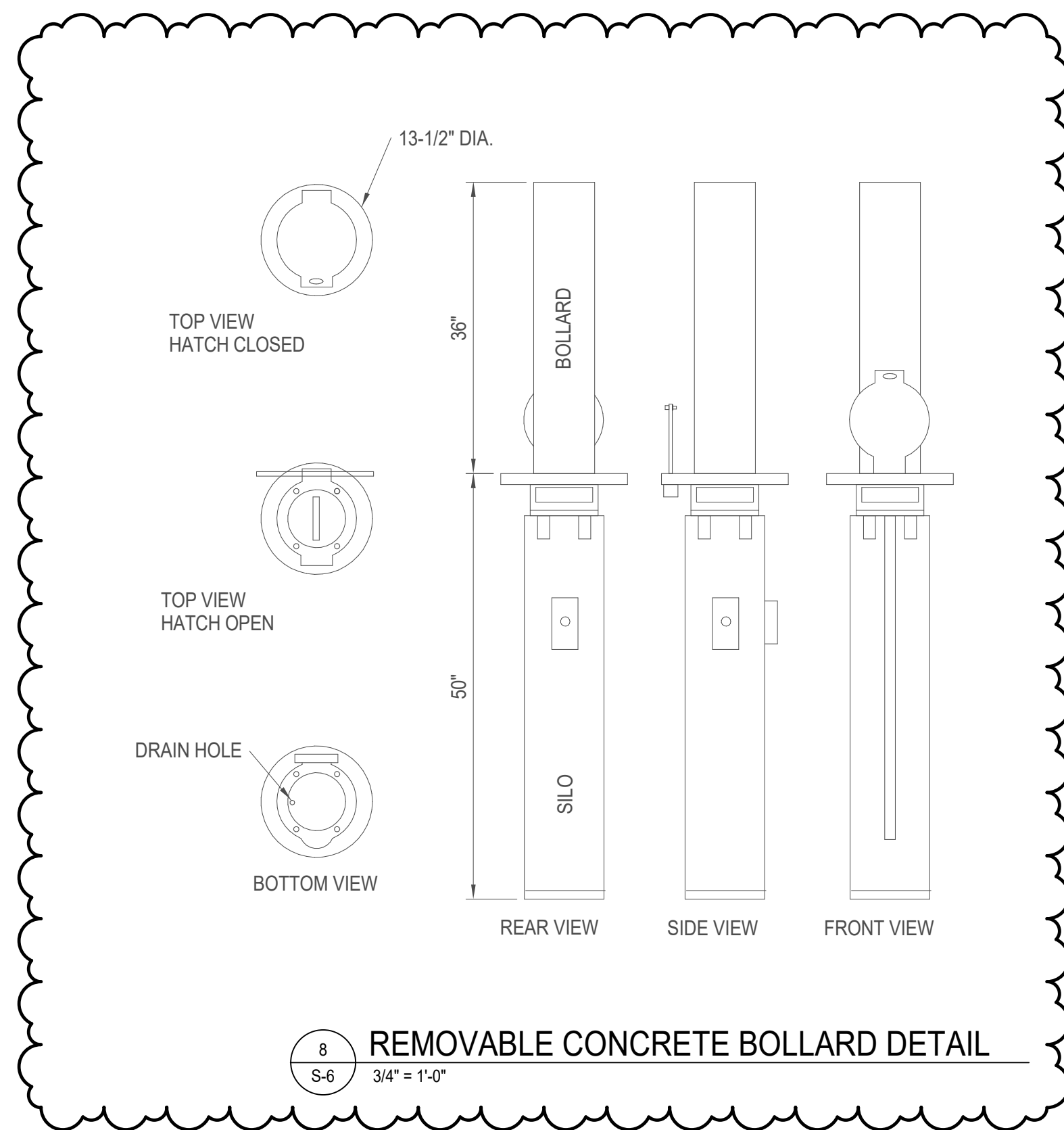
6 SECTION  
S-6 3/4" = 1'-0"



4 SECTION  
S-6 3/4" = 1'-0"



7 TYPICAL EXTERIOR EQUIPMENT SLAB DETAIL  
S-6 3/4" = 1'-0"



8 REMOVABLE CONCRETE BOLLARD DETAIL  
S-6 3/4" = 1'-0"

CAMPUS / KEY PLAN	
3	ADDENDUM 7 - 1/15/2025

CONSTRUCTION DOCUMENTS

10-14-2024  
SIGNATURE DATE

**CJL ENGINEERING**  
232 Homer Street  
Johnstown, PA 15902  
ph: (814) 536-1651 fax: (814) 536-5732

COMMONWEALTH OF PENNSYLVANIA  
DEPARTMENT OF GENERAL SERVICES  
HARRISBURG, PENNSYLVANIA

D.G.S. PROJECT No. DGS C-0503-0027 Phase 001

Danville State Hospital  
Replace Steam Generation  
Equipment  
FRAMING SECTIONS AND  
DETAILS

**VERIFY SCALE**  
BAR IS ONE (1) INCH LONG  
ON ORIGINAL DRAWING.  
0 1  
IF BAR IS NOT ONE (1) INCH LONG  
ADJUST SCALE ACCORDINGLY.  
CONTRACTOR SHALL VERIFY  
ALL DIMENSIONS.  
VARIANCE FROM CONTRACT  
DOCUMENTS NOT PERMITTED  
WITHOUT PROFESSIONAL & BUREAU  
OF CONSTRUCTION APPROVAL.

DRAWN BY Author DATE 10-14-2024 SHEET No. S-6  
CHECKED BY Checker SCALE 3/4" = 1'-0"